

Excellent Integrated System Limited

Stocking Distributor

Click to view price, real time Inventory, Delivery & Lifecycle Information:

[Molex Connector Corporation](#)
[0433352003](#)

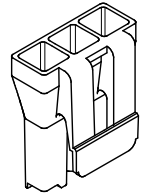
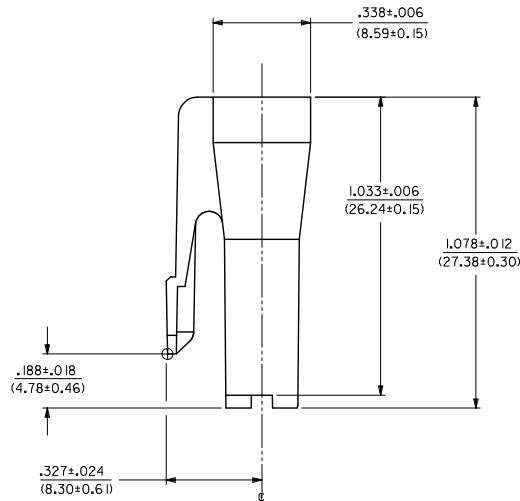
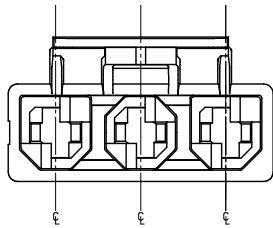
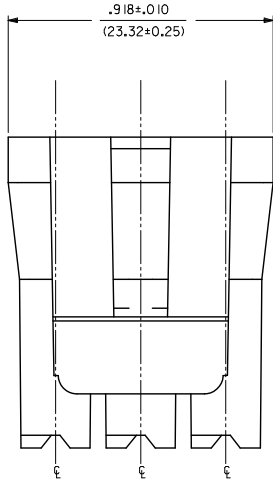
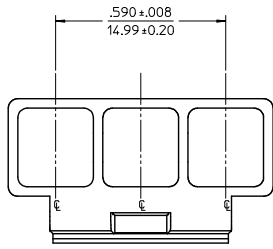
For any questions, you can email us directly:

sales@integrated-circuit.com

	ITEM NUMBER	MATERIAL	COLOR
	43335-1003	A	NATURAL
	43335-2003	B	BLACK
	OBSOLETE 43335-3003	A	RED
	OBSOLETE 43335-4003	A	BLUE
	43335-7003	D	BLACK

NOTES:

- MATERIAL: A: NYLON, PA66, UL94V-2, COLOR: SEE CHART.
B: PA66 NYLON, UL94V-0.
D: NYLON, UL94V-2, COLOR: BLACK, IEC 60335-1 GLOW WIRE CAPABLE.
- FINISH: NONE
- PRODUCT SPECIFICATION: PSX-43335-9999
- PACKAGING SPECIFICATION: PK-43335-001
- THIS CONNECTOR HOUSING FOR USE WITH 43375-**** TERMINALS.
- THIS CONNECTOR HOUSING WILL MATE TO A-43160-***3, 43180-***3, AND 43384-***3 HOUSINGS.
- SEE SDES-43335-9004 FOR REQUIREMENTS FOR THE MATING INTERFACE.
- PARTS CONFORM TO CLASS 'B' REQUIREMENTS OF COSMETIC SPECIFICATION PS-45499-002 EXCEPT MATERIAL OPTION 'B' MEETS CLASS 'C' REQUIREMENTS FOR SINK AND DISCOLORATION.



43335-*003
(SCALE 2:1)

CORRECT TOLERANCE IEC NO: UCP2014-5424 DRAWN BY: JDFX CHKD BY: CHIKO BANERJIN APPROVED BY: JDFX	QUALITY SYMBOLS ▽=0 ▽=0 ▽=0	GENERAL TOLERANCES (UNLESS SPECIFIED)		DIMENSION STYLE		SCALE	DESIGN UNITS	THIRD ANGLE PROJECTION	
		mm	INCH	IN/MM		4:1	INCH		
		4 PLACES ± --- ± ---		DRAWN BY	DATE	TITLE			
		3 PLACES ± --- ± .005		MAB	1995/08/15	3-CKT RECEPTACLE HOUSING .125X.020 FLAT BLADE SYSTEM W/TPA			
		2 PLACES ± 0.13 ± .010		CHECKED BY	DATE	Molex			
		1 PLACE ± 0.25 ± ---		KBP	1995/08/15	SD-43335-*003			
		0 PLACE ± ±		APPROVED BY	DATE	MATERIAL NO.		SHEET NO.	
				RAS	1995/08/15	SEE CHART		1 OF 1	
				ANGULAR ± 1/2°		DOCUMENT NO.			
				DRAFT WHERE APPLICABLE MUST REMAIN WITHIN DIMENSIONS		SIZE			
				THIS DRAWING CONTAINS INFORMATION THAT IS PROPRIETARY TO MOLEX INCORPORATED AND SHOULD NOT BE USED WITHOUT WRITTEN PERMISSION					