

Excellent Integrated System Limited

Stocking Distributor

Click to view price, real time Inventory, Delivery & Lifecycle Information:

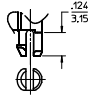
[Molex Connector Corporation](#)
[0442480010](#)

For any questions, you can email us directly:

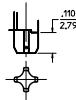
sales@integrated-circuit.com

8 CIRCUIT HOUSING(S)						
ASSEMBLY MATERIAL NUMBER	NUMBER OF CIRCUITS	NUMBER OF PORTS	PEG STYLE	DIM -A-	DIM -B-	DIM -C-
44248-0001	8	2	SNAP-FIT	1,250/31.75	1,120/28.45	.469/11.92
44248-0002	8	4	SNAP-FIT	2,490/63.25	2,360/59.94	.469/11.92
44248-0005	8	2	PRESS-FIT	1,250/31.75	1,120/28.45	.469/11.92
44248-0006	8	4	PRESS-FIT	2,490/63.25	2,360/59.94	.469/11.92

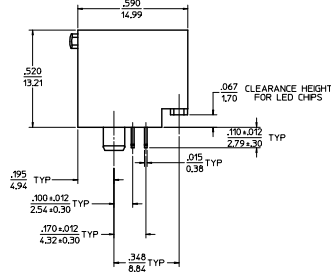
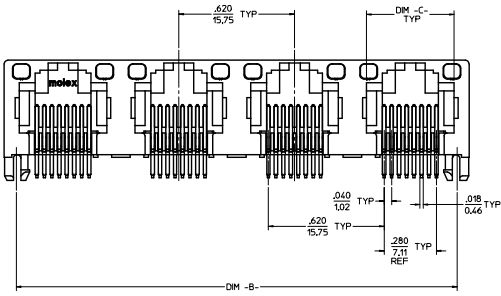
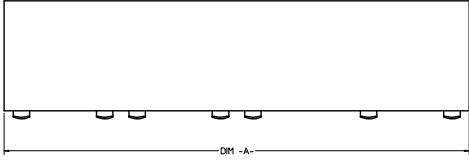
6 CIRCUIT HOUSING(S)						
ASSEMBLY MATERIAL NUMBER	NUMBER OF CIRCUITS	NUMBER OF PORTS	PEG STYLE	DIM -A-	DIM -B-	DIM -C-
44248-0009	6	2	SNAP-FIT	1,250/31.75	1,120/28.45	.389/9.88
44248-0010	4	2	SNAP-FIT	1,250/31.75	1,120/28.45	.389/9.88
44248-0011	6	4	SNAP-FIT	2,490/63.25	2,360/59.94	.389/9.88
44248-0012	4	4	SNAP-FIT	2,490/63.25	2,360/59.94	.389/9.88
44248-0017	6	2	PRESS-FIT	1,250/31.75	1,120/28.45	.389/9.88
44248-0018	4	2	PRESS-FIT	1,250/31.75	1,120/28.45	.389/9.88
44248-0019	6	4	PRESS-FIT	2,490/63.25	2,360/59.94	.389/9.88
44248-0020	4	4	PRESS-FIT	2,490/63.25	2,360/59.94	.389/9.88



SNAP-FIT PEG OPTION
SCALE: NTS
SEE NOTE #8



PRESS-FIT PEG OPTION
SCALE: NTS
SEE NOTE #8



- NOTES:
1) MATERIAL:
HOUSING: POLYESTER(PBT), GLASS FILLED, UL94V-0, COLOR: BLACK
LIGHT PIPES: POLYCARBONATE, UL-94V2, COLOR: CLEAR
TERMINALS: PHOSPHOR BRONZE
2) FINISH:
TERMINALS:
SELECT GOLD IN CONTACT AREA: 50 MICRONS (1.27 MICROMETERS) MIN.
SELECT TRN IN PC TAIL AREA: 100 MICRONS (2.54 MICROMETERS) MIN.
WITH OVERALL NICKEL UNDERLAY: 50 MICRONS (1.27 MICROMETERS) MIN.
3) PRODUCT SPECIFICATION AND PROCESSING PARAMETERS: PS-43860-003.
4) PACKAGING SPECIFICATION:
CONNECTOR ASSEMBLIES IN THERMOFORMED TRAYS PER MOLEX PACKAGING SPECIFICATION PK-44248-004.
5) APPLICATION SPECIFICATION: AS-43860-001
6) ALL UNTOLERANCED DIMENSIONS ARE SHOWN FOR REFERENCE ONLY.
7) CONFORMS TO FCC REGULATION PART 68.5 FOR MODULAR JACKS.
8) MODJACKS AVAILABLE WITH EITHER SNAP-FIT OR PRESS-FIT PEGS.
THIS DRAWING SHOWS SNAP-FIT PEGS.
9) PCB LAYOUT AND PANEL CUT-OUT SHOWN ON SHEETS (5) AND (6).
10) THIS PART CONFORMS TO CLASS B REQUIREMENTS OF COSMETIC SPECIFICATION PS-45499-002.

UNSHIELDED
WITH LIGHT PIPES

ADD TAIL TOI EC NO. UEP7003-4879 DRAWN/REVISED CHKD/BELL APPROVED/MS DATE 2010/05/09 2010/05/09 2010/06/02	QUALITY SYMBOLS	GENERAL TOLERANCES (UNLESS SPECIFIED)	DIMENSION STYLE	SCALE	DESIGN UNITS	THIRD ANGLE PROJECTION
	$\nabla=0$ $\nabla=0$ $\nabla=0$	mm INCH 4 PLACES ± --- ± --- 3 PLACES ± --- ± .010 2 PLACES ± 0.25 ± --- 1 PLACE ± --- ± --- 0 PLACE ± ±	IN/MM DRAWN BY DATE M MAYO 98/10/06 CHECKED BY DATE J ROBERTS 98/10/06 APPROVED BY DATE J ROBERTS 98/10/06	4:1	INCH	
		ANGULAR ±1/2° DRAFT WHERE APPLICABLE MUST REMAIN WITHIN DIMENSIONS	MATERIAL NO. SEE CHART SIZE D THIS DRAWING CONTAINS INFORMATION THAT IS PROPRIETARY TO MOLEX INCORPORATED AND SHOULD NOT BE USED WITHOUT WRITTEN PERMISSION			
						molex DOCUMENT NO. SD-44248-001 SHEET NO. 1 OF 6

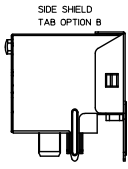
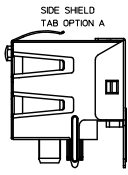
20 19 18 17 16 15 14 13 12 11 10 9 8 7 6 5 4 3 2 1



SNAP-FIT PEG OPTION
SCALE: NTS
SEE NOTE #8



PRESS-FIT PEG OPTION
SCALE: NTS
SEE NOTE #8

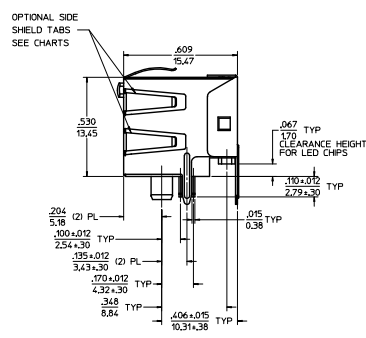
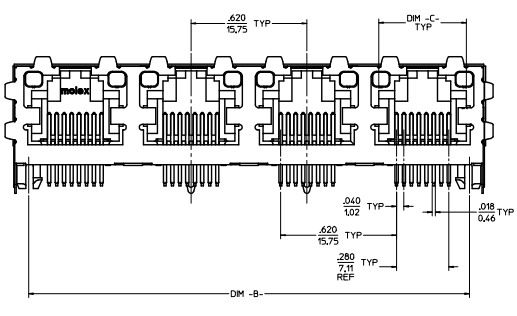
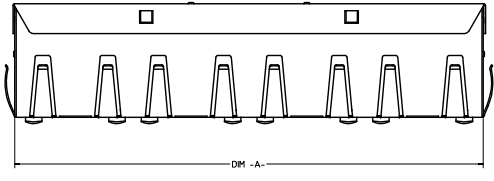


(8) CIRCUIT HOUSING(S)

ASSEMBLY MATERIAL NUMBER	NUMBER OF CIRCUITS	NUMBER OF PORTS	PEG STYLE	SIDE SHIELD TAB OPTION	DIM -A-	DIM -B-	DIM -C-
44248-0029	8	2	SNAP-FIT	A	1,274/32.36	1,120/28.45	.469/11.92
44248-0030	8	4	SNAP-FIT	A	2,514/63.86	2,360/59.94	.469/11.92
44248-0033	8	2	PRESS-FIT	A	1,274/32.36	1,120/28.45	.469/11.92
44248-0034	8	4	PRESS-FIT	A	2,514/63.86	2,360/59.94	.469/11.92

(6) CIRCUIT HOUSING(S)

ASSEMBLY MATERIAL NUMBER	NUMBER OF CIRCUITS	NUMBER OF PORTS	PEG STYLE	SIDE SHIELD TAB OPTION	DIM -A-	DIM -B-	DIM -C-
44248-0037	6	2	SNAP-FIT	A	1,274/32.36	1,120/28.45	.389/9.88
44248-0038	4	2	SNAP-FIT	A	1,274/32.36	1,120/28.45	.389/9.88
44248-0039	6	4	SNAP-FIT	A	2,514/63.86	2,360/59.94	.389/9.88
44248-0040	4	4	SNAP-FIT	A	2,514/63.86	2,360/59.94	.389/9.88
44248-0045	6	2	PRESS-FIT	A	1,274/32.36	1,120/28.45	.389/9.88
44248-0046	4	2	PRESS-FIT	A	1,274/32.36	1,120/28.45	.389/9.88
44248-0047	6	4	PRESS-FIT	A	2,514/63.86	2,360/59.94	.389/9.88
44248-0048	4	4	PRESS-FIT	A	2,514/63.86	2,360/59.94	.389/9.88

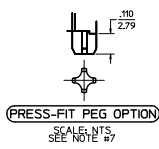
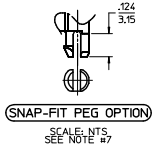


- NOTES:**
- MATERIAL:**
HOUSING: POLYESTER(PBT), GLASS FILLED, UL94V-0, COLOR: BLACK
LIGHT PIPES: POLYCARBONATE, UL-94V2, COLOR: CLEAR
TERMINALS: PHOSPHOR BRONZE
SHIELD: BRASS
 - FINISH:**
TERMINALS:
SELECT GOLD IN CONTACT AREA: 50 MICRONS (1.27 MICROMETERS) MIN.
SELECT TIN IN PC TAIL AREA: 100 MICRONS (2.54 MICROMETERS) MIN.
WITH OVERALL NICKEL UNDERPLATE: 50 MICRONS (1.27 MICROMETERS) MIN.
SHIELD:
100 MICRONS (2.54 MICROMETERS) NICKEL OVER 50 MICRONS (1.27 MICROMETERS) COPPER UNDERPLATE PCB GROUND TABS DIPPED IN TIN
 - PRODUCT SPECIFICATION AND PROCESSING PARAMETERS:** PS-4360-003.
 - PACKAGING SPECIFICATION:**
CONNECTOR ASSEMBLIES IN THERMOFORMED TRAYS PER MOLEX PACKAGING SPECIFICATION PK-44248-004.
 - APPLICATION SPECIFICATION:** AS-4860-001
 - ALL UNTOLERANCED DIMENSIONS ARE SHOWN FOR REFERENCE ONLY.**
 - CONFORMS TO FCC REGULATION PART 68.5 FOR MODULAR JACKS.**
 - MODULAR JACKS AVAILABLE WITH EITHER SNAP-FIT OR PRESS-FIT PEGS.**
THIS DRAWING SHOWS SNAP-FIT PEGS.
 - PCB LAYOUT AND PANEL CUT-OUT SHOWN ON SHEETS (5) AND (6).**
 - THIS PART CONFORMS TO CLASS B REQUIREMENTS OF COSMETIC SPECIFICATION PS-45499-002.**

SHIELDED WITH LIGHT PIPES

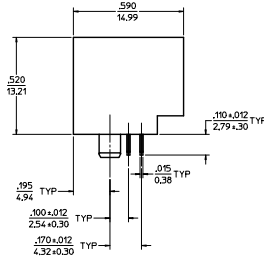
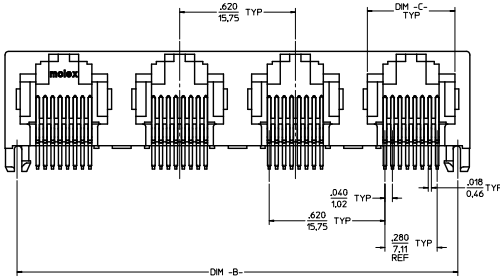
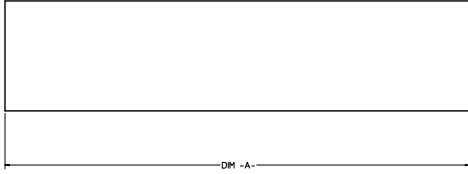
QUALITY SYMBOLS	GENERAL TOLERANCES (UNLESS SPECIFIED)		DIMENSION STYLE		SCALE	DESIGN UNITS	THIRD ANGLE PROJECTION
	mm	INCH	IN/MM	IN/MM			
∇=0	4 PLACES	± .010	MAYO	98/10/06	4:1	INCH	GANGED INVERTED MODJACK ASSEMBLY
∇=0	2 PLACES	± .025	JROBERTS	98/10/06			
∇=0	1 PLACE	± .010	JROBERTS	98/10/06			
			MATERIAL NO. SEE CHART				
			DRAWING NO. SD-44248-001				
			DRAFT WHERE APPLICABLE MUST REMAIN WITHIN DIMENSIONS				SHEET NO. 2 OF 6
			SIZE D THIS DRAWING CONTAINS INFORMATION THAT IS PROPRIETARY TO MOLEX INCORPORATED AND SHOULD NOT BE USED WITHOUT WRITTEN PERMISSION				

Rev. 0, 04/11/11 19 18 17 16 15 14 13 12 11 10 9 8 7 6 5 4 3 2 1



8 CIRCUIT HOUSING(S)						
ASSEMBLY MATERIAL NUMBER	NUMBER OF CIRCUITS	NUMBER OF PORTS	PEG STYLE	DIM -A-	DIM -B-	DIM -C-
44248-0057	8	2	SNAP-FIT	1,250/31.75	1,120/28.45	.469/11.92
44248-0058	8	4	SNAP-FIT	2,490/63.25	2,360/59.94	.469/11.92
44248-0061	8	2	PRESS-FIT	1,250/31.75	1,120/28.45	.469/11.92
44248-0062	8	4	PRESS-FIT	2,490/63.25	2,360/59.94	.469/11.92

6 CIRCUIT HOUSING(S)						
ASSEMBLY MATERIAL NUMBER	NUMBER OF CIRCUITS	NUMBER OF PORTS	PEG STYLE	DIM -A-	DIM -B-	DIM -C-
44248-0065	6	2	SNAP-FIT	1,250/31.75	1,120/28.45	.389/9.88
44248-0066	4	2	SNAP-FIT	1,250/31.75	1,120/28.45	.389/9.88
44248-0067	6	4	SNAP-FIT	2,490/63.25	2,360/59.94	.389/9.88
44248-0068	4	4	SNAP-FIT	2,490/63.25	2,360/59.94	.389/9.88
44248-0073	6	2	PRESS-FIT	1,250/31.75	1,120/28.45	.389/9.88
44248-0074	4	2	PRESS-FIT	1,250/31.75	1,120/28.45	.389/9.88
44248-0075	6	4	PRESS-FIT	2,490/63.25	2,360/59.94	.389/9.88
44248-0076	4	4	PRESS-FIT	2,490/63.25	2,360/59.94	.389/9.88



- NOTES:
- MATERIAL: HOUSING: POLYESTER(PBT), GLASS FILLED, UL94V-0, COLOR: BLACK
TERMINALS: PHOSPHOR BRONZE
 - FINISH: TERMINALS: SELECT GOLD IN CONTACT AREA; 50 MICRONS (1.27 MICROMETERS) MIN. WITH OVERALL NICKEL UNDERPLATE; 50 MICRONS (1.27 MICROMETERS) MIN.
 - PRODUCT SPECIFICATION AND PROCESSING PARAMETERS: PS-4260-003
 - PACKAGING SPECIFICATIONS: CONNECTOR ASSEMBLIES IN THERMOFORMED TRAYS PER MOLEX PACKAGING SPECIFICATION PK-42248-004.
 - ALL UNTOLERANCED DIMENSIONS ARE SHOWN FOR REFERENCE ONLY.
 - CONFORMS TO FCC REGULATION PART 68.5 FOR MODULAR JACKS.
 - MODJACKS AVAILABLE WITH EITHER SNAP-FIT OR PRESS-FIT PEGS. THIS DRAWING SHOWS SNAP-FIT PEGS.
 - PCB LAYOUT AND PANEL CUT-OUT SHOWN ON SHEETS (5) AND (6).
 - THIS PART CONFORMS TO CLASS B REQUIREMENTS OF COSMETIC SPECIFICATION PS-45499-002.

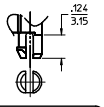
UNSHIELDED

SEE SHEET 1 REC. NO. 1027013-4879 DRAWING/REV. 2010/05/09 CHK'D/BELL 2010/05/09 APPR'D/SMT 2010/06/02 (DATE)	QUALITY SYMBOLS	GENERAL TOLERANCES (UNLESS SPECIFIED)	DIMENSION STYLE IN/MM	SCALE 4:1	DESIGN UNITS INCH	THIRD ANGLE PROJECTION	
	∇=0 ∇=0 ∇=0	4 PLACES ±.005 3 PLACES ±.010 2 PLACES ±.025 1 PLACE ±.050 0 PLACE ±.100	mm INCH ±.005 ±.005 ±.010 ±.010 ±.025 ±.025 ±.050 ±.050	DRAWN BY MMAYO CHECKED BY JROBERTS APPROVED BY JROBERTS DATE 98/10/06 DATE 98/10/06 DATE 98/10/06			
		DRAFT WHERE APPLICABLE MUST REMAIN WITHIN DIMENSIONS	ANGULAR ±1/2°	SEE CHART	DOCUMENT NO. SD-44248-001	SHEET NO. 3 OF 6	

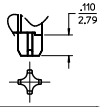
molex

GANGED INVERTED MODJACK ASSEMBLY

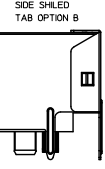
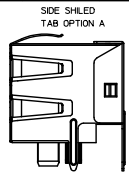
20 19 18 17 16 15 14 13 12 11 10 9 8 7 6 5 4 3 2 1



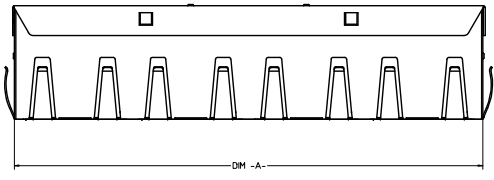
SNAP-FIT PEG OPTION
SCALE: NTS.
SEE NOTE #7



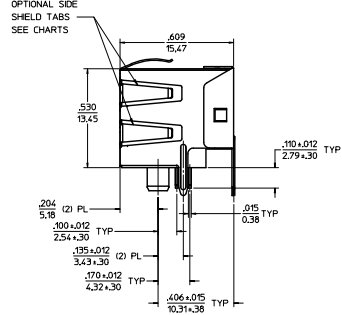
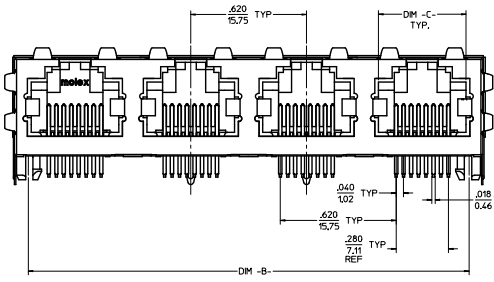
PRESS-FIT PEG OPTION
SCALE: NTS.
SEE NOTE #7



(8) CIRCUIT HOUSING(S)								
ASSEMBLY MATERIAL NUMBER	NUMBER OF CIRCUITS	NUMBER OF PORTS	PEG STYLE	SIDE SHIELD TAB OPTION	DIM -A-	DIM -B-	DIM -C-	
X - NOT TOOLED								
44248-0085	8	2	SNAP-FIT	A	1.274/32.36	1.120/28.45	.469/11.92	
44248-0086	8	4	SNAP-FIT	A	2.514/63.86	2.360/59.94	.469/11.92	
44248-0089	8	2	PRESS-FIT	A	1.274/32.36	1.120/28.45	.469/11.92	
44248-0090	8	4	PRESS-FIT	A	2.514/63.86	2.360/59.94	.469/11.92	
X								
44248-0119	8	4	PRESS FIT	B	2.514/63.86	2.360/59.94	.469/11.92	



(6) CIRCUIT HOUSING(S)								
ASSEMBLY MATERIAL NUMBER	NUMBER OF CIRCUITS	NUMBER OF PORTS	PEG STYLE	SIDE SHIELD TAB OPTION	DIM -A-	DIM -B-	DIM -C-	
44248-0093	6	2	SNAP-FIT	A	1.274/32.36	1.120/28.45	.389/9.88	
44248-0094	4	2	SNAP-FIT	A	1.274/32.36	1.120/28.45	.389/9.88	
44248-0095	6	4	SNAP-FIT	A	2.514/63.86	2.360/59.94	.389/9.88	
44248-0096	4	4	SNAP-FIT	A	2.514/63.86	2.360/59.94	.389/9.88	
44248-0101	6	2	PRESS-FIT	A	1.274/32.36	1.120/28.45	.389/9.88	
44248-0102	4	2	PRESS-FIT	A	1.274/32.36	1.120/28.45	.389/9.88	
44248-0103	6	4	PRESS-FIT	A	2.514/63.86	2.360/59.94	.389/9.88	
44248-0104	4	4	PRESS-FIT	A	2.514/63.86	2.360/59.94	.389/9.88	

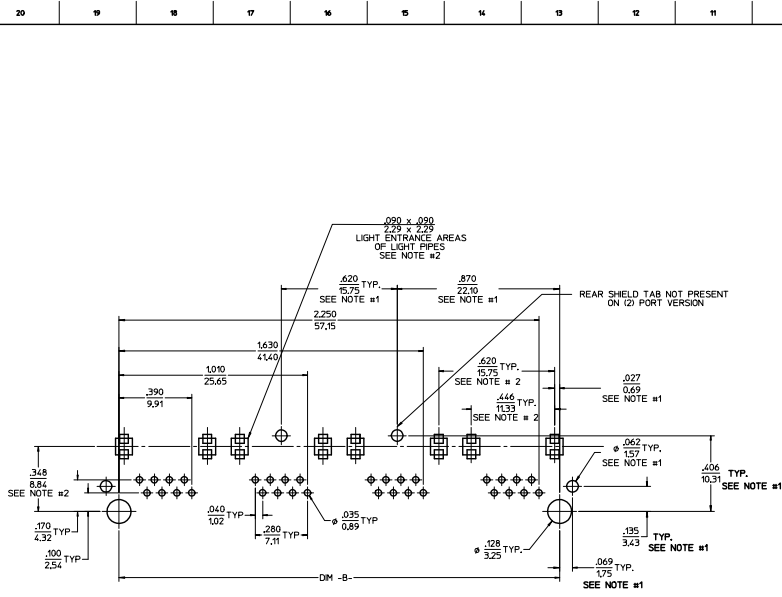


- NOTES:
- MATERIAL: HOUSING: POLYESTER(PBT), GLASS FILLED, UL94V-0, COLOR: BLACK
TERMINALS: PHOSPHOR BRONZE
SHIELD: BRASS
 - TERMINALS: SELECT GOLD IN CONTACT AREA: 50 MICRONS (1.27 MICROMETERS) MIN.
SELECT TIN IN PC TAIL AREA: 100 MICRONS (2.54 MICROMETERS) MIN.
WITH OVERALL NICKEL UNDERPLATE: 50 MICRONS (1.27 MICROMETERS) MIN.
SHIELD: 100 MICRONS (2.54 MICROMETERS) NICKEL OVER 50 MICRONS (1.27 MICROMETERS) COPPER UNDERPLATE FOR GROUND TABS DIPPED IN TIN
 - PRODUCT SPECIFICATION AND PROCESSING PARAMETERS: PS-43860-003.
 - PACKAGING SPECIFICATION: CONNECTOR ASSEMBLIES IN THERMOFORMED TRAYS PER MOLEX PACKAGING SPECIFICATION PK-44248-004.
 - ALL UNTOLERANCED DIMENSIONS ARE SHOWN FOR REFERENCE ONLY.
 - CONFORMS TO FCC REGULATION PART 48.5 FOR MODULAR JACKS.
 - MODJACKS AVAILABLE WITH EITHER SNAP-FIT OR PRESS-FIT PEGS.
 - THIS DRAWING SHOWS SNAP-FIT PEGS.
 - PCB LAYOUT AND PANEL CUT-OUT SHOWN ON SHEETS (5) AND (6).
 - THIS PART CONFORMS TO CLASS B REQUIREMENTS OF COSMETIC SPECIFICATION PS-45499-002.

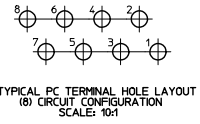
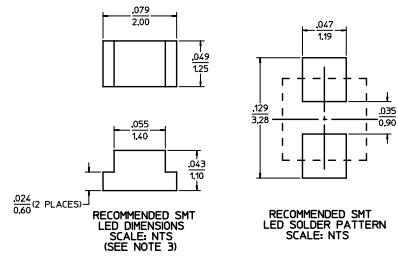
SHIELDED

SEE SHEET 1 REC. NO. 4879 2010/05/09 CHEN/BEILL APPROVED 2010/06/02 100	QUALITY SYMBOLS	GENERAL TOLERANCES (UNLESS SPECIFIED)	DIMENSION STYLE	SCALE	DESIGN UNITS	THIRD ANGLE PROJECTION
		mm INCH	IN/MM	4:1	INCH	
	∇=0 4 PLACES ±--- ±--- ∇=0 3 PLACES ±--- ±.010 2 PLACES ±--- ±.025 ±--- ∇=0 1 PLACE ±--- ±--- 0 PLACE ±--- ±---	DRAWN BY MMAYO 98/10/06 CHECKED BY JROBERTS 98/10/06 APPROVED BY JROBERTS 98/10/06	MATERIAL NO. SEE CHART DOCUMENT NO. SD-44248-001	TITLE GANGED INVERTED MODJACK ASSEMBLY SHEET NO. 4 OF 6		

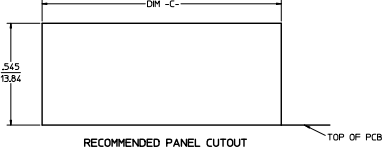
19 18 17 16 15 14 13 12 11 10 9 8 7 6 5 4 3 2 1



8 CIRCUIT PCB LAYOUT: COMPONENT SIDE
RECOMMENDED PCB THICKNESS: .062/1.57
TOLERANCE ±.003/.076 UNLESS OTHERWISE SPECIFIED



- NOTES:
- 1) DIMENSIONS MARKED "SEE NOTE #1" REFER TO ASSEMBLIES WITH THE SHIELDING OPTION INCLUDED
 - 2) DIMENSIONS MARKED "SEE NOTE #2" REFER TO ASSEMBLIES WITH THE LIGHT PIPE OPTION INCLUDED
 - 3) FOR CROSS REFERENCE OF RECOMMENDED LEADS SEE MOLEX WEB SITE.



NUMBER OF PORTS	DIM -B-	DIM -C-
2	1.120/28.45	1.280/32.51
4	2.360/59.94	2.520/64.01

SEE SHEET 1 REC. NO. 1027003-4879 20/05/09 CDR. WANG/WHEN CHKD. BELL 20/05/09 APPROVED 20/05/09 (Signature)	QUALITY SYMBOLS	GENERAL TOLERANCES (UNLESS SPECIFIED)	DIMENSION STYLE	SCALE	DESIGN UNITS	THIRD ANGLE PROJECTION	
	∇=0 ∇=0 ∇=0	mm INCH 4 PLACES ±--- ±--- 3 PLACES ±--- ±.010 2 PLACES ±0.25 ±--- 1 PLACE ±--- ±--- 0 PLACE ±--- ±---	IN/MM DRAWN BY MMAYO 98/10/06 CHECKED BY JROBERTS 98/10/06 APPROVED BY JROBERTS 98/10/06	DATE DATE DATE	4:1	INCH	THIRD ANGLE PROJECTION GANGED INVERTED MODJACK ASSEMBLY
	ANGULAR ±1/2° DRAFT WHERE APPLICABLE MUST REMAIN WITHIN DIMENSIONS	MATERIAL NO. N/A	DOCUMENT NO. SD-44248-001	SHEET NO. 5 OF 6			
	THIS DRAWING CONTAINS INFORMATION THAT IS PROPRIETARY TO MOLEX INCORPORATED AND SHOULD NOT BE USED WITHOUT WRITTEN PERMISSION						

