

Excellent Integrated System Limited

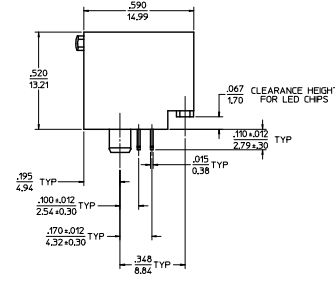
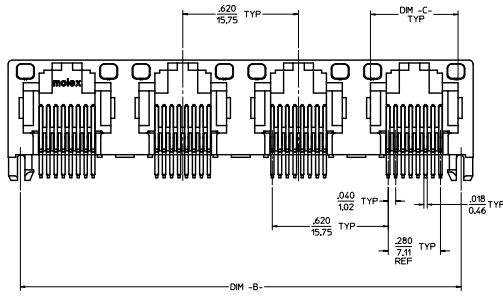
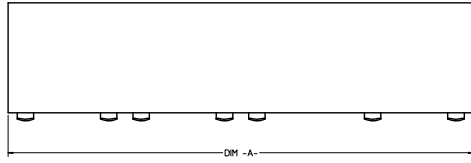
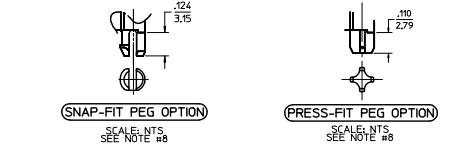
Stocking Distributor

Click to view price, real time Inventory, Delivery & Lifecycle Information:

[Molex Connector Corporation](#)
[0442480017](#)

For any questions, you can email us directly:

sales@integrated-circuit.com



8 CIRCUIT HOUSING(S)						
ASSEMBLY MATERIAL NUMBER	NUMBER OF CIRCUITS	NUMBER OF PORTS	PEG STYLE	DIM -A-	DIM -B-	DIM -C-
44248-0001	8	2	SNAP-FIT	1.250/31.75	1.120/28.45	.469/11.92
44248-0002	8	4	SNAP-FIT	2.490/63.25	2.360/59.94	.469/11.92
44248-0005	8	2	PRESS-FIT	1.250/31.75	1.120/28.45	.469/11.92
44248-0006	8	4	PRESS-FIT	2.490/63.25	2.360/59.94	.469/11.92

6 CIRCUIT HOUSING(S)						
ASSEMBLY MATERIAL NUMBER	NUMBER OF CIRCUITS	NUMBER OF PORTS	PEG STYLE	DIM -A-	DIM -B-	DIM -C-
44248-0009	6	2	SNAP-FIT	1.250/31.75	1.120/28.45	.389/9.88
44248-0010	4	2	SNAP-FIT	1.250/31.75	1.120/28.45	.389/9.88
44248-0011	6	4	SNAP-FIT	2.490/63.25	2.360/59.94	.389/9.88
44248-0012	4	4	SNAP-FIT	2.490/63.25	2.360/59.94	.389/9.88
44248-0017	6	2	PRESS-FIT	1.250/31.75	1.120/28.45	.389/9.88
44248-0018	4	2	PRESS-FIT	1.250/31.75	1.120/28.45	.389/9.88
44248-0019	6	4	PRESS-FIT	2.490/63.25	2.360/59.94	.389/9.88
44248-0020	4	4	PRESS-FIT	2.490/63.25	2.360/59.94	.389/9.88

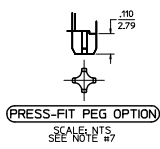
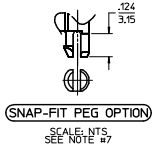
- NOTES:
 1) MATERIAL:
 HOUSING: POLYESTER(PBT), GLASS FILLED, UL94V-0, COLOR: BLACK
 LIGHT PIPES: POLYCARBONATE, UL-94V2, COLOR: CLEAR
 TERMINALS: PHOSPHOR BRONZE
 2) FINISH:
 TERMINALS:
 SELECT GOLD IN CONTACT AREA: 50 MICRONS (1.27 MICROMETERS) MIN.
 SELECT TRN IN PC TAIL AREA: 100 MICRONS (2.54 MICROMETERS) MIN.
 WITH OVERALL NICKEL UNDERLAY: 50 MICRONS (1.27 MICROMETERS) MIN.
 3) PRODUCT SPECIFICATION AND PROCESSING PARAMETERS: PS-43860-003.
 4) PACKAGING SPECIFICATION:
 CONNECTOR ASSEMBLIES IN THERMOFORMED TRAYS PER MOLEX PACKAGING SPECIFICATION PK-44248-004.
 APPLICATION SPECIFICATION: AS-43860-001
 5) ALL UNTOLERANCED DIMENSIONS ARE SHOWN FOR REFERENCE ONLY.
 6) CONFORMS TO FCC REGULATION PART 685 FOR MODULAR JACKS.
 7) MODJACKS AVAILABLE WITH EITHER SNAP-FIT OR PRESS-FIT PEGS.
 THIS DRAWING SHOWS SNAP-FIT PEGS.
 8) PCB LAYOUT AND PANEL CUT-OUT SHOWN ON SHEETS (5) AND (6).
 9) THIS PART CONFORMS TO CLASS B REQUIREMENTS OF COSMETIC SPECIFICATION PS-45499-002.

UNSHIELDED WITH LIGHT PIPES

ADD TAIL TOI EC NO. UEP7003-4879 DRAWN/REVISED CHKD/BELL APPROVED/MS DATE 2010/05/09 2010/05/09 2010/06/02	QUALITY SYMBOLS	GENERAL TOLERANCES (UNLESS SPECIFIED)	DIMENSION STYLE	SCALE	DESIGN UNITS	THIRD ANGLE PROJECTION
	$\nabla=0$ $\nabla=0$ $\nabla=0$	mm INCH 4 PLACES ± --- ± --- 3 PLACES ± --- ± .010 2 PLACES ± 0.25 ± --- 1 PLACE ± --- ± --- 0 PLACE ± --- ± ---	IN/MM DRAWN BY DATE 98/10/06 CHECKED BY DATE 98/10/06 APPROVED BY DATE 98/10/06	4:1	INCH	THIRD ANGLE PROJECTION
	GANGED INVERTED MODJACK ASSEMBLY					

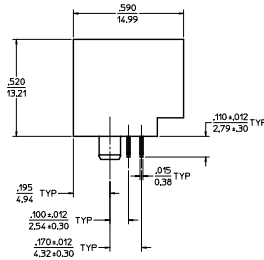
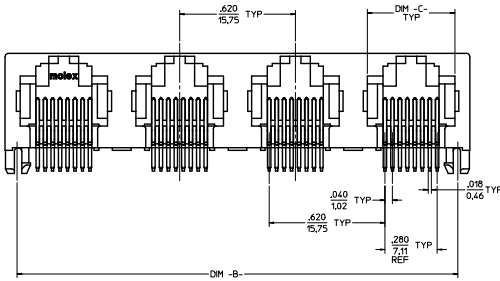
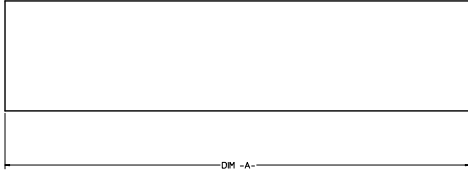
DOCUMENT NO. SD-44248-001 SHEET NO. 1 OF 6

ANGULAR ±1/2°
 DRAFT WHERE APPLICABLE MUST REMAIN WITHIN DIMENSIONS
 SEE CHART
 THIS DRAWING CONTAINS INFORMATION THAT IS PROPRIETARY TO MOLEX INCORPORATED AND SHOULD NOT BE USED WITHOUT WRITTEN PERMISSION



8 CIRCUIT HOUSING(S)						
ASSEMBLY MATERIAL NUMBER	NUMBER OF CIRCUITS	NUMBER OF PORTS	PEG STYLE	DIM -A-	DIM -B-	DIM -C-
44248-0057	8	2	SNAP-FIT	1,250/31.75	1,120/28.45	.469/11.92
44248-0058	8	4	SNAP-FIT	2,490/63.25	2,360/59.94	.469/11.92
44248-0061	8	2	PRESS-FIT	1,250/31.75	1,120/28.45	.469/11.92
44248-0062	8	4	PRESS-FIT	2,490/63.25	2,360/59.94	.469/11.92

6 CIRCUIT HOUSING(S)						
ASSEMBLY MATERIAL NUMBER	NUMBER OF CIRCUITS	NUMBER OF PORTS	PEG STYLE	DIM -A-	DIM -B-	DIM -C-
44248-0065	6	2	SNAP-FIT	1,250/31.75	1,120/28.45	.389/9.88
44248-0066	4	2	SNAP-FIT	1,250/31.75	1,120/28.45	.389/9.88
44248-0067	6	4	SNAP-FIT	2,490/63.25	2,360/59.94	.389/9.88
44248-0068	4	4	SNAP-FIT	2,490/63.25	2,360/59.94	.389/9.88
44248-0073	6	2	PRESS-FIT	1,250/31.75	1,120/28.45	.389/9.88
44248-0074	4	2	PRESS-FIT	1,250/31.75	1,120/28.45	.389/9.88
44248-0075	6	4	PRESS-FIT	2,490/63.25	2,360/59.94	.389/9.88
44248-0076	4	4	PRESS-FIT	2,490/63.25	2,360/59.94	.389/9.88

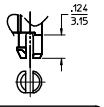


- NOTES:
- MATERIAL: HOUSING: POLYESTER(PBT), GLASS FILLED, UL94V-0, COLOR: BLACK
TERMINALS: PHOSPHOR BRONZE
 - FINISH: TERMINALS: SELECT GOLD IN CONTACT AREA; 50 MICRONS (1.27 MICROMETERS) MIN. WITH OVERALL NICKEL UNDERPLATE; 50 MICRONS (1.27 MICROMETERS) MIN.
 - PRODUCT SPECIFICATION AND PROCESSING PARAMETERS: PS-42860-003
 - PACKAGING SPECIFICATIONS: CONNECTOR ASSEMBLIES IN THERMOFORMED TRAYS PER MOLEX PACKAGING SPECIFICATION PK-42248-004.
 - ALL UNTOLERANCED DIMENSIONS ARE SHOWN FOR REFERENCE ONLY.
 - CONFORMS TO FCC REGULATION PART 68.5 FOR MODULAR JACKS.
 - MODJACKS AVAILABLE WITH EITHER SNAP-FIT OR PRESS-FIT PEGS. THIS DRAWING SHOWS SNAP-FIT PEGS.
 - PCB LAYOUT AND PANEL CUT-OUT SHOWN ON SHEETS (5) AND (6).
 - THIS PART CONFORMS TO CLASS B REQUIREMENTS OF COSMETIC SPECIFICATION PS-45499-002.

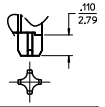
UNSHIELDED

SEE SHEET 1 REC. NO. 1027013-4879 DRAWING/REV. 2010/05/09 CHK'D/BELL 2010/05/09 APPR'D/SW/01 2010/06/02 (DATE)	QUALITY SYMBOLS	GENERAL TOLERANCES (UNLESS SPECIFIED)	DIMENSION STYLE IN/MM DRAWN BY DATE TITLE M MAYO 98/10/06 CHECKED BY DATE J ROBERTS 98/10/06 APPROVED BY DATE J ROBERTS 98/10/06	SCALE 4:1	DESIGN UNITS INCH	THIRD ANGLE PROJECTION	
	4 PLACES ±.000 3 PLACES ±.010 2 PLACES ±.025 1 PLACE ±.050 0 PLACE ±.100	.mm .INCH ±.000 ±.010 ±.025 ±.050 ±.100	MATERIAL NO. SEE CHART DRAFT WHERE APPLICABLE MUST REMAIN WITHIN DIMENSIONS SIZE D THIS DRAWING CONTAINS INFORMATION THAT IS PROPRIETARY TO MOLEX INCORPORATED AND SHOULD NOT BE USED WITHOUT WRITTEN PERMISSION	DOCUMENT NO. SD-44248-001	SHEET NO. 3 OF 6		

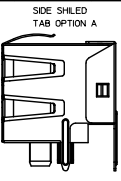
20 19 18 17 16 15 14 13 12 11 10 9 8 7 6 5 4 3 2 1



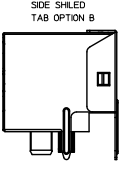
(SNAP-FIT PEG OPTION)
SCALE: NTS.
SEE NOTE #7



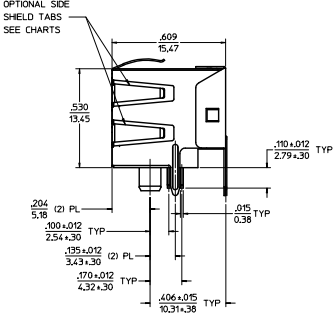
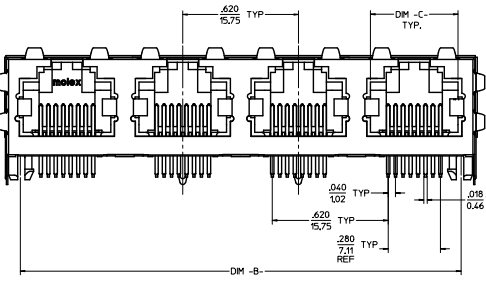
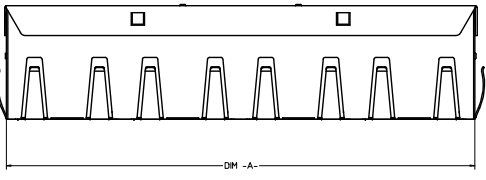
(PRESS-FIT PEG OPTION)
SCALE: NTS.
SEE NOTE #7



SIDE SHIELDED TAB OPTION A



SIDE SHIELDED TAB OPTION B



OPTIONAL SIDE SHIELDED TABS SEE CHARTS

(8) CIRCUIT HOUSING(S)

X - NOT TOOLED	ASSEMBLY MATERIAL NUMBER	NUMBER OF CIRCUITS	NUMBER OF PORTS	PEG STYLE	SIDE SHIELD TAB OPTION	DIM -A-	DIM -B-	DIM -C-
	44248-0085	8	2	SNAP-FIT	A	1.274/32.36	1.120/28.45	.469/11.92
	44248-0086	8	4	SNAP-FIT	A	2.514/63.86	2.360/59.94	.469/11.92
	44248-0089	8	2	PRESS-FIT	A	1.274/32.36	1.120/28.45	.469/11.92
	44248-0090	8	4	PRESS-FIT	A	2.514/63.86	2.360/59.94	.469/11.92
X	44248-0119	8	4	PRESS FIT	B	2.514/63.86	2.360/59.94	.469/11.92

(6) CIRCUIT HOUSING(S)

ASSEMBLY MATERIAL NUMBER	NUMBER OF CIRCUITS	NUMBER OF PORTS	PEG STYLE	SIDE SHIELD TAB OPTION	DIM -A-	DIM -B-	DIM -C-
44248-0093	6	2	SNAP-FIT	A	1.274/32.36	1.120/28.45	.389/9.88
44248-0094	4	2	SNAP-FIT	A	1.274/32.36	1.120/28.45	.389/9.88
44248-0095	6	4	SNAP-FIT	A	2.514/63.86	2.360/59.94	.389/9.88
44248-0096	4	4	SNAP-FIT	A	2.514/63.86	2.360/59.94	.389/9.88
44248-0101	6	2	PRESS-FIT	A	1.274/32.36	1.120/28.45	.389/9.88
44248-0102	4	2	PRESS-FIT	A	1.274/32.36	1.120/28.45	.389/9.88
44248-0103	6	4	PRESS-FIT	A	2.514/63.86	2.360/59.94	.389/9.88
44248-0104	4	4	PRESS-FIT	A	2.514/63.86	2.360/59.94	.389/9.88

- NOTES:**
- MATERIAL:**
HOUSING: POLYESTER(PBT), GLASS FILLED, UL94V-0, COLOR: BLACK
TERMINALS: PHOSPHOR BRONZE
SHIELD: BRASS
 - FINISH:**
TERMINALS:
SELECT GOLD IN CONTACT AREA: 50 MICRONS (1.27 MICROMETERS) MIN.
SELECT TIN IN PC TAIL AREA: 100 MICRONS (2.54 MICROMETERS) MIN.
WITH OVERALL NICKEL UNDERPLATE: 50 MICRONS (1.27 MICROMETERS) MIN.
SHIELD:
100 MICRONS (2.54 MICROMETERS) NICKEL OVER 50 MICRONS (1.27 MICROMETERS) COPPER UNDERPLATE FOR GROUND TABS DIPPED IN TIN
 - PRODUCT SPECIFICATION AND PROCESSING PARAMETERS:** PS-43860-003.
 - PACKAGING SPECIFICATION:** CONNECTOR ASSEMBLIES IN THERMOFORMED TRAYS PER MOLEX PACKAGING SPECIFICATION PK-44248-004.
 - ALL UNTOLERANCED DIMENSIONS ARE SHOWN FOR REFERENCE ONLY.**
 - CONFORMS TO FCC REGULATION PART 48.5 FOR MODULAR JACKS.**
 - MODJACKS AVAILABLE WITH EITHER SNAP-FIT OR PRESS-FIT PEGS.**
 - THIS DRAWING SHOWS SNAP-FIT PEGS.**
 - PCB LAYOUT AND PANEL CUT-OUT SHOWN ON SHEETS (5) AND (6).**
 - THIS PART CONFORMS TO CLASS B REQUIREMENTS OF COSMETIC SPECIFICATION PS-45499-002.**

SHIELDED

<p>SEE SHEET 1 REV. 5 C5</p>	<p>QUALITY SYMBOLS</p> <p>4 PLACES ± .010</p> <p>3 PLACES ± .025</p> <p>2 PLACES ± .050</p> <p>1 PLACE ± .100</p> <p>0 PLACE ± .150</p>	<p>GENERAL TOLERANCES (UNLESS SPECIFIED)</p> <table border="1"> <tr> <th>mm</th> <th>INCH</th> </tr> <tr> <td>± .10</td> <td>± .010</td> </tr> <tr> <td>± .25</td> <td>± .010</td> </tr> <tr> <td>± .50</td> <td>± .010</td> </tr> <tr> <td>± 1.00</td> <td>± .010</td> </tr> </table>	mm	INCH	± .10	± .010	± .25	± .010	± .50	± .010	± 1.00	± .010	<p>DIMENSION STYLE</p> <p>IN/MM</p>	<p>SCALE</p> <p>4:1</p>	<p>DESIGN UNITS</p> <p>INCH</p>	<p>THIRD ANGLE PROJECTION</p>
	mm	INCH														
	± .10	± .010														
	± .25	± .010														
± .50	± .010															
± 1.00	± .010															
<p>DRAWN BY</p> <p>MMAYO</p> <p>98/10/06</p>	<p>DATE</p> <p>98/10/06</p>	<p>TITLE</p> <p>GANGED INVERTED MODJACK ASSEMBLY</p>	<p>molex</p>													
<p>CREATED BY</p> <p>JROBERTS</p> <p>98/10/06</p>	<p>DATE</p> <p>98/10/06</p>	<p>APPROVED BY</p> <p>JROBERTS</p> <p>98/10/06</p>														
<p>DRAFT WHERE APPLICABLE MUST REMAIN WITHIN DIMENSIONS</p>	<p>ANGULAR ±1/2°</p>	<p>SEE CHART</p>	<p>MATERIAL NO.</p> <p>SD-44248-001</p>	<p>DOCUMENT NO.</p> <p>SD-44248-001</p>	<p>SHEET NO.</p> <p>4 OF 6</p>	<p>THIS DRAWING CONTAINS INFORMATION THAT IS PROPRIETARY TO MOLEX INCORPORATED AND SHOULD NOT BE USED WITHOUT WRITTEN PERMISSION</p>										

19 18 17 16 15 14 13 12 11 10 9 8 7 6 5 4 3 2 1

