

Excellent Integrated System Limited

Stocking Distributor

Click to view price, real time Inventory, Delivery & Lifecycle Information:

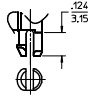
[Molex Connector Corporation](#)

[0442480074](#)

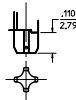
For any questions, you can email us directly:

sales@integrated-circuit.com

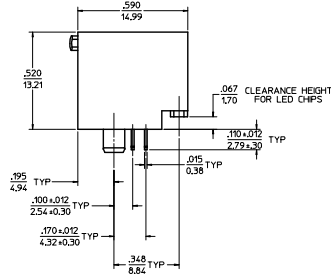
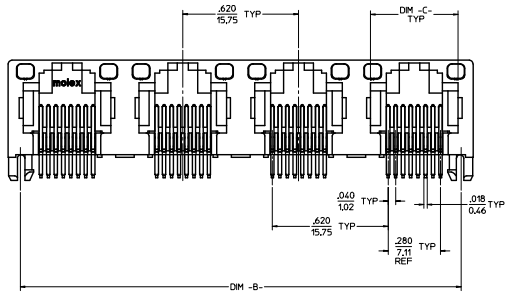
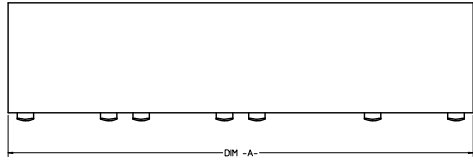
20 19 18 17 16 15 14 13 12 11 10 9 8 7 6 5 4 3 2 1



SNAP-FIT PEG OPTION
SCALE: NTS
SEE NOTE #8



PRESS-FIT PEG OPTION
SCALE: NTS
SEE NOTE #8



| 8 CIRCUIT HOUSING(S) | | | | | | |
|--------------------------|--------------------|-----------------|-----------|-------------|-------------|------------|
| ASSEMBLY MATERIAL NUMBER | NUMBER OF CIRCUITS | NUMBER OF PORTS | PEG STYLE | DIM -A- | DIM -B- | DIM -C- |
| 44248-0001 | 8 | 2 | SNAP-FIT | 1.250/31.75 | 1.120/28.45 | .469/11.92 |
| 44248-0002 | 8 | 4 | SNAP-FIT | 2.490/63.25 | 2.360/59.94 | .469/11.92 |
| 44248-0005 | 8 | 2 | PRESS-FIT | 1.250/31.75 | 1.120/28.45 | .469/11.92 |
| 44248-0006 | 8 | 4 | PRESS-FIT | 2.490/63.25 | 2.360/59.94 | .469/11.92 |

| 6 CIRCUIT HOUSING(S) | | | | | | |
|--------------------------|--------------------|-----------------|-----------|-------------|-------------|-----------|
| ASSEMBLY MATERIAL NUMBER | NUMBER OF CIRCUITS | NUMBER OF PORTS | PEG STYLE | DIM -A- | DIM -B- | DIM -C- |
| 44248-0009 | 6 | 2 | SNAP-FIT | 1.250/31.75 | 1.120/28.45 | .389/9.88 |
| 44248-0010 | 4 | 2 | SNAP-FIT | 1.250/31.75 | 1.120/28.45 | .389/9.88 |
| 44248-0011 | 6 | 4 | SNAP-FIT | 2.490/63.25 | 2.360/59.94 | .389/9.88 |
| 44248-0012 | 4 | 4 | SNAP-FIT | 2.490/63.25 | 2.360/59.94 | .389/9.88 |
| 44248-0017 | 6 | 2 | PRESS-FIT | 1.250/31.75 | 1.120/28.45 | .389/9.88 |
| 44248-0018 | 4 | 2 | PRESS-FIT | 1.250/31.75 | 1.120/28.45 | .389/9.88 |
| 44248-0019 | 6 | 4 | PRESS-FIT | 2.490/63.25 | 2.360/59.94 | .389/9.88 |
| 44248-0020 | 4 | 4 | PRESS-FIT | 2.490/63.25 | 2.360/59.94 | .389/9.88 |

- NOTES:
 1) MATERIAL:
 HOUSING: POLYESTER(PBT), GLASS FILLED, UL94V-0, COLOR: BLACK
 LIGHT PIPES: POLYCARBONATE, UL-94V2, COLOR: CLEAR
 TERMINALS: PHOSPHOR BRONZE
 2) FINISH:
 TERMINALS:
 SELECT GOLD IN CONTACT AREA: 50 MICRONS (1.27 MICROMETERS) MIN.
 SELECT TRN IN PC TAIL AREA: 100 MICRONS (2.54 MICROMETERS) MIN.
 WITH OVERALL NICKEL UNDERLAY: 50 MICRONS (1.27 MICROMETERS) MIN.
 3) PRODUCT SPECIFICATION AND PROCESSING PARAMETERS: PS-43860-003.
 4) PACKAGING SPECIFICATION:
 CONNECTOR ASSEMBLIES IN THERMOFORMED TRAYS PER MOLEX PACKAGING SPECIFICATION PK-44248-004.
 5) APPLICATION SPECIFICATION: AS-43860-001
 6) ALL UNTOLERANCED DIMENSIONS ARE SHOWN FOR REFERENCE ONLY.
 7) CONFORMS TO FCC REGULATION PART 68.5 FOR MODULAR JACKS.
 8) MODJACKS AVAILABLE WITH EITHER SNAP-FIT OR PRESS-FIT PEGS.
 THIS DRAWING SHOWS SNAP-FIT PEGS.
 9) PCB LAYOUT AND PANEL CUT-OUT SHOWN ON SHEETS (5) AND (6).
 10) THIS PART CONFORMS TO CLASS B REQUIREMENTS OF COSMETIC SPECIFICATION PS-45499-002.

UNSHIELDED WITH LIGHT PIPES

| | | | | | | |
|---|--|---------------------------------------|-----------------|-------|--------------|------------------------|
| ADD TAIL TOI EC NO. UEP7003-4879 DRAWN/REVISED CHKD/BELL APPR/SMITH DATE 2010/05/09 2010/05/09 2010/06/01 | QUALITY SYMBOLS | GENERAL TOLERANCES (UNLESS SPECIFIED) | DIMENSION STYLE | SCALE | DESIGN UNITS | THIRD ANGLE PROJECTION |
| | 4 PLACES ± .010 3 PLACES ± .010 2 PLACES ± 0.25 1 PLACE ± .010 0 PLACE ± .010 | mm INCH | IN/MM | 4:1 | INCH | THIRD ANGLE PROJECTION |
| | DRAWN BY: M MAYO CHECKED BY: J ROBERTS APPROVED BY: J ROBERTS DATE: 98/10/06 DATE: 98/10/06 DATE: 98/10/06 | | | | | |
| | MATERIAL NO. SEE CHART DRAFT WHERE APPLICABLE MUST REMAIN WITHIN DIMENSIONS SIZE D THIS DRAWING CONTAINS INFORMATION THAT IS PROPRIETARY TO MOLEX INCORPORATED AND SHOULD NOT BE USED WITHOUT WRITTEN PERMISSION | | | | | |

GANGED INVERTED MODJACK ASSEMBLY

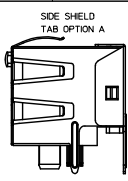
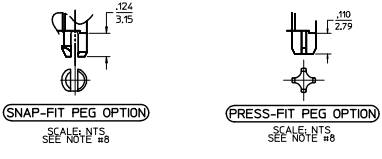


DOCUMENT NO. SD-44248-001

SHEET NO. 1 OF 6

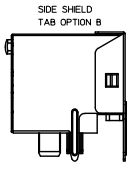
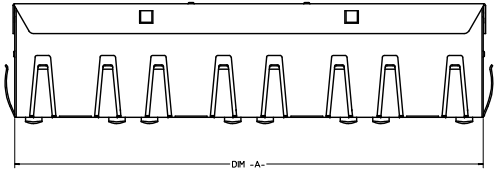
19 18 17 16 15 14 13 12 11 10 9 8 7 6 5 4 3 2 1

20 19 18 17 16 15 14 13 12 11 10 9 8 7 6 5 4 3 2 1



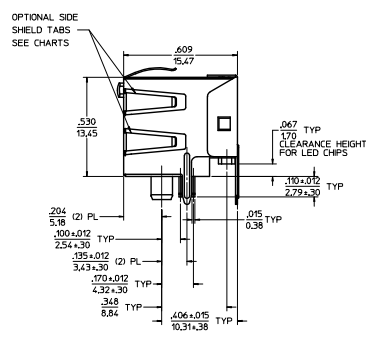
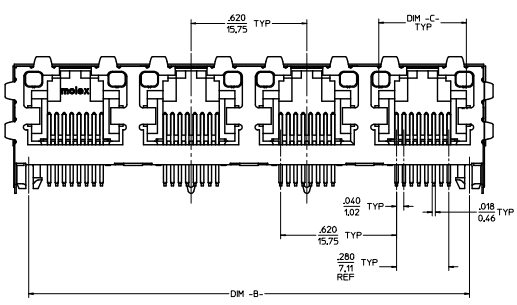
(8) CIRCUIT HOUSING(S)

| ASSEMBLY MATERIAL NUMBER | NUMBER OF CIRCUITS | NUMBER OF PORTS | PEG STYLE | SIDE SHIELD TAB OPTION | DIM -A- | DIM -B- | DIM -C- |
|--------------------------|--------------------|-----------------|-----------|------------------------|-------------|-------------|------------|
| 44248-0029 | 8 | 2 | SNAP-FIT | A | 1,274/32.36 | 1,120/28.45 | .469/11.92 |
| 44248-0030 | 8 | 4 | SNAP-FIT | A | 2,514/63.86 | 2,360/59.94 | .469/11.92 |
| 44248-0033 | 8 | 2 | PRESS-FIT | A | 1,274/32.36 | 1,120/28.45 | .469/11.92 |
| 44248-0034 | 8 | 4 | PRESS-FIT | A | 2,514/63.86 | 2,360/59.94 | .469/11.92 |



(6) CIRCUIT HOUSING(S)

| ASSEMBLY MATERIAL NUMBER | NUMBER OF CIRCUITS | NUMBER OF PORTS | PEG STYLE | SIDE SHIELD TAB OPTION | DIM -A- | DIM -B- | DIM -C- |
|--------------------------|--------------------|-----------------|-----------|------------------------|-------------|-------------|-----------|
| 44248-0037 | 6 | 2 | SNAP-FIT | A | 1,274/32.36 | 1,120/28.45 | .389/9.88 |
| 44248-0038 | 4 | 2 | SNAP-FIT | A | 1,274/32.36 | 1,120/28.45 | .389/9.88 |
| 44248-0039 | 6 | 4 | SNAP-FIT | A | 2,514/63.86 | 2,360/59.94 | .389/9.88 |
| 44248-0040 | 4 | 4 | SNAP-FIT | A | 2,514/63.86 | 2,360/59.94 | .389/9.88 |
| 44248-0045 | 6 | 2 | PRESS-FIT | A | 1,274/32.36 | 1,120/28.45 | .389/9.88 |
| 44248-0046 | 4 | 2 | PRESS-FIT | A | 1,274/32.36 | 1,120/28.45 | .389/9.88 |
| 44248-0047 | 6 | 4 | PRESS-FIT | A | 2,514/63.86 | 2,360/59.94 | .389/9.88 |
| 44248-0048 | 4 | 4 | PRESS-FIT | A | 2,514/63.86 | 2,360/59.94 | .389/9.88 |

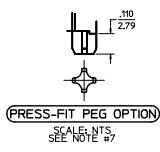
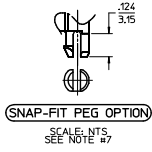


- NOTES:
- 1) MATERIAL: HOUSING: POLYESTER(PBT), GLASS FILLED, UL94V-0, COLOR: BLACK
LIGHT PIPES: POLYCARBONATE, UL-94V2, COLOR: CLEAR
TERMINALS: PHOSPHOR BRONZE
SHIELD: BRASS
 - 2) FINISH: TERMINALS: SELECT GOLD IN CONTACT AREA: 50 MICRONS (1.27 MICROMETERS) MIN.
SELECT TIN IN PC TAIL AREA: 100 MICRONS (2.54 MICROMETERS) MIN.
WITH OVERALL NICKEL UNDERPLATE: 50 MICRONS (1.27 MICROMETERS) MIN.
SHIELD: 100 MICRONS (2.54 MICROMETERS) NICKEL OVER 50 MICRONS (1.27 MICROMETERS) COPPER UNDERPLATE PCB GROUND TABS DIPPED IN TIN
 - 3) PRODUCT SPECIFICATION AND PROCESSING PARAMETERS: PS-4360-003.
 - 4) PACKAGING SPECIFICATION: CONNECTOR ASSEMBLIES IN THERMOFORMED TRAYS PER MOLEX PACKAGING SPECIFICATION PK-44248-004.
 - 5) APPLICATION SPECIFICATION: AS-4860-001
 - 6) ALL UNTOLERANCED DIMENSIONS ARE SHOWN FOR REFERENCE ONLY.
 - 7) CONFORMS TO FCC REGULATION PART 68.5 FOR MODULAR JACKS.
 - 8) MODULAR JACKS AVAILABLE WITH EITHER SNAP-FIT OR PRESS-FIT PEGS. THIS DRAWING SHOWS SNAP-FIT PEGS.
 - 9) PCB LAYOUT AND PANEL CUT-OUT SHOWN ON SHEETS (5) AND (6).
 - 10) THIS PART CONFORMS TO CLASS B REQUIREMENTS OF COSMETIC SPECIFICATION PS-45499-002.

SHIELDED WITH LIGHT PIPES

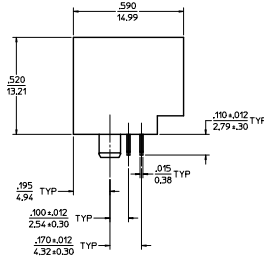
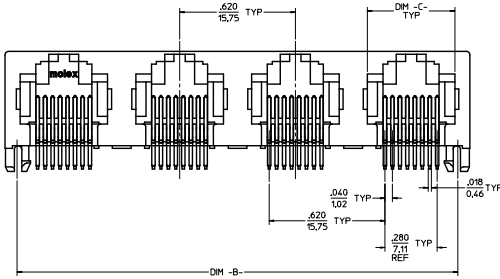
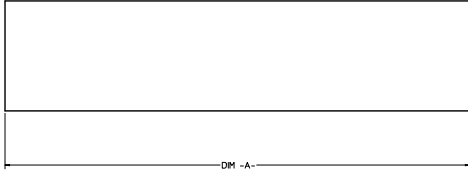
| QUALITY SYMBOLS | GENERAL TOLERANCES (UNLESS SPECIFIED) | | DIMENSION STYLE | | SCALE | DESIGN UNITS | THIRD ANGLE PROJECTION |
|-----------------|---------------------------------------|--------|--|----------|-------|--------------|----------------------------------|
| | mm | INCH | IN/MM | IN/MM | | | |
| ∇=0 | 4 PLACES | ± .010 | MAYO | 98/10/06 | 4:1 | INCH | GANGED INVERTED MODJACK ASSEMBLY |
| ∇=0 | 3 PLACES | ± .025 | JROBERTS | 98/10/06 | | | |
| ∇=0 | 1 PLACE | ± .010 | JROBERTS | 98/10/06 | | | |
| | | | MATERIAL NO. SEE CHART | | | | molex |
| | | | DRAWING NO. SD-44248-001 | | | | |
| | | | DRAFT WHERE APPLICABLE MUST REMAIN WITHIN DIMENSIONS | | | | SHEET NO. 2 OF 6 |
| | | | SIZE D THIS DRAWING CONTAINS INFORMATION THAT IS PROPRIETARY TO MOLEX INCORPORATED AND SHOULD NOT BE USED WITHOUT WRITTEN PERMISSION | | | | |

Rev. 0, 04/11/11 19 18 17 16 15 14 13 12 11 10 9 8 7 6 5 4 3 2 1



| 8 CIRCUIT HOUSING(S) | | | | | | |
|--------------------------|--------------------|-----------------|-----------|-------------|-------------|------------|
| ASSEMBLY MATERIAL NUMBER | NUMBER OF CIRCUITS | NUMBER OF PORTS | PEG STYLE | DIM -A- | DIM -B- | DIM -C- |
| 44248-0057 | 8 | 2 | SNAP-FIT | 1,250/31.75 | 1,120/28.45 | .469/11.92 |
| 44248-0058 | 8 | 4 | SNAP-FIT | 2,490/63.25 | 2,360/59.94 | .469/11.92 |
| 44248-0061 | 8 | 2 | PRESS-FIT | 1,250/31.75 | 1,120/28.45 | .469/11.92 |
| 44248-0062 | 8 | 4 | PRESS-FIT | 2,490/63.25 | 2,360/59.94 | .469/11.92 |

| 6 CIRCUIT HOUSING(S) | | | | | | |
|--------------------------|--------------------|-----------------|-----------|-------------|-------------|-----------|
| ASSEMBLY MATERIAL NUMBER | NUMBER OF CIRCUITS | NUMBER OF PORTS | PEG STYLE | DIM -A- | DIM -B- | DIM -C- |
| 44248-0065 | 6 | 2 | SNAP-FIT | 1,250/31.75 | 1,120/28.45 | .389/9.88 |
| 44248-0066 | 4 | 2 | SNAP-FIT | 1,250/31.75 | 1,120/28.45 | .389/9.88 |
| 44248-0067 | 6 | 4 | SNAP-FIT | 2,490/63.25 | 2,360/59.94 | .389/9.88 |
| 44248-0068 | 4 | 4 | SNAP-FIT | 2,490/63.25 | 2,360/59.94 | .389/9.88 |
| 44248-0073 | 6 | 2 | PRESS-FIT | 1,250/31.75 | 1,120/28.45 | .389/9.88 |
| 44248-0074 | 4 | 2 | PRESS-FIT | 1,250/31.75 | 1,120/28.45 | .389/9.88 |
| 44248-0075 | 6 | 4 | PRESS-FIT | 2,490/63.25 | 2,360/59.94 | .389/9.88 |
| 44248-0076 | 4 | 4 | PRESS-FIT | 2,490/63.25 | 2,360/59.94 | .389/9.88 |



- NOTES:
- MATERIAL: HOUSING: POLYESTER(PBT), GLASS FILLED, UL94V-0, COLOR: BLACK
TERMINALS: PHOSPHOR BRONZE
 - FINISH: TERMINALS: SELECT GOLD IN CONTACT AREA; 50 MICRONS (1.27 MICROMETERS) MIN. WITH OVERALL NICKEL UNDERPLATE; 50 MICRONS (1.27 MICROMETERS) MIN.
 - PRODUCT SPECIFICATION AND PROCESSING PARAMETERS: PS-42860-003
 - PACKAGING SPECIFICATIONS: CONNECTOR ASSEMBLIES IN THERMOFORMED TRAYS PER MOLEX PACKAGING SPECIFICATION PK-42248-004.
 - ALL UNTOLERANCED DIMENSIONS ARE SHOWN FOR REFERENCE ONLY.
 - CONFORMS TO FCC REGULATION PART 68.5 FOR MODULAR JACKS.
 - MODJACKS AVAILABLE WITH EITHER SNAP-FIT OR PRESS-FIT PEGS. THIS DRAWING SHOWS SNAP-FIT PEGS.
 - PCB LAYOUT AND PANEL CUT-OUT SHOWN ON SHEETS (5) AND (6).
 - THIS PART CONFORMS TO CLASS B REQUIREMENTS OF COSMETIC SPECIFICATION PS-45499-002.

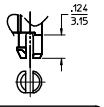
UNSHIELDED

| | | | | | | | |
|---|-------------------|--|---|--|---------------------------|------------------------|--|
| SEE SHEET 1 REC. NO. 1027013-4879 DRAWING/REV. 2010/05/09 CHK'D/BELL 2010/05/09 APPR'D/SMITH 2010/05/09 DESIGNED BY DRAWN BY CHECKED BY APPROVED BY | QUALITY SYMBOLS | GENERAL TOLERANCES (UNLESS SPECIFIED) | DIMENSION STYLE IN/MM | SCALE 4:1 | DESIGN UNITS INCH | THIRD ANGLE PROJECTION | |
| | ∇=0 ∇=0 ∇=0 | 4 PLACES ±.005 3 PLACES ±.010 2 PLACES ±.025 1 PLACE ±.050 0 PLACE ±.100 | mm INCH ±.005 ±.005 ±.010 ±.010 ±.025 ±.025 ±.050 ±.050 | DRAWN BY MMAYO DATE 98/10/06 CHECKED BY JROBERTS DATE 98/10/06 APPROVED BY JROBERTS DATE 98/10/06 | | | |
| | | MATERIAL NO. SEE CHART DRAFT WHERE APPLICABLE MUST REMAIN WITHIN DIMENSIONS | ANGULAR ±1/2° SIZE D THIS DRAWING CONTAINS INFORMATION THAT IS PROPRIETARY TO MOLEX INCORPORATED AND SHOULD NOT BE USED WITHOUT WRITTEN PERMISSION | | | | |
| | | | | | DOCUMENT NO. SD-44248-001 | SHEET NO. 3 OF 6 | |

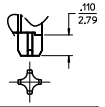
GANGED INVERTED MODJACK ASSEMBLY

molex

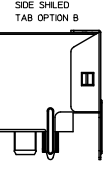
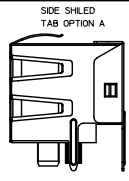
20 19 18 17 16 15 14 13 12 11 10 9 8 7 6 5 4 3 2 1



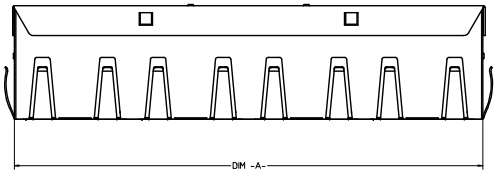
SNAP-FIT PEG OPTION
SCALE: NTS.
SEE NOTE #7



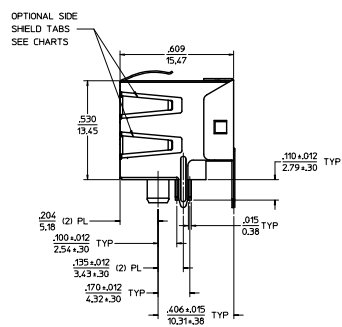
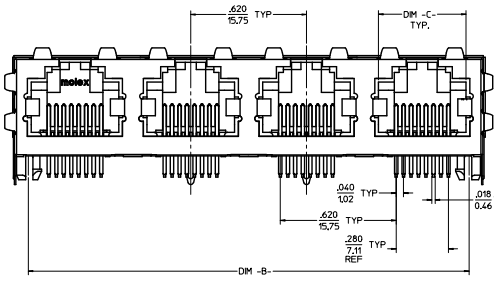
PRESS-FIT PEG OPTION
SCALE: NTS.
SEE NOTE #7



| (8) CIRCUIT HOUSING(S) | | | | | | | |
|--------------------------|--------------------|-----------------|-----------|-------------------------|-------------|-------------|------------|
| ASSEMBLY MATERIAL NUMBER | NUMBER OF CIRCUITS | NUMBER OF PORTS | PEG STYLE | SIDE SHELDED TAB OPTION | DIM -A- | DIM -B- | DIM -C- |
| X - NOT TOOLED | | | | | | | |
| 44248-0085 | 8 | 2 | SNAP-FIT | A | 1.274/32.36 | 1.120/28.45 | .469/11.92 |
| 44248-0086 | 8 | 4 | SNAP-FIT | A | 2.514/63.86 | 2.360/59.94 | .469/11.92 |
| 44248-0089 | 8 | 2 | PRESS-FIT | A | 1.274/32.36 | 1.120/28.45 | .469/11.92 |
| 44248-0090 | 8 | 4 | PRESS-FIT | A | 2.514/63.86 | 2.360/59.94 | .469/11.92 |
| X | | | | | | | |
| 44248-0119 | 8 | 4 | PRESS FIT | B | 2.514/63.86 | 2.360/59.94 | .469/11.92 |



| (6) CIRCUIT HOUSING(S) | | | | | | | |
|--------------------------|--------------------|-----------------|-----------|-------------------------|-------------|-------------|-----------|
| ASSEMBLY MATERIAL NUMBER | NUMBER OF CIRCUITS | NUMBER OF PORTS | PEG STYLE | SIDE SHELDED TAB OPTION | DIM -A- | DIM -B- | DIM -C- |
| 44248-0093 | 6 | 2 | SNAP-FIT | A | 1.274/32.36 | 1.120/28.45 | .389/9.88 |
| 44248-0094 | 4 | 2 | SNAP-FIT | A | 1.274/32.36 | 1.120/28.45 | .389/9.88 |
| 44248-0095 | 6 | 4 | SNAP-FIT | A | 2.514/63.86 | 2.360/59.94 | .389/9.88 |
| 44248-0096 | 4 | 4 | SNAP-FIT | A | 2.514/63.86 | 2.360/59.94 | .389/9.88 |
| 44248-0101 | 6 | 2 | PRESS-FIT | A | 1.274/32.36 | 1.120/28.45 | .389/9.88 |
| 44248-0102 | 4 | 2 | PRESS-FIT | A | 1.274/32.36 | 1.120/28.45 | .389/9.88 |
| 44248-0103 | 6 | 4 | PRESS-FIT | A | 2.514/63.86 | 2.360/59.94 | .389/9.88 |
| 44248-0104 | 4 | 4 | PRESS-FIT | A | 2.514/63.86 | 2.360/59.94 | .389/9.88 |

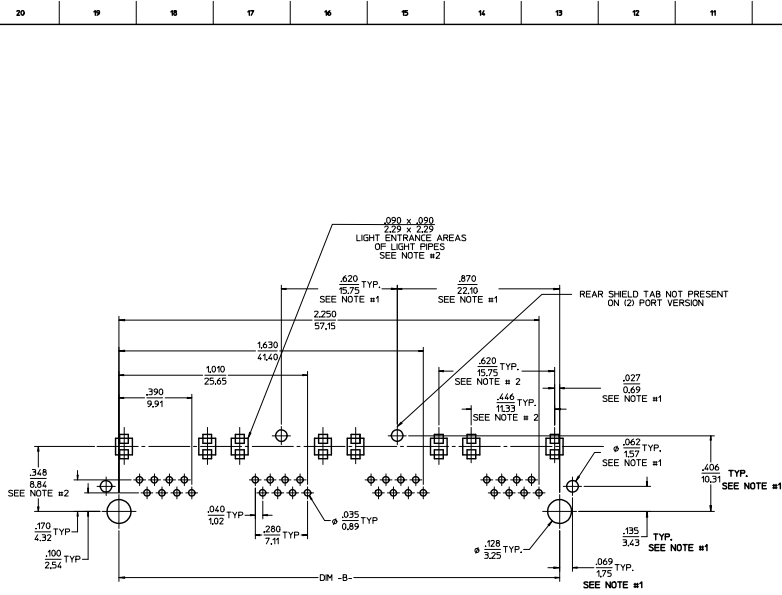


- NOTES:**
- MATERIAL:**
HOUSING: POLYESTER(PBT), GLASS FILLED, UL94V-0, COLOR: BLACK
TERMINALS: PHOSPHOR BRONZE
SHELD: BRASS
 - FINISH:**
TERMINALS:
SELECT GOLD IN CONTACT AREA: 50 MICRONS (1.27 MICROMETERS) MIN.
SELECT TIN IN PC TAIL AREA: 100 MICRONS (2.54 MICROMETERS) MIN.
WITH OVERALL NICKEL UNDERPLATE: 50 MICRONS (1.27 MICROMETERS) MIN.
SHELD:
100 MICRONS (2.54 MICROMETERS) NICKEL OVER 50 MICRONS (1.27 MICROMETERS) COPPER UNDERPLATE FOR GROUND TABS DIPPED IN TIN
 - PRODUCT SPECIFICATION AND PROCESSING PARAMETERS:** PS-43860-003.
 - PACKAGING SPECIFICATION:** CONNECTOR ASSEMBLIES IN THERMOFORMED TRAYS PER MOLEX PACKAGING SPECIFICATION PK-44248-004.
 - ALL UNTOLERANCED DIMENSIONS ARE SHOWN FOR REFERENCE ONLY.**
 - CONFORMS TO FCC REGULATION PART 48.5 FOR MODULAR JACKS.**
 - MODJACKS AVAILABLE WITH EITHER SNAP-FIT OR PRESS-FIT PEGS.**
 - THIS DRAWING SHOWS SNAP-FIT PEGS.**
 - PCB LAYOUT AND PANEL CUT-OUT SHOWN ON SHEETS (5) AND (6).**
 - THIS PART CONFORMS TO CLASS B REQUIREMENTS OF COSMETIC SPECIFICATION PS-45499-002.**

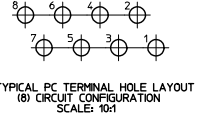
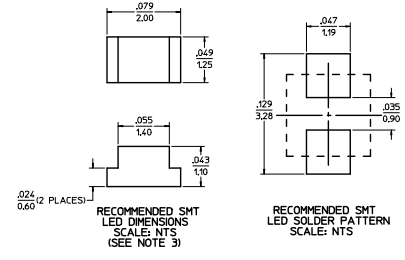
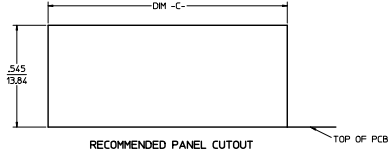
SHIELDED

| | | | | | | | |
|---|---|--|--|--|---------------------|-----------------------------|-------------------------------|
| QUALITY SYMBOLS ∇=0 ∇=0 ∇=0 | GENERAL TOLERANCES (UNLESS SPECIFIED) mm INCH | | DIMENSION STYLE IN/MM | | SCALE 4:1 | DESIGN UNITS INCH | THIRD ANGLE PROJECTION |
| | 4 PLACES ± .010 3 PLACES ± .025 2 PLACES ± .050 1 PLACE ± .100 0 PLACE ± .150 | | DRAWN BY: MMAYO CHECKED BY: JROBERTS APPROVED BY: JROBERTS DATE: 98/10/06 | | | | |
| | ANGULAR ±1/2° DRAFT WHERE APPLICABLE MUST REMAIN WITHIN DIMENSIONS | | MATERIAL NO.: SEE CHART SIZE: D THIS DRAWING CONTAINS INFORMATION THAT IS PROPRIETARY TO MOLEX INCORPORATED AND SHOULD NOT BE USED WITHOUT WRITTEN PERMISSION | | | | |
| | SEE SHEET 1 REC. NO. 4879 CHN. NO. 2010/05/09 CHN. NO. 2010/05/09 APPR. NO. 2010/05/09 DESIGNED BY: JROBERTS | | DOCUMENT NO.: SD-44248-001 SHEET NO.: 4 OF 6 | | | | |

19 18 17 16 15 14 13 12 11 10 9 8 7 6 5 4 3 2 1



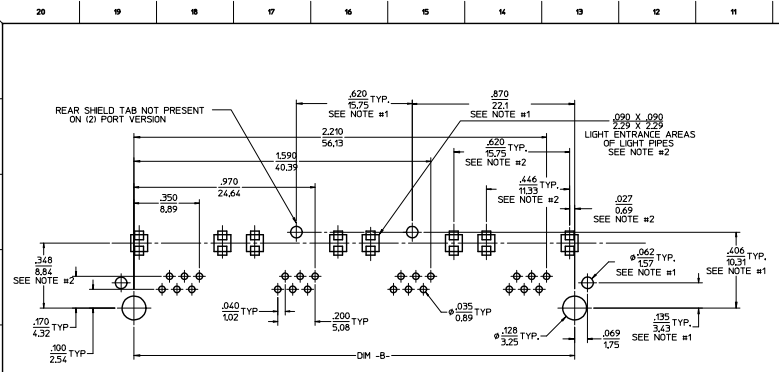
| NUMBER OF PORTS | DIM - B- | DIM - C- |
|-----------------|-------------|-------------|
| 2 | 1.120/28.45 | 1.280/32.51 |
| 4 | 2.360/59.94 | 2.520/64.01 |



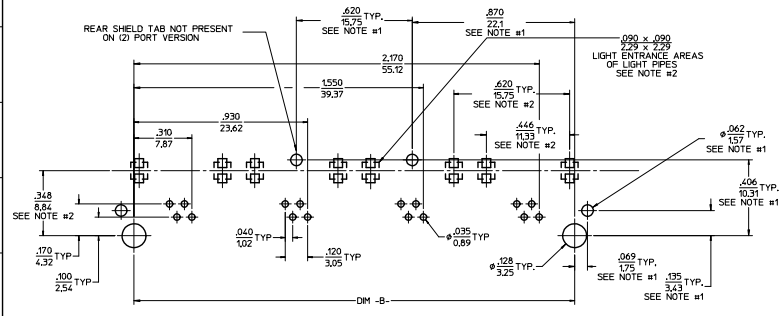
- NOTES:
- 1) DIMENSIONS MARKED "SEE NOTE #1" REFER TO ASSEMBLIES WITH THE SHIELDING OPTION INCLUDED
 - 2) DIMENSIONS MARKED "SEE NOTE #2" REFER TO ASSEMBLIES WITH THE LIGHT PIPE OPTION INCLUDED
 - 3) FOR CROSS REFERENCE OF RECOMMENDED LEADS SEE MOLEX WEB SITE.

| | | | | | | |
|--|---|-----------------------|--------------------------|---|----------------------|------------------------|
| QUALITY SYMBOLS: $\nabla=0$ $\nabla=0$ $\nabla=0$ | GENERAL TOLERANCES (UNLESS SPECIFIED) mm INCH $\pm .10$ | | DIMENSION STYLE IN/MM | SCALE 4:1 | DESIGN UNITS INCH | THIRD ANGLE PROJECTION |
| | DRAWN BY M MAYO | | DATE 98/10/06 | TITLE GANGED INVERTED MODJACK ASSEMBLY | | |
| | CHECKED BY J ROBERTS | | DATE 98/10/06 | APPROVED BY J ROBERTS | | |
| DRAFT WHERE APPLICABLE MUST REMAIN WITHIN DIMENSIONS | | ANGLE $\pm 1/2^\circ$ | MATERIAL NO. N/A | DOCUMENT NO. SD-44248-001 | SHEET NO. 5 OF 6 | molex |

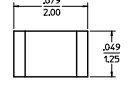
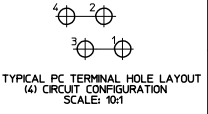
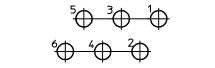
INCORPORATED AND SHOULD NOT BE USED WITHOUT WRITTEN PERMISSION



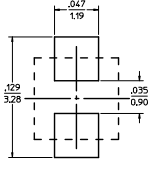
6 CIRCUIT PCB LAYOUT: COMPONENT SIDE
RECOMMENDED PCB THICKNESS: .062/1.57
TOLERANCE ±.003/.076 UNLESS OTHERWISE SPECIFIED



4 CIRCUIT PCB LAYOUT: COMPONENT SIDE
RECOMMENDED PCB THICKNESS: .062/1.57
TOLERANCE ±.003/.076 UNLESS OTHERWISE SPECIFIED



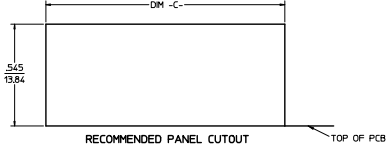
RECOMMENDED SMT LED DIMENSIONS
SCALE: NTS
(SEE NOTE 3)



RECOMMENDED SMT LED SOLDER PATTERN
SCALE: NTS

- NOTES:
- 1) DIMENSIONS MARKED "SEE NOTE #1" REFER TO ASSEMBLIES WITH SHIELDING OPTION INCLUDED
 - 2) DIMENSIONS MARKED "SEE NOTE #2" REFER TO ASSEMBLIES WITH THE LIGHT PIPE OPTION INCLUDED
 - 3) FOR CROSS REFERENCE OF RECOMMENDED LEDS SEE MOLEX WEB SITE.

| NUMBER OF PORTS | DIM -B- | DIM -C- |
|-----------------|-------------|-------------|
| 2 | 1,120/28,45 | 1,280/32,51 |
| 4 | 2,360/59,94 | 2,520/64,01 |



| | | | | | | |
|---|-----------------|--|-----------------|----------|---|--|
| SEE SHEET 1 REC. NO. 0442480074-0379 2013/05/09 CHIKO BELL APPROVED TEL: 0358033043 FAX: 0358033044 | QUALITY SYMBOLS | GENERAL TOLERANCES (UNLESS SPECIFIED) | DIMENSION STYLE | SCALE | DESIGN UNITS | THIRD ANGLE PROJECTION |
| | ▽=0 | 4 PLACES ±.010 | IN/MM | 4:1 | INCH | ☉ □ |
| | ▽=0 | 3 PLACES ±.025 | DRAWN BY | DATE | TITLE | GANGED INVERTED MODJACK ASSEMBLY DOCUMENT NO. SD-44248-001 SHEET NO. 6 OF 6 |
| | ▽=0 | 1 PLACE ±.050 | MMAYO | 98/10/06 | | |
| | 0 PLACE ±.100 | 2 PLACES ±.025 | CREATED BY | DATE | | |
| | | 1 PLACE ±.050 | APPROVED BY | DATE | | |
| | | 0 PLACE ±.100 | JROBERTS | 98/10/06 | | |
| | | ANGULAR ±1/2° | MATERIAL NO. | N/A | | |
| | | DRAFT WHERE APPLICABLE MUST REMAIN WITHIN DIMENSIONS | SIZE | D | THIS DRAWING CONTAINS INFORMATION THAT IS PROPRIETARY TO MOLEX INCORPORATED AND SHOULD NOT BE USED WITHOUT WRITTEN PERMISSION | |