

Excellent Integrated System Limited

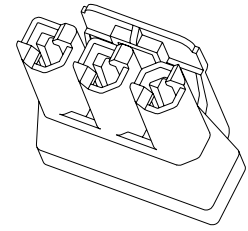
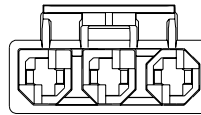
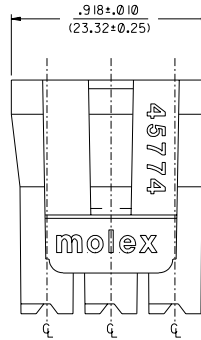
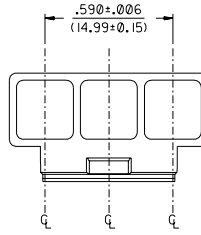
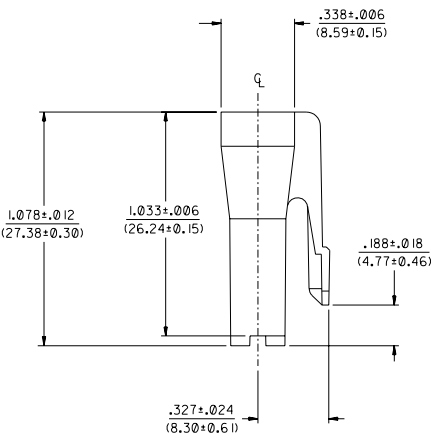
Stocking Distributor

Click to view price, real time Inventory, Delivery & Lifecycle Information:

[Molex Connector Corporation](#)
[0457740001](#)

For any questions, you can email us directly:

sales@integrated-circuit.com



NOTES:

- MATERIAL: NYLON 66; UL94V-0; IEC GWIT: 775C, GWF1: 960C
PART MEETS REQUIREMENTS OF WHIRLPOOL SPECIFICATION T-588
(HOT WIRE IGNITION TEST)
COLOR: BLACK
- FINISH: NONE
- PRODUCT SPECIFICATION: NONE
- UL LISTED AND CSA CERTIFIED
- THIS CONNECTOR HOUSING FOR USE WITH 43375-***** TERMINALS.
- SEE SDES-43335-9003 FOR REQUIREMENTS FOR MATING INTERFACE.

C	REVISE ENGRAVING UCP2005-0734 10-5-04 SCHAFFER
B	REVISE ENGRAVING UCP2005-0546 09-08-04 SCHAFFER
A	INITIAL RELEASE EC#UCP2004-1490 08-23-04 BW

MFG. SH.		REV.	LTR.	REVISIONS
= 0		= 0		REVISE ONLY ON CAD SYSTEM
DIMENSIONS SHOWN (METRIC) INCH UNLESS OTHERWISE SPECIFIED TOLERANCES: ANGULAR ± 1/2°				
3 PLACE	±	---	---	
2 PLACE	±	---	---	
1 PLACE	---	±	---	
DRAFT ANGLE DIMENSIONS MUST REMAIN WITHIN DIMENSIONS				
TITLE 3-CKT. RECEPTACLE HOUSING .125 X .020 FLAT BLADE TPA (GLOW WIRE CAPABLE)		SHEET NO. DATE 1 OF 1 08/23/04		
MOLEX INCORPORATED LITTLE ROCK, MISSOURI, U.S.A.		PART NO. DRWG. NO. 45774-0001 SD-45774-001		
DRWG. BY: BW CHK'D. BY: BW APP'D. BY: BW	SCALE: 3:1	FILE NAME: SD-45774-001	THIS DRAWING CONTAINS INFORMATION THAT IS PROPRIETARY TO MOLEX. NO LINE SHOULD NOT BE USED WITHOUT WRITTEN PERMISSION. CP	