

## Excellent Integrated System Limited

Stocking Distributor

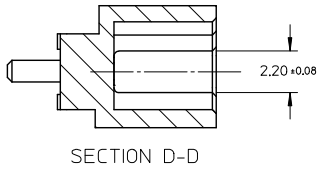
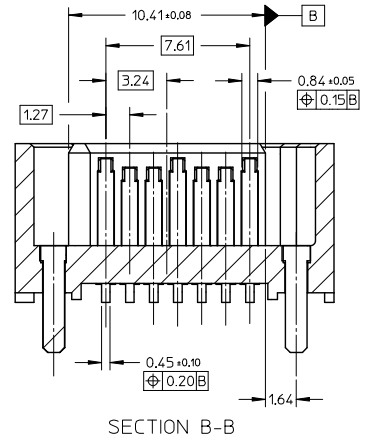
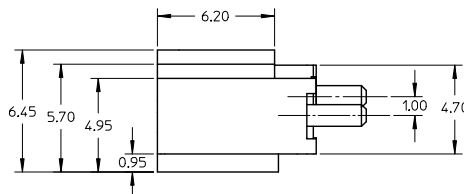
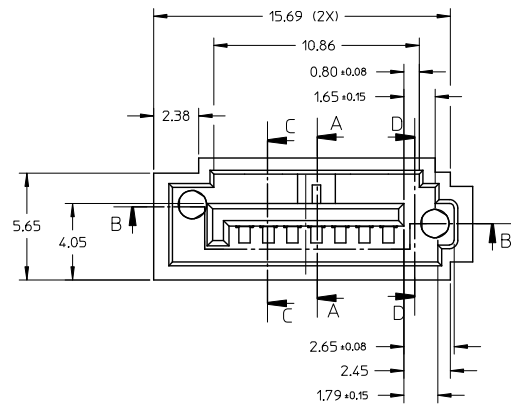
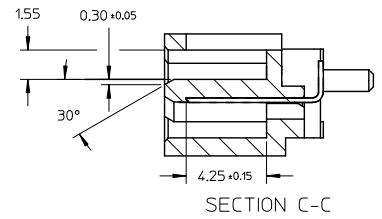
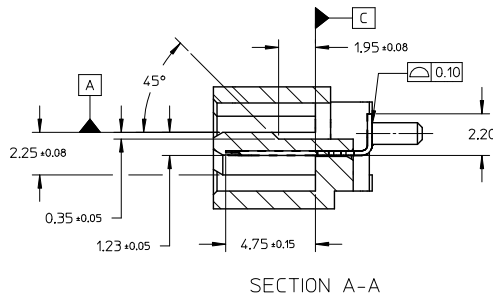
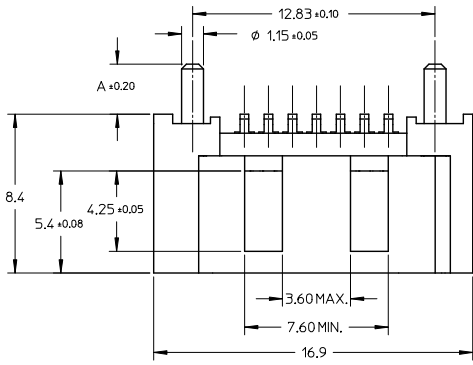
Click to view price, real time Inventory, Delivery & Lifecycle Information:

[Molex Connector Corporation](#)  
[0473062001](#)

For any questions, you can email us directly:

[sales@integrated-circuit.com](mailto:sales@integrated-circuit.com)

10 9 8 7 6 5 4 3 2 1



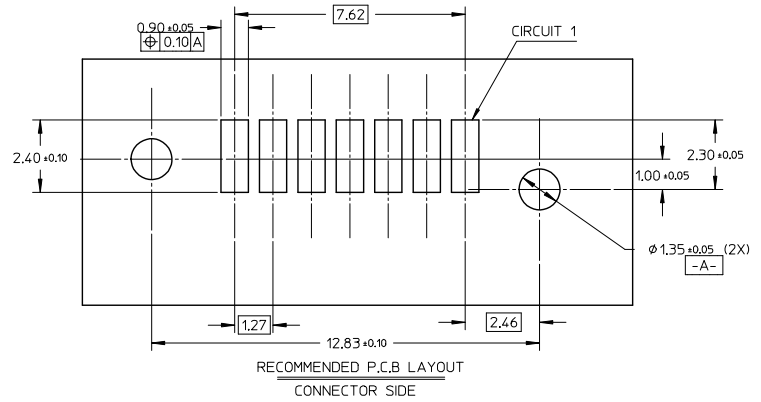
<b>ADD NEW PART</b> EC NO: SH2015-0307 T: DRW: GLLI CHKD: GLLI APPR: AYIN REV: 2014/10/30 2015/03/16	QUALITY SYMBOLS √=0 √=0 √=0	GENERAL TOLERANCES (UNLESS SPECIFIED)		DIMENSION STYLE MM ONLY		SCALE 5:1	DESIGN UNITS METRIC	THIRD ANGLE PROJECTION
		4 PLACES ± --- ± ---	mm INCH	DRAWN BY GLLI	DATE 2014/10/30	TITLE HIGH SPEED CONNECTOR 1.27MM PITCH VERTICAL SMT SOLDER TAIL		
		3 PLACES ± --- ± ---		CHECKED BY	DATE	MATERIAL NO.		
		2 PLACES ± 0.15 ± ---		APPROVED BY AYIN	DATE 2015/03/16	DOCUMENT NO. SD-47306-001	SHEET NO. 1 OF 2	
		1 PLACE ± 0.25 ± ---		SEE SHEET 2		THIS DRAWING CONTAINS INFORMATION THAT IS PROPRIETARY TO MOLEX INCORPORATED AND SHOULD NOT BE USED WITHOUT WRITTEN PERMISSION		
		0 PLACE ± --- ± ---		ANGULAR ± 3°				
		DRAFT WHERE APPLICABLE MUST REMAIN WITHIN DIMENSIONS		SIZE A3				

9 8 7 6 5 4 3 2 1

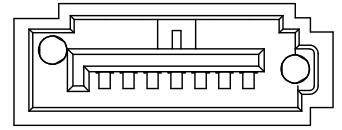
10 9 8 7 6 5 4 3 2 1

NOTES:

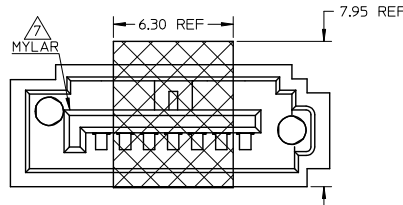
- MATERIAL:
  - HOUSING: HIGH TEMPERATURE THERMAL PLASTIC, GLASS FILLED, UL94V-0, COLOR: BLACK
  - TERMINAL: BRASS
  - POST: BRASS
- TERMINAL PLATING:
  - CONTACT AREA: (a) GOLD FLASH
  - (b) GOLD, THICKNESS=0.76 MICRON MINIMUM
  - (c) GOLD, THICKNESS=0.38 MICRON MINIMUM
  - SOLDER TAIL: TIN, THICKNESS=1.27 MICRON MINIMUM
  - UNDER PLATE: NICKEL, THICKNESS=1.27 MICRON MINIMUM
- POST PLATING: UNDER PLATE: NICKEL, THICKNESS=1.25 MICRON MINIMUM
- TIN, THICKNESS=1.9 MICRON MINIMUM OVER ALL
- PACKAGING: TAPE REEL
- PRODUCT SPECIFICATION REFER TO PS-67491-001
- RECOMMENDED SOLDERING PROCESS: IR PROCESS
- THE MYLAR STICKED ON THE HOUSING IS JUST USED FOR PICK-UP PLACE, PLEASE REMOVE IT AFTER REFLOW



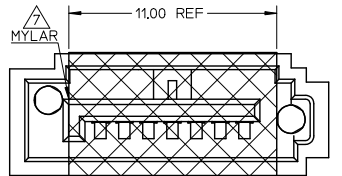
RECOMMENDED P.C.B LAYOUT CONNECTOR SIDE



WITHOUT MYLAR TYPE



WITH MYLAR TYPE (ONLY FOR 47306-5006 AND 47306-5026)



WITH MYLAR TYPE

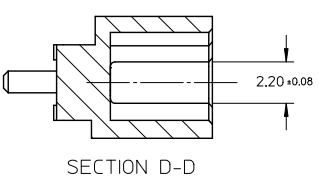
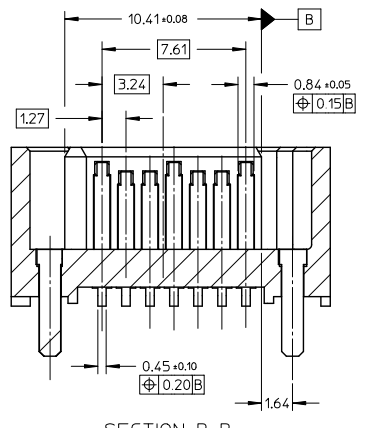
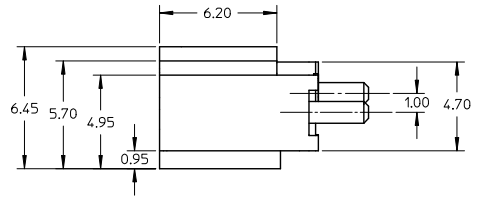
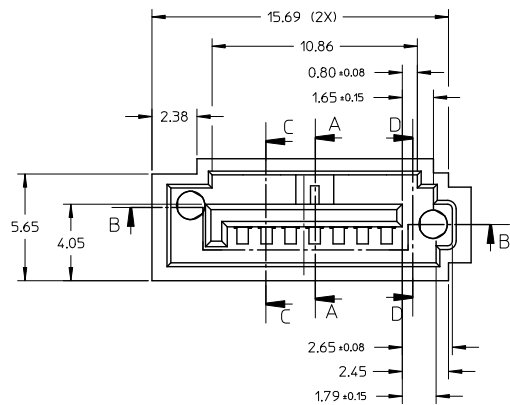
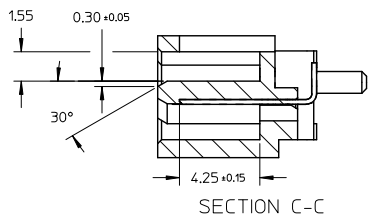
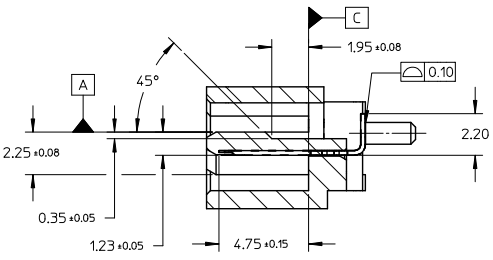
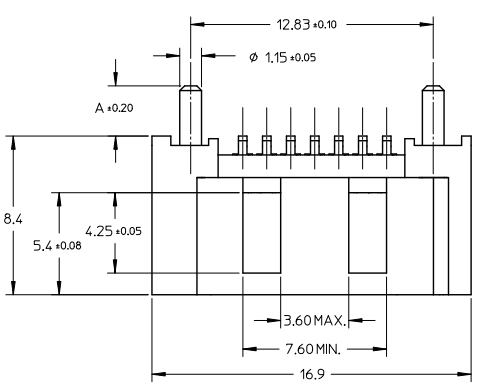
473065033	SEE NOTE2(b)	2.65	WITH	PK-47306-001	NATURAL
473065013	SEE NOTE2(b)	2.65	WITH	PK-47306-001	BLUE
473062105	SEE NOTE2(c)	2.65	WITHOUT	PK-47306-002	
473062102	SEE NOTE2(b)				
473062101	SEE NOTE2(a)	3.45	WITH	PK-47306-001	BLACK
473065026	SEE NOTE2(c)				
473065025	SEE NOTE2(c)	3.05	WITH	PK-47306-001	BLACK
473065022	SEE NOTE2(b)				
473065021	SEE NOTE2(a)	3.05	WITH	PK-47306-001	BLACK
473065015	SEE NOTE2(c)				
473065012	SEE NOTE2(b)	2.65	WITH	PK-47306-001	BLACK
473065011	SEE NOTE2(a)				
473065005	SEE NOTE2(c)	3.45	WITHOUT	PK-47306-001	BLACK
473065006	SEE NOTE2(c)				
473065002	SEE NOTE2(b)	3.05	WITHOUT	PK-47306-001	BLACK
473065001	SEE NOTE2(a)				
473062025	SEE NOTE2(c)	2.65	WITHOUT	PK-47306-001	BLACK
473062022	SEE NOTE2(b)				
473062021	SEE NOTE2(a)	2.65	WITHOUT	PK-47306-001	BLACK
473062015	SEE NOTE2(c)				
473062012	SEE NOTE2(b)	2.65	WITHOUT	PK-47306-001	BLACK
473062011	SEE NOTE2(a)				
473062005	SEE NOTE2(c)	2.65	WITHOUT	PK-47306-001	BLACK
473062002	SEE NOTE2(b)				
473062001	SEE NOTE2(a)	2.65	WITHOUT	PK-47306-001	BLACK

SEE SHEET 1 EC NO: SH2015-0307 TDRWINGLLI 2014/10/30 CHKD: APPR: AYIN 2015/03/16	QUALITY SYMBOLS √=0 √=0 √=0	GENERAL TOLERANCES (UNLESS SPECIFIED) mm INCH 4 PLACES ± --- ± --- 3 PLACES ± --- ± --- 2 PLACES ± 0.15 ± --- 1 PLACE ± 0.25 ± --- 0 PLACE ± --- ± --- ANGULAR ± 3 ° DRAFT WHERE APPLICABLE MUST REMAIN WITHIN DIMENSIONS	DIMENSION STYLE MM ONLY DRAWN BY DATE GLLI 2014/10/30 CHECKED BY DATE APPROVED BY DATE AYIN 2015/03/16	SCALE 8:1 DESIGN UNITS METRIC THIRD ANGLE PROJECTION	TITLE HIGH SPEED CONNECTOR 1.27MM PITCH VERTICAL SMT SOLDER TAIL	MATERIAL NO. SEE CHART	DOCUMENT NO. SD-47306-001	SHEET NO. 2 OF 2

ib\_frame\_A3\_P\_AM\_T Rev. G 2012/01/11

9 8 7 6 5 4 3 2 1

10 9 8 7 6 5 4 3 2 1



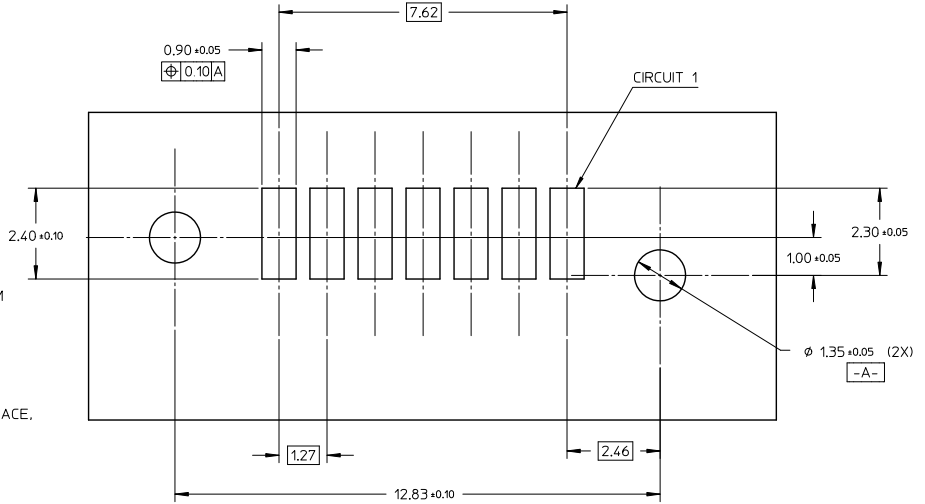
<b>ADD PART NUMBER</b> EC NO. SH2010-0232 DRAWN BY: DRWANXJ SONG CHECKED BY: CHYKDXJ SONG APPROVED BY: APPR:RZFHANG 2010/01/07 2010/01/11 2010/07/14	QUALITY SYMBOLS ▽=0 ▽=0	GENERAL TOLERANCES (UNLESS SPECIFIED) mm INCH 4 PLACES ± --- ± --- 3 PLACES ± --- ± --- 2 PLACES ± 0.15 ± --- 1 PLACE ± 0.25 ± --- ANGULAR ± 1 °	DIMENSION STYLE MM ONLY	SCALE 5:1	DESIGN UNITS METRIC	THIRD ANGLE PROJECTION	
	DRAWN BY: JENNY DATE: 2005/07/22	CHECKED BY: GRMA DATE: 2005/07/22	APPROVED BY: YAP DATE: 2005/07/22	MATERIAL NO. SEE SHEET 2	DOCUMENT NO. SD-47306-001	SHEET NO. 1 OF 2	TITLE HIGH SPEED CONNECTOR 1.27MM PITCH VERTICAL SMT SOLDER TAIL MOLEX INCORPORATED
	DRAFT WHERE APPLICABLE MUST REMAIN WITHIN DIMENSIONS						
	THIS DRAWING CONTAINS INFORMATION THAT IS PROPRIETARY TO MOLEX INCORPORATED AND SHOULD NOT BE USED WITHOUT WRITTEN PERMISSION						
	SIZE: A3						

9 8 7 6 5 4 3 2 1

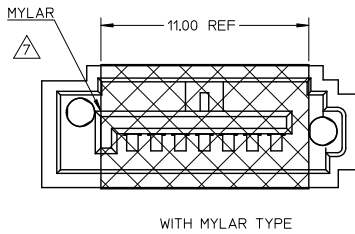
10 9 8 7 6 5 4 3 2 1

NOTES:

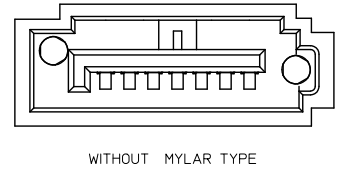
1. MATERIAL:
  - HOUSING: HIGH TEMPERATURE THERMAL PLASTIC, GLASS FILLED, UL94V-0, COLOR: BLACK
  - TERMINAL: BRASS
  - POST: BRASS
2. TERMINAL PLATING:
  - CONTACT AREA: (a) GOLD FLASH
  - (b) GOLD, THICKNESS=0.76 MICRON MINIMUM
  - (c) GOLD, THICKNESS=0.38 MICRON MINIMUM
  - SOLDER TAIL: TIN, THICKNESS=1.27 MICRON MINIMUM
  - UNDER PLATE: NICKEL, THICKNESS=1.27 MICRON MINIMUM
3. POST PLATING: UNDER PLATE: NICKEL, THICKNESS=1.25 MICRON MINIMUM
- TIN, THICKNESS=1.9 MICRON MINIMUM OVER ALL
4. PACKAGING: TAPE REEL
5. PRODUCT SPECIFICATION REFER TO PS-67491-001
6. RECOMMENDED SOLDERING PROCESS: IR PROCESS
7. THE MYLAR STICKED ON THE HOUSING IS JUST USED FOR PICK-UP PLACE, PLEASE REMOVE IT AFTER REFLOW



473062105	SEE NOTE2(c)	2.65	WITHOUT	PK-47306-002
473062102	SEE NOTE2(b)			
473062101	SEE NOTE2(a)			
473065025	SEE NOTE2(c)	3.45	WITH	PK-47306-001
473065022	SEE NOTE2(b)			
473065021	SEE NOTE2(a)			
473065015	SEE NOTE2(c)	3.05		
473065012	SEE NOTE2(b)			
473065011	SEE NOTE2(a)			
473065015	SEE NOTE2(c)	2.65	WITHOUT	PK-47306-001
473065005	SEE NOTE2(b)			
473065002	SEE NOTE2(a)			
473065001	SEE NOTE2(c)	3.45		
473062025	SEE NOTE2(b)			
473062022	SEE NOTE2(a)			
473062015	SEE NOTE2(c)	3.05	WITHOUT	PK-47306-001
473062012	SEE NOTE2(b)			
473062011	SEE NOTE2(a)			
473062005	SEE NOTE2(c)	2.65		
473062002	SEE NOTE2(b)			
473062001	SEE NOTE2(a)			
MATERIAL NO	PLATING TYPE	DIM A	MYLAR	PACKING



RECOMMENDED P.C.B LAYOUT  
CONNECTOR SIDE



SEE SHEET 1 EC NO: SH2010-022 FIDRINXI SONG 2010/07/07 CHIKDXI SONG 2010/07/11 APPR:RZTHANG 2010/07/14 REV DESCRIPTION	QUALITY SYMBOLS	GENERAL TOLERANCES (UNLESS SPECIFIED)	DIMENSION STYLE	SCALE	DESIGN UNITS	THIRD ANGLE PROJECTION
	$\nabla=0$ $\nabla=0$	mm INCH 4 PLACES ± --- ± --- 3 PLACES ± --- ± --- 2 PLACES ± 0.15 ± --- 1 PLACE ± 0.25 ± --- ANGULAR ± 1 °	MM ONLY	5:1	METRIC	DRAWN BY DATE JENNY 2005/07/22 CHECKED BY DATE GRMA 2005/07/22 APPROVED BY DATE YAP 2005/07/22
		DRAFT WHERE APPLICABLE MUST REMAIN WITHIN DIMENSIONS				TITLE HIGH SPEED CONNECTOR 1.27MM PITCH VERTICAL SMT SOLDER TAIL MOLEX INCORPORATED
						MATERIAL NO. SEE TABLE DOCUMENT NO. SD-47306-001 SHEET NO. 2 OF 2

ib\_frame\_A3\_P\_AM\_T 9 8 7 6 5 4 3 2 1  
Rev. F 2006/09/16