

## Excellent Integrated System Limited

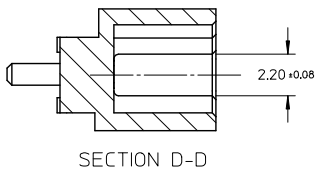
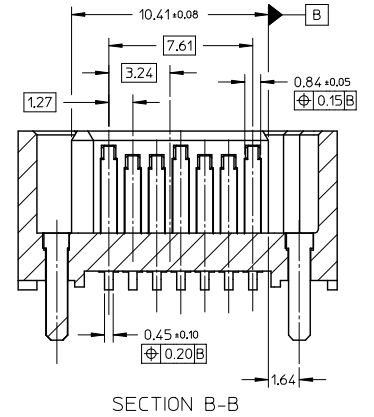
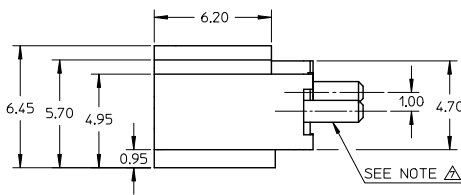
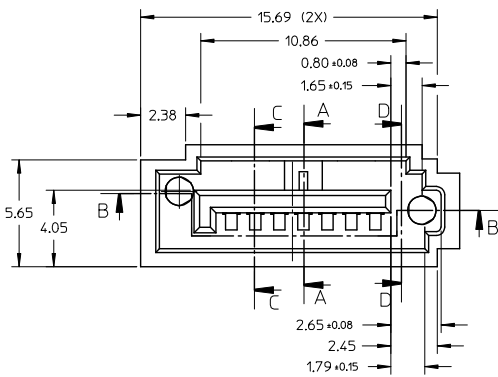
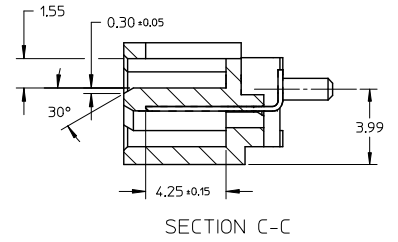
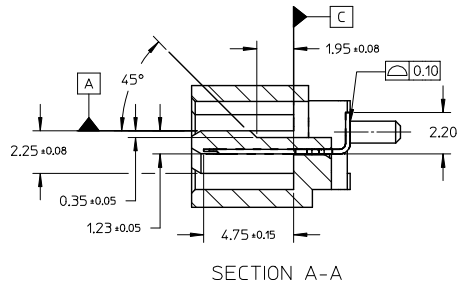
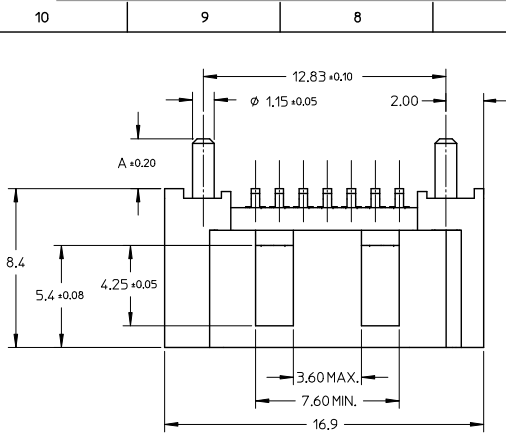
Stocking Distributor

Click to view price, real time Inventory, Delivery & Lifecycle Information:

[Molex Connector Corporation](#)  
[0678005015](#)

For any questions, you can email us directly:

[sales@integrated-circuit.com](mailto:sales@integrated-circuit.com)



ADD PARTS EC NO: SH2014-0204 DRAWN BY: GRATE MA CHKD: YAJUN APPR: YAJUN REV: G	DESCRIPTION 2013/11/20 2014/01/20	QUALITY SYMBOLS	GENERAL TOLERANCES (UNLESS SPECIFIED)		DIMENSION STYLE MM ONLY		SCALE 5:1	DESIGN UNITS METRIC	THIRD ANGLE PROJECTION																																																
		<table border="1"> <tr> <th></th> <th>mm</th> <th>INCH</th> </tr> <tr> <td>4 PLACES</td> <td>± ---</td> <td>± ---</td> </tr> <tr> <td>3 PLACES</td> <td>± ---</td> <td>± ---</td> </tr> <tr> <td>2 PLACES</td> <td>± 0.15</td> <td>± ---</td> </tr> <tr> <td>1 PLACE</td> <td>± 0.25</td> <td>± ---</td> </tr> <tr> <td>0 PLACE</td> <td>±</td> <td>±</td> </tr> </table>		mm	INCH	4 PLACES	± ---	± ---	3 PLACES	± ---	± ---	2 PLACES	± 0.15	± ---	1 PLACE	± 0.25	± ---	0 PLACE	±	±	<table border="1"> <tr> <th>mm</th> <th>INCH</th> </tr> <tr> <td>± 0.10</td> <td>± 0.004</td> </tr> <tr> <td>± 0.15</td> <td>± 0.006</td> </tr> <tr> <td>± 0.25</td> <td>± 0.010</td> </tr> <tr> <td>± 0.50</td> <td>± 0.020</td> </tr> <tr> <td>± 1.00</td> <td>± 0.040</td> </tr> <tr> <td>± 1.50</td> <td>± 0.060</td> </tr> <tr> <td>± 2.00</td> <td>± 0.080</td> </tr> <tr> <td>± 3.00</td> <td>± 0.120</td> </tr> <tr> <td>± 4.00</td> <td>± 0.160</td> </tr> <tr> <td>± 5.00</td> <td>± 0.200</td> </tr> <tr> <td>± 6.00</td> <td>± 0.240</td> </tr> <tr> <td>± 8.00</td> <td>± 0.320</td> </tr> <tr> <td>± 10.00</td> <td>± 0.400</td> </tr> <tr> <td>± 15.00</td> <td>± 0.600</td> </tr> <tr> <td>± 20.00</td> <td>± 0.800</td> </tr> </table>		mm	INCH	± 0.10	± 0.004	± 0.15	± 0.006	± 0.25	± 0.010	± 0.50	± 0.020	± 1.00	± 0.040	± 1.50	± 0.060	± 2.00	± 0.080	± 3.00	± 0.120	± 4.00	± 0.160	± 5.00	± 0.200	± 6.00	± 0.240	± 8.00	± 0.320	± 10.00	± 0.400	± 15.00	± 0.600	± 20.00	± 0.800	DRAWN BY GRATE MA	DATE 2004/02/02	TITLE HIGH SPEED CONNECTOR 1.27MM PITCH VERTICAL SMT SOLDER TAIL
	mm	INCH																																																							
4 PLACES	± ---	± ---																																																							
3 PLACES	± ---	± ---																																																							
2 PLACES	± 0.15	± ---																																																							
1 PLACE	± 0.25	± ---																																																							
0 PLACE	±	±																																																							
mm	INCH																																																								
± 0.10	± 0.004																																																								
± 0.15	± 0.006																																																								
± 0.25	± 0.010																																																								
± 0.50	± 0.020																																																								
± 1.00	± 0.040																																																								
± 1.50	± 0.060																																																								
± 2.00	± 0.080																																																								
± 3.00	± 0.120																																																								
± 4.00	± 0.160																																																								
± 5.00	± 0.200																																																								
± 6.00	± 0.240																																																								
± 8.00	± 0.320																																																								
± 10.00	± 0.400																																																								
± 15.00	± 0.600																																																								
± 20.00	± 0.800																																																								
DRAFT WHERE APPLICABLE MUST REMAIN WITHIN DIMENSIONS		MATERIAL NO. SEE CHART IN SHEET 2		DOCUMENT NO. SD-67800-005		SHEET NO. 1 OF 2																																																			
THIS DRAWING CONTAINS INFORMATION THAT IS PROPRIETARY TO MOLEX INCORPORATED AND SHOULD NOT BE USED WITHOUT WRITTEN PERMISSION																																																									

10 9 8 7 6 5 4 3 2 1

NOTES:

1. MATERIAL:

HOUSING: HIGH TEMPERATURE THERMAL PLASTIC, GLASS FILLED,  
UL94V-0, COLOR: REFER TO CHART.

TERMINAL: BRASS

POST: BRASS

2. TERMINAL PLATING:

CONTACT AREA: (a) GOLD FLASH

(b) GOLD, THICKNESS=0.76 MICRON MINIMUM

(c) GOLD, THICKNESS=0.38 MICRON MINIMUM

SOLDER TAIL: TIN, THICKNESS=1.27 MICRON MINIMUM

UNDER PLATE: NICKEL PLATED, THICKNESS=1.27 MICRON MINIMUM

3. POST PLATING: UNDER PLATE: NICKEL, THICKNESS=1.25 MICRON MINIMUM

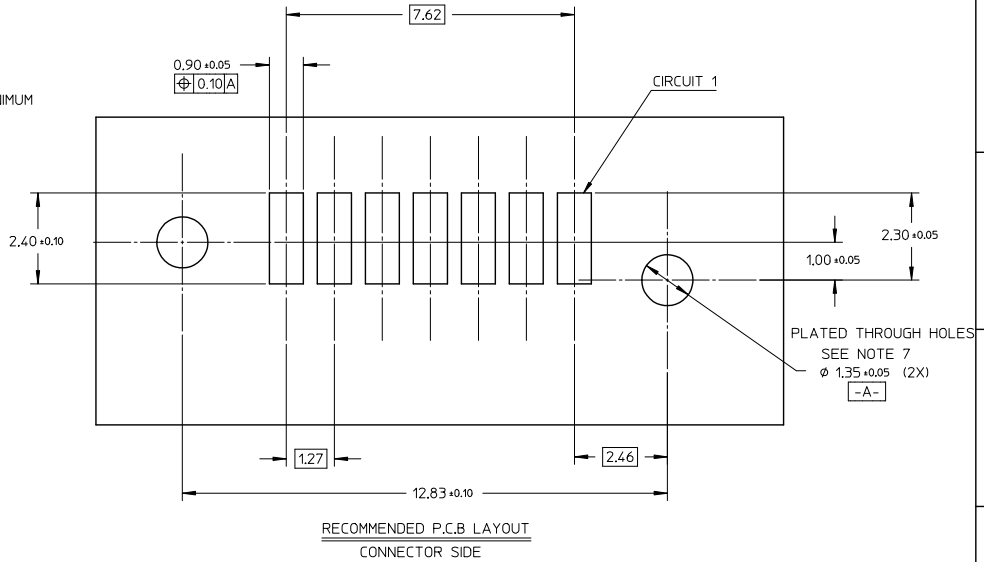
TIN, THICKNESS=19 MICRON MINIMUM OVER ALL

4. PACKAGING: PK-67800-001

5. PRODUCT SPECIFICATION REFER TO PS-67491-001

6. RECOMMENDED SOLDERING PROCESS: IR PROCESS

▲ METAL POSTS TO BE SOLDERED TO PCB



678005025	SEE NOTE2(c)	BLACK	3.45	PURE TIN
678005022	SEE NOTE2(b)			
678005021	SEE NOTE2(a)			
678005015	SEE NOTE2(c)	BLACK	3.05	
678005012	SEE NOTE2(b)			
678005011	SEE NOTE2(a)			
678005005	SEE NOTE2(c)	BLACK	2.65	
678005004	SEE NOTE2(c)	YELLOW		
678005003	SEE NOTE2(c)	BLUE		
678005013	SEE NOTE2(b)	WHITE(NATURE)		
678005033	SEE NOTE2(b)	WHITE(NATURE)		
678005002	SEE NOTE2(b)			
678005001	SEE NOTE2(a)	BLACK		
MATERIAL NO	PLATING TYPE	HOUSING COLOR	DIM A	REMARK

SEE SHEET 1 EC NO: SH2014-0204 DRAWING: 2013/11/20 CHKD: G APPR: ATIN 2014/01/20	QUALITY SYMBOLS	GENERAL TOLERANCES (UNLESS SPECIFIED)	DIMENSION STYLE	SCALE	DESIGN UNITS	THIRD ANGLE PROJECTION	
	$\nabla=0$ $\nabla=0$ $\nabla=0$	mm INCH 4 PLACES ± --- ± --- 3 PLACES ± --- ± --- 2 PLACES ± 0.15 ± --- 1 PLACE ± 0.25 ± --- 0 PLACE ± ±	MM ONLY	5:1	METRIC	DRAWN BY DATE GRATE MA 2004/02/02 CHECKED BY DATE YAJUN 2004/02/02 APPROVED BY DATE SAM 2004/02/02	TITLE HIGH SPEED CONNECTOR 1.27MM PITCH VERTICAL SMT SOLDER TAIL
	ANGULAR ± 1 ° DRAFT WHERE APPLICABLE MUST REMAIN WITHIN DIMENSIONS	MATERIAL NO. SEE CHART SIZE A 3	DOCUMENT NO. SD-67800-005	SHEET NO. 2 OF 2			
	THIS DRAWING CONTAINS INFORMATION THAT IS PROPRIETARY TO MOLEX INCORPORATED AND SHOULD NOT BE USED WITHOUT WRITTEN PERMISSION						

ib\_frame\_A3\_P\_AM\_T Rev. G 2012/01/11