

## Excellent Integrated System Limited

Stocking Distributor

Click to view price, real time Inventory, Delivery & Lifecycle Information:

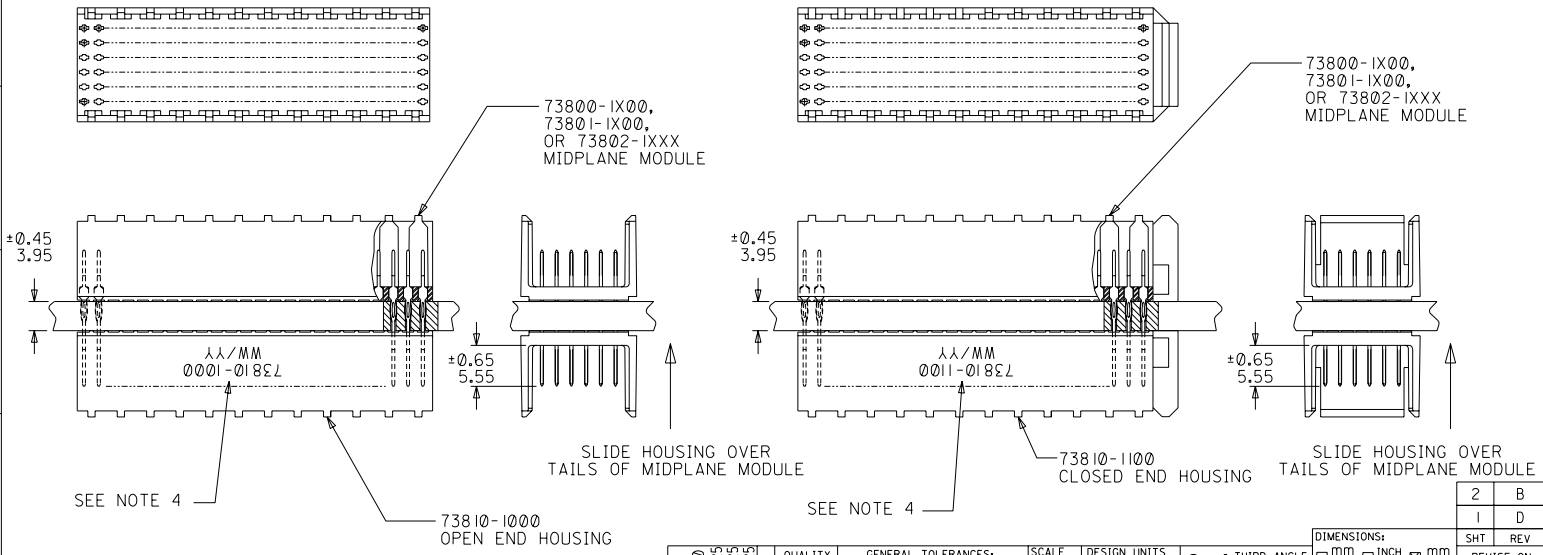
[Molex Connector Corporation](#)  
[0738101210](#)

For any questions, you can email us directly:

[sales@integrated-circuit.com](mailto:sales@integrated-circuit.com)

**NOTES:**

1. HOUSING MATERIALS: LIQUID CRYSTAL POLYMER (LCP), GLASS-FILLED, UL94V-0, COLOR: BLACK.
2. THIS PART CONFORMS TO MOLEX PRODUCT SPECIFICATION PS-73670-9999.
3. SEE DRAWINGS SD-73800-001, SD-73801-001, AND SD-73802-001 FOR DIMENSIONAL INFORMATION.
4. PARTS MARKED WITH PART NUMBER AND DATE CODE, ON EITHER SIDE, APPROXIMATELY WHERE SHOWN.
5. PARTS PACKAGED PER PK-70873-0818.



REVISED EC NO: LUCP2003-2260 DPN: THOMAS 03/0425 CHK: BINGHAM 03/0425 APPR: REED 03/0425 D	QUALITY SYMBOLS MAJOR $\nabla$ = 0 CRITICAL $\nabla$ / C = 0	GENERAL TOLERANCES: (UNLESS SPECIFIED) mm      INCH		SCALE 2 : 1	DESIGN UNITS <input checked="" type="checkbox"/> mm <input type="checkbox"/> INCH	THIRD ANGLE PROJECTION	DIMENSIONS: <input type="checkbox"/> mm <input type="checkbox"/> INCH <input checked="" type="checkbox"/> mm ONLY		SHEET NO. 2 OF 2 REV I D	
		4 PLACES ±0.      ±.		DRAWN BY & DATE JBINGHAM 97/06/19		TITLE: SALES ASSEMBLY, HDM DOUBLE-END MIDPLANE, 144 POS. SLIDE-ON HOUSING				REVISE ON CAD ONLY
		3 PLACES ±0.      ±.		CHECKED BY & DATE SREED 97/06/19		MOLEX INCORPORATED				SHEET NO. 1 OF 2
		2 PLACES ±0.05      ±.		APPROVED BY & DATE CBIXLER 97/06/19		CAD FILENAME S73810X1.DGN		MATERIAL NO. SEE CHART		DRAWING NO. SD-73810-001
1 PLACE ±0.10      ±.		ANGULAR: ± 1/2°		THIS DRAWING CONTAINS INFORMATION THAT IS PROPRIETARY TO MOLEX INCORPORATED AND SHOULD NOT BE USED WITHOUT WRITTEN PERMISSION.						SIZE B
DRAFT WHERE APPLICABLE MUST REMAIN WITHIN DIMENSIONS										

10 9 8 7 6 5 4 3 2 73810

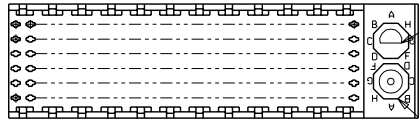
**MATERIAL NUMBER ASSIGNMENT**

73810- \* \* \* \*

1 = 144-CIRCUIT

0 = OPEN END VERSION  
1 = CLOSED END VERSION  
2 = POLAR/GUIDE VERSION

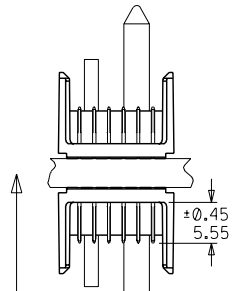
73800-1X00,  
73801-1X00,  
OR 73802-1XXX  
MIDPLANE MODULE



LOCATION B

LOCATION A

NUMBER	GUIDE POST LOCATION	POLAR KEY POSITION
00	N/A	N/A
01	B	A
02	A	B
03	B	C
04	A	D
05	B	E
06	A	F
07	B	G
08	A	H
09	B	N/A
10	A	
11	B	
12	A	
13	B	
14	A	
15	B	
16	A	
17	B	
18	A	



SLIDE HOUSING OVER  
TAILS OF  
MIDPLANE MODULE

±0.65  
3.95

SEE NOTE 5

73810-12XX  
POLAR/GUIDE HOUSING

SEE SHEET 1 EC NO. UDT-2000-0443 DRAWN BY BINGHAM 99/11/04 CHK. SREED 99/11/04 APPR. CBIXLER 99/11/04	QUALITY SYMBOLS MAJOR = 0 CRITICAL = 0 C = 0	GENERAL TOLERANCES: (UNLESS SPECIFIED)	SCALE 2 : 1	DESIGN UNITS <input checked="" type="checkbox"/> mm <input type="checkbox"/> INCH	THIRD ANGLE PROJECTION <input type="checkbox"/> mm <input type="checkbox"/> INCH <input checked="" type="checkbox"/> mm ONLY	SHT REV
		4 PLACES ±0.1 ±. 3 PLACES ±0.1 ±. 2 PLACES ±0.05 ±. 1 PLACE ±0.10 ±.	DRAWN BY & DATE BINGHAM 97/06/19 CHECKED BY & DATE SREED 97/06/19 APPROVED BY & DATE CBIXLER 97/06/19	TITLE: SALES ASSEMBLY, HDM DOUBLE-END MIDPLANE, 144 POS. SLIDE-ON HOUSING		MATERIAL NO. S73810X2.DGN
ANGLUAR: ± 1/2		CAD FILENAME		MOLEX INCORPORATED		SIZE B
DRAFT WHERE APPLICABLE MUST REMAIN WITHIN DIMENSIONS		THIS DRAWING CONTAINS INFORMATION THAT IS PROPRIETARY TO MOLEX INCORPORATED AND SHOULD NOT BE USED WITHOUT WRITTEN PERMISSION.				

9 8 7 6 5 4 3 2 1