

Excellent Integrated System Limited

Stocking Distributor

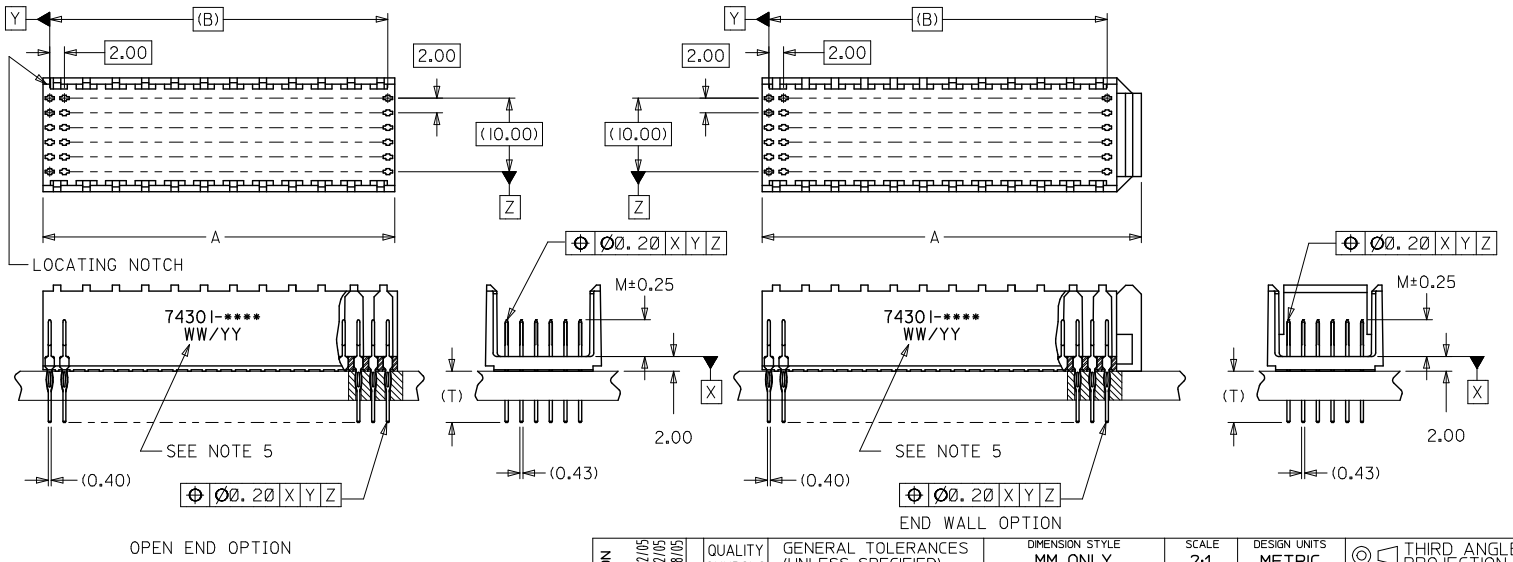
Click to view price, real time Inventory, Delivery & Lifecycle Information:

[Molex Connector Corporation](#)
[0743010100](#)

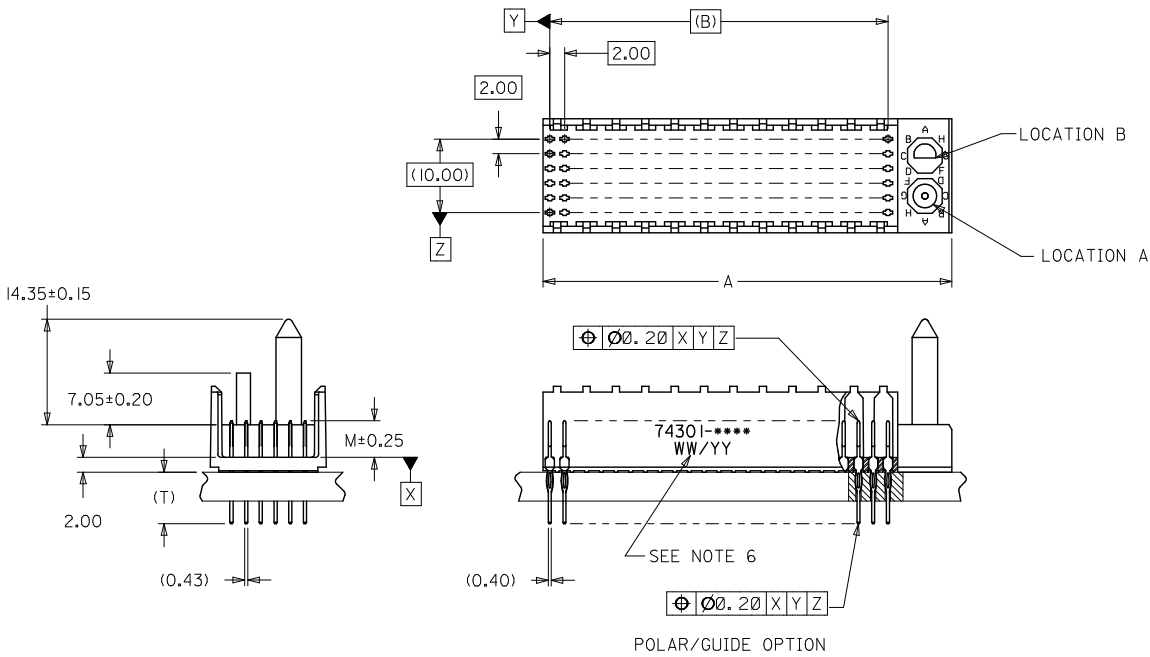
For any questions, you can email us directly:

sales@integrated-circuit.com

- NOTES:
1. MATERIALS: HOUSING - LIQUID CRYSTAL POLYMER (LCP)
GLASS-FILLED, UL 94V-0. COLOR: BLACK.
CONTACT - PHOSPHOR BRONZE.
 2. FINISH: SELECTIVE GOLD (Au) IN CONTACT AREA, 0.76 MICROMETERS MINIMUM THICKNESS,
SELECTIVE MATTE TIN (Sn) ON IN TAIL AREA.
NICKEL (Ni) OVERALL.
 3. THIS PART CONFORMS TO MOLEX PRODUCT SPECIFICATION PS-73670-9999.
 4. PACKAGE PER 70873-0868.
 5. PARTS MARKED WITH PART NUMBER AND DATE CODE ON EITHER SIDE,
APPROXIMATELY WHERE SHOWN.



| | | | | | | | | | |
|--|--------------------------------------|--|------|--|--------------------|---|------------------------|---------------------------|--|
| LEAD FREE CONVERSION EC NO: LCP/2013-3253 DRAWN BY: RWHPPL 2013/02/05 CHKD BY: WOLFE 2013/02/05 APPR: SMILLER 2013/08/05 | QUALITY SYMBOLS ▽=0 ▽=0 ▽=0 | GENERAL TOLERANCES (UNLESS SPECIFIED) | | DIMENSION STYLE MM ONLY | | SCALE 2:1 | DESIGN UNITS METRIC | THIRD ANGLE PROJECTION | |
| | | 4 PLACES ±--- | ±--- | DRAWN BY RWHPPL | DATE 2013/02/05 | TITLE SALES ASSEMBLY, HDM BACKPLANE CONNECTOR, EXTENDED TAIL VERSION molex DOCUMENT NO. SD-74301-001 | | | |
| | | 3 PLACES ±--- | ±--- | CHECKED BY SREED | DATE 99/01/21 | | | | |
| | | 2 PLACES ±0.05 | ±--- | APPROVED BY SMILLER | DATE 2013/08/05 | MATERIAL NO. SEE CHART | SHEET NO. 1 OF 3 | | |
| 1 PLACE ±0.10 | ±--- | ANGULAR ±1/2° DRAFT WHERE APPLICABLE MUST REMAIN WITHIN DIMENSIONS | | THIS DRAWING CONTAINS INFORMATION THAT IS PROPRIETARY TO MOLEX INCORPORATED AND SHOULD NOT BE USED WITHOUT WRITTEN PERMISSION | | | | | |
| 0 PLACE ±--- | ±--- | | | | | | | | |



| | | | | | | | | |
|---|---|---------------------------------------|--------|----------------------------|--|--------------------|---|------------------------|
| SEE SHEET 1 EC NO: UCP2013-3253 DRAWN BY: RWHPPL 2013/02/05 CHKD BY: CHKMOLLE 2013/02/05 APPR: SMILLER 2013/08/05 | QUALITY SYMBOLS $\nabla=0$ $\nabla=0$ $\nabla=0$ | GENERAL TOLERANCES (UNLESS SPECIFIED) | | DIMENSION STYLE MM ONLY | | SCALE 2:1 | DESIGN UNITS METRIC | THIRD ANGLE PROJECTION |
| | | | mm | INCH | DRAWN BY RWHPPL | DATE 2013/02/05 | TITLE SALES ASSEMBLY, HDM BACKPLANE CONNECTOR, EXTENDED TAIL VERSION | |
| | | 4 PLACES | ± --- | ± --- | CHECKED BY SREED | DATE 99/01/21 | | |
| | | 3 PLACES | ± --- | ± --- | APPROVED BY SMILLER | DATE 2013/08/05 | | |
| | | 2 PLACES | ± 0.05 | ± --- | MATERIAL NO. SEE CHART | | DOCUMENT NO. SD-74301-001 | SHEET NO. 2 OF 3 |
| | | 1 PLACE | ± 0.10 | ± --- | THIS DRAWING CONTAINS INFORMATION THAT IS PROPRIETARY TO MOLEX INCORPORATED AND SHOULD NOT BE USED WITHOUT WRITTEN PERMISSION | | | |
| | | 0 PLACE | ± --- | ± --- | | | | |

MATERIAL NUMBER ASSIGNMENT

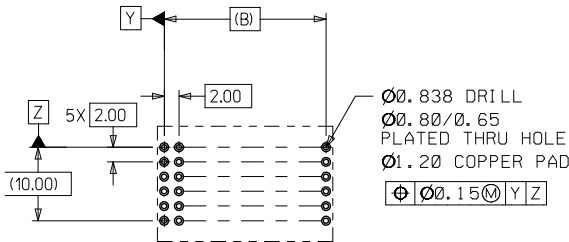
0 = 72-CIRCUIT OPEN END
 1 = 144-CIRCUIT OPEN END
 2 = 72-CIRCUIT END WALL
 3 = 144-CIRCUIT END WALL
 4 = 72-CIRCUIT POLAR/GUIDE
 5 = 144-CIRCUIT POLAR/GUIDE

0 = 5.0mm MATING, 7.0mm TAIL
 1 = 5.5mm MATING, 7.0mm TAIL
 2 = 6.0mm MATING, 7.0mm TAIL

74301- * * * *

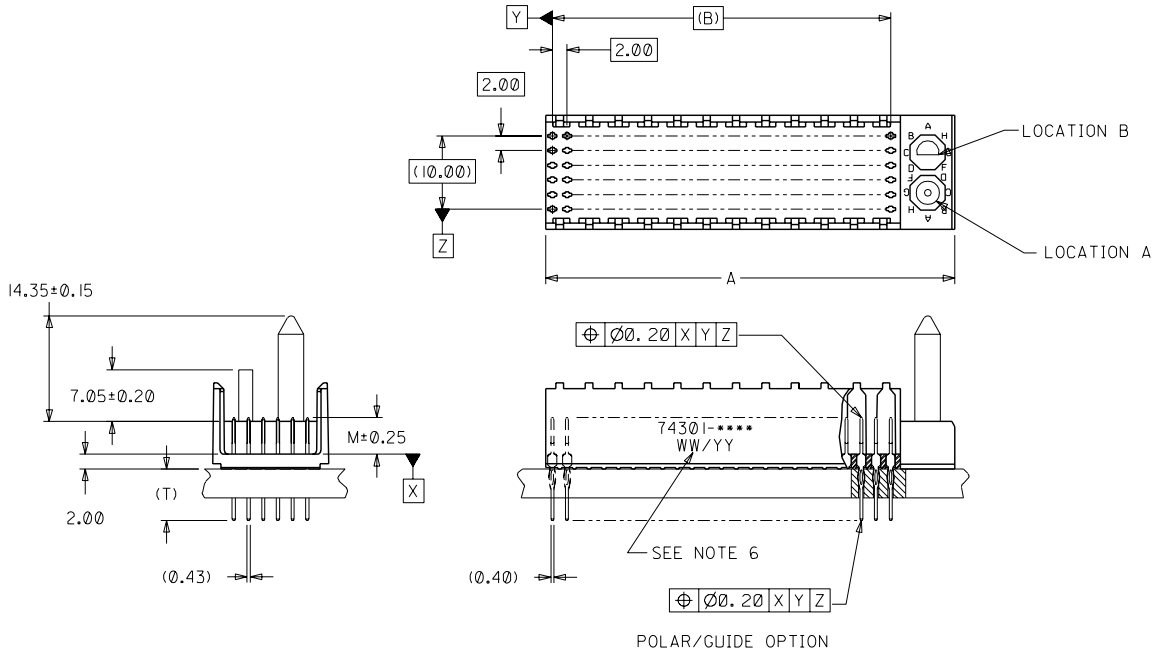
| NUMBER | GUIDE POST LOCATION | POLAR KEY POSITION |
|--------|---------------------|--------------------|
| 00 | N/A | N/A |
| 01 | B | A |
| 02 | A | |
| 03 | B | B |
| 04 | A | |
| 05 | B | C |
| 06 | A | |
| 07 | B | D |
| 08 | A | |
| 09 | B | E |
| 10 | A | |
| 11 | B | F |
| 12 | A | |
| 13 | B | G |
| 14 | A | |
| 15 | B | H |
| 16 | A | |
| 17 | B | |
| 18 | A | N/A |

| PART NUMBER | DIM A | DIM B | DIM M | DIM T |
|-------------|-------|-------|-------|-------|
| 74301-0000 | 23.8 | 22.00 | 5.00 | 7.00 |
| 74301-0100 | 23.8 | 22.00 | 5.50 | 7.00 |
| 74301-0200 | 23.8 | 22.00 | 6.00 | 7.00 |
| 74301-1000 | 47.8 | 46.00 | 5.00 | 7.00 |
| 74301-1100 | 47.8 | 46.00 | 5.50 | 7.00 |
| 74301-1200 | 47.8 | 46.00 | 6.00 | 7.00 |
| 74301-2000 | 27.6 | 22.00 | 5.00 | 7.00 |
| 74301-2100 | 27.6 | 22.00 | 5.50 | 7.00 |
| 74301-2200 | 27.6 | 22.00 | 6.00 | 7.00 |
| 74301-3000 | 51.6 | 46.00 | 5.00 | 7.00 |
| 74301-3100 | 51.6 | 46.00 | 5.50 | 7.00 |
| 74301-3200 | 51.6 | 46.00 | 6.00 | 7.00 |
| 74301-40** | 31.6 | 22.00 | 5.00 | 7.00 |
| 74301-41** | 31.6 | 22.00 | 5.50 | 7.00 |
| 74301-42** | 31.6 | 22.00 | 6.00 | 7.00 |
| 74301-50** | 55.6 | 46.00 | 5.00 | 7.00 |
| 74301-51** | 55.6 | 46.00 | 5.50 | 7.00 |
| 74301-52** | 55.6 | 46.00 | 6.00 | 7.00 |



PCB LAYOUT: COMPONENT SIDE
 RECOMMENDED PCB THICKNESS: 2.50 MIN.

| | | | | | | |
|---|--------------------------------------|---|--|-------------------------------------|--|---------------------------|
| SEE SHEET 1 EC NO: LCP2013-3253 DRAWN BY: RWHIPPLE 2013/02/05 CHECKED BY: CHUCKWOLFE 2013/02/05 APPROVED BY: SMILLER 2013/08/05 | QUALITY SYMBOLS ▽=0 ▽=0 ▽=0 | GENERAL TOLERANCES (UNLESS SPECIFIED) mm INCH 4 PLACES ± --- ± --- 3 PLACES ± --- ± --- 2 PLACES ± 0.05 ± --- 1 PLACE ± 0.10 ± --- 0 PLACE ± --- ± --- ANGULAR ±1/2° DRAFT WHERE APPLICABLE MUST REMAIN WITHIN DIMENSIONS | DIMENSION STYLE MM ONLY | SCALE 2:1 | DESIGN UNITS METRIC | THIRD ANGLE PROJECTION |
| | | | DRAWN BY: RWHIPPLE DATE: 2013/02/05 | CHECKED BY: SREED DATE: 99/01/21 | APPROVED BY: SMILLER DATE: 2013/08/05 | MATERIAL NO. SEE CHART |



| | | | | | | | | | | | |
|---|--|--|--------------------------|--------------------------------------|--|--|------------------------|---|--------------------|---------------------------|-----------------------------|
| SEE SHEET 1 EC NO. UDT2000-0413 DRW: JBINGHAM 99/01/02 CHK: SREED 99/01/02 APPR: CBIXLER 99/01/02 | QUALITY SYMBOLS MAJOR $\nabla = 0$ CRITICAL $\nabla C = 0$ | GENERAL TOLERANCES: (UNLESS SPECIFIED) | | SCALE 2 : 1 | DESIGN UNITS <input checked="" type="checkbox"/> mm <input type="checkbox"/> INCH | DIMENSIONS: <input type="checkbox"/> INCH <input type="checkbox"/> mm <input checked="" type="checkbox"/> mm ONLY | SHT 2 | REV 1 | | | |
| | | 4 PLACES ± 0.1 \pm 3 PLACES ± 0.1 \pm 2 PLACES ± 0.05 \pm 1 PLACE ± 0.10 \pm | ANGULAR: $\pm 1/2^\circ$ | DRAWN BY & DATE JBINGHAM 99/01/21 | CHECKED BY & DATE SREED 99/01/21 | APPROVED BY & DATE CBIXLER 99/01/21 | THIRD ANGLE PROJECTION | TITLE: SALES ASSEMBLY, HDM BACKPLANE CONNECTOR EXTENDED TAIL VERSION | MOLEX INCORPORATED | MATERIAL NO. SEE CHART | DRAWING NO. SD-74301-001 |
| DRAFT WHERE APPLICABLE MUST REMAIN WITHIN DIMENSIONS | | THIS DRAWING CONTAINS INFORMATION THAT IS PROPRIETARY TO MOLEX INCORPORATED AND SHOULD NOT BE USED WITHOUT WRITTEN PERMISSION. | | | | | | | | | |

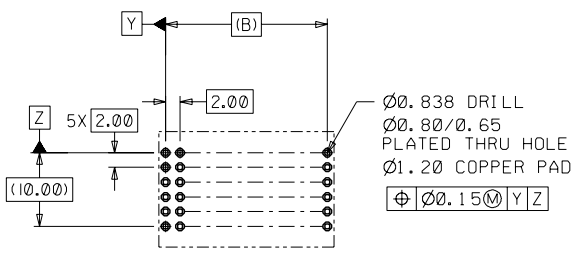
MATERIAL NUMBER ASSIGNMENT

- 0 = 72-CIRCUIT OPEN END
 - 1 = 144-CIRCUIT OPEN END
 - 2 = 72-CIRCUIT END WALL
 - 3 = 144-CIRCUIT END WALL
 - 4 = 72-CIRCUIT POLAR/GUIDE
 - 5 = 144-CIRCUIT POLAR/GUIDE
-
- 0 = 5.0mm MATING, 7.0mm TAIL
 - 1 = 5.5mm MATING, 7.0mm TAIL
 - 2 = 6.0mm MATING, 7.0mm TAIL

74301- * * * *

| PART NUMBER | DIM A | DIM B | DIM M | DIM T |
|-------------|-------|-------|-------|-------|
| 74301-0000 | 23.8 | 22.00 | 5.00 | 7.00 |
| 74301-0100 | 23.8 | 22.00 | 5.50 | 7.00 |
| 74301-0200 | 23.8 | 22.00 | 6.00 | 7.00 |
| 74301-1000 | 47.8 | 46.00 | 5.00 | 7.00 |
| 74301-1100 | 47.8 | 46.00 | 5.50 | 7.00 |
| 74301-1200 | 47.8 | 46.00 | 6.00 | 7.00 |
| 74301-2000 | 27.6 | 22.00 | 5.00 | 7.00 |
| 74301-2100 | 27.6 | 22.00 | 5.50 | 7.00 |
| 74301-2200 | 27.6 | 22.00 | 6.00 | 7.00 |
| 74301-3000 | 51.6 | 46.00 | 5.00 | 7.00 |
| 74301-3100 | 51.6 | 46.00 | 5.50 | 7.00 |
| 74301-3200 | 51.6 | 46.00 | 6.00 | 7.00 |
| 74301-40** | 31.6 | 22.00 | 5.00 | 7.00 |
| 74301-41** | 31.6 | 22.00 | 5.50 | 7.00 |
| 74301-42** | 31.6 | 22.00 | 6.00 | 7.00 |
| 74301-50** | 55.6 | 46.00 | 5.00 | 7.00 |
| 74301-51** | 55.6 | 46.00 | 5.50 | 7.00 |
| 74301-52** | 55.6 | 46.00 | 6.00 | 7.00 |

| NUMBER | GUIDE POST LOCATION | POLAR KEY POSITION |
|--------|---------------------|--------------------|
| 00 | N/A | N/A |
| 01 | B | |
| 02 | A | A |
| 03 | B | |
| 04 | A | B |
| 05 | B | |
| 06 | A | C |
| 07 | B | |
| 08 | A | D |
| 09 | B | |
| 10 | A | E |
| 11 | B | |
| 12 | A | F |
| 13 | B | |
| 14 | A | G |
| 15 | B | |
| 16 | A | H |
| 17 | B | |
| 18 | A | N/A |



PCB LAYOUT: COMPONENT SIDE
RECOMMENDED PCB THICKNESS: 2.50 MIN.

| | | | | | |
|---|--|---|---|---|-------------------------------|
| SEE SHEET 1 EC NO. UDT2000-04.13 DRAWN BY: JBINGHAM 99/01/02 CHK. SPEED 99/01/02 APPR: CBIXLER 99/01/02 | QUALITY SYMBOLS MAJOR = 0 CRITICAL = 0 V = 0 | GENERAL TOLERANCES: (UNLESS SPECIFIED) mm INCH 4 PLACES ±0.1 ±. 3 PLACES ±0. ±. 2 PLACES ±0.05 ±. 1 PLACE ±0.10 ±. ANGULAR: ± 1/2° | SCALE 2 : 1 DESIGN UNITS <input checked="" type="checkbox"/> mm <input type="checkbox"/> INCH DRAWN BY & DATE JBINGHAM 99/01/21 CHECKED BY & DATE SREED 99/01/21 APPROVED BY & DATE CBIXLER 99/01/21 | DIMENSIONS: <input type="checkbox"/> mm <input type="checkbox"/> INCH <input type="checkbox"/> mm ONLY <input checked="" type="checkbox"/> mm ONLY THIRD ANGLE PROJECTION | SHT REV REVISE ON CAD ONLY |
| | | | | | |
| CAD FILENAME: S74301X3.DGN MATERIAL NO. SD-74301-001 DRAWING NO. SD-74301-001 SHEET NO. 3 SIZE B | THIS DRAWING CONTAINS INFORMATION THAT IS PROPRIETARY TO MOLEX INCORPORATED AND SHOULD NOT BE USED WITHOUT WRITTEN PERMISSION. | | | | |