

Excellent Integrated System Limited

Stocking Distributor

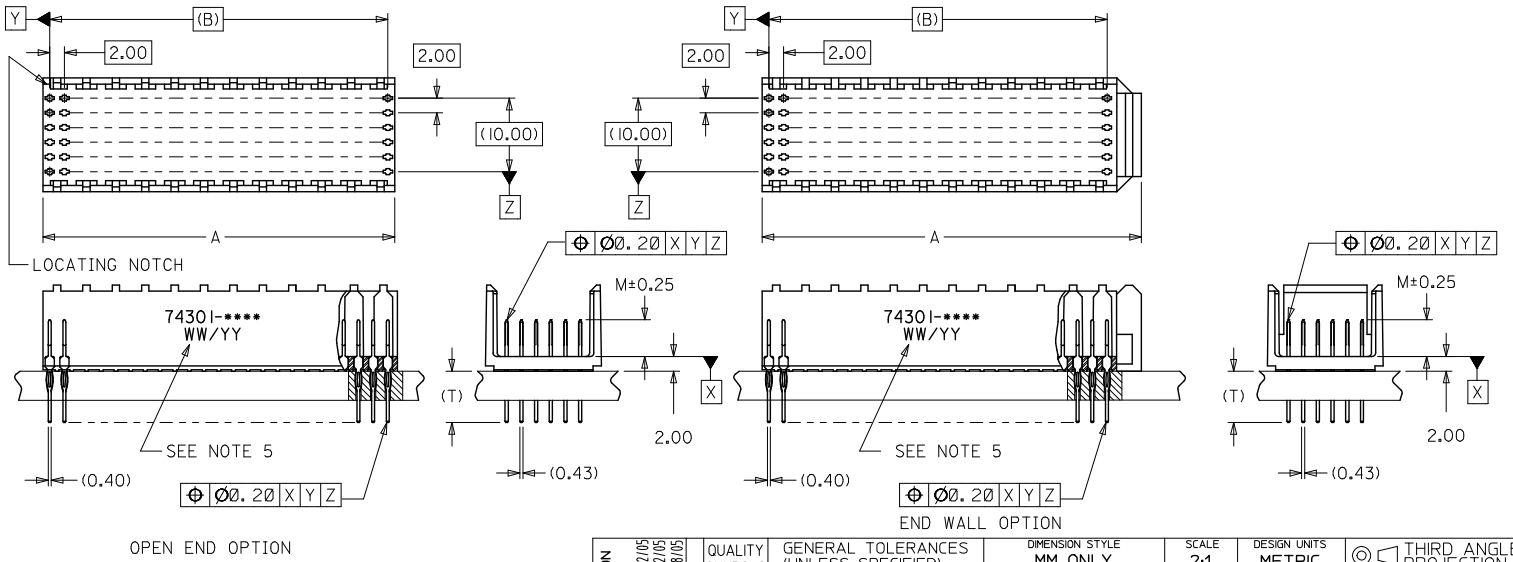
Click to view price, real time Inventory, Delivery & Lifecycle Information:

[Molex Connector Corporation](#)
[0743014018](#)

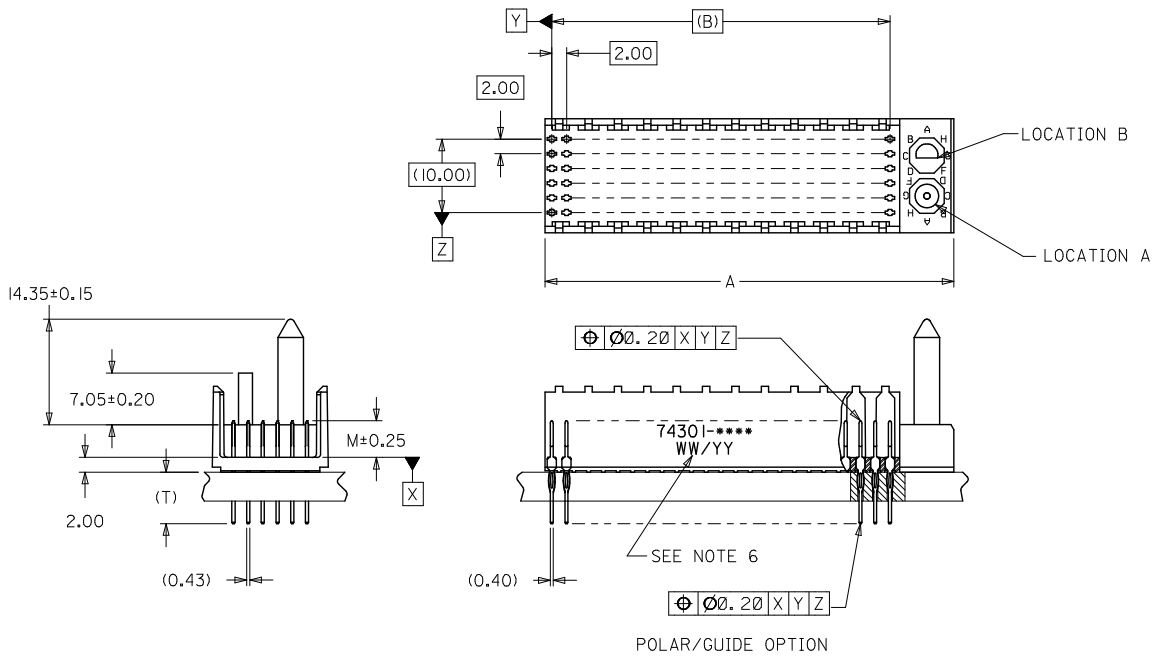
For any questions, you can email us directly:

sales@integrated-circuit.com

- NOTES:
1. MATERIALS: HOUSING - LIQUID CRYSTAL POLYMER (LCP)
GLASS-FILLED, UL 94V-0, COLOR: BLACK.
CONTACT - PHOSPHOR BRONZE.
 2. FINISH: SELECTIVE GOLD (Au) IN CONTACT AREA, 0.76 MICROMETERS MINIMUM THICKNESS,
SELECTIVE MATTE TIN (Sn) ON IN TAIL AREA.
NICKEL (Ni) OVERALL.
 3. THIS PART CONFORMS TO MOLEX PRODUCT SPECIFICATION PS-73670-9999.
 4. PACKAGE PER 70873-0868.
 5. PARTS MARKED WITH PART NUMBER AND DATE CODE ON EITHER SIDE,
APPROXIMATELY WHERE SHOWN.



LEAD FREE CONVERSION EC NO: LCP/2013-3253 DRAWN BY: RWHPPL 2013/02/05 CHKD BY: WOLFE 2013/02/05 APPR: SMILLER 2013/08/05	QUALITY SYMBOLS $\nabla=0$ $\nabla=0$ $\nabla=0$	GENERAL TOLERANCES (UNLESS SPECIFIED)		DIMENSION STYLE MM ONLY		SCALE 2:1	DESIGN UNITS METRIC	THIRD ANGLE PROJECTION	
			mm	INCH	DRAWN BY RWHPPL	DATE 2013/02/05	TITLE SALES ASSEMBLY, HDM BACKPLANE CONNECTOR, EXTENDED TAIL VERSION		
		4 PLACES	±---	±---	CHECKED BY SREED	DATE 99/01/21			
		3 PLACES	±---	±---	APPROVED BY SMILLER	DATE 2013/08/05			
	ANGULAR ±1/2° DRAFT WHERE APPLICABLE MUST REMAIN WITHIN DIMENSIONS		MATERIAL NO. SEE CHART		THIS DRAWING CONTAINS INFORMATION THAT IS PROPRIETARY TO MOLEX INCORPORATED AND SHOULD NOT BE USED WITHOUT WRITTEN PERMISSION				



SEE SHEET 1 EC NO: UCP2013-3253 DRAWN BY: RWHPPL 2013/02/05 CHECKED BY: CHKDMOLLE 2013/02/05 APPR: SMILLER 2013/08/05	QUALITY SYMBOLS $\nabla=0$ $\nabla=0$ $\nabla=0$	GENERAL TOLERANCES (UNLESS SPECIFIED)		DIMENSION STYLE MM ONLY		SCALE 2:1	DESIGN UNITS METRIC	THIRD ANGLE PROJECTION
		4 PLACES \pm --- \pm --- 3 PLACES \pm --- \pm --- 2 PLACES ± 0.05 \pm --- 1 PLACE ± 0.10 \pm --- 0 PLACE \pm --- \pm ---	mm INCH	DRAWN BY RWHPPL	DATE 2013/02/05	TITLE SALES ASSEMBLY, HDM BACKPLANE CONNECTOR, EXTENDED TAIL VERSION		
ANGLE $\pm 1/2^\circ$ DRAFT WHERE APPLICABLE MUST REMAIN WITHIN DIMENSIONS		APPROVED BY SMILLER		DATE 2013/08/05	MATERIAL NO. SEE CHART			
		SIZE B		THIS DRAWING CONTAINS INFORMATION THAT IS PROPRIETARY TO MOLEX INCORPORATED AND SHOULD NOT BE USED WITHOUT WRITTEN PERMISSION				
		DOCUMENT NO. SD-74301-001		SHEET NO. 2 OF 3				

MATERIAL NUMBER ASSIGNMENT

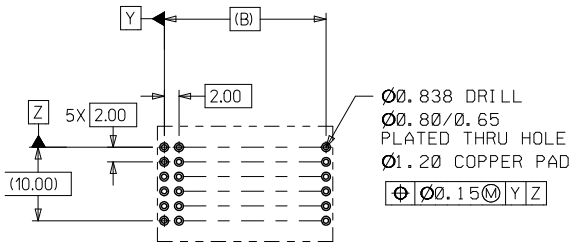
0 = 72-CIRCUIT OPEN END
 1 = 144-CIRCUIT OPEN END
 2 = 72-CIRCUIT END WALL
 3 = 144-CIRCUIT END WALL
 4 = 72-CIRCUIT POLAR/GUIDE
 5 = 144-CIRCUIT POLAR/GUIDE

0 = 5.0mm MATING, 7.0mm TAIL
 1 = 5.5mm MATING, 7.0mm TAIL
 2 = 6.0mm MATING, 7.0mm TAIL

74301- * * * *

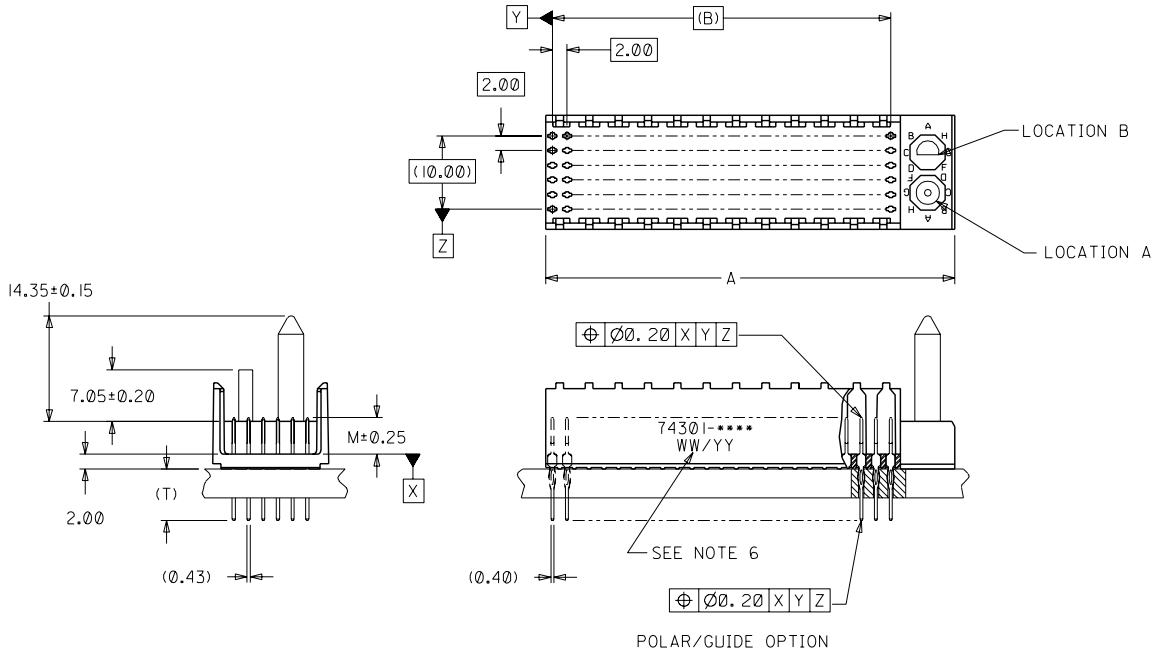
NUMBER	GUIDE POST LOCATION	POLAR KEY POSITION
00	N/A	N/A
01	B	A
02	A	
03	B	B
04	A	
05	B	C
06	A	D
07	B	
08	A	E
09	B	F
10	A	
11	B	G
12	A	
13	B	H
14	A	
15	B	
16	A	
17	B	
18	A	N/A

PART NUMBER	DIM A	DIM B	DIM M	DIM T
74301-0000	23.8	22.00	5.00	7.00
74301-0100	23.8	22.00	5.50	7.00
74301-0200	23.8	22.00	6.00	7.00
74301-1000	47.8	46.00	5.00	7.00
74301-1100	47.8	46.00	5.50	7.00
74301-1200	47.8	46.00	6.00	7.00
74301-2000	27.6	22.00	5.00	7.00
74301-2100	27.6	22.00	5.50	7.00
74301-2200	27.6	22.00	6.00	7.00
74301-3000	51.6	46.00	5.00	7.00
74301-3100	51.6	46.00	5.50	7.00
74301-3200	51.6	46.00	6.00	7.00
74301-40**	31.6	22.00	5.00	7.00
74301-41**	31.6	22.00	5.50	7.00
74301-42**	31.6	22.00	6.00	7.00
74301-50**	55.6	46.00	5.00	7.00
74301-51**	55.6	46.00	5.50	7.00
74301-52**	55.6	46.00	6.00	7.00



PCB LAYOUT: COMPONENT SIDE
 RECOMMENDED PCB THICKNESS: 2.50 MIN.

SEE SHEET 1 EC NO: UCP2013-3253 DRAWN BY: RWHIPPLE 2013/02/05 CHECKED BY: CHUCKWOLFE 2013/02/05 APPROVED BY: SMILLER 2013/08/05	QUALITY SYMBOLS ▽=0 ▽=0 ▽=0	GENERAL TOLERANCES (UNLESS SPECIFIED)	DIMENSION STYLE		DRAWN BY: RWHIPPLE DATE: 2013/02/05	SCALE: 2:1	DESIGN UNITS: METRIC	THIRD ANGLE PROJECTION
			mm	INCH				
		4 PLACES ± --- ± ---	MM ONLY		CHECKED BY: SREED DATE: 99/01/21	TITLE: SALES ASSEMBLY, HDM BACKPLANE CONNECTOR, EXTENDED TAIL VERSION		
		3 PLACES ± --- ± ---			APPROVED BY: SMILLER DATE: 2013/08/05	molex		
		2 PLACES ± 0.05 ± ---			MATERIAL NO. SEE CHART	DOCUMENT NO. SD-74301-001	SHEET NO. 3 OF 3	
		1 PLACE ± 0.10 ± ---			THIS DRAWING CONTAINS INFORMATION THAT IS PROPRIETARY TO MOLEX INCORPORATED AND SHOULD NOT BE USED WITHOUT WRITTEN PERMISSION			
		0 PLACE ± --- ± ---						
		ANGULAR ±1/2°						
		DRAFT WHERE APPLICABLE MUST REMAIN WITHIN DIMENSIONS						



SEE SHEET 1 EC NO. UDT2000-0413 DRW: JBINGHAM 99/01/02 CHK: SREED 99/01/02 APPR: CBIXLER 99/01/02	QUALITY SYMBOLS MAJOR = 0 CRITICAL = 0 C = 0	GENERAL TOLERANCES: (UNLESS SPECIFIED) 4 PLACES ±0.1 ±. 3 PLACES ±0. ±. 2 PLACES ±0.05 ±. 1 PLACE ±0.10 ±. ANGULAR: ± 1/2° DRAFT WHERE APPLICABLE MUST REMAIN WITHIN DIMENSIONS	SCALE 2 : 1 DESIGN UNITS <input checked="" type="checkbox"/> mm <input type="checkbox"/> INCH DRAWN BY & DATE JBINGHAM 99/01/21 CHECKED BY & DATE SREED 99/01/21 APPROVED BY & DATE CBIXLER 99/01/21	THIRD ANGLE PROJECTION DIMENSIONS: <input type="checkbox"/> INCH <input type="checkbox"/> mm <input checked="" type="checkbox"/> mm ONLY TITLE: SALES ASSEMBLY, HDM BACKPLANE CONNECTOR EXTENDED TAIL VERSION MOLEX INCORPORATED	SHT	REV
					2	2
CAD FILENAME: S74301X2.DGN MATERIAL NO. SEE CHART DRAWING NO. SD-74301-001 SHEET NO. 2 SIZE B				THIS DRAWING CONTAINS INFORMATION THAT IS PROPRIETARY TO MOLEX INCORPORATED AND SHOULD NOT BE USED WITHOUT WRITTEN PERMISSION.		

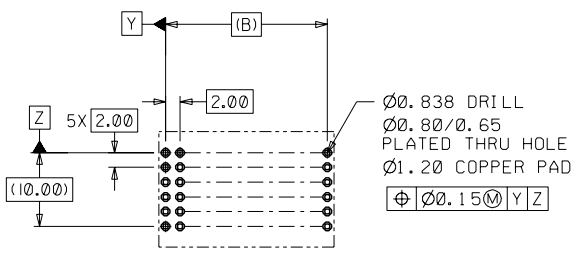
MATERIAL NUMBER ASSIGNMENT

- 0 = 72-CIRCUIT OPEN END
 - 1 = 144-CIRCUIT OPEN END
 - 2 = 72-CIRCUIT END WALL
 - 3 = 144-CIRCUIT END WALL
 - 4 = 72-CIRCUIT POLAR/GUIDE
 - 5 = 144-CIRCUIT POLAR/GUIDE
-
- 0 = 5.0mm MATING, 7.0mm TAIL
 - 1 = 5.5mm MATING, 7.0mm TAIL
 - 2 = 6.0mm MATING, 7.0mm TAIL

74301- * * * *

NUMBER	GUIDE POST LOCATION	POLAR KEY POSITION
00	N/A	N/A
01	B	
02	A	A
03	B	
04	A	B
05	B	
06	A	C
07	B	
08	A	D
09	B	
10	A	E
11	B	
12	A	F
13	B	
14	A	G
15	B	
16	A	H
17	B	
18	A	N/A

PART NUMBER	DIM A	DIM B	DIM M	DIM T
74301-0000	23.8	22.00	5.00	7.00
74301-0100	23.8	22.00	5.50	7.00
74301-0200	23.8	22.00	6.00	7.00
74301-1000	47.8	46.00	5.00	7.00
74301-1100	47.8	46.00	5.50	7.00
74301-1200	47.8	46.00	6.00	7.00
74301-2000	27.6	22.00	5.00	7.00
74301-2100	27.6	22.00	5.50	7.00
74301-2200	27.6	22.00	6.00	7.00
74301-3000	51.6	46.00	5.00	7.00
74301-3100	51.6	46.00	5.50	7.00
74301-3200	51.6	46.00	6.00	7.00
74301-40**	31.6	22.00	5.00	7.00
74301-41**	31.6	22.00	5.50	7.00
74301-42**	31.6	22.00	6.00	7.00
74301-50**	55.6	46.00	5.00	7.00
74301-51**	55.6	46.00	5.50	7.00
74301-52**	55.6	46.00	6.00	7.00



PCB LAYOUT: COMPONENT SIDE
RECOMMENDED PCB THICKNESS: 2.50 MIN.

SEE SHEET 1 EC NO. UDT2000-04.13 DRAWN BY: JBINGHAM 99/01/02 CHK. SREED 99/01/02 APPR: CBIXLER 99/01/02	QUALITY SYMBOLS MAJOR = 0 CRITICAL = 0 C = 0	GENERAL TOLERANCES: (UNLESS SPECIFIED) 4 PLACES ±0.1 ±. 3 PLACES ±0. ±. 2 PLACES ±0.05 ±. 1 PLACE ±0.10 ±. ANGULAR: ± 1/2° DRAFT WHERE APPLICABLE MUST REMAIN WITHIN DIMENSIONS	SCALE 2 : 1 DESIGN UNITS <input checked="" type="checkbox"/> mm <input type="checkbox"/> INCH DRAWN BY & DATE JBINGHAM 99/01/21 CHECKED BY & DATE SREED 99/01/21 APPROVED BY & DATE CBIXLER 99/01/21	THIRD ANGLE PROJECTION DIMENSIONS: <input type="checkbox"/> mm <input type="checkbox"/> INCH <input checked="" type="checkbox"/> mm ONLY TITLE: SALES ASSEMBLY, HDM BACKPLANE CONNECTOR EXTENDED TAIL VERSION MOLEX INCORPORATED	SHT	REV		
C	REV		CAD FILENAME: S74301X3.DGN	MATERIAL NO. SEE CHART	DRAWING NO. SD-74301-001	SHEET NO. 3		
THIS DRAWING CONTAINS INFORMATION THAT IS PROPRIETARY TO MOLEX INCORPORATED AND SHOULD NOT BE USED WITHOUT WRITTEN PERMISSION.						SIZE B		