

Excellent Integrated System Limited

Stocking Distributor

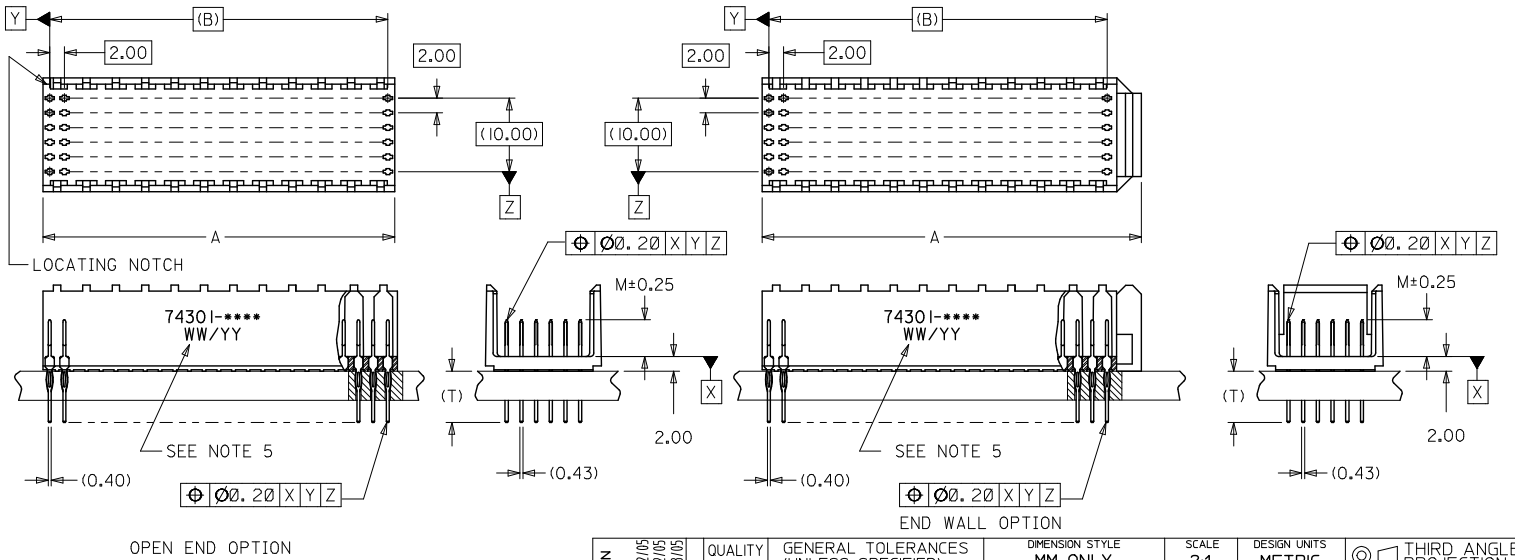
Click to view price, real time Inventory, Delivery & Lifecycle Information:

[Molex Connector Corporation](#)
[0743015107](#)

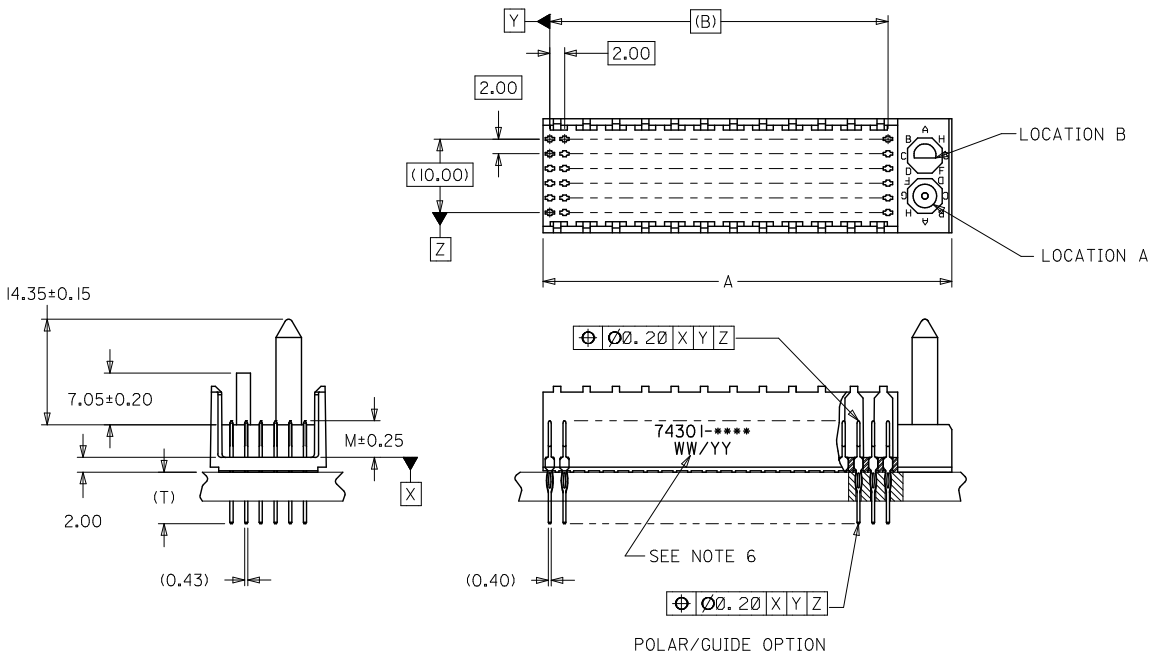
For any questions, you can email us directly:

sales@integrated-circuit.com

- NOTES:
1. MATERIALS: HOUSING - LIQUID CRYSTAL POLYMER (LCP)
GLASS-FILLED, UL 94V-0, COLOR: BLACK.
CONTACT - PHOSPHOR BRONZE.
 2. FINISH: SELECTIVE GOLD (Au) IN CONTACT AREA, 0.76 MICROMETERS MINIMUM THICKNESS,
SELECTIVE MATTE TIN (Sn) ON IN TAIL AREA.
NICKEL (Ni) OVERALL.
 3. THIS PART CONFORMS TO MOLEX PRODUCT SPECIFICATION PS-73670-9999.
 4. PACKAGE PER 70873-0868.
 5. PARTS MARKED WITH PART NUMBER AND DATE CODE ON EITHER SIDE,
APPROXIMATELY WHERE SHOWN.



LEAD FREE CONVERSION EC NO: LCP/2013-3253 DRAWN BY: RWHPPL 2013/02/05 CHKD BY: SREED 2013/02/05 APPR: SMILLER 2013/08/05	QUALITY SYMBOLS ▽=0 ▽=0 ▽=0	GENERAL TOLERANCES (UNLESS SPECIFIED)		DIMENSION STYLE MM ONLY		SCALE 2:1	DESIGN UNITS METRIC	THIRD ANGLE PROJECTION	
		4 PLACES ± --- ± ---	mm	INCH	DRAWN BY RWHPPL	DATE 2013/02/05	TITLE SALES ASSEMBLY, HDM BACKPLANE CONNECTOR, EXTENDED TAIL VERSION molex DOCUMENT NO. SD-74301-001 SHEET NO. 1 OF 3		
		3 PLACES ± --- ± ---			CHECKED BY SREED	DATE 99/01/21			
		2 PLACES ± 0.05 ± ---			APPROVED BY	DATE			
1 PLACE ± 0.10 ± ---			SMILLER	2013/08/05					
		0 PLACE ± --- ± ---	ANGULAR ±1/2° DRAFT WHERE APPLICABLE MUST REMAIN WITHIN DIMENSIONS		MATERIAL NO. SEE CHART				
			SIZE B		THIS DRAWING CONTAINS INFORMATION THAT IS PROPRIETARY TO MOLEX INCORPORATED AND SHOULD NOT BE USED WITHOUT WRITTEN PERMISSION				



SEE SHEET 1 EC NO: UCP2013-3253 DRAWN BY: RWHPPL 2013/02/05 CHKD BY: CHKMOLLE 2013/02/05 APPR: SMILLER 2013/08/05	QUALITY SYMBOLS $\nabla=0$ $\nabla=0$ $\nabla=0$	GENERAL TOLERANCES (UNLESS SPECIFIED)		DIMENSION STYLE MM ONLY		SCALE 2:1	DESIGN UNITS METRIC	THIRD ANGLE PROJECTION	
			mm	INCH	DRAWN BY RWHPPL	DATE 2013/02/05	TITLE SALES ASSEMBLY, HDM BACKPLANE CONNECTOR, EXTENDED TAIL VERSION		
		4 PLACES	±---	±---	CHECKED BY SREED	DATE 99/01/21			
		3 PLACES	±---	±---	APPROVED BY SMILLER	DATE 2013/08/05			
		2 PLACES	±0.05	±---	MATERIAL NO. SEE CHART		DOCUMENT NO. SD-74301-001	SHEET NO. 2 OF 3	
		1 PLACE	±0.10	±---	THIS DRAWING CONTAINS INFORMATION THAT IS PROPRIETARY TO MOLEX INCORPORATED AND SHOULD NOT BE USED WITHOUT WRITTEN PERMISSION				
		0 PLACE	±---	±---					

MATERIAL NUMBER ASSIGNMENT

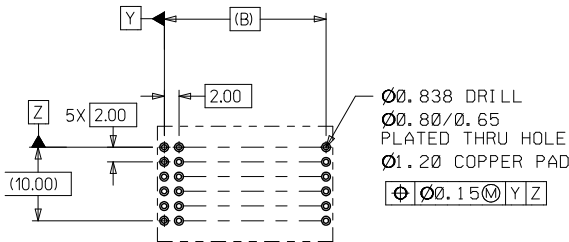
- 0 = 72-CIRCUIT OPEN END
- 1 = 144-CIRCUIT OPEN END
- 2 = 72-CIRCUIT END WALL
- 3 = 144-CIRCUIT END WALL
- 4 = 72-CIRCUIT POLAR/GUIDE
- 5 = 144-CIRCUIT POLAR/GUIDE

- 0 = 5.0mm MATING, 7.0mm TAIL
- 1 = 5.5mm MATING, 7.0mm TAIL
- 2 = 6.0mm MATING, 7.0mm TAIL

74301- * * * *

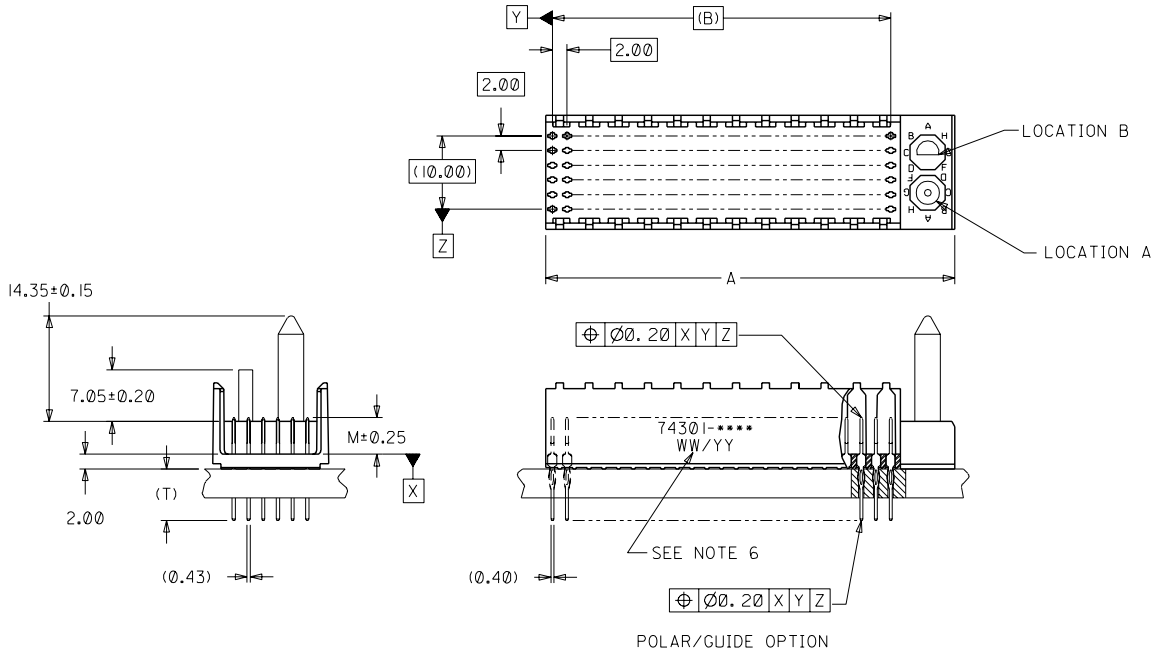
NUMBER	GUIDE POST LOCATION	POLAR KEY POSITION
00	N/A	N/A
01	B	A
02	A	
03	B	B
04	A	
05	B	C
06	A	
07	B	D
08	A	
09	B	E
10	A	
11	B	F
12	A	
13	B	G
14	A	
15	B	H
16	A	
17	B	
18	A	N/A

PART NUMBER	DIM A	DIM B	DIM M	DIM T
74301-0000	23.8	22.00	5.00	7.00
74301-0100	23.8	22.00	5.50	7.00
74301-0200	23.8	22.00	6.00	7.00
74301-1000	47.8	46.00	5.00	7.00
74301-1100	47.8	46.00	5.50	7.00
74301-1200	47.8	46.00	6.00	7.00
74301-2000	27.6	22.00	5.00	7.00
74301-2100	27.6	22.00	5.50	7.00
74301-2200	27.6	22.00	6.00	7.00
74301-3000	51.6	46.00	5.00	7.00
74301-3100	51.6	46.00	5.50	7.00
74301-3200	51.6	46.00	6.00	7.00
74301-40**	31.6	22.00	5.00	7.00
74301-41**	31.6	22.00	5.50	7.00
74301-42**	31.6	22.00	6.00	7.00
74301-50**	55.6	46.00	5.00	7.00
74301-51**	55.6	46.00	5.50	7.00
74301-52**	55.6	46.00	6.00	7.00



PCB LAYOUT: COMPONENT SIDE
RECOMMENDED PCB THICKNESS: 2.50 MIN.

SEE SHEET 1 EC NO: LCP2013-3253 DRAWN BY: RWHIPPLE 2013/02/05 CHECKED BY: CHENWOLLE 2013/02/05 APPROVED BY: SMILLER 2013/08/05	QUALITY SYMBOLS ▽=0 ▽=0 ▽=0	GENERAL TOLERANCES (UNLESS SPECIFIED)	DIMENSION STYLE		DRAWN BY: RWHIPPLE DATE: 2013/02/05	SCALE: 2:1	DESIGN UNITS: METRIC	THIRD ANGLE PROJECTION
			mm	INCH				
		4 PLACES ± --- ± ---	MM ONLY		CHECKED BY: SREED DATE: 99/01/21	TITLE: SALES ASSEMBLY, HDM BACKPLANE CONNECTOR, EXTENDED TAIL VERSION		
		3 PLACES ± --- ± ---			APPROVED BY: SMILLER DATE: 2013/08/05	molex		
		2 PLACES ± 0.05 ± ---			MATERIAL NO. SEE CHART	DOCUMENT NO. SD-74301-001	SHEET NO. 3 OF 3	
		1 PLACE ± 0.10 ± ---			THIS DRAWING CONTAINS INFORMATION THAT IS PROPRIETARY TO MOLEX INCORPORATED AND SHOULD NOT BE USED WITHOUT WRITTEN PERMISSION			
		0 PLACE ± --- ± ---						
		ANGULAR ±1/2°						
		DRAFT WHERE APPLICABLE MUST REMAIN WITHIN DIMENSIONS						



SEE SHEET 1 EC NO. UDT2000-0413 DRW: JBINGHAM 99/01/02 CHK: SREED 99/01/02 APPR: CBIXLER 99/01/02	QUALITY SYMBOLS MAJOR $\nabla = 0$ CRITICAL $\nabla C = 0$	GENERAL TOLERANCES: (UNLESS SPECIFIED)		SCALE 2 : 1	DESIGN UNITS <input checked="" type="checkbox"/> mm <input type="checkbox"/> INCH	THIRD ANGLE PROJECTION <input type="checkbox"/> INCH <input type="checkbox"/> mm <input checked="" type="checkbox"/> mm ONLY	DIMENSIONS: <input type="checkbox"/> mm <input type="checkbox"/> INCH <input checked="" type="checkbox"/> mm ONLY	SHT 2	REV 001
		DRAWN BY & DATE JBINGHAM 99/01/21	CHECKED BY & DATE SREED 99/01/21	APPROVED BY & DATE CBIXLER 99/01/21	CAD FILENAME S74301X2.DGN	MATERIAL NO. SEE CHART	DRAWING NO. SD-74301-001	SHEET NO. 2	SIZE B
DRAFT WHERE APPLICABLE MUST REMAIN WITHIN DIMENSIONS		THIS DRAWING CONTAINS INFORMATION THAT IS PROPRIETARY TO MOLEX INCORPORATED AND SHOULD NOT BE USED WITHOUT WRITTEN PERMISSION.							

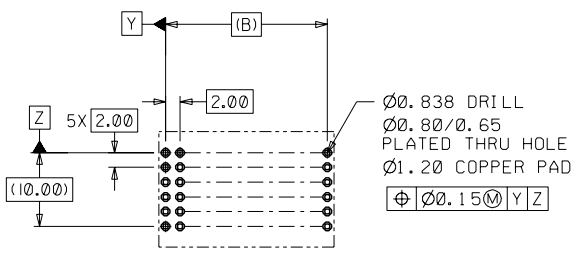
MATERIAL NUMBER ASSIGNMENT

- 0 = 72-CIRCUIT OPEN END
 - 1 = 144-CIRCUIT OPEN END
 - 2 = 72-CIRCUIT END WALL
 - 3 = 144-CIRCUIT END WALL
 - 4 = 72-CIRCUIT POLAR/GUIDE
 - 5 = 144-CIRCUIT POLAR/GUIDE
-
- 0 = 5.0mm MATING, 7.0mm TAIL
 - 1 = 5.5mm MATING, 7.0mm TAIL
 - 2 = 6.0mm MATING, 7.0mm TAIL

74301- * * * *

NUMBER	GUIDE POST LOCATION	POLAR KEY POSITION
00	N/A	N/A
01	B	
02	A	A
03	B	
04	A	B
05	B	
06	A	C
07	B	
08	A	D
09	B	
10	A	E
11	B	
12	A	F
13	B	
14	A	G
15	B	
16	A	H
17	B	
18	A	N/A

PART NUMBER	DIM A	DIM B	DIM M	DIM T
74301-0000	23.8	22.00	5.00	7.00
74301-0100	23.8	22.00	5.50	7.00
74301-0200	23.8	22.00	6.00	7.00
74301-1000	47.8	46.00	5.00	7.00
74301-1100	47.8	46.00	5.50	7.00
74301-1200	47.8	46.00	6.00	7.00
74301-2000	27.6	22.00	5.00	7.00
74301-2100	27.6	22.00	5.50	7.00
74301-2200	27.6	22.00	6.00	7.00
74301-3000	51.6	46.00	5.00	7.00
74301-3100	51.6	46.00	5.50	7.00
74301-3200	51.6	46.00	6.00	7.00
74301-40**	31.6	22.00	5.00	7.00
74301-41**	31.6	22.00	5.50	7.00
74301-42**	31.6	22.00	6.00	7.00
74301-50**	55.6	46.00	5.00	7.00
74301-51**	55.6	46.00	5.50	7.00
74301-52**	55.6	46.00	6.00	7.00



PCB LAYOUT: COMPONENT SIDE
RECOMMENDED PCB THICKNESS: 2.50 MIN.

SEE SHEET 1 EC NO. UDT2000-04.13 DRAWN BY: JBINGHAM 99/01/02 CHK. SPEED 99/01/02 APPR: CBIXLER 99/01/02 REV C	QUALITY SYMBOLS MAJOR = 0 CRITICAL = 0 V = 0	GENERAL TOLERANCES: (UNLESS SPECIFIED)	SCALE 2 : 1	DESIGN UNITS <input checked="" type="checkbox"/> mm <input type="checkbox"/> INCH	THIRD ANGLE PROJECTION <input type="checkbox"/> mm <input type="checkbox"/> INCH <input checked="" type="checkbox"/> mm ONLY	SHT	REV	
		4 PLACES ±0.1	mm	INCH	DRAWN BY & DATE JBINGHAM 99/01/21	TITLE: SALES ASSEMBLY, HDM BACKPLANE CONNECTOR EXTENDED TAIL VERSION MOLEX INCORPORATED		
		3 PLACES ±0.1			CHECKED BY & DATE SPEED 99/01/21			
		2 PLACES ±0.05			APPROVED BY & DATE CBIXLER 99/01/21			
1 PLACE ±0.10			CAD FILENAME S74301X3.DGN	MATERIAL NO. SEE CHART	DRAWING NO. SD-74301-001		SHEET NO. 3	
DRAFT WHERE APPLICABLE MUST REMAIN WITHIN DIMENSIONS		ANGULAR: ± 1/2°		THIS DRAWING CONTAINS INFORMATION THAT IS PROPRIETARY TO MOLEX INCORPORATED AND SHOULD NOT BE USED WITHOUT WRITTEN PERMISSION.		SIZE	B	