



Distributor of Molex Connector Corporation: Excellent Integrated System Limited
Datasheet of 0743201009 - Connector Receptacle DVI-A 18 Position Through Hole, Right
Angle, Horizontal

Contact us: sales@integrated-circuit.com Website: www.integrated-circuit.com

Excellent Integrated System Limited

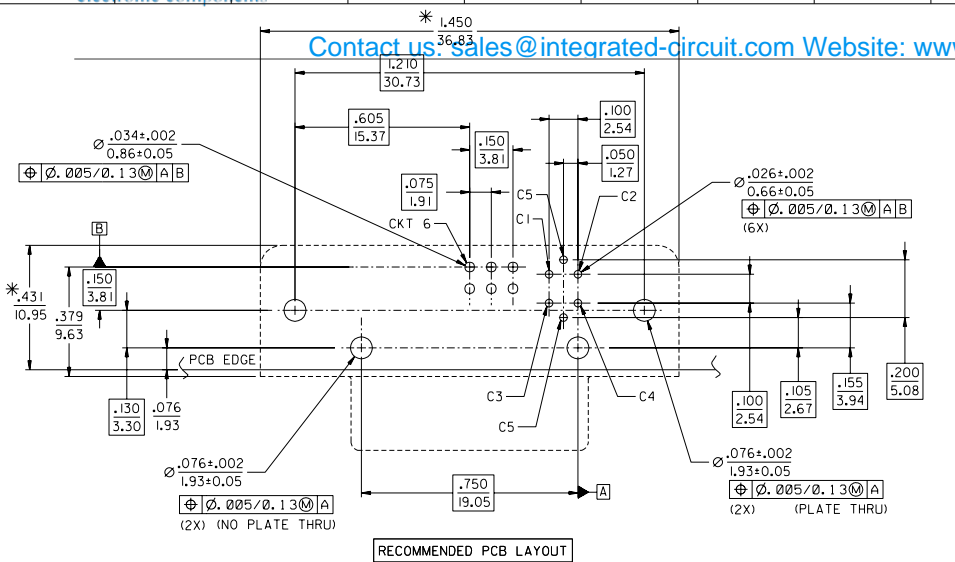
Stocking Distributor

Click to view price, real time Inventory, Delivery & Lifecycle Information:

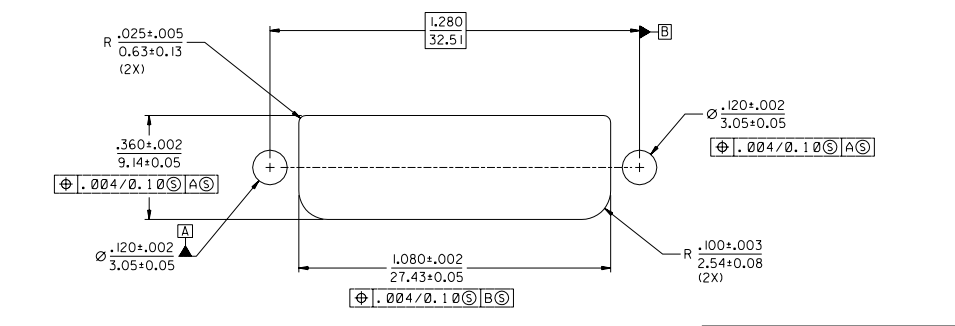
[Molex Connector Corporation](#)
[0743201009](#)

For any questions, you can email us directly:
sales@integrated-circuit.com

Contact us: sales@integrated-circuit.com Website: www.integrated-circuit.com



* THESE DIMENSIONS REPRESENT CONNECTOR OVERLAY ON PCB.



RECOMMENDED PANEL CUT-OUT
 PANEL THICKNESS: .030" - .040"

PLATING OPTIONS:
PLATING OPTION #1:
 OUTER SHIELD -- 150u"/(3.75um) MIN. BRIGHT TIN OVER
 50u"/(1.27um) MIN. NICKEL OVER COPPER FLASH.
 .075"/(1.91mm) CONTACTS -- 30u"/(0.75um) MIN. SELECT GOLD AND
 100u"/(2.50um) MIN. SELECT PURE TIN OVER 50u"/(1.27um) MIN. NICKEL OVERALL.
 .100"/(2.54mm) CONTACTS -- 30u"/(0.75um) MIN. SELECT GOLD AND
 100u"/(2.50um) MIN. SELECT PURE TIN OVER 50u"/(1.27um) MIN. NICKEL OVERALL.
 MICROCROSS GROUND -- 30u"/(0.75um) MIN. SELECT GOLD AND
 100u"/(2.50um) MIN. SELECT PURE TIN OVER 50u"/(1.27um) MIN. NICKEL OVERALL.

PLATING OPTION #2:
 OUTER SHIELD -- 150u"/(3.75um) MIN. BRIGHT TIN OVER
 50u"/(1.27um) MIN. NICKEL OVER COPPER FLASH.
 .075"/(1.91mm) CONTACTS -- SELECT GOLD FLASH AND
 100u"/(2.50um) MIN. SELECT PURE TIN OVER 50u"/(1.27um) MIN. NICKEL OVERALL.
 .100"/(2.54mm) CONTACTS -- SELECT GOLD FLASH AND
 100u"/(2.50um) MIN. SELECT PURE TIN OVER 50u"/(1.27um) MIN. NICKEL OVERALL.
 MICROCROSS GROUND -- 30u"/(0.75um) MIN. SELECT GOLD AND
 100u"/(2.50um) MIN. SELECT PURE TIN OVER 50u"/(1.27um) MIN. NICKEL OVERALL.

MODIFICATION EC NO. SH2004-0130 DRAWN: DALE 04/03/05 CHK: HARVEY 04/03/11 APPR: SHILLING 04/03/12	DESCRIPTION MAJOR CRITICAL MINOR	GENERAL TOLERANCES: (UNLESS SPECIFIED):		SCALE 4 ± 1	DESIGN UNITS <input type="checkbox"/> mm <input checked="" type="checkbox"/> INCH	DIMENSIONS: <input type="checkbox"/> INCH ONLY <input checked="" type="checkbox"/> INCH <input type="checkbox"/> mm	SHT REV	
		4 PLACES ±0.000 ±.010 3 PLACES ±0.000 ±.010 2 PLACES ±0.025 ±.010 1 PLACE ±0.25 ±.010		DRAWN BY & DATE KSMITH 99/07/15	THIRD ANGLE PROJECTION			TITLE: DVI - A RIGHT ANGLE RECEPTACLE CONNECTOR
		ANGLAR ± 1/2°		CHECKED BY & DATE DSCHMIDG 99/07/15	MOLEX INCORPORATED			SHEET NO. 2
		DRAFT WHERE APPLICABLE MUST REMAIN WITHIN DIMENSIONS		APPROVED BY & DATE RNELSON 99/07/15	CAD FILENAME SD74320017.S02	MATERIAL NO. SEE CHART	DRAWING NO. SD-74320-017	SIZE C