

Excellent Integrated System Limited

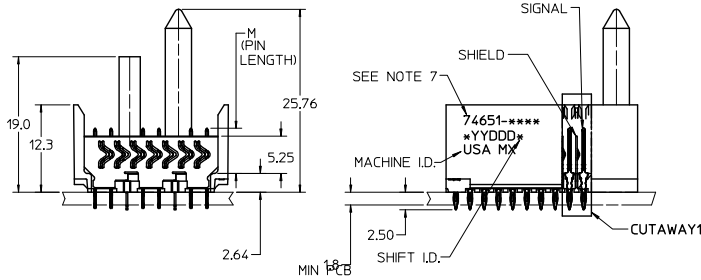
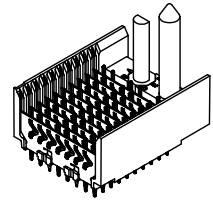
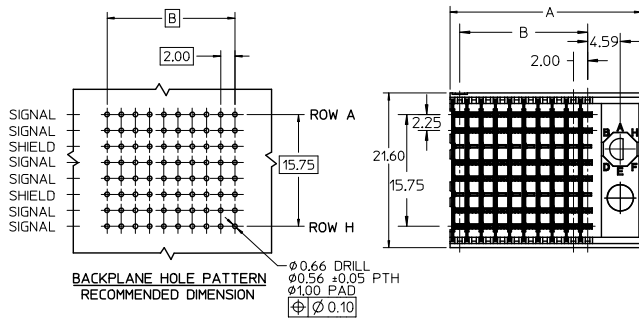
Stocking Distributor

Click to view price, real time Inventory, Delivery & Lifecycle Information:

[Molex Connector Corporation](#)
[0746511031](#)

For any questions, you can email us directly:

sales@integrated-circuit.com

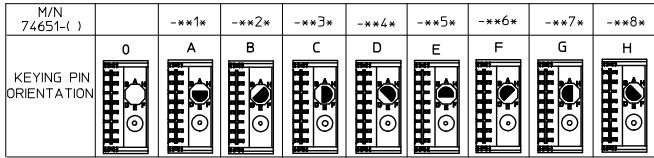


NOTES:

- MATERIAL: HOUSING -LIQUID CRYSTAL POLYMER (LCP) GLASS-FILLED. UL 94-0. COLOR BLACK. SIGNAL & SHIELD -HIGH PERFORMANCE COPPER ALLOY.
- FINISHES:
CONTACT AREA: SELECTIVE GOLD (Au)
PCB TAILS: SELECTIVE MATTE TIN (Sn)
NICKEL (Ni) OVERALL.
- THIS PART CONFORMS TO MOLEX PRODUCT SPECIFICATION PS-74031-999.
- FOR MIXED CONTACT MATING LENGTHS CONSULT MOLEX FOR AVAILABILITY.
- FOR SPECIFIC PART NUMBER AND MATING INFORMATION REFER TO SHEET 2.
- PACKAGE PER PK-74061-003.
- MARK PART NUMBER AND DATE CODE APPROXIMATELY WHERE SHOWN
- MAPS (MOLEX ADVANCED PLATING SYSTEM).

THE PRIMARY CARTON WITH A LABEL STATING "ELV AND RoHS COMPLIANT" IS LEAD FREE. CARTONS WITHOUT THIS LABEL MAY CONTAIN LEAD.

LEAD FREE CONVERSION EC NO: UCP2015-0687 2012/08/24 DRAWINGS: CHK/MOLFE 2012/11/28 APPR:SMILLER 2012/12/14	QUALITY SYMBOLS ∇=0 ∇=0 ∇=0	GENERAL TOLERANCES (UNLESS SPECIFIED)		DIMENSION STYLE MM ONLY		SCALE 2.5:1	DESIGN UNITS METRIC	THIRD ANGLE PROJECTION	
		4 PLACES ±	mm	INCH	DRAWN BY MOWANG	DATE 2001/03/26	TITLE HSD SALES ASSEMBLY 8 ROW SHIELD END BACKPLANE 		
		3 PLACES ±	mm	INCH	CHECKED BY JLAURX	DATE 2001/04/01			
		2 PLACES ±	mm	INCH	APPROVED BY CBIXLER	DATE 2001/04/01			
1 PLACE ±	mm	INCH	MATERIAL NO. SEE SHEET 2	DOCUMENT NO. SD-74651-002	SHEET NO. 1 OF 2				
0 PLACE ±	mm	INCH	ANGULAR ±1/2°		THIS DRAWING CONTAINS INFORMATION THAT IS PROPRIETARY TO MOLEX INCORPORATED AND SHOULD NOT BE USED WITHOUT WRITTEN PERMISSION				
DRAFT WHERE APPLICABLE MUST REMAIN WITHIN DIMENSIONS									



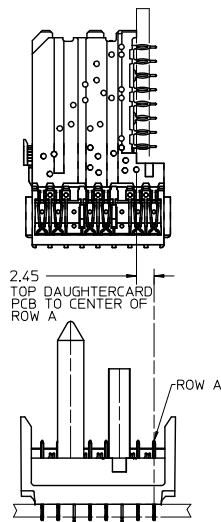
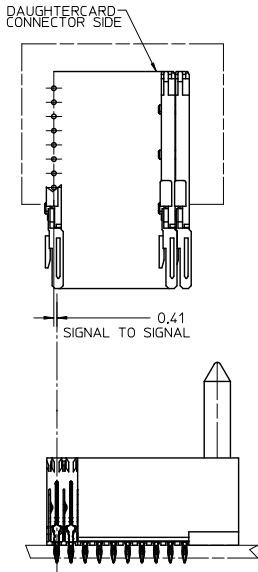
74651-***x

NUMBER OF COLUMNS/
PLATING

- 10 = 10 COLUMN MATTE TIN (FORMERLY TIN/LEAD)
- 25 = 25 COLUMN MATTE TIN (FORMERLY TIN/LEAD)
- 60 = 10 COLUMN MATTE TIN (MAPS)
- 75 = 25 COLUMN MATTE TIN (MAPS)
- 90 = 10 COLUMN MATTE TIN
- 85 = 25 COLUMN MATTE TIN

CONTACT LOAD
(PIN LENGTH)

- 1 & 6 = 4.75
- 2 & 7 = 6.25
- 3 & 8 = 4.25
- 4 & 9 = 5.15



PART NUMBER	COLUMN	NUMBER OF SIGNAL PIN	NUMBER OF SHIELD	A	B	M	GOLD THICKNESS MICROMETER	TIN THICKNESS MICROMETER
74651-60*1							0.25 MAPS	
74651-60*1	10	60	10	27.00	18.00	4.75	0.76	0.76-1.52
74651-60*6							1.27	
74651-75*1							0.25 MAPS	
74651-75*1	25	150	25	57.00	48.00	6.25	0.76	
74651-75*6							1.27	
74651-60*2							0.25 MAPS	
74651-60*2	10	60	10	27.00	18.00	4.25	0.76	
74651-60*7							1.27	
74651-75*2							0.25 MAPS	
74651-75*2	25	150	25	57.00	48.00	5.15	0.76	
74651-75*7							1.27	
74651-60*3							0.25 MAPS	
74651-60*3	10	60	10	27.00	18.00	4.25	0.76	
74651-60*8							1.27	
74651-75*3							0.25 MAPS	
74651-75*3	25	150	25	57.00	48.00	5.15	0.76	
74651-75*8							1.27	
74651-60*4							0.25 MAPS	
74651-60*4	10	60	10	27.00	18.00	4.25	0.76	
74651-60*9							1.27	
74651-75*4							0.25 MAPS	
74651-75*4	25	150	25	57.00	48.00	5.15	0.76	
74651-75*9							1.27	

SEE SHEET 1 EC NO: UCP 2013-0687 DRAWINGS: 2012/08/24 CHK: CHOMLIFE 2012/11/28 APPR: SMILLER 2012/12/14	QUALITY SYMBOLS ∇=0 ∇=0 ∇=0	GENERAL TOLERANCES (UNLESS SPECIFIED)	DIMENSION STYLE MM ONLY	SCALE 2.5:1	DESIGN UNITS METRIC	THIRD ANGLE PROJECTION	
		4 PLACES ± --- INCH 3 PLACES ± --- INCH 2 PLACES ± --- INCH 1 PLACE ± --- INCH 0 PLACE ± --- INCH	DRAWN BY: MOWANG CHECKED BY: JLAURX APPROVED BY: CBIXLER	DATE: 2001/03/26 DATE: 2001/04/01 DATE: 2001/04/01	TITLE: HSD SALES ASSEMBLY 8 ROW SHIELD END BACKPLANE		
		ANGULAR ± 1/2° DRAFT WHERE APPLICABLE MUST REMAIN WITHIN DIMENSIONS	MATERIAL NO. SEE TABLE	DOCUMENT NO. SD-74651-002	SHEET NO. 2 OF 2		
		THIS DRAWING CONTAINS INFORMATION THAT IS PROPRIETARY TO MOLEX INCORPORATED AND SHOULD NOT BE USED WITHOUT WRITTEN PERMISSION					