

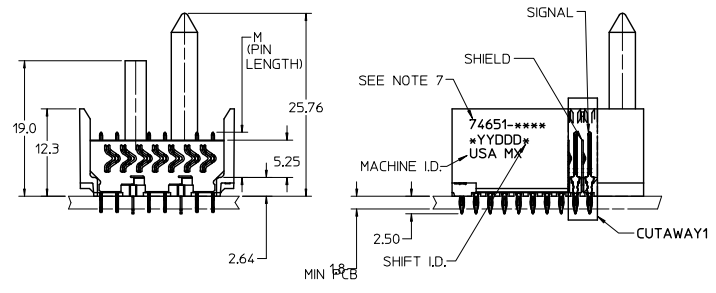
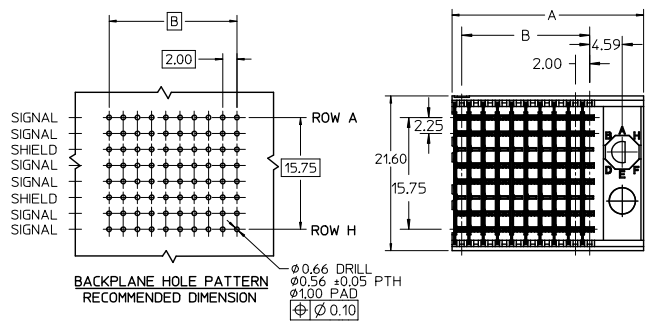
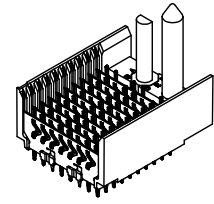
Excellent Integrated System Limited

Stocking Distributor

Click to view price, real time Inventory, Delivery & Lifecycle Information:

[Molex Connector Corporation](#)
[0746512554](#)

For any questions, you can email us directly:
sales@integrated-circuit.com

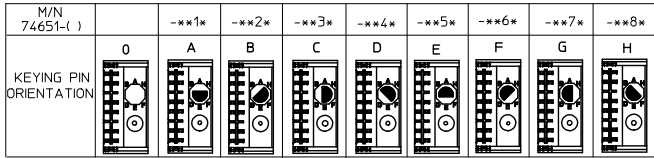


NOTES:

1. MATERIAL: HOUSING -LIQUID CRYSTAL POLYMER (LCP) GLASS-FILLED. UL 94-0. COLOR BLACK. SIGNAL & SHIELD -HIGH PERFORMANCE COPPER ALLOY.
2. FINISHES:
CONTACT AREA: SELECTIVE GOLD (Au)
PCB TAILS: SELECTIVE MATTE TIN (Sn)
NICKEL (Ni) OVERALL.
3. THIS PART CONFORMS TO MOLEX PRODUCT SPECIFICATION PS-74031-999.
4. FOR MIXED CONTACT MATING LENGTHS CONSULT MOLEX FOR AVAILABILITY.
5. FOR SPECIFIC PART NUMBER AND MATING INFORMATION REFER TO SHEET 2.
6. PACKAGE PER PK-74061-003.
7. MARK PART NUMBER AND DATE CODE APPROXIMATELY WHERE SHOWN
8. MAPS (MOLEX ADVANCED PLATING SYSTEM).

THE PRIMARY CARTON WITH A LABEL STATING "ELV AND RoHS COMPLIANT" IS LEAD FREE. CARTONS WITHOUT THIS LABEL MAY CONTAIN LEAD.

LEAD FREE CONVERSION EC NO: UCP2015-0687 DRAWINGS: 2012/08/24 CHK: MÖLLE: 2012/11/28 APPR: SMILLER: 2012/12/14	QUALITY SYMBOLS ∇=0 ∇=0 ∇=0	GENERAL TOLERANCES (UNLESS SPECIFIED)		DIMENSION STYLE MM ONLY		SCALE 2.5:1	DESIGN UNITS METRIC	THIRD ANGLE PROJECTION	
		4 PLACES ± --- ± ---	3 PLACES ± --- ± ---	DRAWN BY MOWANG	DATE 2001/03/26	TITLE HSD SALES ASSEMBLY 8 ROW SHIELD END BACKPLANE			
		2 PLACES ± --- ± ---	1 PLACE ± --- ± ---	CHECKED BY JLAURX	DATE 2001/04/01	molex			
		0 PLACE ± --- ± ---	ANGULAR ±1/2°	APPROVED BY CBIXLER	DATE 2001/04/01	MATERIAL NO. SEE SHEET 2	DOCUMENT NO. SD-74651-002	SHEET NO. 1 OF 2	
DRAFT WHERE APPLICABLE MUST REMAIN WITHIN DIMENSIONS		THIS DRAWING CONTAINS INFORMATION THAT IS PROPRIETARY TO MOLEX INCORPORATED AND SHOULD NOT BE USED WITHOUT WRITTEN PERMISSION							



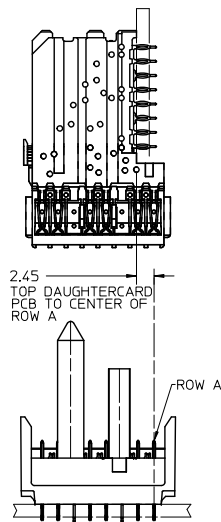
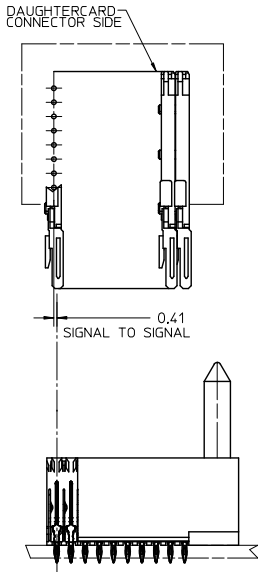
74651-***x

NUMBER OF COLUMNS/
PLATING

- 10 = 10 COLUMN MATTE TIN (FORMERLY TIN/LEAD)
- 25 = 25 COLUMN MATTE TIN (FORMERLY TIN/LEAD)
- 60 = 10 COLUMN MATTE TIN (MAPS)
- 75 = 25 COLUMN MATTE TIN (MAPS)
- 90 = 10 COLUMN MATTE TIN
- 85 = 25 COLUMN MATTE TIN

CONTACT LOAD
(PIN LENGTH)

- 1 & 6 = 4.75
- 2 & 7 = 6.25
- 3 & 8 = 4.25
- 4 & 9 = 5.15



PART NUMBER	COLUMN	NUMBER OF SIGNAL PIN	NUMBER OF SHIELD	A	B	M	GOLD THICKNESS MICROMETER	TIN THICKNESS MICROMETER
74651-60*1	10	60	10	27.00	18.00	4.75	0.25 MAPS	0.76-1.52
74651-75*1							0.76	
74651-85*1							1.27	
74651-60*2	25	150	25	57.00	48.00	6.25	0.25 MAPS	
74651-75*2							0.76	
74651-85*2							1.27	
74651-60*3	10	60	10	27.00	18.00	4.25	0.25 MAPS	
74651-75*3							0.76	
74651-85*3							1.27	
74651-60*4	10	60	10	27.00	18.00	5.15	0.25 MAPS	
74651-75*4							0.76	
74651-85*4							1.27	

SEE SHEET 1 EC NO: UCP 2013-0687 DRAWINGS: 2012/08/24 CHK: CHOMLIFE 2012/11/28 APPR: SMILLER 2012/12/14 REV: DESCRIPTION	QUALITY SYMBOLS	GENERAL TOLERANCES (UNLESS SPECIFIED)	DIMENSION STYLE MM ONLY	SCALE 2.5:1	DESIGN UNITS METRIC	THIRD ANGLE PROJECTION
	▽=0	4 PLACES ± --- ± ---	mm INCH	DRAWN BY MOWANG	DATE 2001/03/26	HSD SALES ASSEMBLY 8 ROW SHIELD END BACKPLANE molex SD-74651-002 SHEET NO. 2 OF 2
	▽=0	3 PLACES ± --- ± ---		CHECKED BY JLAURX	DATE 2001/04/01	
	▽=0	2 PLACES ± --- ± ---		APPROVED BY CBIXLER	DATE 2001/04/01	
▽=0	1 PLACE ± --- ± ---					
		0 PLACE ± --- ± ---				
		ANGULAR ±1/2°		MATERIAL NO.	DOCUMENT NO.	
		DRAFT WHERE APPLICABLE MUST REMAIN WITHIN DIMENSIONS	SEE TABLE			
			SIZE C	THIS DRAWING CONTAINS INFORMATION THAT IS PROPRIETARY TO MOLEX INCORPORATED AND SHOULD NOT BE USED WITHOUT WRITTEN PERMISSION		