

Excellent Integrated System Limited

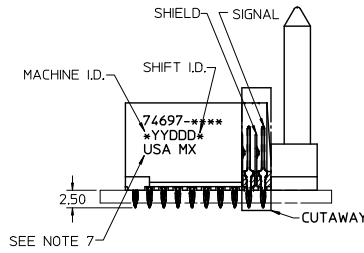
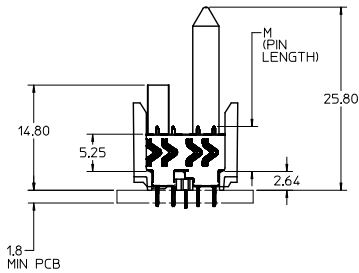
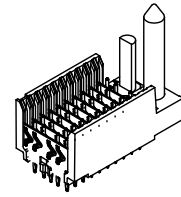
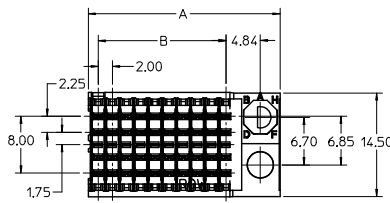
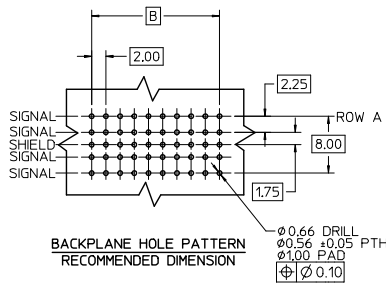
Stocking Distributor

Click to view price, real time Inventory, Delivery & Lifecycle Information:

[Molex Connector Corporation](#)
[0746971072](#)

For any questions, you can email us directly:

sales@integrated-circuit.com



NOTES:

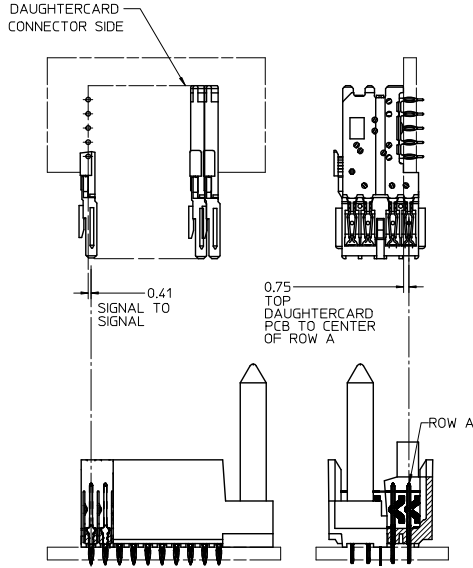
1. MATERIAL: HOUSING -LIQUID CRYSTAL POLYMER (LCP) GLASS-FILLED, UL 94 V-0, COLOR BLACK. SIGNAL & SHIELD -COPPER ALLOY.
2. FINISHES: SELECTIVE GOLD (Au) ON CONTACT AREA. SELECTIVE MATTE TIN (Sn) ON PCB TAILS. NICKEL (Ni) OVERALL.
3. THIS PART CONFORMS TO MOLEX PRODUCT SPECIFICATION PS-74031-999.
4. FOR MIXED CONTACT MATING LENGTHS CONSULT MOLEX FOR AVAILABILITY.
5. FOR SPECIFIC PART NUMBER AND MATING INFORMATION REFER TO SHEET 2.
6. PACKAGE PER: PK-74696-003.
7. EITHER MARK PART NUMBER AND DATE CODE APPROXIMATELY WHERE SHOWN OR PLACE LABEL ON THE TUBE.
8. MAPS (MOLEX ADVANCED PLATING SYSTEM).

THE PRIMARY CARTON WITH A LABEL STATING "ELV AND RoHS COMPLIANT" IS LEAD FREE. CARTONS WITHOUT THIS LABEL MAY CONTAIN LEAD.

LEAD FREE CONVERSION EC NO: UCP-2015-0687 DRAWN BY: 2012/08/24 CHECKED BY: 2012/11/27 APPROVED BY: 2012/12/14	QUALITY SYMBOLS ▽=0 ▽=0 ▽=0	GENERAL TOLERANCES (UNLESS SPECIFIED)		DIMENSION STYLE MM ONLY		SCALE 2.5:1	DESIGN UNITS METRIC	THIRD ANGLE PROJECTION					
		4 PLACES ±	3 PLACES ±	2 PLACES ±	1 PLACE ±	0 PLACE ±	ANGULAR ±1/2°	DRAFT WHERE APPLICABLE MUST REMAIN WITHIN DIMENSIONS	DRAWN BY: MOWANG CHECKED BY: NMARTIN APPROVED BY: CBIXLER	DATE: 2001/04/17 DATE: 2001/04/20 DATE: 2001/04/20	TITLE HSD SALES ASSEMBLY 5 ROW SHIELD END BACKPLANE	molex	MATERIAL NO. SEE SHEET 3

P/N 74697-()	---0-	---1-	---2-	---3-	---4-	---5-	---6-	---7-	---8-
KEYING PIN ORIENTATION									

74697-***



NUMBER OF COLUMNS/PLATING	CONTACT LOAD (PIN LENGTH)
05 = 05 COLUMN MATTE TIN (FORMERLY TIN/LEAD)	1 & 6 = 4.75
10 = 10 COLUMN MATTE TIN (FORMERLY TIN/LEAD)	2 & 7 = 6.25
25 = 25 COLUMN MATTE TIN (FORMERLY TIN/LEAD)	3 & 8 = 4.25
55 = 05 COLUMN MATTE TIN (MAPS)	4 & 9 = 5.15
60 = 10 COLUMN MATTE TIN (MAPS)	
75 = 25 COLUMN MATTE TIN (MAPS)	
95 = 05 COLUMN MATTE TIN	
90 = 10 COLUMN MATTE TIN	
85 = 25 COLUMN MATTE TIN	

LEAD FREE CONVERSION EC NO: UCP/2013-0687 DRAWING NO: 2012/08/24 CHK'D BY: CHIKO WOLFE APPR'D BY: APPRIS MILLER DATE: 2012/11/27 DATE: 2012/12/14	QUALITY SYMBOLS 	GENERAL TOLERANCES (UNLESS SPECIFIED)		DIMENSION STYLE MM ONLY		SCALE 2.5:1	DESIGN UNITS METRIC	THIRD ANGLE PROJECTION	
		4 PLACES ±	3 PLACES ±	2 PLACES ±	1 PLACE ±	0 PLACE ±	DRAWN BY MQWANG	DATE 2001/04/17	TITLE HSD SALES ASSEMBLY 5 ROW SHIELD END BACKPLANE
		4 PLACES ±	3 PLACES ±	2 PLACES ±	1 PLACE ±	0 PLACE ±	CHECKED BY NMARTIN	DATE 2001/04/20	
		4 PLACES ±	3 PLACES ±	2 PLACES ±	1 PLACE ±	0 PLACE ±	APPROVED BY CBIXLER	DATE 2001/04/20	
ANGULAR ±1/2°		MATERIAL NO. SEE SHEET 3		DOCUMENT NO. SD-74697-002		SHEET NO. 2 OF 3			
DRAFT WHERE APPLICABLE MUST REMAIN WITHIN DIMENSIONS				THIS DRAWING CONTAINS INFORMATION THAT IS PROPRIETARY TO MOLEX INCORPORATED AND SHOULD NOT BE USED WITHOUT WRITTEN PERMISSION					

PART NUMBER	COLUMN	NUMBER OF SIGNAL PIN	NUMBER OF SHIELD	A	B	M	GOLD THICKNESS MICROMETER	TIN THICKNESS MICROMETER
74697-60*1	10	40	10	27.00	18.00	4.75	0.25 MAPS	0.76-1.52
74697-90*1							0.76	
74697-90*6							1.27	
74697-75*1	25	100	25	57.00	48.00	4.75	0.25 MAPS	0.76-1.52
74697-85*1							0.76	
74697-85*6							1.27	
74697-55*2	5	20	5	17.00	8.00	6.25	0.25 MAPS	0.76-1.52
74697-90*2							1.27	
74697-90*7							0.25 MAPS	
74697-60*2	10	40	10	27.00	18.00	6.25	0.76	0.76-1.52
74697-90*7							1.27	
74697-75*2							0.25 MAPS	
74697-85*2	25	100	25	57.00	48.00	6.25	0.76	0.76-1.52
74697-85*7							1.27	
74697-85*7							0.25 MAPS	
74697-60*3	10	40	10	27.00	18.00	4.25	0.25 MAPS	0.76-1.52
74697-90*3							0.76	
74697-90*8							1.27	
74697-75*3	25	100	25	57.00	48.00	4.25	0.25 MAPS	0.76-1.52
74697-85*3							0.76	
74697-85*8							1.27	
74697-60*4	10	40	10	27.00	18.00	5.15	0.25 MAPS	0.76-1.52
74697-90*4							0.76	
74697-90*9							1.27	
74697-75*4	25	100	25	57.00	48.00	5.15	0.25 MAPS	0.76-1.52
74697-85*4							0.76	
74697-85*9							1.27	

LEAD FREE CHART

PART NUMBER	COLUMN	NUMBER OF SIGNAL PINS	NUMBER OF SHIELDS	A	B	M	Au (um) MIN THICKNESS	Sn (um) THICKNESS
74697-10*1	10	40	10	27.00	18.00	4.75	0.76	0.76-1.52
74697-10*6	25	100	25	57.00	48.00		1.27	
74697-25*1							0.76	
74697-25*6						1.27		
74697-05*7	5	20	5	17.00	8.00	6.25	1.27	0.76-1.52
74697-10*2	10	40	10	27.00	18.00		0.76	
74697-10*7							1.27	
74697-25*2						0.76		
74697-25*7	25	100	25	57.00	48.00	6.25	1.27	0.76-1.52
74697-25*7							0.76	
74697-10*3							1.27	
74697-10*8	10	40	10	27.00	18.00	4.25	0.76	0.76-1.52
74697-25*3	25	100	25	57.00	48.00		1.27	
74697-25*8							0.76	
74697-25*8						1.27		
74697-10*4	10	40	10	27.00	18.00	5.15	0.76	0.76-1.52
74697-10*9	25	100	25	57.00	48.00		1.27	
74697-25*4							0.76	
74697-25*9						1.27		

LEAD FREE (FORMERLY TIN/LEAD) CHART

SEE SHEET 1 EC NO: UCP2013-0687 2012/08/21 CHK:DWILFE 2012/11/27 APPR:SMILLER 2012/12/14	QUALITY SYMBOLS 	GENERAL TOLERANCES (UNLESS SPECIFIED)		DIMENSION STYLE		SCALE	DESIGN UNITS	THIRD ANGLE PROJECTION	
				MM ONLY		2.5:1	METRIC		
		4 PLACES ± --- ± --- 3 PLACES ± --- ± --- 2 PLACES ± --- ± --- 1 PLACE ± --- ± --- 0 PLACE ± ±		DRAWN BY: MOWANG DATE: 2001/04/17 CHECKED BY: NMARTIN DATE: 2001/04/20 APPROVED BY: CBIXLER DATE: 2001/04/20		TITLE: HSD SALES ASSEMBLY 5 ROW SHIELD END BACKPLANE 			
		ANGULAR ±1/2° DRAFT WHERE APPLICABLE MUST REMAIN WITHIN DIMENSIONS		SEE TABLE		DOCUMENT NO. SD-74697-002		SHEET NO. 3 OF 3	
THIS DRAWING CONTAINS INFORMATION THAT IS PROPRIETARY TO MOLEX INCORPORATED AND SHOULD NOT BE USED WITHOUT WRITTEN PERMISSION									