

Excellent Integrated System Limited

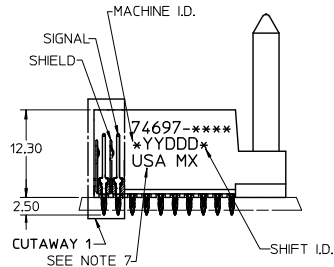
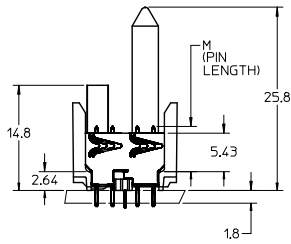
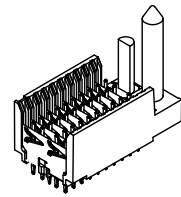
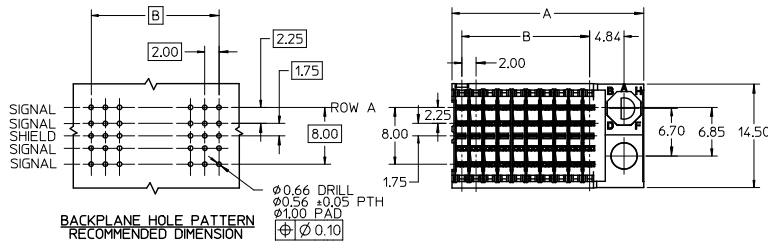
Stocking Distributor

Click to view price, real time Inventory, Delivery & Lifecycle Information:

[Molex Connector Corporation](#)
[0746971162](#)

For any questions, you can email us directly:

sales@integrated-circuit.com



NOTES:

1. MATERIAL: HOUSING -LIQUID CRYSTAL POLYMER (LCP) GLASS-FILLED. UL 94 V-0. COLOR: BLACK. SIGNAL & SHIELD -COPPER ALLOY.
2. FINISHES: SELECTIVE GOLD (Au) ON CONTACT AREA, SELECTIVE MATTE TIN (Sn) ON TAILS, NICKEL (Ni) OVERALL.
3. THIS PART CONFORMS TO MOLEX PRODUCT SPECIFICATION PS-74031-999.
4. FOR MIXED CONTACT MATING LENGTHS CONSULT MOLEX FOR AVAILABILITY.
5. FOR SPECIFIC PART NUMBER AND MATING INFORMATION REFER TO SHEET 2.
6. PACKAGE PER PK-74696-003.
7. EITHER MARK PART NUMBER AND DATE CODE APPROXIMATELY WHERE SHOWN OR PLACE LABEL ON THE TUBE.
8. THIS PART CONFORMS TO CLASS B REQUIREMENTS OF MOLEX COSMETIC SPECIFICATION PS-45499-002.
9. MAPS (MOLEX ADVANCED PLATING SYSTEM).

THE PRIMARY CARTON WITH A LABEL STATING "ELV AND RoHS COMPLIANT" IS LEAD FREE. CARTONS WITHOUT THIS LABEL MAY CONTAIN LEAD.

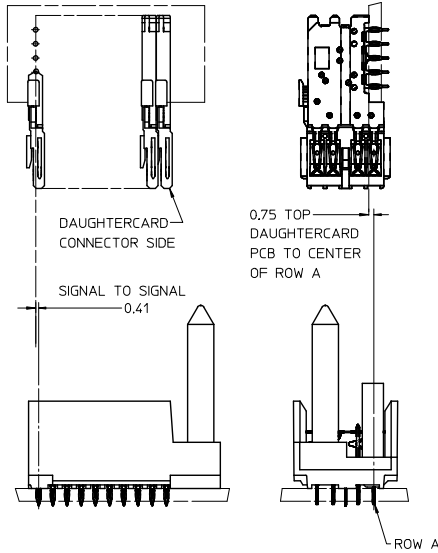
LEAD FREE CONVERSION EC NO: UCP2015-0687 DRAWINGS: 2012/08/21 CHK: KMOLFE 2012/11/21 APPR: SMILLER 2012/12/14 DESCRIPTION:	QUALITY SYMBOLS	GENERAL TOLERANCES (UNLESS SPECIFIED)	DIMENSION STYLE	SCALE	DESIGN UNITS	THIRD ANGLE PROJECTION	
	4 PLACES ± --- ± --- 3 PLACES ± --- ± --- 2 PLACES ± --- ± --- 1 PLACE ± --- ± --- 0 PLACE ± --- ± ---	mm INCH	MM ONLY	2.5:1	METRIC	DRAWN BY: MOWANG CHECKED BY: NMARTIN APPROVED BY: CBIXLER DATE: 2001/10/10 DATE: 2001/10/12 DATE: 2001/10/12	TITLE: HSD SALES ASSEMBLY ADVANCED MATE 5 ROW SHIELD END BACKPLANE molex
	ANGULAR ±1/2°	DRAFT WHERE APPLICABLE MUST REMAIN WITHIN DIMENSIONS	SEE SHEET 2	MATERIAL NO.	DOCUMENT NO.	SHEET NO.	
				SD-74697-003	1 OF 2		

P/N 74697-()	-**0*	-**1*	-**2*	-**3*	-**4*	-**5*	-**6*	-**7*	-**8*
KEYING PIN ORIENTATION									

74697-****

CONTACT LOAD
(PIN LENGTH)
1 & 6 = 4.75
2 & 7 = 6.25
3 & 8 = 4.25
4 & 9 = 5.15

NUMBER OF COLUMNS/PLATING
11 = 10 COLUMN MATTE TIN (FORMERLY TIN/LEAD)
26 = 25 COLUMN MATTE TIN (FORMERLY TIN/LEAD)
61 = 10 COLUMN MATTE TIN (MAPS)
76 = 25 COLUMN MATTE TIN (MAPS)
91 = 10 COLUMN MATTE TIN
86 = 25 COLUMN MATTE TIN



PART NUMBER	COLUMN	NUMBER OF SIGNAL PIN	NUMBER OF SHIELD	A	B	M	GOLD THICKNESS MICROMETER	TIN THICKNESS MICROMETER
74697-61*1	10	40	10	27.00	18.00	4.75	0.25 MAPS	0.76
74697-41*1							1.27	
74697-76*1	25	100	25	57.00	48.00	4.75	0.25 MAPS	0.76
74697-46*1							1.27	
74697-61*2	10	40	10	27.00	18.00	6.25	0.25 MAPS	0.76
74697-41*2							1.27	
74697-76*2	25	100	25	57.00	48.00	6.25	0.25 MAPS	0.76
74697-46*2							1.27	
74697-61*3	10	40	10	27.00	18.00	4.25	0.25 MAPS	0.76
74697-41*3							1.27	
74697-76*3	25	100	25	57.00	48.00	4.25	0.25 MAPS	0.76
74697-46*3							1.27	
74697-61*4	10	40	10	27.00	18.00	5.15	0.25 MAPS	0.76
74697-41*4							1.27	
74697-76*4	25	100	25	57.00	48.00	5.15	0.25 MAPS	0.76
74697-46*4							1.27	

SEE SHEET 1 EC NO: UCP2013-0687 DRAWN BY: ZHANG CHECKED BY: CHIKHOLIFE APPROVAL: MILLER REV	QUALITY SYMBOLS	GENERAL TOLERANCES (UNLESS SPECIFIED)	DIMENSION STYLE	SCALE	DESIGN UNITS	THIRD ANGLE PROJECTION
	 4 PLACES ±--- ±--- 3 PLACES ±--- ±--- 2 PLACES ±--- ±--- 1 PLACE ±--- ±--- 0 PLACE ± ±	mm INCH	MM ONLY	2.5:1	METRIC	HSD SALES ASSEMBLY ADVANCED MATE 5 ROW SHIELD END BACKPLANE
			DRAWN BY: MQWANG	DATE: 2001/10/10	TITLE	
			CHECKED BY: NMARTIN	DATE: 2001/10/12		
		ANGULAR ±1/2°	MATERIAL NO.	DOCUMENT NO.	SHEET NO.	
		DRAFT WHERE APPLICABLE MUST REMAIN WITHIN DIMENSIONS	SEE TABLE	SD-74697-003	2 OF 2	
THIS DRAWING CONTAINS INFORMATION THAT IS PROPRIETARY TO MOLEX INCORPORATED AND SHOULD NOT BE USED WITHOUT WRITTEN PERMISSION						