

Excellent Integrated System Limited

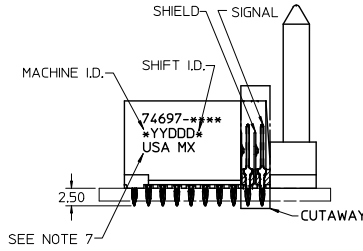
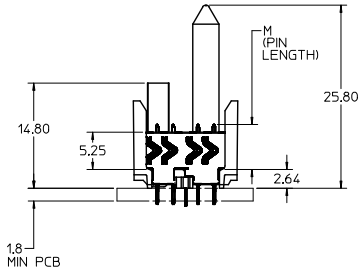
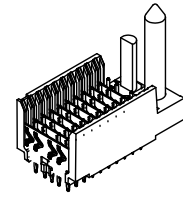
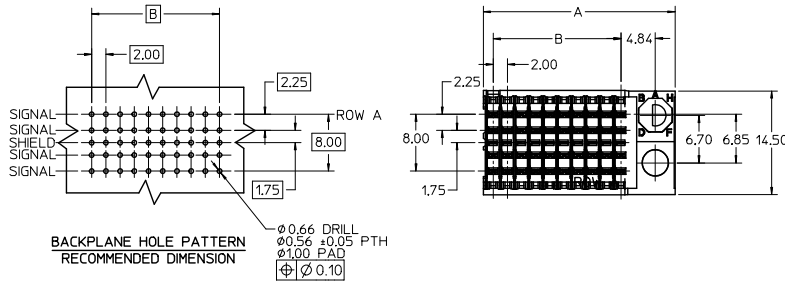
Stocking Distributor

Click to view price, real time Inventory, Delivery & Lifecycle Information:

[Molex Connector Corporation](#)
[0746972504](#)

For any questions, you can email us directly:

sales@integrated-circuit.com



NOTES:

1. MATERIAL: HOUSING -LIQUID CRYSTAL POLYMER (LCP) GLASS-FILLED, UL 94 V-0, COLOR BLACK. SIGNAL & SHIELD -COPPER ALLOY.
2. FINISHES: SELECTIVE GOLD (Au) ON CONTACT AREA. SELECTIVE MATTE TIN (Sn) ON PCB TAILS. NICKEL (Ni) OVERALL.
3. THIS PART CONFORMS TO MOLEX PRODUCT SPECIFICATION PS-74031-999.
4. FOR MIXED CONTACT MATING LENGTHS CONSULT MOLEX FOR AVAILABILITY.
5. FOR SPECIFIC PART NUMBER AND MATING INFORMATION REFER TO SHEET 2.
6. PACKAGE PER: PK-74696-003.
7. EITHER MARK PART NUMBER AND DATE CODE APPROXIMATELY WHERE SHOWN OR PLACE LABEL ON THE TUBE.
8. MAPS (MOLEX ADVANCED PLATING SYSTEM).

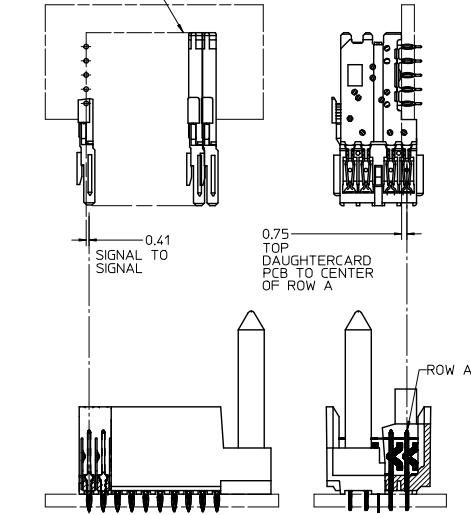
THE PRIMARY CARTON WITH A LABEL STATING "ELV AND RoHS COMPLIANT" IS LEAD FREE. CARTONS WITHOUT THIS LABEL MAY CONTAIN LEAD.

LEAD FREE CONVERSION EC NO: UCP-2015-0687 DRAWINGS: 2012/08/24 CHK: CHOMUFE 2012/11/27 APPR: SMILLER 2012/12/14	QUALITY SYMBOLS ▽=0 ▽=0 ▽=0	GENERAL TOLERANCES (UNLESS SPECIFIED)		DIMENSION STYLE MM ONLY		SCALE 2.5:1	DESIGN UNITS METRIC	THIRD ANGLE PROJECTION	
		4 PLACES ±	3 PLACES ±	2 PLACES ±	1 PLACE ±	0 PLACE ±	ANGULAR ±1/2°	DRAFT WHERE APPLICABLE MUST REMAIN WITHIN DIMENSIONS	SIZE C
				DRAWN BY: MOWANG DATE: 2001/04/17		CHECKED BY: NMARTIN DATE: 2001/04/20		APPROVED BY: CBIXLER DATE: 2001/04/20	
				MATERIAL NO.		DOCUMENT NO.		SHEET NO.	
				SEE SHEET 3		SD-74697-002		1 OF 3	
THIS DRAWING CONTAINS INFORMATION THAT IS PROPRIETARY TO MOLEX INCORPORATED AND SHOULD NOT BE USED WITHOUT WRITTEN PERMISSION									

P/N 74697-()	-**0-	-**1-	-**2-	-**3-	-**4-	-**5-	-**6-	-**7-	-**8-
KEYING PIN ORIENTATION									

74697-****

DAUGHTERCARD
CONNECTOR SIDE



NUMBER OF COLUMNS/PLATING

- 05 = 05 COLUMN MATTE TIN (FORMERLY TIN/LEAD)
- 10 = 10 COLUMN MATTE TIN (FORMERLY TIN/LEAD)
- 25 = 25 COLUMN MATTE TIN (FORMERLY TIN/LEAD)
- 55 = 05 COLUMN MATTE TIN (MAPS)
- 60 = 10 COLUMN MATTE TIN (MAPS)
- 75 = 25 COLUMN MATTE TIN (MAPS)
- 95 = 05 COLUMN MATTE TIN
- 90 = 10 COLUMN MATTE TIN
- 85 = 25 COLUMN MATTE TIN

CONTACT LOAD

- (PIN LENGTH)
- 1 & 6 = 4.75
- 2 & 7 = 6.25
- 3 & 8 = 4.25
- 4 & 9 = 5.15

LEAD FREE CONVERSION EC NO: UCP/2013-0687 DRAWING NO: 2012/08/24 CHK'D BY: CHIKO WOLFE APPR'D BY: APPRIS MILLER DATE: 2012/11/27 DATE: 2012/12/14	QUALITY SYMBOLS 	GENERAL TOLERANCES (UNLESS SPECIFIED)		DIMENSION STYLE MM ONLY		SCALE 2.5:1	DESIGN UNITS METRIC	THIRD ANGLE PROJECTION	
		4 PLACES ± --- ± --- 3 PLACES ± --- ± --- 2 PLACES ± --- ± --- 1 PLACE ± --- ± --- 0 PLACE ± --- ± ---	mm INCH	DRAWN BY MQWANG	DATE 2001/04/17	TITLE HSD SALES ASSEMBLY 5 ROW SHIELD END BACKPLANE			
		ANGULAR ± 1/2°		APPROVED BY CBIXLER	DATE 2001/04/20	DOCUMENT NO. SD-74697-002			
		DRAFT WHERE APPLICABLE MUST REMAIN WITHIN DIMENSIONS		SEE SHEET 3		MATERIAL NO.		SHEET NO. 2 OF 3	

PART NUMBER	COLUMN	NUMBER OF SIGNAL PIN	NUMBER OF SHIELD	A	B	M	GOLD THICKNESS MICROMETER	TIN THICKNESS MICROMETER
74697-60*1	10	40	10	27.00	18.00	4.75	0.25 MAPS	0.76-1.52
74697-90*1							0.76	
74697-90*6							1.27	
74697-75*1	25	100	25	57.00	48.00	4.75	0.25 MAPS	0.76-1.52
74697-85*1							0.76	
74697-85*6							1.27	
74697-55*2	5	20	5	17.00	8.00	6.25	0.25 MAPS	0.76-1.52
74697-95*7							1.27	
74697-60*2							0.25 MAPS	
74697-90*2	10	40	10	27.00	18.00	6.25	0.76	0.76-1.52
74697-90*7							1.27	
74697-75*2							0.25 MAPS	
74697-85*2	25	100	25	57.00	48.00	6.25	0.76	0.76-1.52
74697-85*7							1.27	
74697-60*3							0.25 MAPS	
74697-90*3	10	40	10	27.00	18.00	4.25	0.76	0.76-1.52
74697-90*8							1.27	
74697-75*3							0.25 MAPS	
74697-85*3	25	100	25	57.00	48.00	4.25	0.76	0.76-1.52
74697-85*8							1.27	
74697-60*4							0.25 MAPS	
74697-90*4	10	40	10	27.00	18.00	5.15	0.76	0.76-1.52
74697-90*9							1.27	
74697-75*4							0.25 MAPS	
74697-85*4	25	100	25	57.00	48.00	5.15	0.76	0.76-1.52
74697-85*9							1.27	
74697-60*5							0.25 MAPS	

LEAD FREE CHART

PART NUMBER	COLUMN	NUMBER OF SIGNAL PINS	NUMBER OF SHIELDS	A	B	M	Au (um) MIN THICKNESS	Sn (um) THICKNESS
74697-10*1	10	40	10	27.00	18.00	4.75	0.76	0.76-1.52
74697-10*6	25	100	25	57.00	48.00		1.27	
74697-25*1							0.76	
74697-25*6						1.27		
74697-05*7	5	20	5	17.00	8.00	6.25	1.27	0.76-1.52
74697-10*2	10	40	10	27.00	18.00		0.76	
74697-10*7							1.27	
74697-25*2						0.76		
74697-25*7	25	100	25	57.00	48.00	6.25	1.27	0.76-1.52
74697-10*3							0.76	
74697-10*8							1.27	
74697-25*3	25	100	25	57.00	48.00	4.25	0.76	0.76-1.52
74697-25*8							1.27	
74697-10*4							0.76	
74697-10*9	10	40	10	27.00	18.00	5.15	1.27	0.76-1.52
74697-25*4							0.76	
74697-25*9							1.27	

LEAD FREE (FORMERLY TIN/LEAD) CHART

SEE SHEET 1 EC NO: UCP2013-0687 2012/08/21 CHK:DWILFE 2012/11/27 APPR:SMILLER 2012/12/14	QUALITY SYMBOLS ∇=0 ∇=0 ∇=0	GENERAL TOLERANCES (UNLESS SPECIFIED)		DIMENSION STYLE MM ONLY		SCALE 2.5:1	DESIGN UNITS METRIC	THIRD ANGLE PROJECTION	
		4 PLACES ± --- ± --- 3 PLACES ± --- ± --- 2 PLACES ± --- ± --- 1 PLACE ± --- ± --- 0 PLACE ± --- ± ---	mm INCH ± --- ± --- ± --- ± --- ± --- ± --- ± --- ± ---	DRAWN BY MOWANG	DATE 2001/04/17	TITLE HSD SALES ASSEMBLY 5 ROW SHIELD END BACKPLANE			
		ANGULAR ±1/2°		CHECKED BY NMARTIN	DATE 2001/04/20	molex			
		DRAFT WHERE APPLICABLE MUST REMAIN WITHIN DIMENSIONS		APPROVED BY CBIXLER	DATE 2001/04/20	MATERIAL NO. SEE TABLE	DOCUMENT NO. SD-74697-002	SHEET NO. 3 OF 3	