

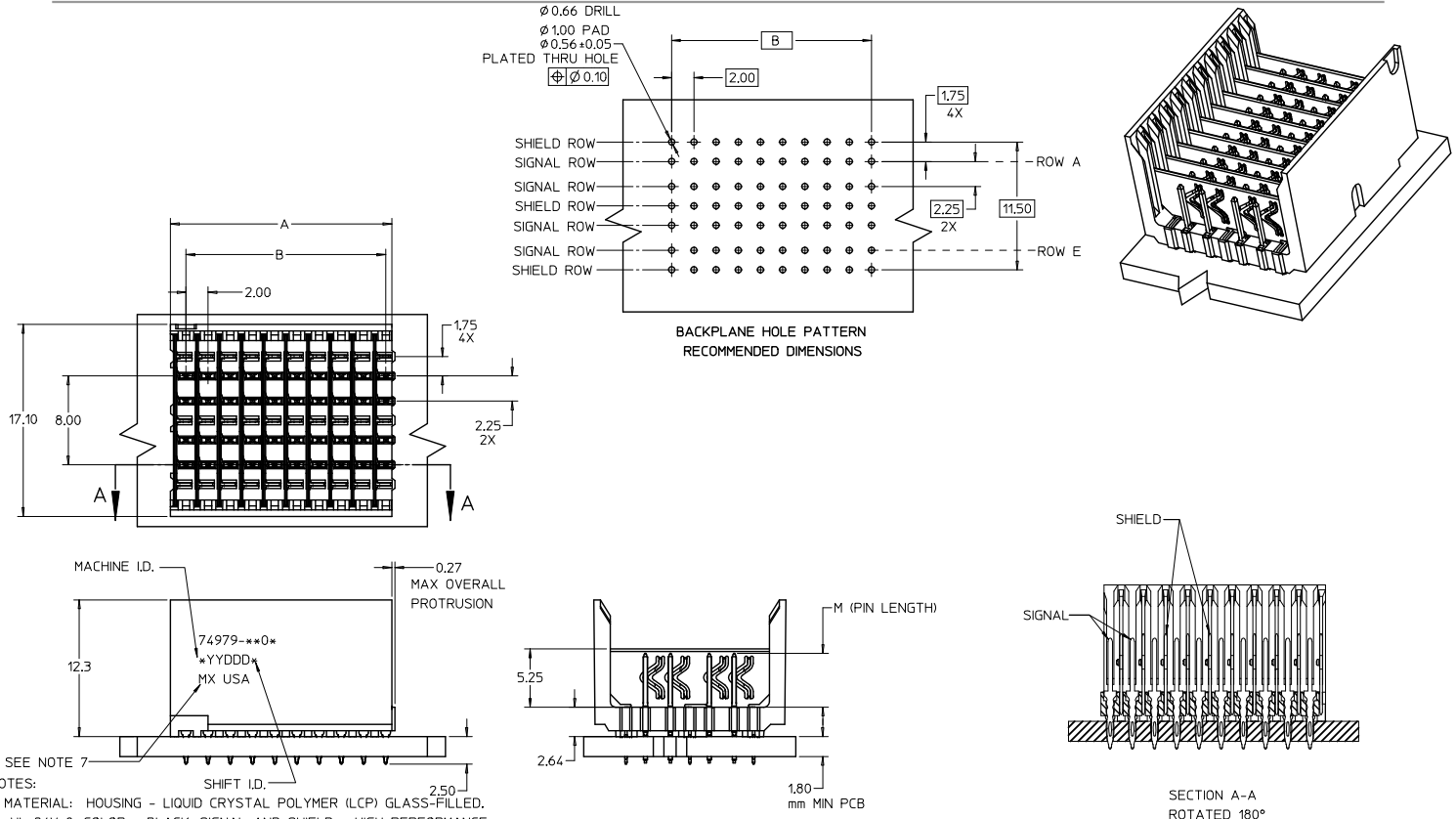
Excellent Integrated System Limited

Stocking Distributor

Click to view price, real time Inventory, Delivery & Lifecycle Information:

[Molex Connector Corporation](#)
[0749791004](#)

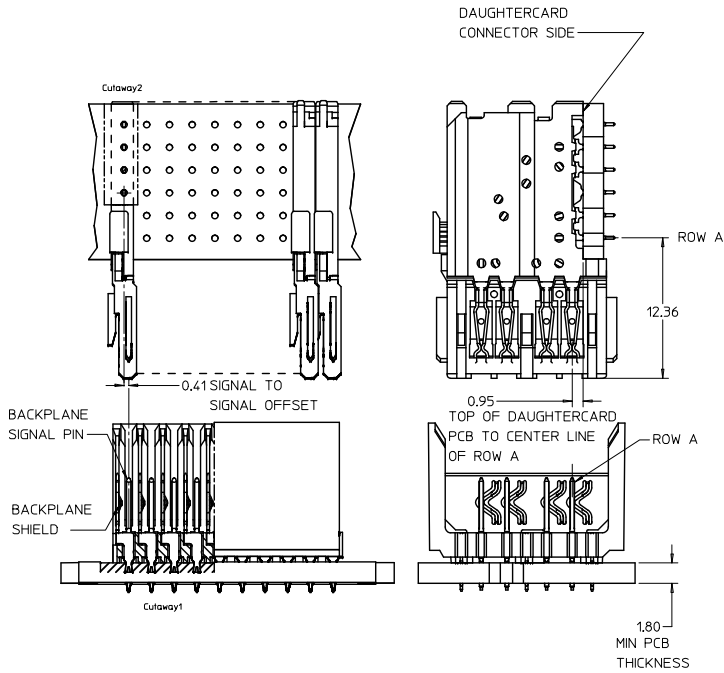
For any questions, you can email us directly:
sales@integrated-circuit.com



NOTES:
 1. MATERIAL: HOUSING - LIQUID CRYSTAL POLYMER (LCP) GLASS-FILLED, UL 94V-0, COLOR - BLACK, SIGNAL AND SHIELD - HIGH PERFORMANCE COPPER ALLOY.
 2. FINISHES:
 CONTACT AREA: SELECTIVE GOLD (Au)
 PCB TAILS: SELECTIVE TIN/LEAD (Sn/Pb) OR SELECTIVE MATTE TIN (Sn) NICKEL (Ni) OVERALL.
 3. THIS PART CONFORMS TO MOLEX PRODUCT SPECIFICATION PS-74031-999.
 4. FOR MIXED CONTACT MATING LENGTHS CONSULT MOLEX FOR AVAILABILITY.
 5. FOR SPECIFIC PART NUMBER AND MATING INFORMATION REFER TO SHEET 2.
 6. PACKAGE PER PK-74057-003 FOR 10 & 25 COLUMN, PACKAGE PER PK-70873-0934 FOR THE 9 COLUMN CONNECTOR.
 7. EITHER MARK PART NUMBER AND DATE CODE APPROXIMATELY WHERE SHOWN OR PLACE LABEL ON TUBE.
 8. MAPS (MOLEX ADVANCED PLATING SYSTEM).

THE PRIMARY CARTON WITH A LABEL STATING "ELV AND RoHS COMPLIANT" IS LEAD FREE. CARTONS WITHOUT THIS LABEL MAY CONTAIN LEAD.

LEAD FREE CONVERSION EC NO: UCP2015-0687 DRW/MOL/PE 2012/08/24 CHK/SYANG 2012/08/24 APPR/SMILLER 2012/12/14 DESCRIPTION REV	QUALITY SYMBOLS	GENERAL TOLERANCES (UNLESS SPECIFIED)	DIMENSION STYLE	SCALE	DESIGN UNITS	THIRD ANGLE PROJECTION
	▽=0 ▽=0.05 ▽=0.1	4 PLACES ± --- ± --- 3 PLACES ± --- ± --- 2 PLACES ± 0.25 ± --- 1 PLACE ± 0.38 ± --- 0 PLACE ± ±	MM ONLY	4:1	METRIC	☉ THIRD ANGLE PROJECTION
	DRAWN BY: NMARTIN CHECKED BY: SREED APPROVED BY: CBIXLER	DATE: 2002/05/03 DATE: 2002/05/03 DATE: 2002/05/03	TITLE	HSD 6 ROW OPEN END BACKPLANE SALES DRAWING molex		
	ANGULAR ± --- ° DRAFT WHERE APPLICABLE MUST REMAIN WITHIN DIMENSIONS	SEE TABLE SIZE C	MATERIAL NO. DOCUMENT NO.	SD-74979-010 SHEET NO. 1 OF 2		



PART NUMBER	COLUMN	NUMBER OF SIGNAL PIN	NUMBER OF SHIELD	A	B	M	GOLD THICKNESS MICROMETER	TIN THICKNESS MICROMETER
74979-6901							0.25 MAPS	
74979-0901							0.76	
74979-0906							1.27	
74979-9901	9	36	9	18.00	16.00		0.76	
74979-9906							1.27	
74979-6001							0.25 MAPS	
74979-1001							0.76	
74979-1006	10	40	10	20.00	18.00	4.75	1.27	
74979-9001							0.76	
74979-9006							1.27	
74979-7001							0.25 MAPS	
74979-2501							0.76	
74979-2506	25	100	10	50.00	48.00		1.27	
74979-8501							0.76	
74979-8506							1.27	
74979-6902							0.25 MAPS	
74979-0902	9	36	9	18.00	16.00		0.76	
74979-0907							1.27	
74979-9902							0.76	
74979-9907							1.27	
74979-6002							0.25 MAPS	
74979-1002	10	40	10	20.00	18.00	6.25	0.76	
74979-1007							1.27	
74979-9002							0.76	
74979-9007							1.27	
74979-7003							0.25 MAPS	
74979-2503	25	100	10	50.00	48.00		0.76	
74979-2508							1.27	
74979-8503							0.76	
74979-8508							1.27	0.76-152
74979-6903							0.25 MAPS	
74979-0903	9	36	9	18.00	16.00		0.76	
74979-0908							1.27	
74979-9903							0.76	
74979-9908							1.27	
74979-6004							0.25 MAPS	
74979-1004	10	40	10	20.00	18.00	4.25	0.76	
74979-1009							1.27	
74979-9004							0.76	
74979-9009							1.27	
74979-7004							0.25 MAPS	
74979-2504	25	100	10	50.00	48.00		0.76	
74979-2509							1.27	
74979-8504							0.76	
74979-8509							1.27	
74979-6903							0.25 MAPS	
74979-0903	9	36	9	18.00	16.00		0.76	
74979-0908							1.27	
74979-9903							0.76	
74979-9908							1.27	
74979-6004							0.25 MAPS	
74979-1004	10	40	10	20.00	18.00	5.15	0.76	
74979-1009							1.27	
74979-9004							0.76	
74979-9009							1.27	
74979-7004							0.25 MAPS	
74979-2504	25	100	10	50.00	48.00		0.76	
74979-2509							1.27	
74979-8504							0.76	
74979-8509							1.27	

MATERIAL NUMBER ASSIGNMENT

74979-*** **
SEE TABLE

- NUMBER OF COLUMNS/PLATING
- 10 = 10 COLUMN TIN (FORMERLY TIN LEAD)
 - 25 = 25 COLUMN TIN (FORMERLY TIN LEAD)
 - 09 = 9 COLUMN TIN (FORMERLY TIN LEAD)
 - 90 = 10 COLUMN MATTE TIN
 - 85 = 25 COLUMN MATTE TIN
 - 99 = 9 COLUMN MATTE TIN
 - 60 = 10 COLUMN MATTE TIN (MAPS)
 - 70 = 25 COLUMN MATTE TIN (MAPS)
 - 69 = 9 COLUMN MATTE TIN (MAPS)

SEE SHEET 1 EC NO: UCF2013-0687 DRAWN BY: DRWINGWOLFE CHKD BY: CHKOSYANG APPR: SMILLER 2012/08/24 2012/08/24 2012/12/14	QUALITY SYMBOLS ∇=0 ∇=0 ∇=0	GENERAL TOLERANCES (UNLESS SPECIFIED) mm INCH 4 PLACES ± --- ± --- 3 PLACES ± --- ± --- 2 PLACES ± 0.25 ± --- 1 PLACE ± 0.38 ± --- 0 PLACE ± ±	DIMENSION STYLE MM ONLY	SCALE 4:1	DESIGN UNITS METRIC	THIRD ANGLE PROJECTION	
		DRAWN BY: NMARTIN DATE: 2002/05/03	CHECKED BY: SREED DATE: 2002/05/03	APPROVED BY: CBIXLER DATE: 2002/05/03	TITLE HSD 6 ROW OPEN END BACKPLANE SALES DRAWING	molex	SHEET NO. 2 OF 2
		MATERIAL NO. SEE TABLE	DOCUMENT NO. SD-74979-010				
		DRAFT WHERE APPLICABLE MUST REMAIN WITHIN DIMENSIONS					