



Distributor of Molex Connector Corporation: Excellent Integrated System Limited
Datasheet of 0751351000 - Connector Plug DMS-59 59 Position Free Hanging (In-Line)

Contact us: sales@integrated-circuit.com Website: www.integrated-circuit.com

Excellent Integrated System Limited

Stocking Distributor

Click to view price, real time Inventory, Delivery & Lifecycle Information:

[Molex Connector Corporation](#)
[0751351000](#)

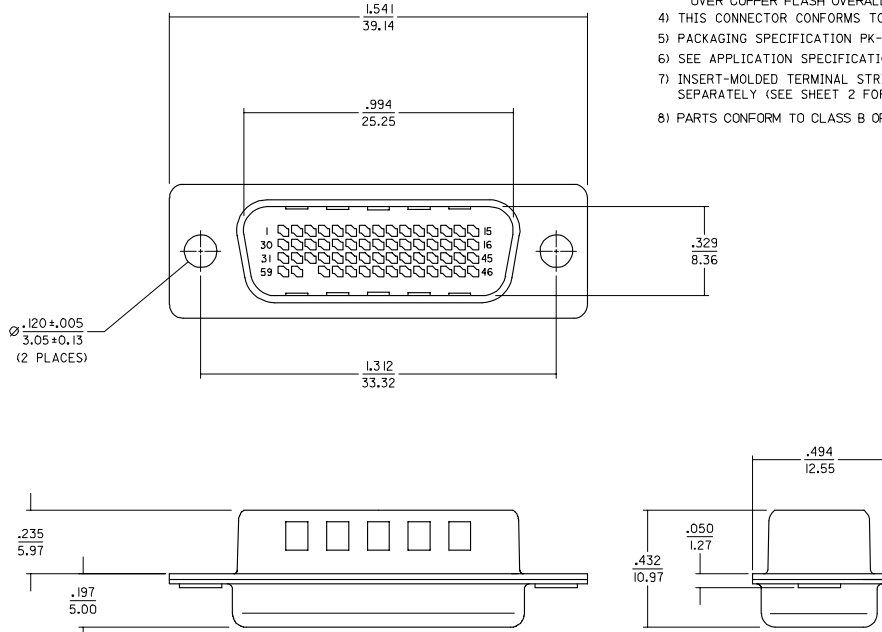
For any questions, you can email us directly:

sales@integrated-circuit.com

ITEM NUMBER	PRODUCT DESCRIPTION	FRONT SHELL PLATING
75135-1000	DMS-59 I/O PLUG CONNECTOR	BRIGHT TIN
75135-1009	DMS-59 I/O PLUG CONNECTOR	BRIGHT NICKEL

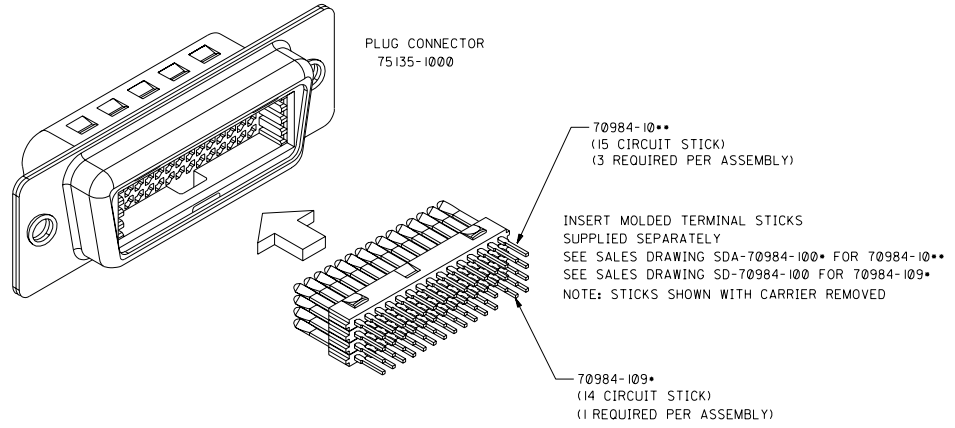
NOTES:

- 1) PLASTIC HOUSING:
GLASS FILLED LCP (LIQUID CRYSTAL POLYMER), UL94 V-0, COLOR: NATURAL.
- 2) FRONT SHELL:
DEEP DRAWN STEEL;
PLATING: SEE TABLE
BRIGHT TIN: 150-250 MICRONS BRIGHT TIN OVER 50-150 MICRONS NICKEL OVER COPPER FLASH OVERALL (OPTIONAL).
BRIGHT NICKEL: 100-175 MICRONS BRIGHT NICKEL OVER 50 MICRONS MAXIMUM COPPER OVERALL.
- 3) BACK SHELL:
DEEP DRAWN STEEL;
PLATING: 150-250 MICRONS BRIGHT TIN OVER 50-150 MICRONS NICKEL OVER COPPER FLASH OVERALL (OPTIONAL).
- 4) THIS CONNECTOR CONFORMS TO PRODUCT SPECIFICATION PS-75134-001.
- 5) PACKAGING SPECIFICATION PK-70873-0236 APPLIES.
- 6) SEE APPLICATION SPECIFICATION PS-70929 FOR ASSEMBLY AND TERMINATION DETAILS.
- 7) INSERT-MOLDED TERMINAL STRIP ASSEMBLIES ARE SUPPLIED SEPARATELY (SEE SHEET 2 FOR ORDERING INFORMATION).
- 8) PARTS CONFORM TO CLASS B OF COSMETIC SPECIFICATION PS-45499-002.



2	A
1	D
SHT	REV

ADD COSMETIC SPEC IEC NO: UCP2007-2622 DRW: DMORGAN 2007/09/13 CHK: KDRS/BARRA 2007/09/13 APPR: SMILLER 2007/09/13 REV:	QUALITY SYMBOLS ▽=0 ▽=0	GENERAL TOLERANCES (UNLESS SPECIFIED) <table border="1"> <thead> <tr> <th></th> <th>mm</th> <th>INCH</th> </tr> </thead> <tbody> <tr> <td>4 PLACES</td> <td>± .010</td> <td>± .0004</td> </tr> <tr> <td>3 PLACES</td> <td>± .010</td> <td>± .0004</td> </tr> <tr> <td>2 PLACES</td> <td>± 0.25</td> <td>± .010</td> </tr> <tr> <td>1 PLACE</td> <td>± 0.38</td> <td>± .015</td> </tr> </tbody> </table>		mm	INCH	4 PLACES	± .010	± .0004	3 PLACES	± .010	± .0004	2 PLACES	± 0.25	± .010	1 PLACE	± 0.38	± .015	DIMENSION STYLE IN/MM SCALE 4:1 DESIGN UNITS INCH THIRD ANGLE PROJECTION	DRAWN BY DMORGAN DATE 2002/10/17 CHECKED BY BBARKER DATE 2002/10/17 APPROVED BY SMILLER DATE 2002/10/17	TITLE SALES DMS-59 I/O PLUG LFH .050/1.27 PITCH 59 CKT CABLE ASSY MATERIAL NO. MOLEX INCORPORATED DOCUMENT NO. SD-75135-001	SHEET NO. 1 OF 2
		mm	INCH																		
	4 PLACES	± .010	± .0004																		
	3 PLACES	± .010	± .0004																		
2 PLACES	± 0.25	± .010																			
1 PLACE	± 0.38	± .015																			
DRAFT WHERE APPLICABLE MUST REMAIN WITHIN DIMENSIONS		SIZE C	THIS DRAWING CONTAINS INFORMATION THAT IS PROPRIETARY TO MOLEX INCORPORATED AND SHOULD NOT BE USED WITHOUT WRITTEN PERMISSION																		
IEC NO: UCP2007-2622 DRW: DMORGAN 2007/09/13 CHK: KDRS/BARRA 2007/09/13 APPR: SMILLER 2007/09/13 REV:																					
ADD COSMETIC SPEC IEC NO: UCP2007-2622 DRW: DMORGAN 2007/09/13 CHK: KDRS/BARRA 2007/09/13 APPR: SMILLER 2007/09/13 REV:																					



INITIAL RELEASE EC NO. UCP2003-0543 DRWN:DMORGAN 02/10/17 CHK: BBARKER 02/10/17 APPR: SMILLER 02/10/17	DESCRIPTION MAJOR CRITICAL 1/2	GENERAL TOLERANCES: (UNLESS SPECIFIED)		SCALE: 1:1	DESIGN UNITS: <input type="checkbox"/> mm <input checked="" type="checkbox"/> INCH	DIMENSIONS: <input type="checkbox"/> mm <input checked="" type="checkbox"/> INCH <input type="checkbox"/> mm ONLY	SHT: 2 REV: 5
		4 PLACES ±0.15 ±.010	DRAWN BY & DATE DMORGAN 02/10/17	TITLE: SALES DMS-59 I/O PLUG LFH .050/1.27 PITCH 59 CKT CABLE ASSY			
		3 PLACES ±0.25 ±.015	CHECKED BY & DATE BBARKER 02/10/17	MOLEX INCORPORATED			
		2 PLACES ±0.38 ±.020	APPROVED BY & DATE SMILLER 02/10/17	MATERIAL NO. SEE CHART	DRAWING NO. SD-75135-001	SHEET NO. 2	
1 PLACE ±0.38 ±.020	ANGLAR: ±1/2°	DRAFT WHERE APPLICABLE MUST REMAIN WITHIN DIMENSIONS		CAD FILENAME:		THIS DRAWING CONTAINS INFORMATION THAT IS PROPRIETARY TO MOLEX INCORPORATED AND SHOULD NOT BE USED WITHOUT WRITTEN PERMISSION.	