

Excellent Integrated System Limited

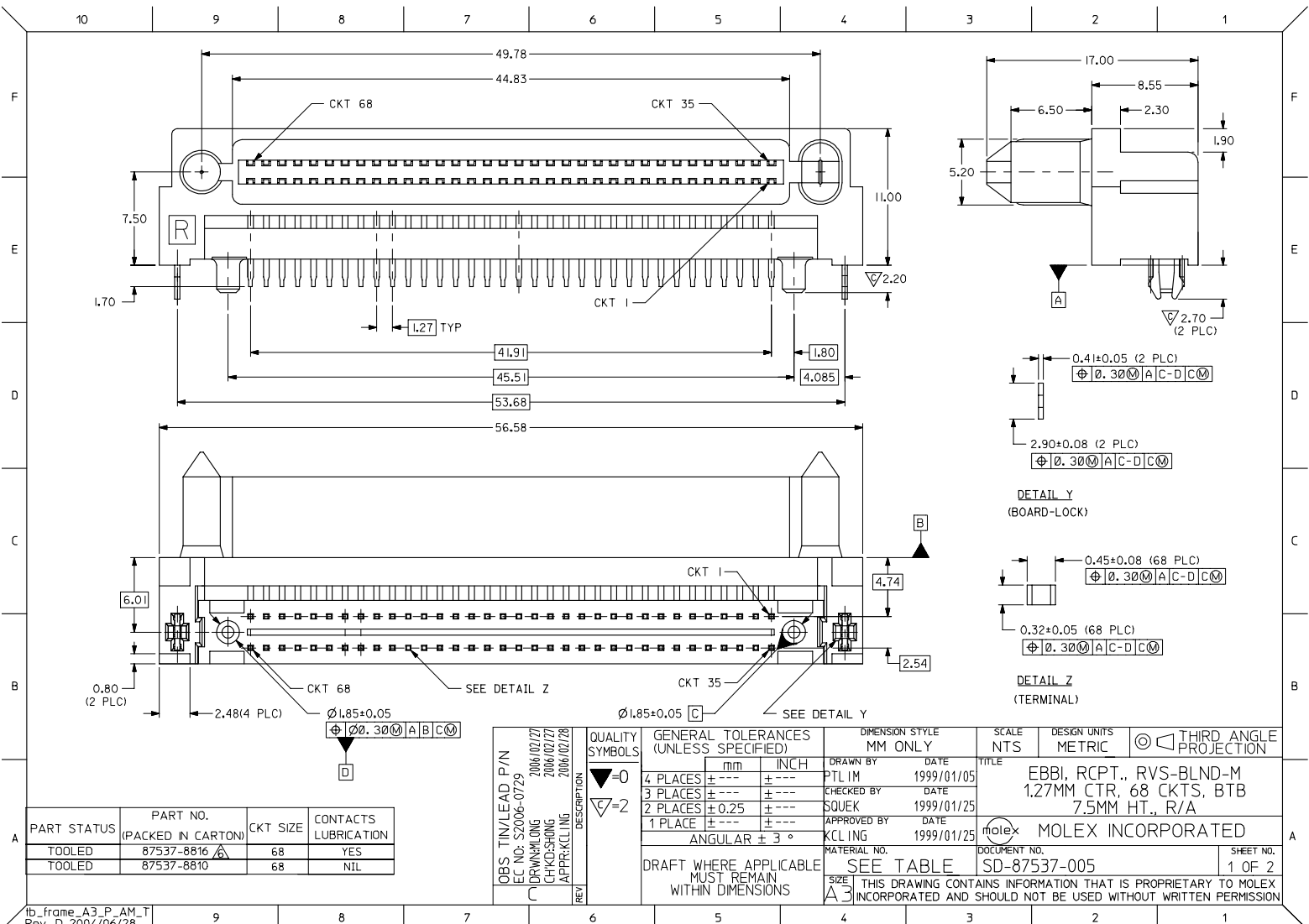
Stocking Distributor

Click to view price, real time Inventory, Delivery & Lifecycle Information:

[Molex Connector Corporation](#)
[0875378816](#)

For any questions, you can email us directly:

sales@integrated-circuit.com



PART STATUS	PART NO. (PACKED IN CARTON)	CKT SIZE	CONTACTS LUBRICATION
TOOLED	87537-8816	68	YES
TOOLED	87537-8810	68	NIL

QTY	DESCRIPTION	DATE
1	APPROVAL	2006/07/28
1	CHKD	2006/07/27
1	DRWING	2006/07/27
1	DESIGN	2006/07/27
1	P/IN	2006/07/27

QUALITY SYMBOLS	GENERAL TOLERANCES (UNLESS SPECIFIED)	
	mm	INCH
▽=0	4 PLACES ± .10	± .004
▽=1	3 PLACES ± .15	± .006
▽=2	2 PLACES ± .25	± .010
	1 PLACE ± .50	± .020
	ANGULAR ± 3°	

DATE	1999/01/05	SCALE	1:1
DRAWN BY	PTL IM	DESIGN UNITS	METRIC
CHECKED BY	SQUEK	THIRD ANGLE PROJECTION	
APPROVED BY	KCL ING		
MATERIAL NO.	SEE TABLE		
DOCUMENT NO.	SD-87537-005		
SHEET NO.	1 OF 2		

ib_frame_A3_P_AM_T
Rev. D 2004/06/26

10 9 8 7 6 5 4 3 2 1

F

E

D

C

B

A

F

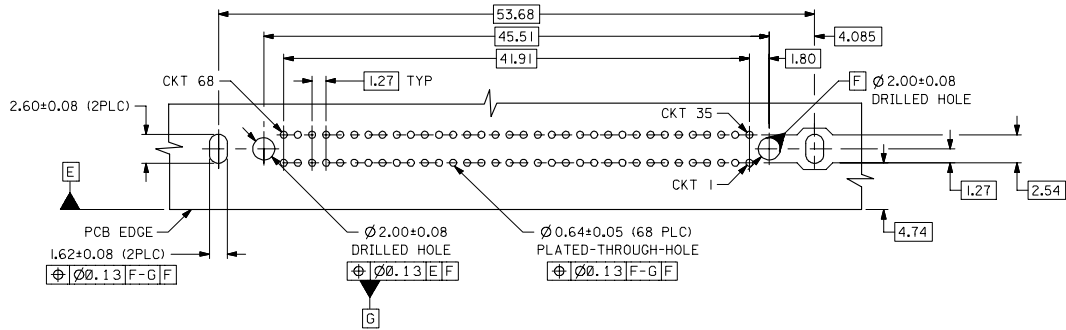
E

D

C

B

A



RECOMMENDED PC BOARD LAYOUT \triangle
COMPONENT SIDE

NOTES:

- 1 MATERIALS:
HOUSING - HIGH TEMPERATURE THERMOPLASTIC, GLASS FILLED,
UL94V-0, COLOR : BLACK
TERMINAL - COPPER ALLOY
- 2 PLATING:
0.76µM MIN. GOLD IN SELECTIVE CONTACT AREA AND
2.54µM MIN. TIN IN SOLDER TAIL AREA, BOTH
OVER 1.27µM MIN. NICKEL.
3. PRODUCT SPECIFICATION : PS-87537-0001
- \triangle RECOMMENDED P.C. BOARD THICKNESS IS 1.20±/-0.05MM.
- 5 CIRCUIT *58 TO BE RECESSED 0.50mm BEHIND
ALL OTHER CONTACTS.
- \triangle PART IS LUBRICATED AT TERMINAL CONTACTS TO MINIMISE
UNMATE FORCE.

OBS TIN/LEAD P/N EC NO: S2006-0729 DRAWN/CHKD/APPR: M/LONG/SHONG/KLING 2006/07/27 2006/07/27 2006/07/28	QUALITY SYMBOLS ▽=0 ▽=0	GENERAL TOLERANCES (UNLESS SPECIFIED)		DIMENSION STYLE MM ONLY		SCALE NTS	DESIGN UNITS METRIC	THIRD ANGLE PROJECTION	
		4 PLACES ± --- ± ---	3 PLACES ± --- ± ---	2 PLACES ± 0.25 ± ---	1 PLACE ± --- ± ---	ANGULAR ± 3 °	DRAWN BY PTL IM	DATE 1999/01/05	TITLE EBB1, RCPT., RVS-BLND-M 1.27MM CTR, 68 CKTS, BTB 7.5MM HT., R/A
DRAFT WHERE APPLICABLE MUST REMAIN WITHIN DIMENSIONS		MATERIAL NO. SEE TABLE		APPROVED BY KCL ING		DATE 1999/01/25		DOCUMENT NO. SD-87537-005	
SIZE A3		THIS DRAWING CONTAINS INFORMATION THAT IS PROPRIETARY TO MOLEX INCORPORATED AND SHOULD NOT BE USED WITHOUT WRITTEN PERMISSION							
								SHEET NO. 2 OF 2	

9 8 7 6 5 4 3 2 1