

## Excellent Integrated System Limited

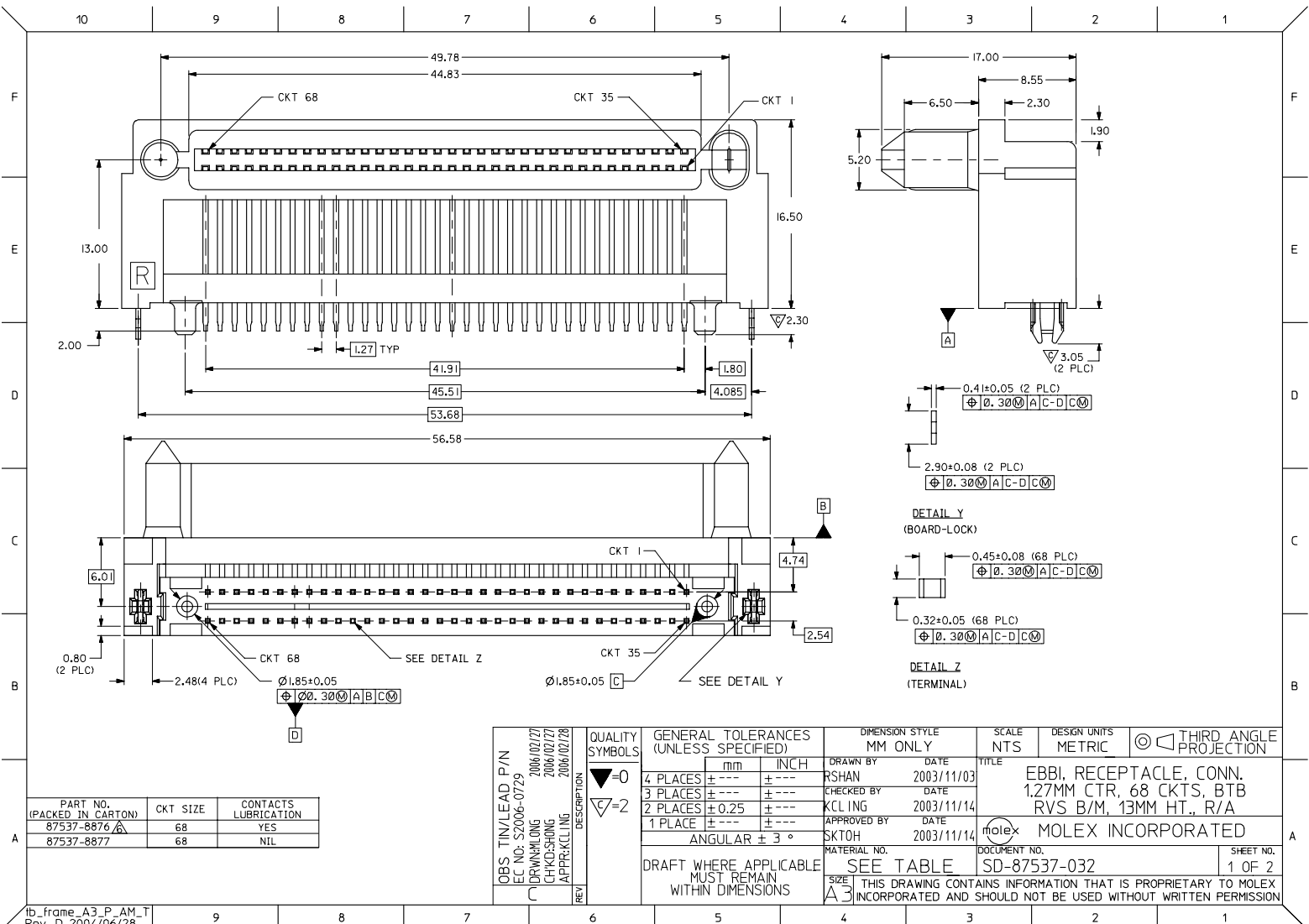
Stocking Distributor

Click to view price, real time Inventory, Delivery & Lifecycle Information:

[Molex Connector Corporation](#)  
[0875378876](#)

For any questions, you can email us directly:

[sales@integrated-circuit.com](mailto:sales@integrated-circuit.com)

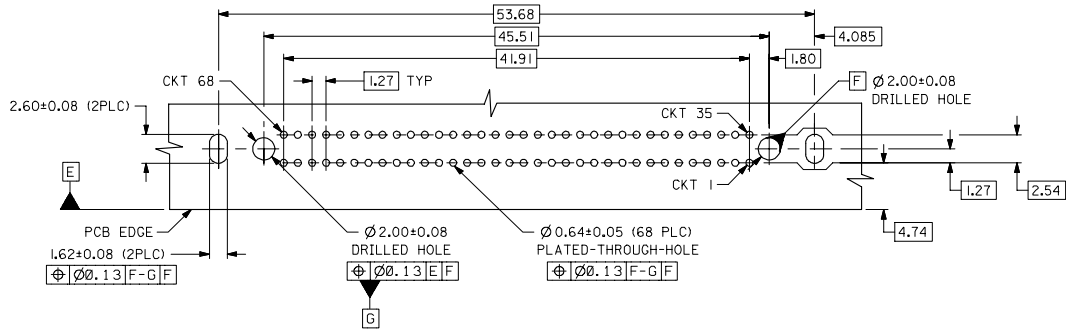


PART NO. (PACKED IN CARTON)	CKT SIZE	CONTACTS LUBRICATION
87537-8876	68	YES
87537-8877	68	NIL

OBS TIN/LEAD P/N EC NO: S2006-0729 DRAWN BY: 2006/07/27 CHKD: 2006/07/27 APPR: 2006/07/28	QUALITY SYMBOLS ▽=0 ▽=2	GENERAL TOLERANCES (UNLESS SPECIFIED)		DIMENSION STYLE MM ONLY	SCALE NTS	DESIGN UNITS METRIC	THIRD ANGLE PROJECTION
		4 PLACES ± --- ± --- 3 PLACES ± --- ± --- 2 PLACES ± 0.25 ± --- 1 PLACE ± --- ± --- ANGULAR ± 3°	DRAWN BY: RSHAN CHECKED BY: KCLING APPROVED BY: SKTOH DATE: 2003/11/03 DATE: 2003/11/14 DATE: 2003/11/14	TITLE EBBI, RECEPTACLE, CONN. 1.27MM CTR, 68 CKTS, BTB RVS B/M, 13MM HT., R/A	MATERIAL NO. SEE TABLE	DOCUMENT NO. SD-87537-032	SHEET NO. 1 OF 2
DRAFT WHERE APPLICABLE MUST REMAIN WITHIN DIMENSIONS		THIS DRAWING CONTAINS INFORMATION THAT IS PROPRIETARY TO MOLEX INCORPORATED AND SHOULD NOT BE USED WITHOUT WRITTEN PERMISSION					

10 9 8 7 6 5 4 3 2 1

F  
E  
D  
C  
B  
A



RECOMMENDED PC BOARD LAYOUT  $\triangle$   
COMPONENT SIDE

NOTES:

- MATERIALS:  
HOUSING - HIGH TEMPERATURE THERMOPLASTIC, GLASS FILLED, UL94V-0, COLOR : BLACK  
TERMINAL - COPPER ALLOY
- PLATING:  
0.76μM MIN. GOLD IN SELECTIVE CONTACT AREA AND 2.54μM MIN. TIN IN SOLDER TAIL AREA, BOTH OVER 1.27μM MIN. NICKEL.
- PRODUCT SPECIFICATION : PS-87537-0001
- $\triangle$  RECOMMENDED P.C. BOARD THICKNESS IS 1.57±/-0.05MM.
- CIRCUIT \*58 TO BE RECESSED 0.50mm BEHIND ALL OTHER CONTACTS.
- $\triangle$  PART IS LUBRICATED AT TERMINAL CONTACTS TO MINIMISE UNMATE FORCE.

OBS TIN/LEAD P/N EC NO: S2006-0729 2006/07/27 2006/07/27 2006/07/28	DESCRIPTION DRIVING LONG CHKD: SHONG APPROV: K LING	QUALITY SYMBOLS $\nabla=0$ $\nabla=0$	GENERAL TOLERANCES (UNLESS SPECIFIED)		DIMENSION STYLE MM ONLY		SCALE NTS	DESIGN UNITS METRIC	THIRD ANGLE PROJECTION			
			mm	INCH	DRAWN BY RSHAN	DATE 2003/11/03	TITLE EBB1, RECEPTACLE, CONN. 1.27MM CTR, 68 CKTS, BTB RVS B/M, 13MM HT., R/A					
		4 PLACES ± --- ± ---	3 PLACES ± --- ± ---	2 PLACES ± 0.25 ± ---	1 PLACE ± --- ± ---	CHECKED BY KCL ING	DATE 2003/11/14					
		ANGULAR ± 3 °				APPROVED BY SKTOH	DATE 2003/11/14					
DRAFT WHERE APPLICABLE MUST REMAIN WITHIN DIMENSIONS			MATERIAL NO. SEE TABLE		DOCUMENT NO. SD-87537-032		SHEET NO. 2 OF 2					

9 8 7 6 5 4 3 2 1