



**Distributor of Molex Connector Corporation: Excellent Integrated System Limited**  
Datasheet of 0940304200 - Connector Quick Connect Receptacle 20-24 AWG 0.110"  
(2.79mm) Crimp

Contact us: [sales@integrated-circuit.com](mailto:sales@integrated-circuit.com) Website: [www.integrated-circuit.com](http://www.integrated-circuit.com)

---

## **Excellent Integrated System Limited**

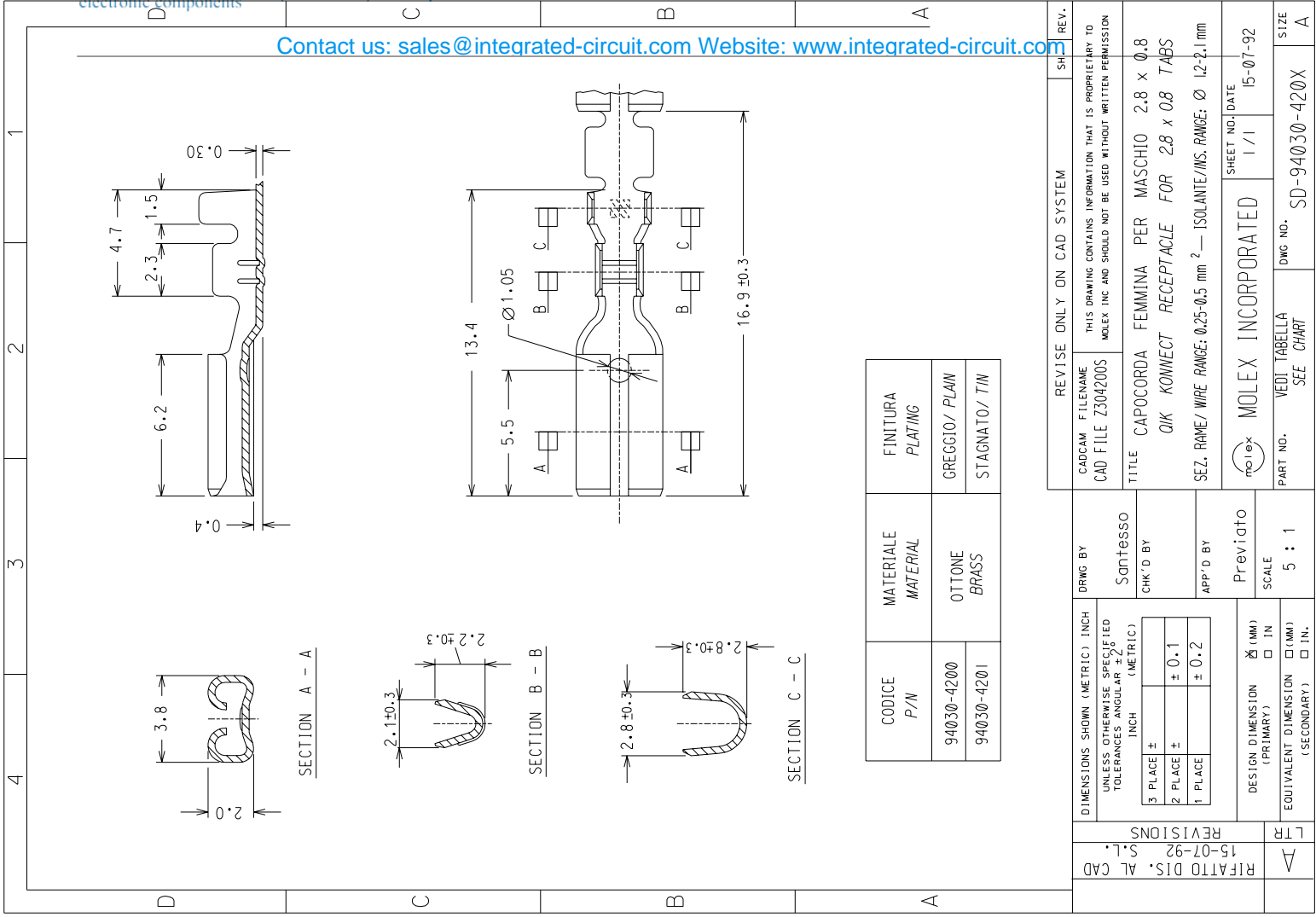
Stocking Distributor

Click to view price, real time Inventory, Delivery & Lifecycle Information:

[Molex Connector Corporation](#)  
[0940304200](#)

For any questions, you can email us directly:  
[sales@integrated-circuit.com](mailto:sales@integrated-circuit.com)

Contact us: sales@integrated-circuit.com Website: www.integrated-circuit.com



REV.	SH	REVISE ONLY ON CAD SYSTEM
		CAD/CAM FILENAME CAD FILE Z304200S
		TITLE CAPOCORDA FEMMINA PER MASCHIO 2.8 x 0.8 QIK CONNECT RECEPTACLE FOR 2.8 x 0.8 TABS
		SEZ. RANGE/ WIRE RANGE: 0.25-0.5 mm <sup>2</sup> — ISOLANTE/INS. RANGE: Ø 1.2-2.1 mm
		MOLEX INCORPORATED
		SHEET NO./DATE 1/1 15-07-92
		PART NO. VEDI TABELLA SEE CHART DWG NO. SD-94030-420X SIZE A

DRWG BY	CHK'D BY	APP'D BY
Santesso		Previgato

DIMENSIONS SHOWN (METRIC) INCH	UNLESS OTHERWISE SPECIFIED
3 PLACE ±	± 0.1
2 PLACE ±	± 0.2
1 PLACE ±	

DESIGN DIMENSION (PRIMARY)	(MM)	(IN)
EQUIVALENT DIMENSION (SECONDARY)	(MM)	(IN.)

REVISIONS	LTR
15-07-92 S.L.	A
RIFATTO DIS. AL CAD	