



Distributor of Molex Connector Corporation: Excellent Integrated System Limited
Datasheet of 0940305000 - Connector Quick Connect Receptacle 18-24 AWG 0.250"
(6.35mm) Crimp

Contact us: sales@integrated-circuit.com Website: www.integrated-circuit.com

Excellent Integrated System Limited

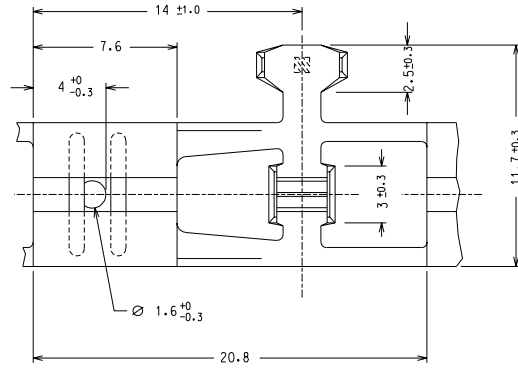
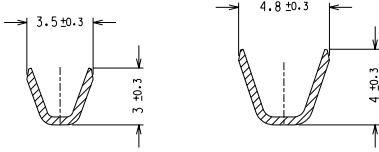
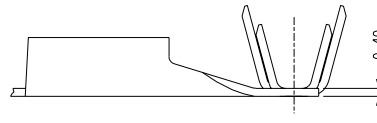
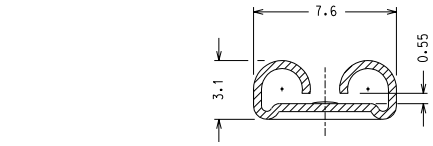
Stocking Distributor

Click to view price, real time Inventory, Delivery & Lifecycle Information:

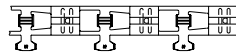
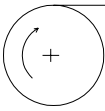
[Molex Connector Corporation](#)
[0940305000](#)

For any questions, you can email us directly:
sales@integrated-circuit.com

Contact us: sales@integrated-circuit.com Website: www.integrated-circuit.com



SENSO DI AVANZAMENTO PER MINI APPLICATORE
 DIRECTION OFF TOP OF REEL



CODICE P/N	MATERIALE MATERIAL	FINITURA PLATING
94030-5000	OTTONE BRASS	GREGGIO/ PLAIN
94030-5001		STAGNATO/ TIN

REVISE ONLY ON CAD SYSTEM		SH.	REV.
CAD/CAM FILENAME CAD FILE 030500XS		THIS DRAWING CONTAINS INFORMATION THAT IS PROPRIETARY TO MOLEX INC AND SHOULD NOT BE USED WITHOUT WRITTEN PERMISSION	
TITLE TERMINALE FEMMINA A BANDIERA DA 6.3 x 0.8 QIK KONNECT FLAG 6.3 x 0.8		SEZ. RAME/WIRE RANGE: 0.5-1.0 mm ² —ISOLANTE/INS. RANGE: Ø 2.0-3.3 mm	
DESIGN DIMENSION (PRIMARY) <input type="checkbox"/> (MM) <input type="checkbox"/> IN.		SHEET NO./DATE 1 / 1 17-01-90	
EQUIVALENT DIMENSION (SECONDARY) <input type="checkbox"/> (MM) <input type="checkbox"/> IN.		PART NO. VEDI TABELLA SEE CHART 94030-500X SD	
SCALE 5 : 1		SIZE B	

A1 | EDN Z7-007 12-07-96 G.F.

A | 19-01-90 G.F.

LTR REVISIONS

PLACES	±	(METRIC)
3	±	0.1
2	±	0.1
1	±	0.2

DRWG BY
Gottardo
CHK'D BY
PREVIATO
APP'D BY
SCALE
5 : 1

MOLEX INCORPORATED
 SHEET NO./DATE
 1 / 1 17-01-90
 PART NO. VEDI TABELLA SEE CHART
 94030-500X SD