

Excellent Integrated System Limited

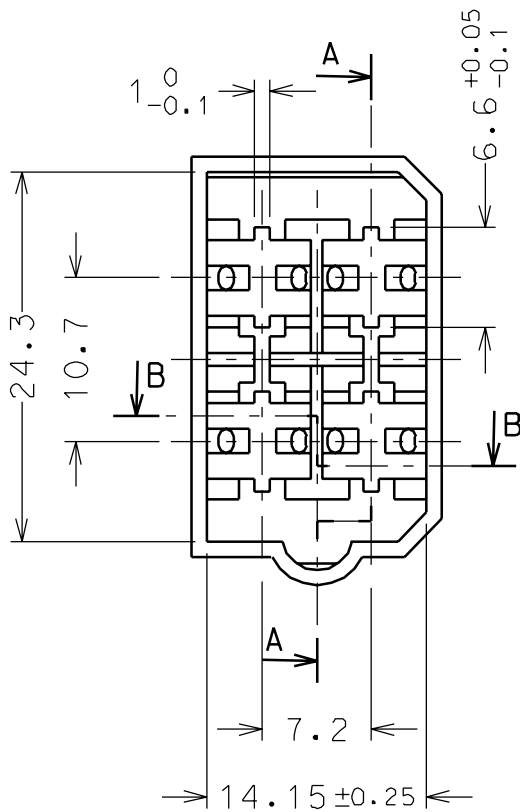
Stocking Distributor

Click to view price, real time Inventory, Delivery & Lifecycle Information:

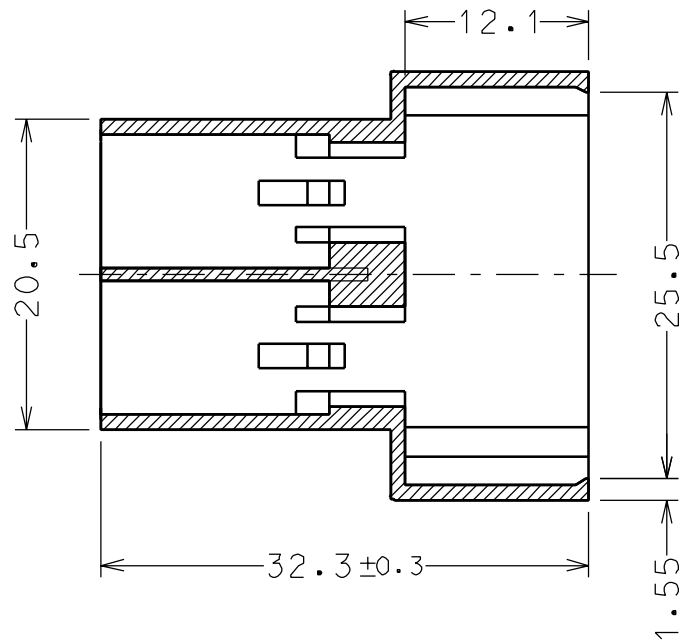
[Molex Connector Corporation](#)
[0940904160](#)

For any questions, you can email us directly:

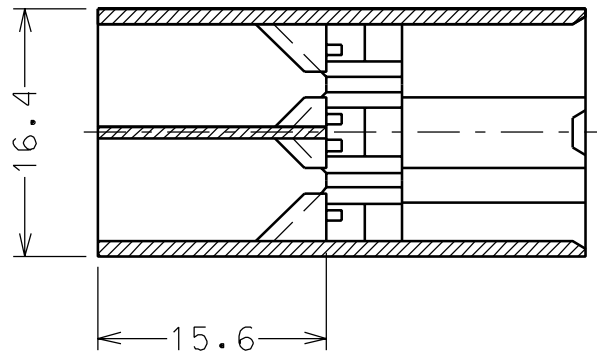
sales@integrated-circuit.com



SEZ. A-A



SEZ. B-B



NOTE:

DA USARSI CON PORTAFEMMINE
COD. 94090-4140 SENZA AGGANCI O
94090-4150 CON AGGANCI

MATERIALE: NYLON 6.6 UL94 V2
CONFEZIONE: 2000 PEZZI (S.P.Q.) IN SACCHETTO
POSTI IN UNA SCATOLA DI CARTONE

Std. Descr.: HSG FOR 6.3 M TERM 4 CKT

C NO. Z2002-0005 RWN:FGOTTARDO 01/07/12 CHK: MTESTAGUZ 01/07/12 PPR: GZUIN 01/07/12	QUALITY SYMBOLS	GENERAL TOLERANCES: (UNLESS SPECIFIED)		SCALE 2:1	DESIGN UNITS <input checked="" type="checkbox"/> mm <input type="checkbox"/> INCH	FIRST ANGLE PROJECTION	DIMENSIONS: <input type="checkbox"/> mm INCH <input type="checkbox"/> mm <input checked="" type="checkbox"/> mm ONLY	SHT	REV
	MAJOR M =	mm	INCH	DRAWN BY & DATE F.Gottardo 88/08/29		TITLE: COPRICAPOCORDA A 4 VIE PARALLELE PER MASCHIO DA 6.3X0.8 mm			
	SIGNIF. S =	4 PLACES ±0.	±.	CHECKED BY & DATE		MOLEX INCORPORATED			
		3 PLACES ±0.	±.	APPROVED BY & DATE M.Previato 88/08/29					
	2 PLACES ±0.10	±.	CAD FILENAME		MATERIAL NO.	DRAWING NO.	SHEET NO.		
	1 PLACE ±0.20	±.	ANGULAR: ± / °						