

Excellent Integrated System Limited

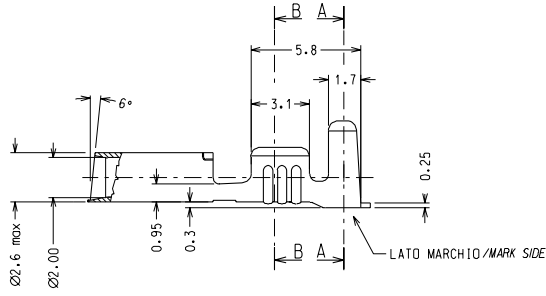
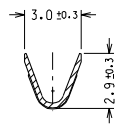
Stocking Distributor

Click to view price, real time Inventory, Delivery & Lifecycle Information:

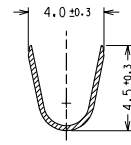
[Molex Connector Corporation](#)
[0945370100](#)

For any questions, you can email us directly:
sales@integrated-circuit.com

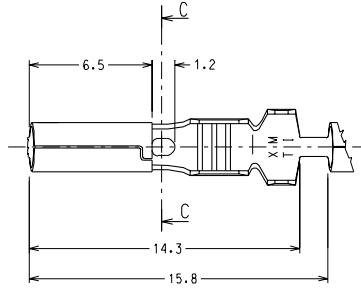
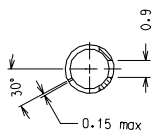
Sec. B-B



Sec. A-A



Sec. C-C



CODICE P/N	MATERIALE MATERIAL	FINITURA PLATING
94537-0100	OTTONE BRASS	GREGGIO/PLAIN
94537-0101		PRESTAGNATO/PRETIMED

CONFEZIONE STANDARD:

36000 pz. in 3 bobine x scatola

STANDARD PACKING QUANTITY:

36000 pcs. in 3 reels for box

REFERENCE SPEC.: SIGNAL LUX PR 222-04-17

EC NO. ZB-111	DRAWN BY & DATE L.SANTESSO 05-06-97	CHECKED BY & DATE S.SDRATO 05-06-97	APPROVED BY & DATE S.BARBIERI 05-06-97	QUALITY SYMBOLS	GENERAL TOLERANCES: (UNLESS SPECIFIED)		SCALE 5:1	DESIGN UNITS <input checked="" type="checkbox"/> mm <input type="checkbox"/> INCH	FIRST ANGLE PROJECTION	DIMENSIONS:			SHT	REV
					mm	INCH				mm	INCH	mm ONLY		
				MAJOR M	4 PLACES	±0.2	±							
				SIGNIF. S	3 PLACES	±0.1	±							
				CRITICAL C	2 PLACES	±0.1	±							
					1 PLACE	±0.2	±							
					ANGULAR: ± 2°									
A	DRAFT WHERE APPLICABLE MUST REMAIN WITHIN DIMENSIONS				CAD FILENAME 94537001.DGN		MATERIAL NO. SEE TABLE		DRAWING NO. SD-94537-001		SHEET NO. 1/1		SIZE A3	

TITLE: TERMINALE CILINDRICO FEMMINA Ø 2
CYLINDRICAL FEMALE TERMINAL Ø 2
SEZ. FILO/WIRE SECT.: 0.5-1.5 mm² ISOLANTE/INSUL.= 2.2-3.35 mm
MOLEX INCORPORATED

THIS DRAWING CONTAINS INFORMATION THAT IS PROPRIETARY TO MOLEX INCORPORATED AND SHOULD NOT BE USED WITHOUT WRITTEN PERMISSION.