

## Excellent Integrated System Limited

Stocking Distributor

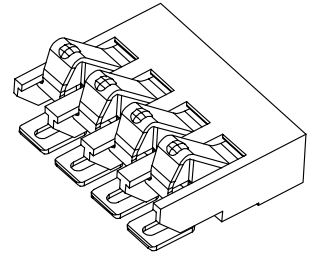
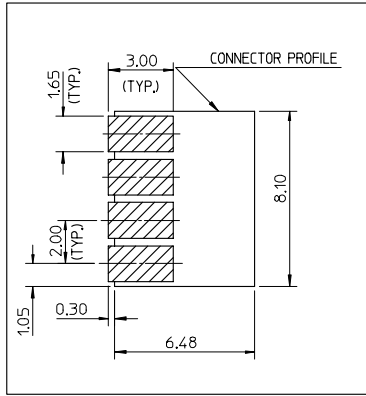
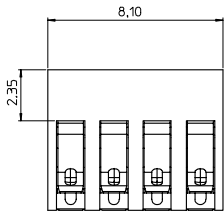
Click to view price, real time Inventory, Delivery & Lifecycle Information:

[Molex Connector Corporation](#)  
[0471030001](#)

For any questions, you can email us directly:

[sales@integrated-circuit.com](mailto:sales@integrated-circuit.com)

47103



RECOMMENDED FOOT PRINT

NOTE:

1.MATERIAL:

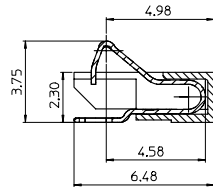
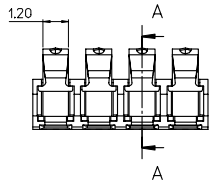
HOUSING: LCP, 30% GLASS-FILLED, UL 94V-0, COLOR :BLACK  
TERMINAL: 0.20MM PHOSPHOR BRONZE.

2.FINISH:

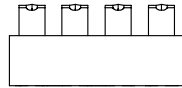
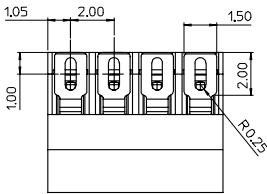
CONTACT AREA: 0.75 MICRON GOLD MIN OVER 1.25 MICRON NICKEL MIN.  
SOLDER AREA: 3.75 MICRON PURE TIN MIN OVER 1.25 MICRON NICKEL MIN.  
REST AREA: 1.25 MICRON NICKEL MIN.

3.COPLANARITY: 0.1 MAX AMONG THESE SOLDER TAILS.

4.PRODUCT SPECIFICATION: PS-47103-001



SECTION A-A



EC NO: SH2005-0060 DRAWN: JIAN 2004/08/20 CHKD: GRATE MA004/08/24 APPR: SHUANG 2004/08/24	QUALITY SYMBOLS	GENERAL TOLERANCES (UNLESS SPECIFIED)		SCALE 5:1	DESIGN UNITS METRIC	THIRD ANGLE PROJECTION	REVISE ON CAD ONLY
	-0 -0		mm	INCH	DIMENSION STYLE MM ONLY		TITLE 2.0MM PITCH 4 CIRCUITS BATTERY CONNECTOR
		4 PLACES	± ---	± ---	DRAWN BY JOHNSON	DATE 2004/03/03	
		3 PLACES	± ---	± ---	CHECKED BY GRMA	DATE 2004/03/03	
		DRAFT WHERE APPLICABLE MUST REMAIN WITHIN DIMENSIONS		APPROVED BY SHUANG	DATE 2004/03/03	MATERIAL NO. 471030001 DOCUMENT NO. SD-47103-001	SHEET NO. 1 OF 1
THIS DRAWING CONTAINS INFORMATION THAT IS PROPRIETARY TO MOLEX INCORPORATED AND SHOULD NOT BE USED WITHOUT WRITTEN PERMISSION							