



**Distributor of Molex Connector Corporation: Excellent Integrated System Limited**

Datasheet of 0050361779 - MINIFIT JR RA SR/PEG TIN 4CKT

Contact us: [sales@integrated-circuit.com](mailto:sales@integrated-circuit.com) Website: [www.integrated-circuit.com](http://www.integrated-circuit.com)

---

## **Excellent Integrated System Limited**

Stocking Distributor

Click to view price, real time Inventory, Delivery & Lifecycle Information:

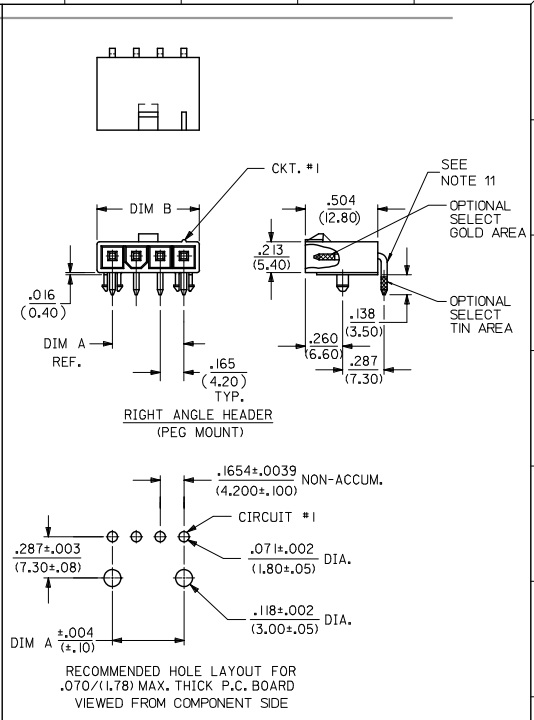
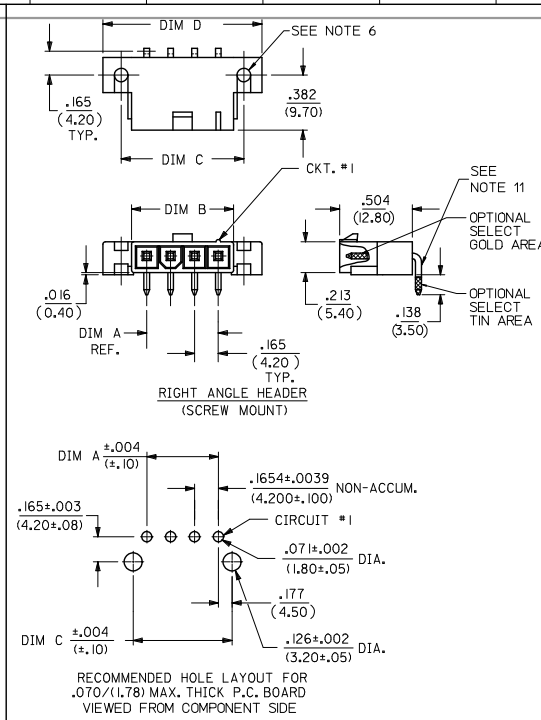
[Molex Connector Corporation](#)

[0050361779](#)

For any questions, you can email us directly:

[sales@integrated-circuit.com](mailto:sales@integrated-circuit.com)

CKT SIZE	DIM A	DIM B	DIM C	DIM D
4	.496 (12.60)	.709 (18.00)	.850 (21.60)	1.102 (28.00)
5	.661 (16.80)	.874 (22.20)	1.016 (25.80)	1.268 (32.20)
6	.827 (21.00)	1.039 (26.40)	1.181 (30.00)	1.433 (36.40)
7	.992 (25.20)	1.205 (30.60)	1.346 (34.20)	1.598 (40.60)
8	1.157 (29.40)	1.370 (34.80)	1.512 (38.40)	1.764 (44.80)
9	1.323 (33.60)	1.535 (39.00)	1.677 (42.60)	1.929 (49.00)
10	1.488 (37.80)	1.701 (43.20)	1.843 (46.80)	2.094 (53.20)
11	1.654 (42.00)	1.866 (47.40)	2.008 (51.00)	2.260 (57.40)
12	1.819 (46.20)	2.031 (51.60)	2.173 (55.20)	2.425 (61.60)



**LEGEND:**

5569 - \*\* A \* \* \* \*

CKT. SIZE (04-12)

ASSEMBLY

**MOUNTING & LOCK OPTION:**

3 = SCREW MOUNT, POSITIVE LOCK

4 = PEG MOUNT, POSITIVE LOCK

5 = PEG MOUNT, PASSIVE LOCK

**PLATING OPTION:**

(SEE NOTE 2)

**MATERIAL OPTION:**

(SEE NOTE 1)

- NOTES:**
- MATERIAL:**  
HOUSING:  
\*225\* = UNFILLED NYLON, UL94V-0, IEC 60335-1, 4TH EDITION GLOW WIRE CAPABLE, COLOR - BLACK.  
TERMINAL:  
BRASS ALLOY
  - FINISH (PLATING):**  
\*GS\* = .000030/(0.00076) MIN. SELECT GOLD OVER .000100/(0.00254) MIN. SELECT MATTE TIN OVER .000050/(0.00127) MIN. NICKEL OVERALL  
\*MS\* = .000100/(0.00254) MIN. MATTE TIN OVER .000050/(0.00127) MIN. NICKEL OVERALL
  - PRODUCT SPECIFICATION:** PS-5556-001
  - PACKAGING SPECIFICATION:** BULK PACKED PER PK-5569-002
  - PART MATES WITH MINI-FIT JR. RECEPTACLE SERIES 5557.**
  - SCREW MOUNT PARTS ARE DESIGNED FOR USE WITH #4 OR M3 SELF TAPPING SCREWS.**
  - DISCOLORATION IN THE BANDOLIER CARRIER AREA OF THE PIN IS INHERENT TO THE PLATING PROCESS AND IS DUE TO THE MASKING EFFECT OF THE CARRIER. THIS DISCOLORATION IS IN A NON-FUNCTIONAL AREA OF THE PIN AND WILL NOT AFFECT THE PERFORMANCE OF THE HEADER ASSEMBLY.**
  - CONNECTORS ARE NOT TO BE MATED AND UNMATED WHILE CIRCUITS ARE LIVE.**
  - PARTS ARE NOT DESIGNED FOR CURRENT SHARING.**
  - PART CONFORMS TO CLASS "B" REQUIREMENTS OF COSMETIC SPECIFICATION PS-45499-002, WITH THE EXCEPTION OF DISCOLORATION, FLASH AND SINK MEET CLASS "C" REQUIREMENTS.**
  - FORMING MARKS ON PINS ARE ACCEPTABLE.**

UPDATE NOTE 6 & 10	2013/04/03	QUALITY SYMBOLS
IEC NO: UCP2014-0298	2013/08/06	
DRAWING NO: 2013/08/06	2013/08/16	
DRWINGUIVEN		
CHKD: BELL		
APPR: SMITH		
B1		

E.D.P. NO.	ENG. NO.	CKT. SIZE	MOUNTING OPTION	LOCK OPTION	PLATING (SEE NOTE 2)	MAT'L (SEE NOTE 1)	TOOLED
50-36-1779	5569-04A4MS-225	4	PEGS	POSITIVE	TIN/NICKEL	94V-0	YES
50-36-1747	5569-05A4MS-225	5	PEGS	POSITIVE	TIN/NICKEL	94V-0	YES

GENERAL TOLERANCES (UNLESS SPECIFIED)		DIMENSION STYLE IN/MM		SCALE	DESIGN UNITS METRIC	THIRD ANGLE PROJECTION
4 PLACES ± .015	± .015	DRAWN BY	DATE	TITLE		
3 PLACES ± .010	± .010	JBELL	2009/06/16	MINI-FIT JR RIGHT ANGLE HEADER ASSEMBLY		
2 PLACES ± .008	± .008	CHECKED BY	DATE	SINGLE ROW, GLOW WIRE		
1 PLACE ± .005	± .005	SSOUSEK	2009/06/16			
0 PLACE ± .000	± .000	APPROVED BY	DATE			
ANGULAR ± 3°		MATERIAL NO.		DOCUMENT NO.		SHEET NO.
DRAFT WHERE APPLICABLE MUST REMAIN WITHIN DIMENSIONS		SEE CHART		SD-5569-NL*-225		1 OF 1

THIS DRAWING CONTAINS INFORMATION THAT IS PROPRIETARY TO MOLEX INCORPORATED AND SHOULD NOT BE USED WITHOUT WRITTEN PERMISSION