

Excellent Integrated System Limited

Stocking Distributor

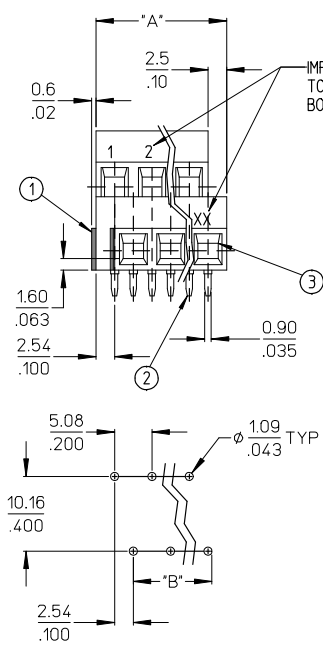
Click to view price, real time Inventory, Delivery & Lifecycle Information:

[Molex Connector Corporation](#)
[0398804508](#)

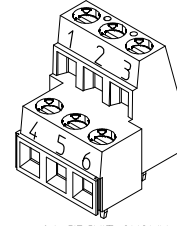
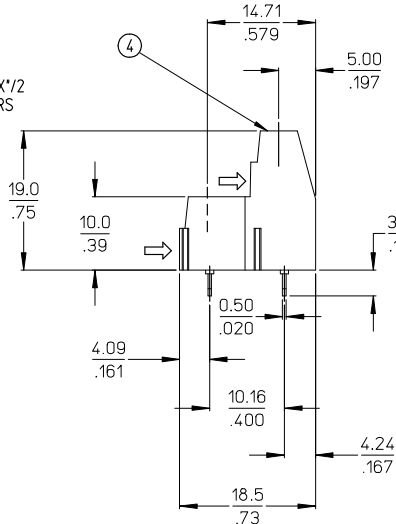
For any questions, you can email us directly:

sales@integrated-circuit.com

10 9 8 7 6 5 4 3 2 1 39880



RECOMMENDED PTH PATTERN



06 CIRCUIT SHOWN

(C)

NO. OF CIRC. "XX"	DIM. "A"	DIM. "B"	MATERIAL NO. (BLACK)	MATERIAL NO. (GREEN)	MATERIAL NO. 10A, BLACK
04	12.7 (50)	5.08 (200)	398800504	398804504	
06	17.8 (70)	10.16 (400)	398800506	398804506	
08	22.9 (90)	15.24 (600)	398800508	398804508	
10	27.9 (110)	20.32 (800)	398800510	398804510	398820510
12	33.0 (130)	25.40 (1000)	398800512	398804512	
14	38.1 (150)	30.48 (1200)	398800514	398804514	
16	43.2 (170)	35.56 (1400)	398800516	398804516	
18	48.3 (190)	40.64 (1600)	398800518	398804518	
20	53.3 (210)	45.72 (1800)	398800520	398804520	
22	58.4 (230)	50.80 (2000)	398800522	398804522	
24	63.5 (250)	55.88 (2200)	398800524	398804524	398820524
26	68.6 (270)	60.96 (2400)	398800526	398804526	
28	73.7 (290)	66.04 (2600)	398800528	398804528	
30	78.7 (310)	71.12 (2800)	398800530	398804530	
32	83.8 (330)	76.20 (3000)	398800532	398804532	
34	88.9 (350)	81.28 (3200)	398800534	398804534	
36	94.0 (370)	86.36 (3400)	398800536	398804536	
38	99.1 (390)	91.44 (3600)	398800538	398804538	
40	104.1 (410)	96.52 (3800)	398800540	398804540	
42	109.2 (430)	101.6 (4000)	398800542	398804542	
44	114.3 (450)	106.7 (4200)	398800544	398804544	
46	119.4 (470)	111.76 (4400)	398800546	398804546	
48	124.5 (490)	116.84 (4600)	398800548	398804548	

NOTES:

1. MATERIAL: SEE TABLE
2. FINISHES: SEE TABLE
3. PRODUCT SPECIFICATION: NOT REQUIRED
4. PACKAGING: NOT REQUIRED
5. MATES WITH: NONE
6. "XX" REFERS TO THE QUANTITY OF CIRCUITS.
7. ROHS COMPLIANT (C)

ADD GREEN OPTION	EC NO: WNA2008-0180	2008/05/16	2008/05/21
DRAWN: ENCINAS	CHKD: YORK	APPR: JIMKNEIL	2008/05/21
REV	DESCRIPTION		

QUALITY SYMBOLS	▽=0
	▽=0

GENERAL TOLERANCES (UNLESS SPECIFIED)	
4 PLACES	± .005
3 PLACES	± .005
2 PLACES	± .01
1 PLACE	± .01
ANGULAR ± 2 °	

DRAWN BY	DATE
C. YORK	2004/11/22
CHECKED BY	DATE
R. STONE	2004/11/22
APPROVED BY	DATE
GHR	2004/11/22

DIMENSION STYLE	SCALE	DESIGN UNITS	THIRD ANGLE PROJECTION
MM/IN	2:1	INCH	
TITLE			
5.08MM (.200") LOW PROF. TWO LEVEL TERM. BLOCK			
MATERIAL NO.			
SEE CHART			
DOCUMENT NO.			
SD-39880-005			
SHEET NO.			
1 OF 1			

ITEM	QTY.	DESCRIPTION	MATERIAL	ENGINEERING NUMBER
4	XX	SCREW, M3, SLOTTED	BRONZE	NICKEL PLATE
3	XX	CAGE CLAMP	BRASS	NICKEL PLATE
2	XX	TERMINAL, PC	COPPER	TIN PLATE
1	1	INSULATOR	POLYAMIDE	SEE CHART

Id. Frome_B_P_ME_T
Rev. E 2006/04/15

10 9 8 7 6 5 4 3 2 1