

## Excellent Integrated System Limited

Stocking Distributor

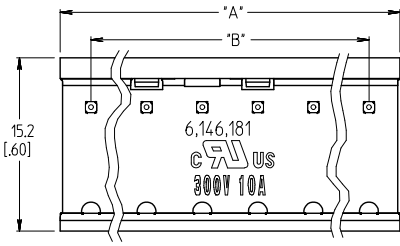
Click to view price, real time Inventory, Delivery & Lifecycle Information:

[Molex Connector Corporation](#)  
[0399900407](#)

For any questions, you can email us directly:

[sales@integrated-circuit.com](mailto:sales@integrated-circuit.com)

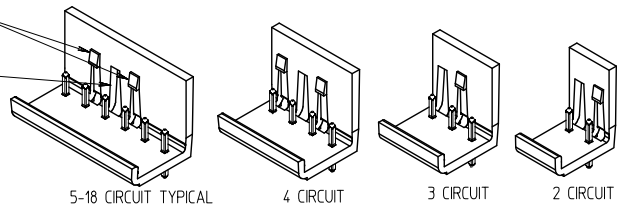
10 9 8 7 6 5 4 3 2 39990



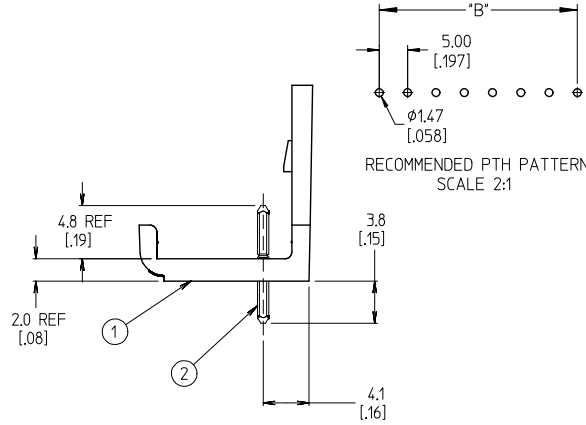
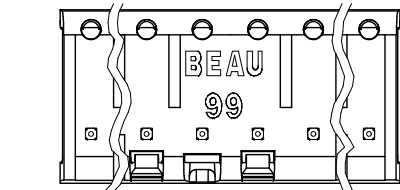
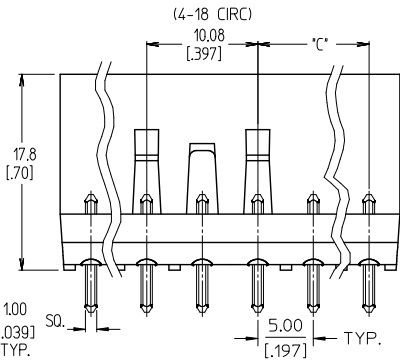
NOTES:

1. MATERIAL: SEE TABLE
2. FINISHES: SEE TABLE
3. MATES WITH 99 SERIES PLUG
4. INCH DIMENSIONS ARE SHOWN IN BRACKETS [XXX].
5. "XX" REFERS TO QTY OF CIRCUITS
6. ALL COMPONENTS ARE ROHS COMPLIANT.

DUAL SNAP FEATURE  
EITHER SIDE OF  
ALIGNMENT FEATURE  
ALIGNMENT FEATURE TO  
MATCH FEATURE ON PLUG



AUXILIARY VIEWS  
SCALE 1:1



RECOMMENDED PTH PATTERN  
SCALE 2:1

ASSEMBLY MATERIAL NO. (STANDARD)	NUMBER OF CIRCUITS "XX"	DIM. ± 0.25 "A" [± .101]	DIM. "B"	DIM. "C"
399900402	02	10.59 [0.417]	5.00 [0.197]	N/A
399900403	03	15.60 [0.614]	10.00 [0.394]	5.00 [0.197]
399900404	04	20.60 [0.811]	15.00 [0.591]	5.00 [0.197]
399900405	05	25.60 [1.008]	20.00 [0.787]	5.00 [0.197]
399900406	06	30.61 [1.205]	25.00 [0.984]	10.00 [0.394]
399900407	07	35.61 [1.402]	30.00 [1.181]	10.00 [0.394]
399900408	08	40.61 [1.599]	35.00 [1.378]	15.00 [0.591]
399900409	09	45.62 [1.796]	40.00 [1.575]	15.00 [0.591]
399900410	10	50.62 [1.993]	45.00 [1.772]	20.00 [0.787]
399900411	11	55.63 [2.190]	50.00 [1.968]	20.00 [0.787]
399900412	12	60.63 [2.387]	55.00 [2.165]	25.00 [0.984]
399900413	13	65.63 [2.584]	60.00 [2.362]	25.00 [0.984]
399900414	14	70.64 [2.781]	65.00 [2.559]	30.00 [1.181]
399900415	15	75.64 [2.978]	70.00 [2.756]	30.00 [1.181]
399900416	16	80.65 [3.175]	75.00 [2.953]	35.00 [1.378]
399900417	17	85.65 [3.372]	80.00 [3.150]	35.00 [1.378]
399900418	18	90.65 [3.569]	85.00 [3.346]	40.00 [1.575]

ITEM	QTY	DESCRIPTION	MATERIAL	FINISH
2	XX	HEADER PIN (STANDARD)	BRASS	TIN
1	1	MOLDING	NYLON	BLACK

REMOVED GOLD OPT EC NO: ICG2016-1388 DRAWN BY: CHAKRAJEEVINSKI 2016/04/20 APPROVED BY: APPREBROPERT 2016/04/22	QUALITY SYMBOLS ▽=0 ▽=0	GENERAL TOLERANCES (UNLESS SPECIFIED)		DIMENSION STYLE: MM/IN		SCALE: INCH	DESIGN UNITS: INCH	THIRD ANGLE PROJECTION		
		4 PLACES ± --- ± ---	3 PLACES ± --- ± .005	2 PLACES ± 0.13 ± .01	1 PLACE ± 0.3 ± ---	DRAWN BY: C. YORK	DATE: 2003/08/12	TITLE: 5.00/197 SINGLE ROW EUROSTYLE HEADER ASSEMBLY		
		ANGULAR ± 2°				CHECKED BY: P. WALTZ	DATE: 2003/12/04	MATERIAL NO. SEE CHART		
		DRAFT WHERE APPLICABLE MUST REMAIN WITHIN DIMENSIONS				APPROVED BY: G. ROBERTSON	DATE: 2003/12/08	DOCUMENT NO. SD-39990-002		
THIS DRAWING CONTAINS INFORMATION THAT IS PROPRIETARY TO MOLEX INCORPORATED AND SHOULD NOT BE USED WITHOUT WRITTEN PERMISSION		SHEET NO. 1 OF 1								

9 8 7 6 5 4 3 2 1