

Excellent Integrated System Limited

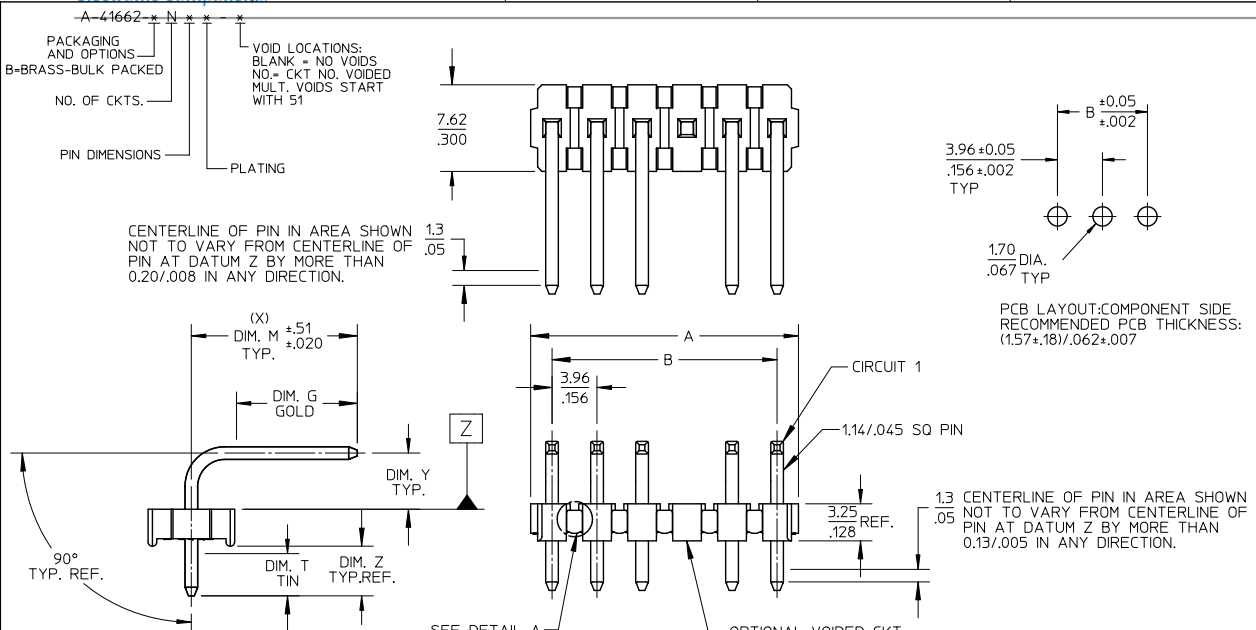
Stocking Distributor

Click to view price, real time Inventory, Delivery & Lifecycle Information:

[Molex Connector Corporation](#)
[0416620002](#)

For any questions, you can email us directly:

sales@integrated-circuit.com



CIRCUIT	B	A
2	3.96 .156	6.78/7.87 .267/3.10
3	7.92 .312	10.74/11.84 .423/4.66
4	11.89 .468	14.71/15.80 .579/6.22
5	15.85 .624	18.67/19.76 .735/7.78
6	19.81 .780	22.63/23.72 .891/9.34
7	23.77 .936	26.59/27.69 1.047/1.090
8	27.74 1.092	30.56/31.65 1.203/1.246
9	31.70 1.248	34.52/35.61 1.359/1.402
10	35.66 1.404	38.48/39.57 1.515/1.558
11	39.62 1.560	42.44/43.54 1.671/1.714
12	43.59 1.716	46.41/47.50 1.827/1.870
13	47.55 1.872	50.33/51.46 1.983/2.026
14	51.51 2.028	54.33/55.42 2.139/2.182
15	55.47 2.184	58.29/59.39 2.295/2.338
16	59.44 2.340	62.26/63.35 2.451/2.494
17	63.40 2.496	66.22/67.31 2.607/2.650
18	67.36 2.652	70.18/71.27 2.763/2.806
19	71.32 2.808	74.14/75.23 2.919/2.962
20	75.29 2.964	78.11/79.20 3.075/3.118
21	79.25 3.120	82.07/83.16 3.231/3.274
22	83.21 3.276	86.03/87.12 3.387/3.430
23	87.17 3.432	89.94/91.08 3.541/3.586
24	91.14 3.588	93.85/95.00 3.695/3.740

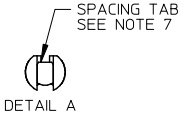
NOTES:

- MATERIAL: GLASS FILLED POLYESTER, 94V-0, MOLDED BLACK
- FINISH: PER SDES-88
 - (154) OVERALL TIN: 0.00254/0.00100 MIN.
 - OVERALL NICKEL UNDERPLATE: 0.00127/.000050 MIN.
 - (197) OVERALL REFLOWED MATTE TIN: 0.00152/0.00060 MIN.
 - OVER 0.00127/0.00050 MIN. NICKEL OVERALL.
 - (208) SELECT GOLD: 0.00038/0.00015 MIN.
 - SELECT TIN: 0.00254/0.00100 MIN.
 - OVERALL NICKEL UNDERPLATE: 0.00127/.000050 MIN.
 - (228) SELECT GOLD: 0.00076/0.00030 MIN.
 - SELECT TIN: 0.00254/0.00100 MIN.
 - OVERALL NICKEL UNDERPLATE: 0.00127/.000050 MIN.
 - (241) SELECT GOLD: 0.00051/0.00020 MIN.
 - SELECT TIN: 0.00254/0.00100 MIN.
 - OVERALL NICKEL UNDERPLATE: 0.00127/.000050 MIN.

- PRODUCT SPECIFICATION: PS-08-50.
- PACKAGING INFORMATION: SEE CHARTS
- SOLDERABILITY: PER SMES-152.
- PIN PUSH-OUT FORCE: PRIOR TO SOLDERING, A 3 LB. MINIMUM FORCE (IN EITHER DIRECTION) SHALL BE REQUIRED TO PUSH THE PIN OUT OF THE HEADER.
- PARTS ARE STACKABLE END TO END ON 3.96/.156 CENTERS. (SPACING TABS MUST BE REMOVED ON CIRCUIT SIZES 1-23 BEFORE PARTS ARE STACKABLE.)
- THIS PART CONFORMS TO CLASS B REQUIREMENTS OF COSMETIC SPECIFICATION PS-45499-002.

2-*	AJ1
1	
SHT.	REV.

ADD 26-50-5060	EC NO: UCP2012-3512	DRAWN:KIPER 2012/04/25	CHKD:ANDERSON 2012/04/25	APPR:FSMITH 2012/05/01	DESCRIPTION	QUALITY SYMBOLS	GENERAL TOLERANCES (UNLESS SPECIFIED)		DIMENSION STYLE	SCALE	DESIGN UNITS	THIRD ANGLE PROJECTION	
							mm	INCH	MM/IN	4:1	INCH		
							4 PLACES	± .005	± .005	DRAWN BY JSCHAFFER	DATE 2003/09/15	TITLE KK .156 HEADER ASSEMBLY FLAT BREAKAWAY 2-24 CKTS. molex	
							3 PLACES	± .005	± .010	CHECKED BY KSAMIEC	DATE 2003/09/15		
							2 PLACES	± 0.25	± .014	APPROVED BY MARGULIS	DATE 2003/09/15		
							1 PLACE	± 0.36	± .014	MATERIAL NO.	DOCUMENT NO.		
							0 PLACE	±	±	SEE CHART		SD-41662-001	SHEET NO. 1 OF *
							ANGULAR ±1/2°		THIS DRAWING CONTAINS INFORMATION THAT IS PROPRIETARY TO MOLEX INCORPORATED AND SHOULD NOT BE USED WITHOUT WRITTEN PERMISSION				
							DRAFT WHERE APPLICABLE MUST REMAIN WITHIN DIMENSIONS						



tb_frame_A_P_AM_T
Rev. G 2012/01/11