

## Excellent Integrated System Limited

Stocking Distributor

Click to view price, real time Inventory, Delivery & Lifecycle Information:

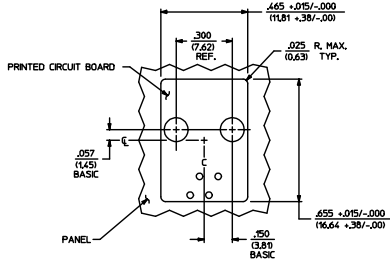
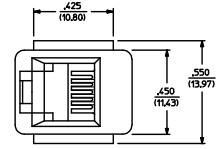
[Molex Connector Corporation](#)  
[0424106314](#)

For any questions, you can email us directly:  
[sales@integrated-circuit.com](mailto:sales@integrated-circuit.com)

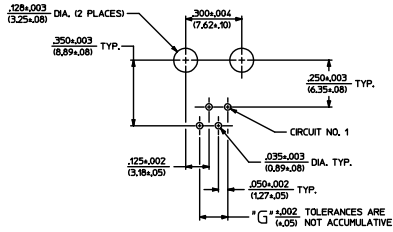
NOTES:

- 1) MATERIALS: HOUSING PARTS ARE MADE OF POLYESTER, RATED UL 94 V-0. COLOR IS BLACK. TERMINALS ARE .015(0.38) THICK PHOSPHOR BRONZE.
- 2) TERMINAL PLATING OPTIONS PER ES-88-\*\*\*\*:
  - A - SELECT GOLD IN CONTACT AREA: 50 MICRONS MIN. SELECT MATTIE TN IN PC TAIL AREA: 100 MICRONS MIN. WITH OVERALL NICKEL UNDERPLATE: 50 MICRONS MIN.
- 3) THESE MODULAR JACKS MEET THE PERFORMANCE REQUIREMENTS OF MOLEX PRODUCT SPECIFICATION PS-42410.
- 4) CONNECTORS ARE TO BE PACKED IN THERMOFORMED TRAYS, PER PACKAGING SPECIFICATION PK-42410-492.
- 5) ALL JACKS ARE DESIGNED TO BE USED WITH .062(1.57) OR .025(0.63) THICK P.C. BOARDS.
- 6) ALL JACKS CONFORM TO AND ACCEPT PLUGS WHICH CONFORM TO FCC RULES AND REGULATIONS PART 68, SUBPART F, WHEN PLATED WITH 50 MICRONS GOLD.
- 7) ALL JACKS MUST BE CAPABLE OF FITTING INTO MOLEX GAGE G-42410 (CONNECTOR SIZE 4).
- 8) SEE SHEETS 2 & 4 FOR CONNECTOR SIZE 6.
- 9) SEE SHEETS 3 & 4 FOR CONNECTOR SIZE 8.
- 10) SEE SHEET 4 FOR ASSEMBLY ITEM NUMBERS.
- 11) PART CONFORMS TO CLASS 'B' REQUIREMENTS OF COSMETIC SPECIFICATION PS-45499-002.
- 12) ENGRAVED NUMBERS ON HOUSING BODY ARE FOR MOLDING IDENTIFICATION ONLY. THEY ARE NOT INTENDED FOR ASSEMBLY IDENTIFICATION PURPOSES.
- 13) ALL UNTOLERANCED DIMENSIONS ARE SHOWN FOR REFERENCE ONLY.

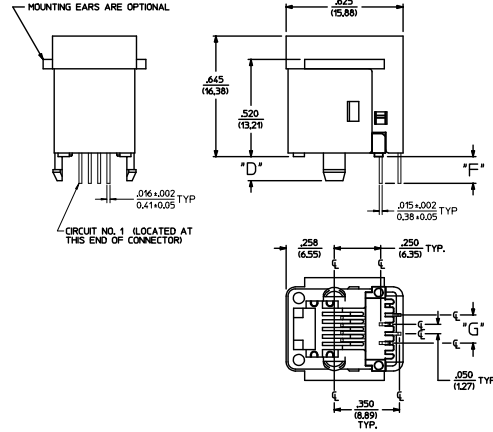
P.C. BOARD THICKNESS	DIM. 'D' (MTG. PEGS)	DIM. 'F' (P.C. TAILS)	CONNECTOR SIZE	CIRCUIT SIZE	DIM. 'G'
0.062"	.128 (3.25)	.120 +.015/-.025 (3.05 +.38/-.63)	4	4	.150 (3.81)
0.125"	.191 (4.85)	.205 +.015/-.025 (5.21 +.38/-.63)	4	2	.090 (2.27)



PANEL CUT-OUT FOR CONNECTOR SIZE 4



P.C. BOARD LAYOUT FOR CONNECTOR SIZE 4  
VIEWED FROM COMPONENT SIDE



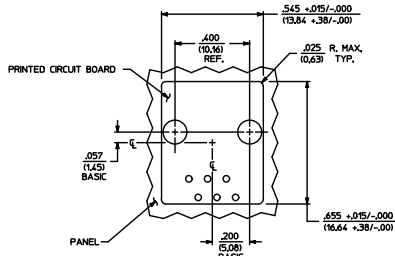
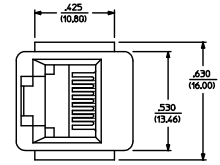
SIZE 4 MODULAR JACK LOADED WITH 4 TERMINALS SHOWN ABOVE  
(SEE SHEET 4 FOR PART NUMBER AVAILABILITY)

QUALITY SYMBOLS	GENERAL TOLERANCES (UNLESS SPECIFIED)		DIMENSION STYLE		SCALE	DESIGN UNITS	THIRD ANGLE PROJECTION
	mm	INCH	IN/MM	INCH			
▽=0	4 PLACES ±	+.010	DRAWN BY	DATE	4:1	INCH	ASSEMBLY, VERTICAL MODULAR JACKS
▽=0	3 PLACES ±	+.010	DLT	1990/10/12			
▽=0	2 PLACES ±	0.25	CHECKED BY	DATE			
▽=0	1 PLACE ±	+	BAP	1990/10/12			
▽=0	0 PLACE ±	+	APPROVED BY	DATE	molex		SHEET NO. 1 OF 4
ANGULAR ±1/2°			MATERIAL NO.	2012/02/14			
DRAFT WHERE APPLICABLE MUST REMAIN WITHIN DIMENSIONS			SEE SHEET 4	DOCUMENT NO.	SDA-42410-****		
SIZE D THIS DRAWING CONTAINS INFORMATION THAT IS PROPRIETARY TO MOLEX INCORPORATED AND SHOULD NOT BE USED WITHOUT WRITTEN PERMISSION							

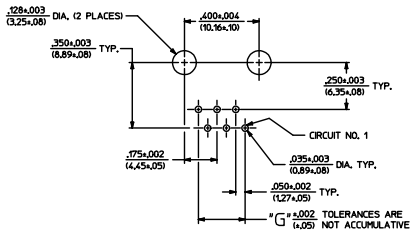
- NOTES:
- MATERIALS: HOUSING PARTS ARE MADE OF POLYESTER, RATED ULL 94 V-0, COLOR IS BLACK, TERMINALS ARE .015/(0.38) THICK PHOSPHOR BRONZE.
  - TERMINAL PLATING OPTIONS PER ES-88-\*\*\*:
    - SELECT GOLD IN CONTACT AREA: 50 MICRONS MIN. SELECT MATTE TIN IN PC TAIL AREA: 100 MICRONS MIN. WITH OVERALL NICKEL UNDERPLATE: 50 MICRONS MIN.
    - SELECT GOLD IN CONTACT AREA: 15 MICRONS MIN. SELECT MATTE TIN IN PC TAIL AREA: 100 MICRONS MIN. WITH OVERALL NICKEL UNDERPLATE: 50 MICRONS MIN.
  - THESE MODULAR JACKS MEET THE PERFORMANCE REQUIREMENTS OF MOLEX PRODUCT SPECIFICATION PS-42410.
  - CONNECTORS ARE TO BE PACKED IN THERMOFORMED TRAYS, PER PACKAGING SPECIFICATION PK-42410-49Z.
  - ALL JACKS ARE DESIGNED TO BE USED WITH .062/(1.57) OR .051/(1.31) THICK P.C. BOARDS.
  - ALL JACKS CONFORM TO AND ACCEPT PLUGS WHICH CONFORM TO FCC RULES AND REGULATIONS PART 68, SUBPART F, WHEN PLATED WITH 50 MICRONS GOLD.
  - ALL JACKS MUST BE CAPABLE OF FITTING INTO MOLEX GAGE G-42410 (CONNECTOR SIZE 4).
  - SEE SHEETS 1 & 4 FOR CONNECTOR SIZE 4.
  - SEE SHEETS 3 & 4 FOR CONNECTOR SIZE 8.
  - SEE SHEET 4 FOR ASSEMBLY ITEM NUMBERS.
  - PART CONFORMS TO CLASS "B" REQUIREMENTS OF COSMETIC SPECIFICATION PS-5499-002.
  - ENGRAVED NUMBERS ON HOUSING BODY ARE FOR HOLDING IDENTIFICATION ONLY. THEY ARE NOT INTENDED FOR ASSEMBLY IDENTIFICATION PURPOSES.
  - ALL UNTOLERANCED DIMENSIONS ARE SHOWN FOR REFERENCE ONLY.

P.C. BOARD THICKNESS	DIM. "D" (MTG. PEGS)	DIM. "F" (P.C. TAILS)
0.062/(1.57)	.128 (3.25)	.120 +.015/-.025 (3.05 +.38/- .63)
0.125/(3.18)	.191 (4.85)	.205 +.015/-.025 (5.21 +.38/- .63)

CONNECTOR SIZE	CIRCUIT SIZE	DIM. "G"
6	6	.250 (6.35)
6	4	.150 (3.81)
6	2	.050 (1.27)

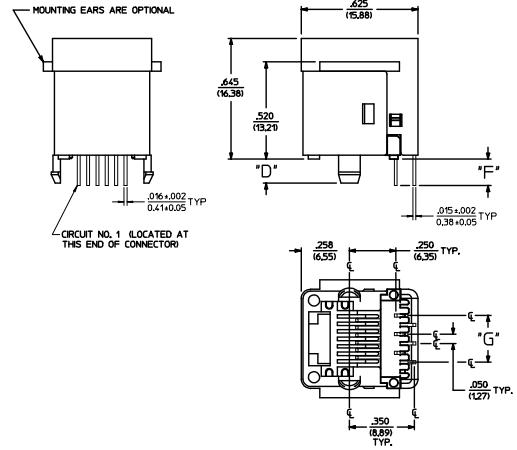


PANEL CUT-OUT FOR CONNECTOR SIZE 6



P.C. BOARD LAYOUT FOR CONNECTOR SIZE 6

VIEWED FROM COMPONENT SIDE



SIZE 6 MODULAR JACK LOADED WITH 6 TERMINALS SHOWN ABOVE

(SEE SHEET 4 FOR PART NUMBER AVAILABILITY)

QUALITY SYMBOLS	GENERAL TOLERANCES (UNLESS SPECIFIED)		DIMENSION STYLE		SCALE	DESIGN UNITS	THIRD ANGLE PROJECTION
	mm	INCH	IN/MM	INCH			
▽=0	4 PLACES	± .010	DRAWN BY	DATE	4:1	INCH	ASSEMBLY, VERTICAL MODULAR JACKS
▽=0	3 PLACES	± .010	DLT	1990/10/12			
▽=0	2 PLACES	± 0.25	CHECKED BY	DATE			
▽=0	1 PLACE	± .010	BAP	1990/10/12			
▽=0	0 PLACE	± .010	APPROVED BY	DATE	molex		SHEET NO. 2 OF 4
ANGULAR ±1/2°		PARTIAL NO.		DOCUMENT NO.			
DRAFT WHERE APPLICABLE MUST REMAIN WITHIN DIMENSIONS		SEE SHEET 4		SDA-42410-****			
SIZE D THIS DRAWING CONTAINS INFORMATION THAT IS PROPRIETARY TO MOLEX INCORPORATED AND SHOULD NOT BE USED WITHOUT WRITTEN PERMISSION							



SIZE 4 VERTICAL MODJACK ASSEMBLIES					
PART CHARACTERISTICS					
ASSEMBLY ITEM NUMBER	EXTERNAL CONNECTOR SIZE	NUMBER OF POSITIONS	P.C. BOARD THICKNESS	MOUNTING EARS OPTION	TERMINAL PLATING OPTION
42410-4168	4 POS. BODY	4	.062(1/57)	YES	A
42410-4170	↓	↓	.062(1/57)	NO	A
42410-4264	↓	↓	.125(3/16)	YES	A
42410-4266	4 POS. BODY	4	.125(3/16)	NO	A
42410-4312	4 POS. BODY	2	.062(1/57)	YES	A
42410-4314	↓	↓	.062(1/57)	NO	A
42410-4408	↓	↓	.125(3/16)	YES	A
42410-4440	4 POS. BODY	2	.125(3/16)	NO	A

SIZE 6 VERTICAL MODJACK ASSEMBLIES					
PART CHARACTERISTICS					
ASSEMBLY ITEM NUMBER	EXTERNAL CONNECTOR SIZE	NUMBER OF POSITIONS	P.C. BOARD THICKNESS	MOUNTING EARS OPTION	TERMINAL PLATING OPTION
42410-6168	6 POS. BODY	6	.062(1/57)	YES	A
42410-6170	↓	↓	.062(1/57)	NO	A
42410-6264	↓	↓	.125(3/16)	YES	A
42410-6266	6 POS. BODY	6	.125(3/16)	NO	A
42410-6312	6 POS. BODY	4	.062(1/57)	YES	A
42410-6314	↓	↓	.062(1/57)	NO	A
42410-6320	↓	↓	.062(1/57)	YES	B
42410-6408	↓	↓	.125(3/16)	YES	A
42410-6440	6 POS. BODY	4	.125(3/16)	NO	A
42410-6456	6 POS. BODY	2	.062(1/57)	YES	A
42410-6458	↓	↓	.062(1/57)	NO	A
42410-6552	↓	↓	.125(3/16)	YES	A
42410-6554	6 POS. BODY	2	.125(3/16)	NO	A

SIZE 8 VERTICAL MODJACK ASSEMBLIES						
PART CHARACTERISTICS						
ASSEMBLY ITEM NUMBER	EXTERNAL CONNECTOR SIZE	NUMBER OF POSITIONS	P.C. BOARD THICKNESS	KEYING OPTION	MOUNTING EARS OPTION	TERMINAL PLATING OPTION
42410-8312	8 POS. BODY	8	.062(1/57)	NO	YES	A
42410-8314	↓	↓	.062(1/57)	NO	NO	A
42410-8360	↓	↓	.062(1/57)	YES	YES	A
42410-8362	↓	↓	.062(1/57)	YES	NO	A
42410-8504	↓	↓	.125(3/16)	NO	YES	A
42410-8506	↓	↓	.125(3/16)	NO	NO	A
42410-8552	↓	↓	.125(3/16)	YES	YES	A
42410-8554	8 POS. BODY	8	.125(3/16)	YES	NO	A
42410-8600	8 POS. BODY	6	.062(1/57)	NO	YES	A
42410-8602	↓	↓	.062(1/57)	NO	NO	A
42410-8648	↓	↓	.062(1/57)	YES	YES	A
42410-8650	↓	↓	.062(1/57)	YES	NO	A
42410-8792	↓	↓	.125(3/16)	NO	YES	A
42410-8794	↓	↓	.125(3/16)	NO	NO	A
42410-8840	↓	↓	.125(3/16)	YES	YES	A
42410-8842	8 POS. BODY	6	.125(3/16)	YES	NO	A
42410-8888	8 POS. BODY	4	.062(1/57)	NO	YES	A
42410-8890	↓	↓	.062(1/57)	NO	NO	A
42410-8936	↓	↓	.062(1/57)	YES	YES	A
42410-8938	↓	↓	.062(1/57)	YES	NO	A
42410-9080	↓	↓	.125(3/16)	NO	YES	A
42410-9082	↓	↓	.125(3/16)	NO	NO	A
42410-9128	↓	↓	.125(3/16)	YES	YES	A
42410-9130	8 POS. BODY	4	.125(3/16)	YES	NO	A
42410-9176	8 POS. BODY	2	.062(1/57)	NO	YES	A
42410-9178	↓	↓	.062(1/57)	NO	NO	A
42410-9224	↓	↓	.062(1/57)	YES	YES	A
42410-9226	↓	↓	.062(1/57)	YES	NO	A
42410-9368	↓	↓	.125(3/16)	NO	YES	A
42410-9370	↓	↓	.125(3/16)	NO	NO	A
42410-9416	↓	↓	.125(3/16)	YES	YES	A
42410-9418	8 POS. BODY	2	.125(3/16)	YES	NO	A

SEE SHEET 1 EC No. 167205-2536 2015/07/24 ZDR/ANN/07EN CHK/DBELL 2015/07/24 APRES/SM 2015/07/24 BEL	QUALITY SYMBOLS	GENERAL TOLERANCES (UNLESS SPECIFIED)	DIMENSION STYLE	SCALE	DESIGN UNITS	THIRD ANGLE PROJECTION
	▽=0	4 PLACES +---   ----	IN/MM	1:1	INCH	ASSEMBLY, VERTICAL MODULAR JACKS
	▽=0	3 PLACES +---   ----				
	▽=0	2 PLACES +---   ----				
		ANGULAR ±1/2°				DOCUMENT NO. SDA-42410-****
		DRAFT WHERE APPLICABLE MUST REMAIN WITHIN DIMENSIONS				SHEET NO. 4 OF 4
						THIS DRAWING CONTAINS INFORMATION THAT IS PROPRIETARY TO MOLEX INCORPORATED AND SHOULD NOT BE USED WITHOUT WRITTEN PERMISSION