

## Excellent Integrated System Limited

Stocking Distributor

Click to view price, real time Inventory, Delivery & Lifecycle Information:

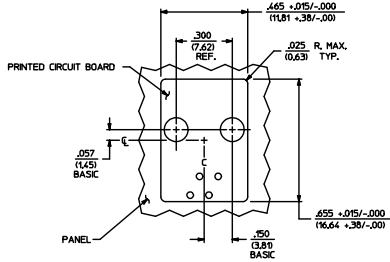
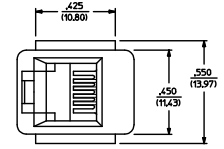
[Molex Connector Corporation](#)  
[0424106456](#)

For any questions, you can email us directly:

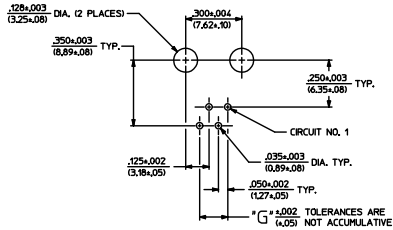
[sales@integrated-circuit.com](mailto:sales@integrated-circuit.com)

NOTES:  
 1) MATERIALS: HOUSING PARTS ARE MADE OF POLYESTER, RATED UL 94 V-0, COLOR IS BLACK, TERMINALS ARE .015(0.38) THICK PHOSPHOR BRONZE.  
 2) TERMINAL PLATING OPTIONS PER ES-88-\*\*\*\*:  
 A - SELECT GOLD IN CONTACT AREA: 50 MICRONS MIN.  
 SELECT MATTIE TIN IN PC TAIL AREA: 100 MICRONS MIN.  
 WITH OVERALL NICKEL UNDERPLATE: 50 MICRONS MIN.  
 3) THESE MODULAR JACKS MEET THE PERFORMANCE REQUIREMENTS OF MOLEX PRODUCT SPECIFICATION PS-42410.  
 4) CONNECTORS ARE TO BE PACKED IN THERMOFORMED TRAYS, PER PACKAGING SPECIFICATION PK-42410-492.  
 5) ALL JACKS ARE DESIGNED TO BE USED WITH .062(1.57) OR .025(0.63) THICK P.C. BOARDS.  
 6) ALL JACKS CONFORM TO AND ACCEPT PLUGS WHICH CONFORM TO FCC RULES AND REGULATIONS PART 68, SUBPART F, WHEN PLATED WITH 50 MICRONS GOLD.  
 7) ALL JACKS MUST BE CAPABLE OF FITTING INTO MOLEX GAGE G-42410 (CONNECTOR SIZE 4).  
 8) SEE SHEETS 2 & 4 FOR CONNECTOR SIZE 6.  
 9) SEE SHEETS 3 & 4 FOR CONNECTOR SIZE 8.  
 10) SEE SHEET 4 FOR ASSEMBLY ITEM NUMBERS.  
 11) PART CONFORMS TO CLASS 'B' REQUIREMENTS OF COSMETIC SPECIFICATION PS-45499-002.  
 12) ENGRAVED NUMBERS ON HOUSING BODY ARE FOR MOLDING IDENTIFICATION ONLY. THEY ARE NOT INTENDED FOR ASSEMBLY IDENTIFICATION PURPOSES.  
 13) ALL UNTOLERANCED DIMENSIONS ARE SHOWN FOR REFERENCE ONLY.

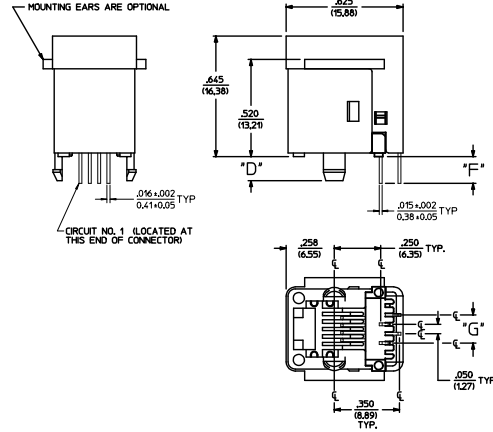
P.C. BOARD THICKNESS	DIM. 'D' (MTG. PEGS)	DIM. 'F' (P.C. TAILS)	CONNECTOR SIZE	CIRCUIT SIZE	DIM. 'G'
0.062"	.128 (3.25)	.120 +.015/-.025 (3.05 +.38/-.63)	4	4	.150 (3.81)
0.125"	.191 (4.85)	.205 +.015/-.025 (5.21 +.38/-.63)	4	2	.050 (1.27)



PANEL CUT-OUT FOR CONNECTOR SIZE 4



P.C. BOARD LAYOUT FOR CONNECTOR SIZE 4  
 VIEWED FROM COMPONENT SIDE



SIZE 4 MODULAR JACK LOADED WITH 4 TERMINALS SHOWN ABOVE  
 (SEE SHEET 4 FOR PART NUMBER AVAILABILITY)

QUALITY SYMBOLS	GENERAL TOLERANCES (UNLESS SPECIFIED)	DIMENSION STYLE		SCALE	DESIGN UNITS	THIRD ANGLE PROJECTION
		IN/MM	INCH			
▽=0	4 PLACES ± .010	mm	INCH	4:1	INCH	ASSEMBLY, VERTICAL MODULAR JACKS
▽=0	3 PLACES ± .025	mm	INCH			
▽=0	2 PLACES ± .010	mm	INCH			
▽=0	1 PLACE ± .010	mm	INCH			
▽=0	0 PLACE ± .010	mm	INCH			

LABEL PCB LAYOUT	QUALITY SYMBOLS	GENERAL TOLERANCES (UNLESS SPECIFIED)	DIMENSION STYLE	SCALE	DESIGN UNITS	THIRD ANGLE PROJECTION
EC NO. UEP205-2536	▽=0	4 PLACES ± .010	IN/MM	4:1	INCH	ASSEMBLY, VERTICAL MODULAR JACKS
DRWNG/MDR/EN 2815/02/24	▽=0	3 PLACES ± .025	mm			
CHKD/BEL 2815/02/24	▽=0	2 PLACES ± .010	INCH			
APP/PSM/INT 2815/02/24	▽=0	1 PLACE ± .010	mm			
REV		0 PLACE ± .010	INCH			

DATE	2012/02/14	DRAWN BY	DATE	1990/10/12
DATE	1990/10/12	CHECKED BY	DATE	
DATE		APPROVED BY	DATE	
DATE		APPROVED BY	DATE	

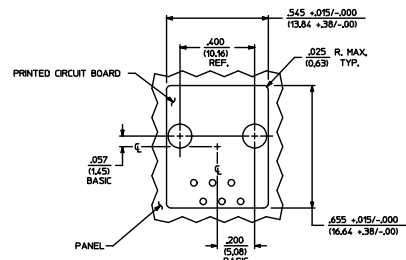
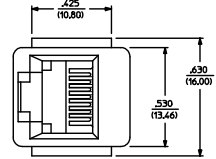
  

ANGULAR ±1/2°	MATERIAL NR.	DOCUMENT NR.
SEE SHEET 4	SDA-42410-****	SHEET NO. 1 OF 4
DRAFT WHERE APPLICABLE MUST REMAIN WITHIN DIMENSIONS	SIZE D	THIS DRAWING CONTAINS INFORMATION THAT IS PROPRIETARY TO MOLEX INCORPORATED AND SHOULD NOT BE USED WITHOUT WRITTEN PERMISSION

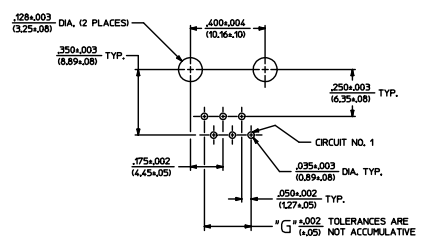
- NOTES:
- MATERIALS: HOUSING PARTS ARE MADE OF POLYESTER, RATED UL1, 94 V-0, COLOR IS BLACK, TERMINALS ARE .015(0.38) THICK PHOSPHOR BRONZE.
  - TERMINAL PLATING OPTIONS PER ES-88-\*\*\*\*:
    - A - SELECT GOLD IN CONTACT AREA: 50 MICRONS MIN. SELECT MATTE TIN IN PC TAIL AREA: 100 MICRONS MIN. WITH OVERALL NICKEL UNDERPLATE: 50 MICRONS MIN.
    - B - SELECT GOLD IN CONTACT AREA: 15 MICRONS MIN. SELECT MATTE TIN IN PC TAIL AREA: 100 MICRONS MIN. WITH OVERALL NICKEL UNDERPLATE: 50 MICRONS MIN.
  - THESE MODULAR JACKS MEET THE PERFORMANCE REQUIREMENTS OF MOLEX PRODUCT SPECIFICATION PS-42410.
  - CONNECTORS ARE TO BE PACKED IN THERMOFORMED TRAYS, PER PACKAGING SPECIFICATION PK-42410-49Z.
  - ALL JACKS ARE DESIGNED TO BE USED WITH .062(1.57) OR .025(0.63) THICK P.C. BOARDS.
  - ALL JACKS CONFORM TO AND ACCEPT PLUGS WHICH CONFORM TO FCC RULES AND REGULATIONS PART 68, SUBPART F, WHEN PLATED WITH 50 MICRONS GOLD.
  - ALL JACKS MUST BE CAPABLE OF FITTING INTO MOLEX GAGE G-42410 (CONNECTOR SIZE 4).
  - SEE SHEETS 1 & 4 FOR CONNECTOR SIZE 4.
  - SEE SHEETS 3 & 4 FOR CONNECTOR SIZE 8.
  - SEE SHEET 4 FOR ASSEMBLY ITEM NUMBERS.
  - PART CONFORMS TO CLASS "B" REQUIREMENTS OF COSMETIC SPECIFICATION PS-5499-002.
  - ENGRAVED NUMBERS ON HOUSING BODY ARE FOR HOLDING IDENTIFICATION ONLY. THEY ARE NOT INTENDED FOR ASSEMBLY IDENTIFICATION PURPOSES.
  - ALL UNTOLERANCED DIMENSIONS ARE SHOWN FOR REFERENCE ONLY.

P.C. BOARD THICKNESS	DIM. 'D' (MTG. PEGS)	DIM. 'F' (P.C. TAILS)
0.062(1.57)	.128 (3.25)	.120 +.015/-.025 (3.05 +.38/- .63)
0.125(3.18)	.191 (4.85)	.205 +.015/-.025 (5.21 +.38/- .63)

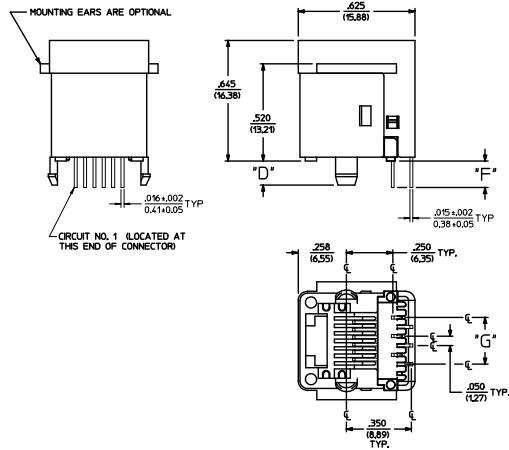
CONNECTOR SIZE	CIRCUIT SIZE	DIM. 'G'
6	6	.250 (6.35)
6	4	.150 (3.81)
6	2	.050 (1.27)



PANEL CUT-OUT FOR CONNECTOR SIZE 6



P.C. BOARD LAYOUT FOR CONNECTOR SIZE 6  
VIEWED FROM COMPONENT SIDE



SIZE 6 MODULAR JACK LOADED WITH 6 TERMINALS SHOWN ABOVE  
(SEE SHEET 4 FOR PART NUMBER AVAILABILITY)

SEE SHEET 1 EC NO. 0424106456-2536 DRAWING/REV 2015/07/24 CHK'D/BELL 2015/07/24 APPR'D/SMITH 2015/07/24 REV 1	QUALITY SYMBOLS	GENERAL TOLERANCES (UNLESS SPECIFIED)	DIMENSION STYLE	SCALE	DESIGN UNITS	THIRD ANGLE PROJECTION	
	∇=0 ∇=0 ∇=0	4 PLACES ±.010 3 PLACES ±.010 2 PLACES ±.025 1 PLACE ±.050 0 PLACE ±.100	mm INCH ±.010 ±.025 ±.050 ±.100	IN/MM DRAWN BY CHECKED BY APPROVED BY DATE DATE DATE	4:1	INCH	ASSEMBLY, VERTICAL MODULAR JACKS
		ANGULAR ±1/2° DRAFT WHERE APPLICABLE MUST REMAIN WITHIN DIMENSIONS		MATERIAL NO. DATE 2012/02/14			
				SEE SHEET 4 THIS DRAWING CONTAINS INFORMATION THAT IS PROPRIETARY TO MOLEX INCORPORATED AND SHOULD NOT BE USED WITHOUT WRITTEN PERMISSION			DOCUMENT NO. SDA-42410-**** SHEET NO. 2 OF 4



