

Excellent Integrated System Limited

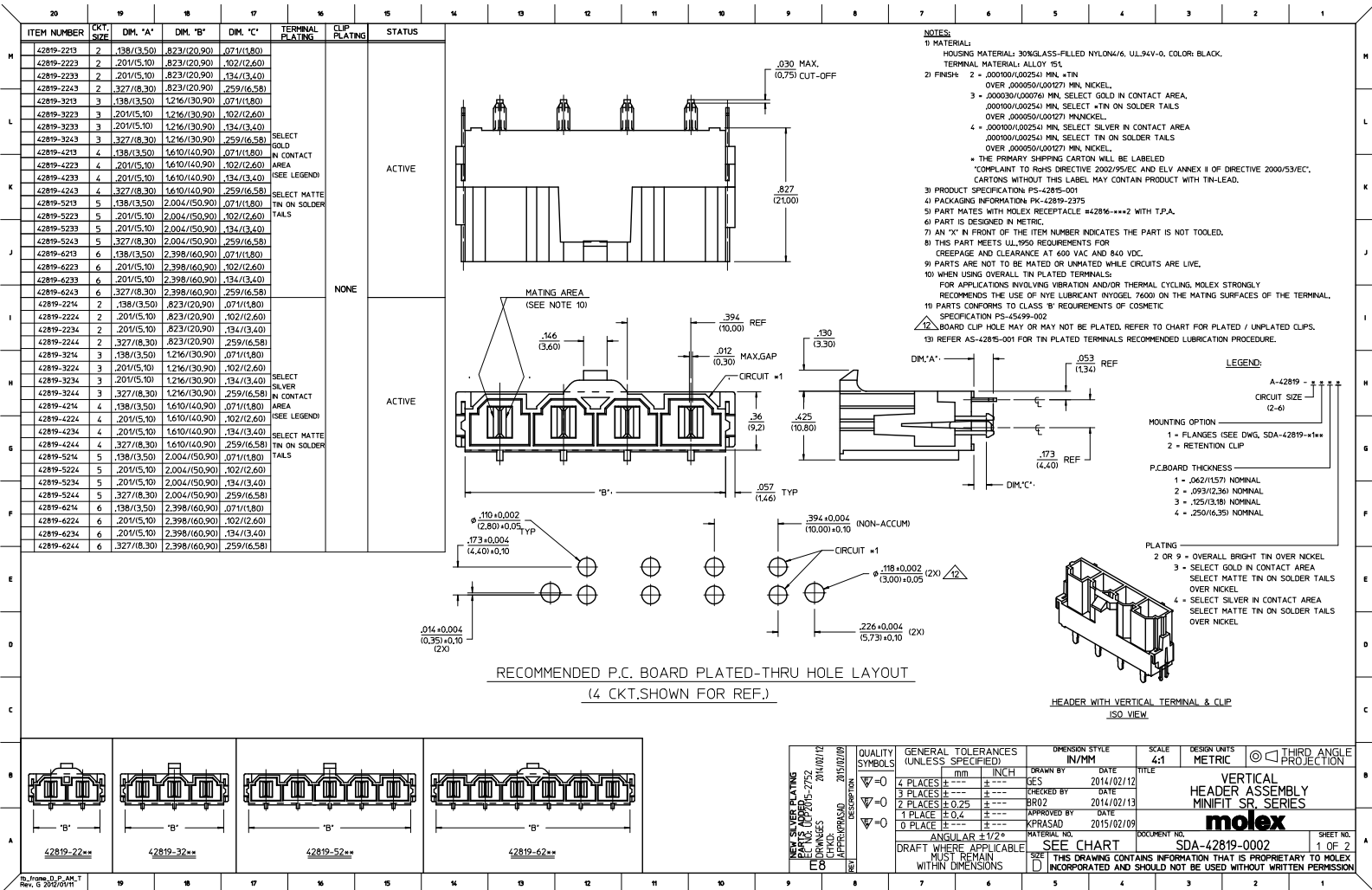
Stocking Distributor

Click to view price, real time Inventory, Delivery & Lifecycle Information:

[Molex Connector Corporation](#)
[0428194242](#)

For any questions, you can email us directly:

sales@integrated-circuit.com



ITEM NUMBER	QTY. SIZE	DIM. 'A'	DIM. 'B'	DIM. 'C'	TERMINAL PLATING	CLIP PLATING	STATUS
42819-2212	2	.138(3.50)	.823(20.90)	.071(1.80)			
42819-2222	2	.201(5.10)	.823(20.90)	.102(2.60)			
42819-2229	2	.201(5.10)	.823(20.90)	.102(2.60)			
42819-2232	2	.201(5.10)	.823(20.90)	.134(3.40)			
42819-2242	2	.327(8.30)	.823(20.90)	.259(6.58)			
42819-3212	3	.138(3.50)	1.216(30.90)	.071(1.80)			
42819-3222	3	.201(5.10)	1.216(30.90)	.102(2.60)			
42819-3232	3	.201(5.10)	1.216(30.90)	.134(3.40)			
42819-3242	3	.327(8.30)	1.216(30.90)	.259(6.58)			
42819-4212	4	.138(3.50)	1.610(40.90)	.071(1.80)	OVERALL BRIGHT TIN	NONE	PLANNED FOR OBSOLESCENCE
42819-4222	4	.201(5.10)	1.610(40.90)	.102(2.60)			
42819-4232	4	.201(5.10)	1.610(40.90)	.134(3.40)			
42819-4242	4	.327(8.30)	1.610(40.90)	.259(6.58)			
42819-5212	5	.138(3.50)	2.004(50.90)	.071(1.80)			
42819-5222	5	.201(5.10)	2.004(50.90)	.102(2.60)			
42819-5232	5	.201(5.10)	2.004(50.90)	.134(3.40)			
42819-5242	5	.327(8.30)	2.004(50.90)	.259(6.58)			
42819-6212	6	.138(3.50)	2.398(60.90)	.071(1.80)			
42819-6222	6	.201(5.10)	2.398(60.90)	.102(2.60)			
42819-6232	6	.201(5.10)	2.398(60.90)	.134(3.40)			
42819-6242	6	.327(8.30)	2.398(60.90)	.259(6.58)			

SEE SHEET 1 EC. NO. IEP2015-2752 2014/02/12 EC DRAWINGS CHKD: APPR: PRASAD 2015/02/09 REV:	QUALITY SYMBOLS	GENERAL TOLERANCES (UNLESS SPECIFIED)	DIMENSION STYLE	SCALE	DESIGN UNITS	THIRD ANGLE PROJECTION
	▽=0	4 PLACES ±.005 ±.005	IN/MM	1:2	METRIC	THIRD ANGLE PROJECTION
	▽=0	3 PLACES ±.005 ±.005	DRAWN BY	DATE	TITLE	VERTICAL HEADER ASSEMBLY MINIFIT SR SERIES
	▽=0	2 PLACES ±.025 ±.025	CHECKED BY	DATE		
		1 PLACE ±.04 ±.04	APPROVED BY	DATE		
		0 PLACE ±.00 ±.00	KPRASAD	2015/02/09		
		ANGULAR ±1/2°	MATERIAL NO.	SEE CHART	DOCUMENT NO.	SHEET NO.
		DRAFT WHERE APPLICABLE MUST REMAIN WITHIN DIMENSIONS			SDA-42819-0002	2 OF 2
					THIS DRAWING CONTAINS INFORMATION THAT IS PROPRIETARY TO MOLEX INCORPORATED AND SHOULD NOT BE USED WITHOUT WRITTEN PERMISSION	