

Excellent Integrated System Limited

Stocking Distributor

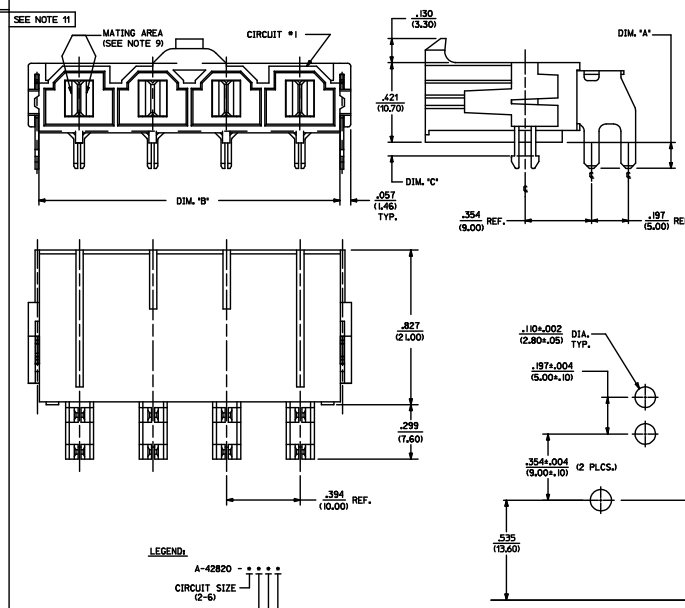
Click to view price, real time Inventory, Delivery & Lifecycle Information:

[Molex Connector Corporation](#)
[0428205233](#)

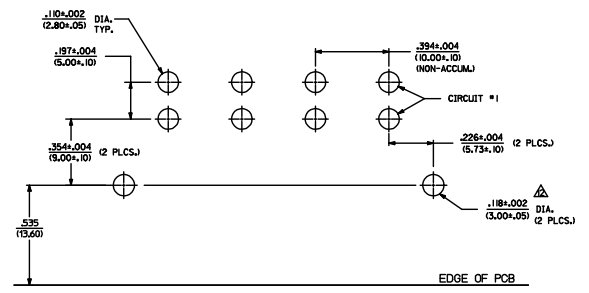
For any questions, you can email us directly:

sales@integrated-circuit.com

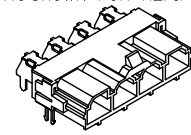
| ITEM NUMBER | CKT. SIZE | DIM. 'A' | DIM. 'B' | DIM. 'C' | TERMINAL PLATING | CLIP PLATING |
|-------------|-----------|------------|--------------|------------|----------------------------------|--------------|
| 42820-2212 | 2 | .138(3.50) | .823(20.90) | .071(1.80) | | |
| 42820-2219 | 2 | .138(3.50) | .823(20.90) | .071(1.80) | | |
| 42820-2222 | 2 | .201(5.10) | .823(20.90) | .102(2.60) | | |
| 42820-2232 | 2 | .201(5.10) | .823(20.90) | .134(3.40) | | |
| 42820-2239 | 2 | .201(5.10) | .823(20.90) | .134(3.40) | | |
| 42820-2242 | 2 | .327(8.30) | .823(20.90) | .259(6.58) | | |
| 42820-3212 | 3 | .138(3.50) | 1.217(30.90) | .071(1.80) | | |
| 42820-3222 | 3 | .201(5.10) | 1.217(30.90) | .102(2.60) | | |
| 42820-3229 | 3 | .201(5.10) | 1.217(30.90) | .134(3.40) | | |
| 42820-3232 | 3 | .201(5.10) | 1.217(30.90) | .134(3.40) | | |
| 42820-3242 | 3 | .327(8.30) | 1.217(30.90) | .259(6.58) | | |
| 42820-4212 | 4 | .138(3.50) | 1.610(40.90) | .071(1.80) | OVERALL BRIGHT TIN | |
| 42820-4312 | 4 | .138(3.50) | 1.610(40.90) | N/A | | |
| 42820-4222 | 4 | .201(5.10) | 1.610(40.90) | .102(2.60) | | |
| 42820-4232 | 4 | .201(5.10) | 1.610(40.90) | .134(3.40) | | |
| 42820-4242 | 4 | .327(8.30) | 1.610(40.90) | .259(6.58) | | |
| 42820-5212 | 5 | .138(3.50) | 2.004(50.90) | .071(1.80) | | |
| 42820-5222 | 5 | .201(5.10) | 2.004(50.90) | .102(2.60) | | |
| 42820-5232 | 5 | .201(5.10) | 2.004(50.90) | .134(3.40) | | |
| 42820-5242 | 5 | .327(8.30) | 2.004(50.90) | .259(6.58) | | |
| 42820-6212 | 6 | .138(3.50) | 2.398(60.90) | .071(1.80) | NONE | |
| 42820-6222 | 6 | .201(5.10) | 2.398(60.90) | .102(2.60) | | |
| 42820-6229 | 6 | .201(5.10) | 2.398(60.90) | .102(2.60) | | |
| 42820-6232 | 6 | .201(5.10) | 2.398(60.90) | .134(3.40) | | |
| 42820-6242 | 6 | .327(8.30) | 2.398(60.90) | .259(6.58) | | |
| 42820-2312 | 2 | .201(5.10) | .823(20.90) | N/A | | |
| 42820-2342 | 2 | .327(8.30) | .823(20.90) | N/A | | |
| 42820-2213 | 2 | .138(3.50) | .823(20.90) | .071(1.80) | | |
| 42820-2313 | 2 | .138(3.50) | .823(20.90) | N/A | | |
| 42820-2223 | 2 | .201(5.10) | .823(20.90) | .102(2.60) | | |
| 42820-2233 | 2 | .201(5.10) | .823(20.90) | .134(3.40) | | |
| 42820-2243 | 2 | .327(8.30) | .823(20.90) | .259(6.58) | | |
| 42820-3213 | 3 | .138(3.50) | 1.217(30.90) | .071(1.80) | | |
| 42820-3223 | 3 | .201(5.10) | 1.217(30.90) | .102(2.60) | | |
| 42820-3233 | 3 | .201(5.10) | 1.217(30.90) | .134(3.40) | | |
| 42820-3243 | 3 | .327(8.30) | 1.217(30.90) | .259(6.58) | | |
| 42820-4213 | 4 | .138(3.50) | 1.610(40.90) | .071(1.80) | SELECT GOLD IN CONTACT AREA | |
| 42820-4223 | 4 | .201(5.10) | 1.610(40.90) | .102(2.60) | | |
| 42820-4233 | 4 | .201(5.10) | 1.610(40.90) | .134(3.40) | | |
| 42820-4243 | 4 | .327(8.30) | 1.610(40.90) | .259(6.58) | SELECT MATTE TIN ON SOLDER TAILS | |
| 42820-5213 | 5 | .138(3.50) | 2.004(50.90) | .071(1.80) | | |
| 42820-5223 | 5 | .201(5.10) | 2.004(50.90) | .102(2.60) | | |
| 42820-5233 | 5 | .201(5.10) | 2.004(50.90) | .134(3.40) | | |
| 42820-5243 | 5 | .327(8.30) | 2.004(50.90) | .259(6.58) | | |
| 42820-6213 | 6 | .138(3.50) | 2.398(60.90) | .071(1.80) | | |
| 42820-6223 | 6 | .201(5.10) | 2.398(60.90) | .102(2.60) | | |
| 42820-6233 | 6 | .201(5.10) | 2.398(60.90) | .134(3.40) | | |
| 42820-6243 | 6 | .327(8.30) | 2.398(60.90) | .259(6.58) | | |



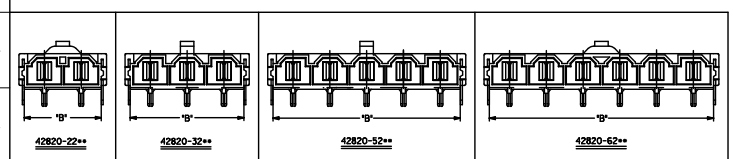
- NOTES:**
- MATERIAL: HOUSING MATERIAL: 30% GLASS-FILLED NYLON 4/6, UL, 94V-0, COLOR: BLACK. TERMINAL MATERIAL: ALLOY 151.
 - FINISH: 2- .000100(.00254) MIN. TIN OVER .000050(.00127) MIN. NICKEL. 3- .000030(.00076) MIN. SELECT GOLD IN CONTACT AREA. .000100(.00254) MIN. SELECT TIN ON SOLDER TAILS OVER .000050(.00127) MIN. NICKEL.
 - PRODUCT SPECIFICATION PS-42815-001 SPECIFICATION PS-45498-002
 - PACKAGING INFORMATION SEE MOLEX PACKAGING SPEC. PK-42820-910
 - PART MATES WITH MOLEX RECEPTACLE *42816-***2 WITH TPA.
 - PART IS DESIGNED IN METRIC.
 - AN 'X' IN FRONT OF THE ITEM NUMBER INDICATES THE PART IS NOT TOoled.
 - PARTS ARE NOT TO BE MATED OR UNMATED WHILE CIRCUITS ARE LIVE.
 - WHEN USING OVERALL TIN PLATED TERMINALS FOR APPLICATIONS INVOLVING VIBRATION AND/OR THERMAL CYCLING, MOLEX STRONGLY RECOMMENDS THE USE OF NYE LUBRICANT (NYGEL 7600) ON THE MATING SURFACES OF THE TERMINAL.
 - PARTS CONFORM TO CLASS 'B' REQUIREMENTS OF COSMETIC SPECIFICATION PS-45498-002
 - FOR TAPE AND REEL PACKAGING REFER TO PK-45986-004



RECOMMENDED P.C. BOARD PLATED-THRU HOLE LAYOUT (4 CKT. SHOWN FOR REF.)



HEADER WITH RT. ANGLE TERMINAL & CLIP ISO VIEW



| QUALITY SYMBOLS | GENERAL TOLERANCES (UNLESS SPECIFIED) | | DIMENSION STYLE | | SCALE | DESIGN UNITS | DESIGN METRIC | THIRD ANGLE PROJECTION |
|-----------------|---------------------------------------|--------|-----------------|------------|-------|--------------|---------------|------------------------|
| | mm | INCH | IN/MM | DATE | | | | |
| ▽=0 | 4 PLACES ±.005 | ±.0005 | AELHAG | 2010/08/05 | 4:1 | METRIC | | |
| ▽=0 | 3 PLACES ±.005 | ±.0005 | CHECKED BY | DATE | | | | |
| ▽=0 | 2 PLACES ±0.25 | ±.005 | JBELL | 2010/08/05 | | | | |
| ▽=0 | 1 PLACE ±0.40 | ±.010 | APPROVED BY | DATE | | | | |
| | 0 PLACE | | FSMITH | 2010/08/26 | | | | |

RIGHT ANGLE HEADER ASSEMBLY MINIFIT SR SERIES

molex

DOCUMENT NO. SDA-42820-0002

SHEET NO. 1 OF 1

DRAFT WHERE APPLICABLE MUST REMAIN WITHIN DIMENSIONS

SEE CHART

THIS DRAWING CONTAINS INFORMATION THAT IS PROPRIETARY TO MOLEX INCORPORATED AND SHOULD NOT BE USED WITHOUT WRITTEN PERMISSION