

Excellent Integrated System Limited

Stocking Distributor

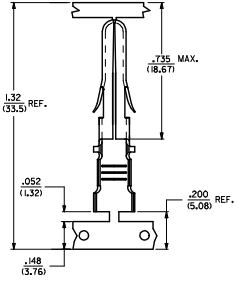
Click to view price, real time Inventory, Delivery & Lifecycle Information:

[Molex Connector Corporation](#)
[0428244001](#)

For any questions, you can email us directly:

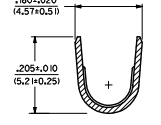
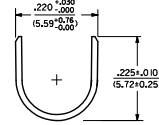
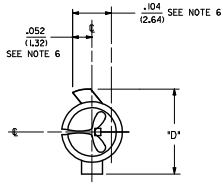
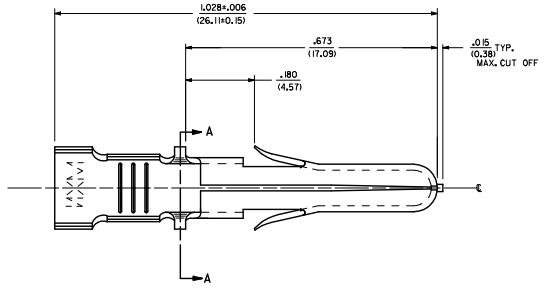
sales@integrated-circuit.com

ITEM NO.	CRIMP SIZE	MATERIAL	PLATING	PACKAGING	'D'
42824-4001	18 AWG	.0160/10.4061 THICK BRASS	PRE-TINNED .000020/ 0.0005 D MIN. TIN	SUPPLIED ON REEL	.225
42824-4002	12 AWG				(5.72)



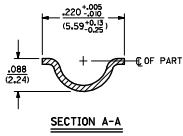
- NOTES:
1. MATERIAL: SEE CHART
 2. FINISH: SEE CHART
 3. PRODUCT SPECIFICATION: PS-40585
 4. PACKAGING SPECIFICATION: SEE CHART
 5. REELS OF THESE TERMINALS CANNOT HAVE MECHANICAL SPLICES.
 6. USING SEAM LINE AS VERTICAL CENTERLINE INDICATOR. MAXIMUM EXCURSION FROM HORIZONTAL CENTERLINE IS INDICATED FOR BOTH LOCK AND STOP TABS.
 7. THIS TERMINAL FOR USE IN HOUSING NO'S. 40585-1-5, 40585-3000, 43032-3300, 43032-3400, AND 43032-3500.
 8. TERMINALS FOR USE WITH STRANDED WIRE.
 9. PARTS CONFORM TO CLASS B REQUIREMENTS OF COSMETIC SPECIFICATION PS-45499-002.

STRIP AND CARRIER LAYOUT
SCALE 4:1

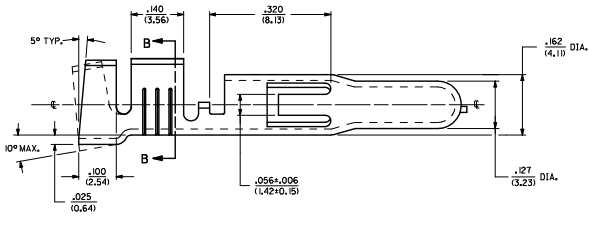


INSULATION CRIMP DETAIL

SECTION B-B



SECTION A-A

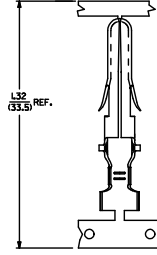
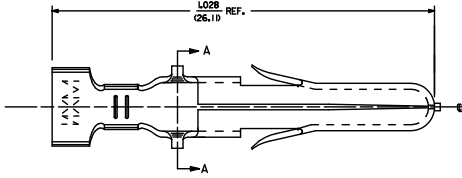


12 AWG TERMINAL SHOWN

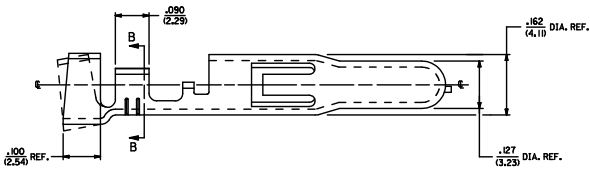
REMOVE OBSOLETE EC NO. L16P2016-4586 DRAWN: HAPPELDORN 2016/06/14 CHECKED: HAPPELDORN 2016/06/17 APPROVED: HAPPELDORN 2016/06/17	QUALITY SYMBOL	GENERAL TOLERANCES (UNLESS SPECIFIED)	DIMENSION STYLE	SCALE	DESIGN UNITS	THIRD ANGLE PROJECTION		
	∇=0	4 PLACES ± .005	IN/MM	8:1	INCH	☉		
	∇=0	3 PLACES ± .005	DRAWN BY	HAPPELDORN	DATE	2016/06/14	TITLE	TERMINAL PIN .125(3.18) DIA.
	∇=0	2 PLACES ± 0.13	CHECKED BY	SBR	DATE	9/03/08	APPROVED BY	DATE
	1 PLACE ± 0.25	APPROVED BY	FSM1TH					
	0 PLACE ± .005	ANGULAR ± 1/2°	PATENT NO.					
		DRAFT WHERE APPLICABLE MUST REMAIN WITHIN DIMENSIONS	SEE CHART	DOCUMENT NO.	SD-42824-40**			
			SIZE D	THIS DRAWING CONTAINS INFORMATION THAT IS PROPRIETARY TO MOLEX INCORPORATED AND SHOULD NOT BE USED WITHOUT WRITTEN PERMISSION				



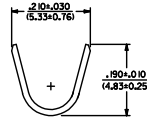
SHEET NO. 1 OF 2



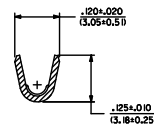
STRIP AND CARRIER LAYOUT
 SCALE 4:1



18 AWG TERMINAL SHOWN



INSULATION CRIMP DETAIL



SECTION B-B

SEE SHEET 1 EC NO. 042824-4886 DRAWN BY: RAPPOLDORN 2016/06/24 CHECKED BY: SBB 2016/07/27 APPROVED BY: FSMITH 2016/07/28	QUALITY SYMBOLS	GENERAL TOLERANCES (UNLESS SPECIFIED)	DIMENSION STYLE	SCALE	DESIGN UNITS	THIRD ANGLE PROJECTION
	∇=0	mm INCH	IN/MM	8:1	INCH	
	∇=0	4 PLACES ± --- ± ---	DRAWN BY DATE			
	∇=0	3 PLACES ± --- ± .005	RAPPOLDORN 2016/06/24	TITLE		
	2 PLACES ± 0.13 ± .01	CHECKED BY DATE				TERMINAL PIN .125(3.18) DIA.
	1 PLACE ± 0.25 ± ---	APPROVED BY DATE				
	0 PLACE ± --- ± ---	FSMITH 2016/07/06	MATERIAL NO.	DOCUMENT NO.	SHEET NO.	
	ANGULAR ±1/2°	SEE CHART		SD-42824-40**	2 OF 2	
DRAFT WHERE APPLICABLE MUST REMAIN WITHIN DIMENSIONS		SIZE D	THIS DRAWING CONTAINS INFORMATION THAT IS PROPRIETARY TO MOLEX INCORPORATED AND SHOULD NOT BE USED WITHOUT WRITTEN PERMISSION			