

Excellent Integrated System Limited

Stocking Distributor

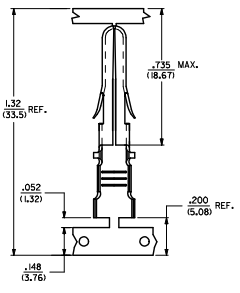
Click to view price, real time Inventory, Delivery & Lifecycle Information:

[Molex Connector Corporation](#)
[0428244003](#)

For any questions, you can email us directly:

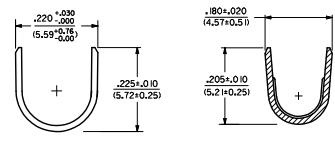
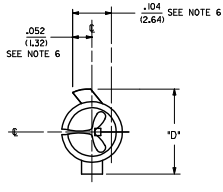
sales@integrated-circuit.com

ITEM NO.	CRIMP SIZE	MATERIAL	PLATING	PACKAGING	'D'
42824-4001	18 AWG	.0160/10.4061 THICK BRASS	PRE-TINNED .000020/ 0.0005 D MIN. TIN	SUPPLIED ON REEL	.225
42824-4002	12 AWG				(5.72)



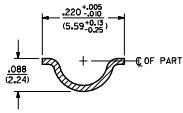
- NOTES:
1. MATERIAL: SEE CHART
 2. FINISH: SEE CHART
 3. PRODUCT SPECIFICATION: PS-40585
 4. PACKAGING SPECIFICATION: SEE CHART
 5. REELS OF THESE TERMINALS CANNOT HAVE MECHANICAL SPLICES.
 6. USING SEAM LINE AS VERTICAL CENTERLINE INDICATOR. MAXIMUM EXCURSION FROM HORIZONTAL CENTERLINE IS INDICATED FOR BOTH LOCK AND STOP TABS.
 7. THIS TERMINAL FOR USE IN HOUSING NO'S. 40585-1-5, 40585-3000, 43032-3300, 43032-3400, AND 43032-3500.
 8. TERMINALS FOR USE WITH STRANDED WIRE.
 9. PARTS CONFORM TO CLASS B REQUIREMENTS OF COSMETIC SPECIFICATION PS-45499-002.

STRIP AND CARRIER LAYOUT
SCALE 4:1

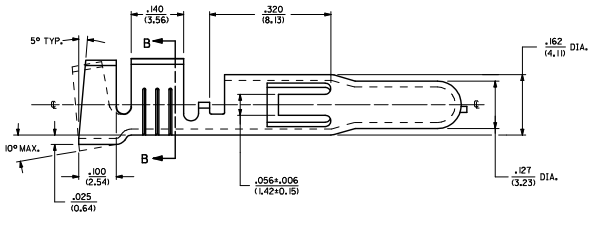
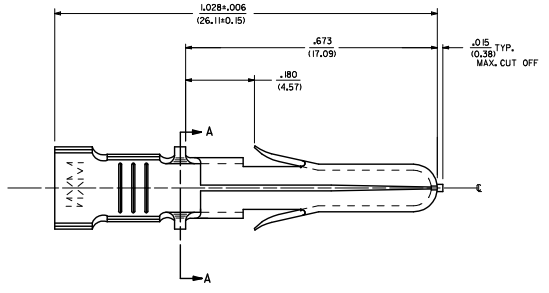


INSULATION CRIMP DETAIL

SECTION B-B

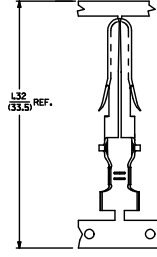
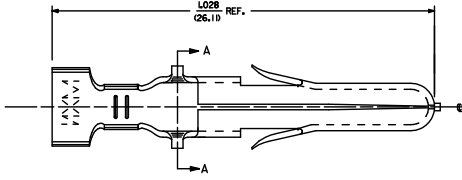


SECTION A-A

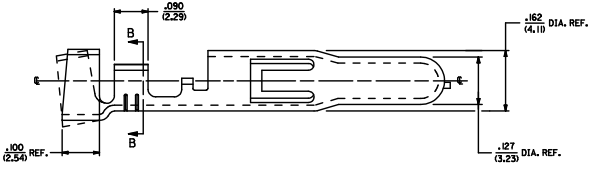


12 AWG TERMINAL SHOWN

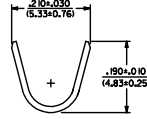
<p>REMOVE OBSOLETE EC NO. L16P2016-4586 DRAWN BY RAFFELDORN 2016/06/24 CHECKED BY RAFFELDORN 2016/06/24 APPROVED BY RAFFELDORN 2016/06/24</p>	QUALITY SYMBOLS	GENERAL TOLERANCES (UNLESS SPECIFIED)	DIMENSION STYLE	SCALE	DESIGN UNITS	THIRD ANGLE PROJECTION	
	<p>∇=0 4 PLACES ±.005</p> <p>∇=0 3 PLACES ±.005</p> <p>∇=0 2 PLACES ±.013</p> <p>∇=0 1 PLACE ±.025</p> <p>∇=0 0 PLACE ±.025</p>	<p>mm INCH</p> <p>±.005 (0.127)</p> <p>±.01 (0.254)</p> <p>±.025 (0.635)</p> <p>±.025 (0.635)</p>	<p>IN/MM</p> <p>8:1</p> <p>INCH</p>	<p>DRAWN BY DATE</p> <p>RAFFELDORN 2016/06/24</p> <p>CHECKED BY DATE</p> <p>SBR 90/03/08</p> <p>APPROVED BY DATE</p> <p>FSM1TH 2016/07/06</p>	<p>TERMINAL PIN .125(3.18) DIA.</p>	<p>molex</p>	<p>SHEET NO. 1 OF 2</p>
	<p>ANGULAR ±1/2°</p> <p>DRAFT WHERE APPLICABLE MUST REMAIN WITHIN DIMENSIONS</p>	<p>SEE CHART</p>	<p>DOCUMENT NO. SD-42824-40**</p>	<p>INCORPORATED AND SHOULD NOT BE USED WITHOUT WRITTEN PERMISSION</p>			



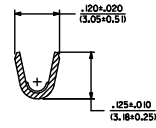
STRIP AND CARRIER LAYOUT
SCALE 4:1



18 AWG TERMINAL SHOWN



INSULATION CRIMP DETAIL



SECTION B-B

SEE SHEET 1 EC NO. 042824-4003 DRAWN BY: BAPPELDORN 2016/06/24 CHECKED BY: SBB 2016/07/20 APPROVED BY: FSMITH 2016/07/20 REV: 1	QUALITY SYMBOLS	GENERAL TOLERANCES (UNLESS SPECIFIED)	DRAGON STYLE	SCALE	DESIGN UNITS	THIRD ANGLE PROJECTION	
	$\nabla=0$ $\nabla=0$ $\nabla=0$	mm INCH 4 PLACES ± --- ± --- 3 PLACES ± --- ± .005 2 PLACES ± 0.13 ± .01 1 PLACE ± 0.25 ± --- 0 PLACE ± --- ± ---	DRAWN BY DATE BAPPELDORN 2016/06/24 CHECKED BY DATE SBB 2016/07/20 APPROVED BY DATE FSMITH 2016/07/20	IN/MM	8:1	INCH	TITLE TERMINAL PIN .125(3.18) DIA. molex DOCUMENT NO. SD-42824-40** SHEET NO. 2 OF 2
	ANGULAR ±1/2° DRAFT WHERE APPLICABLE MUST REMAIN WITHIN DIMENSIONS	MATERIAL NO. SEE CHART SIZE D THIS DRAWING CONTAINS INFORMATION THAT IS PROPRIETARY TO MOLEX INCORPORATED AND SHOULD NOT BE USED WITHOUT WRITTEN PERMISSION					