

Excellent Integrated System Limited

Stocking Distributor

Click to view price, real time Inventory, Delivery & Lifecycle Information:

[Molex Connector Corporation](#)

[0428784266](#)

For any questions, you can email us directly:

sales@integrated-circuit.com

MODULAR JACK CHARACTERISTICS LEGEND

EXTERNAL CONNECTOR BODY DIMENSIONS: (SEE NOTES 8 AND 9) JACKS ARE AVAILABLE IN STANDARD 4, 6, AND 8 POSITION BODY SIZES

NUMBER OF CONTACT POSITIONS:
CONNECTOR SIZE 4 CAN ACCOMMODATE 2 OR 4 TERMINALS.
CONNECTOR SIZE 6 CAN ACCOMMODATE 2, 4, OR 6 TERMINALS.
CONNECTOR SIZE 8 CAN ACCOMMODATE 2, 4, 6, 8, OR 10 TERMINALS

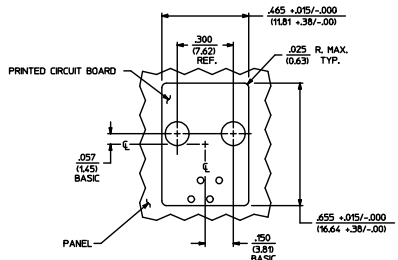
POLARIZATION OPTION:
"NO" JACKS WITHOUT KEYING SLOT
"YES" JACKS WITH KEYING SLOT (AVAILABLE ON CONNECTOR SIZE 8 ONLY)

MOUNTING EARS OPTION:
"YES" JACKS WITH MOUNTING EARS
"NO" JACKS WITHOUT MOUNTING EARS

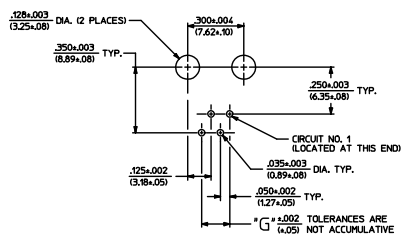
- NOTES:
- MATERIALS: HOUSING- POLYESTER, GLASS FILLED, UL94V-0, COLOR - BLACK
TERMINALS- PHOSPHOR BRONZE ALLOY, .015/(0.38) THICK
 - TERMINAL PLATING:
*SELECT GOLD IN CONTACT AREA: 50 MICRONS MIN.
*SELECT TIN IN PC TAIL AREA: 100 MICRONS MIN.
WITH OVERALL NICKEL UNDERPLATE: 50 MICRONS MIN.
*THE PRIMARY SHIPPING CARTON WILL BE LABELED "COMPLIANT TO RoHS DIRECTIVE 2002/95/EC AND ELV ANNEX II OF DIRECTIVE 2000/53/EC". CARTONS WITHOUT THIS LABEL MAY CONTAIN PRODUCT WITH TIN-LEAD IN THE PC TAIL.
 - THESE MODULAR JACKS MEET THE PERFORMANCE REQUIREMENTS OF MOLEX PRODUCT SPECIFICATION PS-42878.
 - CONNECTORS ARE SHIPPED IN THERMOFORMED TRAYS, PER PACKAGING SPECIFICATION PK-42878-492.
 - ALL JACKS ARE DESIGNED TO BE USED WITH .062/(1.57) OR .125/(3.18) THICK P.C. BOARDS.
 - ALL JACKS CONFORM TO AND ACCEPT PLUGS WHICH CONFORM TO FCC RULES AND REGULATIONS PART 68, SUBPART F.
 - ALL JACKS MUST BE CAPABLE OF FITTING INTO MOLEX GAGE G-42410 (CONNECTOR SIZE 4).
 - SEE SHEETS 2 & 4 FOR CONNECTOR SIZE 6.
 - SEE SHEETS 3 & 5 FOR CONNECTOR SIZE 8.
 - ENGRAVED NUMBERS ON HOUSING BODY ARE FOR MOLDING IDENTIFICATION ONLY. THEY ARE NOT INTENDED FOR ASSEMBLY IDENTIFICATION PURPOSES.
 - THIS PART CONFORMS TO CLASS B REQUIREMENTS OF COSMETIC SPECIFICATION PS-45499-002 WITH THE EXCEPTION OF THE SINK WHICH MEETS CLASS C REQUIREMENTS.

P. C. BOARD THICKNESS	DIM. "D" (MTG. PEGS)	DIM. "F" (P.C. TAILS)
.062(1.57)	.128 (3.25)	.120 ±.015/-.025 (3.05 ±.38/- .63)
.125(3.18)	.191 (4.85)	.205 ±.015/-.025 (5.21 ±.38/- .63)

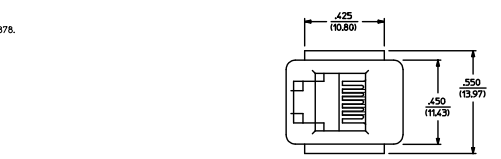
CONNECTOR SIZE	CIRCUIT SIZE	DIM. "G"
4	4	.150 (3.81)
4	2	.050 (1.27)



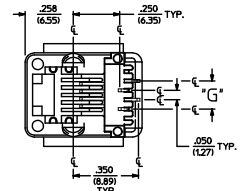
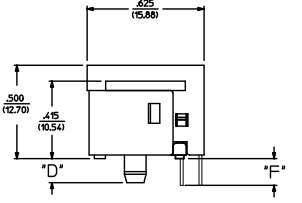
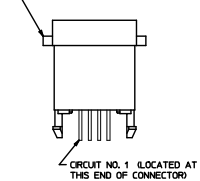
PANEL CUT-OUT FOR CONNECTOR SIZE 4



P.C. BOARD LAYOUT FOR CONNECTOR SIZE 4



MOUNTING EARS ARE OPTIONAL (SEE CHARACTERISTICS LEGEND)



SIZE 4 MODULAR JACK LOADED WITH 4 TERMINALS SHOWN ABOVE (SEE SHEET 4 FOR PART NUMBER AVAILABILITY)

ADD COSMETIC SPEC EC NO. 1072009-2027 DRAWN: KLOSTERER 2000/12/04 CHKD: BELL 2000/12/02 APPR: [Signature] 2000/12/02	QUALITY SYMBOLS ▽=0 ▽=0	GENERAL TOLERANCES (UNLESS SPECIFIED) 4 PLACES ±.010 3 PLACES ±.010 2 PLACES ±.025 1 PLACE ±.050 ANGULAR ±1/2°	DIMENSION STYLE IN/MM	SCALE 1:1	DESIGN UNITS INCH	THIRD ANGLE PROJECTION	
	DRAWN BY: [Signature] CHECKED BY: [Signature] APPROVED BY: [Signature]	DATE: 1990/10/12 DATE: 1990/10/12 DATE: 1990/10/12	TITLE ASSEMBLY, VERTICAL LOW PROFILE, MODULAR JACKS (CONNECTOR SIZE 4)	MATERIAL NO. SEE SHEET 4	DOCUMENT NO. SDA-42878-****	SHEET NO. 1 OF 5	MOLEX INCORPORATED
	DRAFT WHERE APPLICABLE MUST REMAIN WITHIN DIMENSIONS						
	THIS DRAWING CONTAINS INFORMATION THAT IS PROPRIETARY TO MOLEX INCORPORATED AND SHOULD NOT BE USED WITHOUT WRITTEN PERMISSION						

X-NOT TOOLED	PART CHARACTERISTICS				X-NOT TOOLED	PART CHARACTERISTICS				42878	CHARACTERISTICS LEGEND			
	ASSEMBLY NUMBER	EXTERNAL CONNECTOR SIZE	NUMBER OF POSITIONS	P. C. BOARD THICKNESS		MOUNTING EARS OPTION	ASSEMBLY ITEM NUMBER	EXTERNAL CONNECTOR SIZE	NUMBER OF POSITIONS		P. C. BOARD THICKNESS	MOUNTING EARS OPTION	EXTERNAL CONNECTOR BODY DIMENSIONS: AVAILABLE IN 4, 6, AND 8 POSITION BODY	NUMBER OF CONTACT POSITIONS: CONNECTOR SIZE 4 ACCOMMODATES 2 OR 4 TERMINALS; CONNECTOR SIZE 6 ACCOMMODATES 2, 4, OR 6 TERMINALS; CONNECTOR SIZE 8 ACCOMMODATES 2, 4, 6, 8, OR 10 TERMINALS
	42878-4216	4 POS. BODY	4	.062	YES	42878-4216	6 POS. BODY	6	.062	YES	(SEE SHEET 1 & 2 FOR PART DESCRIPTIONS AND DIMENSIONS)			
	42878-4218	↑	4	.062	NO	42878-4218	↑	6	.062	NO				
	42878-4264	↑	4	.125	YES	42878-4264	↑	6	.125	YES				
	42878-4266	↑	4	.125	NO	42878-4266	↑	6	.125	NO				
	42878-4360	↑	2	.062	YES	42878-4360	↑	4	.062	YES				
	42878-4362	↑	2	.062	NO	42878-4362	↑	4	.062	NO				
	42878-4408	↑	2	.125	YES	42878-4408	↑	4	.125	YES				
	42878-4410	4 POS. BODY	2	.125	NO	42878-4410	↑	4	.125	NO				
						42878-4504	↑	2	.062	YES				
						42878-4506	↑	2	.062	NO				
						42878-4552	↑	2	.125	YES				
						42878-4554	6 POS. BODY	2	.125	NO				

SEE SHEET ONE ILC NO. UCP2004-167 DRAWN: SCHMIDT 2004/03/08 CHECKED: SCHMIDT 2004/03/08 APPROVED: SCHMIDT 2004/03/08 DESCRIPTION:	QUALITY SYMBOLS	GENERAL TOLERANCES (UNLESS SPECIFIED)	SCALE	DESIGN UNITS	THIRD ANGLE PROJECTION	REVISION ON CAD ONLY
	4 PLACES ±.0 3 PLACES ±.0 2 PLACES ±.0 1 PLACE ±.0 ANGULAR ±1/2°	DIM INCH INCH INCH INCH INCH INCH INCH INCH INCH	--- INCH --- INCH --- INCH --- INCH --- INCH	--- INCH --- INCH --- INCH --- INCH --- INCH	IN/MM DATE 1992/04/09	ASSEMBLY, VERTICAL LOW PROFILE MODULAR JACKS (CONNECTOR SIZE 4 & 6) MOLEX INCORPORATED
DRAFT WHERE APPLICABLE MUST REMAIN WITHIN DIMENSIONS		APPROVED BY RAS DATE 1992/04/09		THIS DRAWING CONTAINS INFORMATION THAT IS PROPRIETARY TO MOLEX INCORPORATED AND SHOULD NOT BE USED WITHOUT WRITTEN PERMISSION		