

## Excellent Integrated System Limited

Stocking Distributor

Click to view price, real time Inventory, Delivery & Lifecycle Information:

[Molex Connector Corporation](#)

[0428786554](#)

For any questions, you can email us directly:

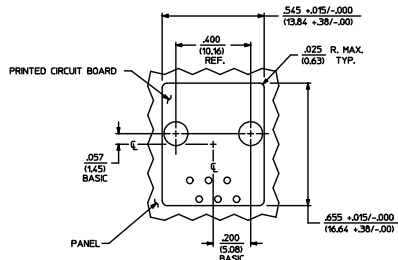
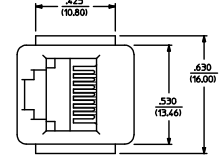
[sales@integrated-circuit.com](mailto:sales@integrated-circuit.com)

MODULAR JACK CHARACTERISTICS LEGEND	
EXTERNAL CONNECTOR BODY DIMENSIONS: (SEE NOTES 8 AND 9)	JACKS ARE AVAILABLE IN STANDARD 4, 6, AND 8 POSITION BODY SIZES
NUMBER OF CONTACT POSITIONS:	CONNECTOR SIZE 4 CAN ACCOMMODATE 2 OR 4 TERMINALS, CONNECTOR SIZE 6 CAN ACCOMMODATE 2, 4, OR 6 TERMINALS, CONNECTOR SIZE 8 CAN ACCOMMODATE 2, 4, 6, 8, OR 10 TERMINALS
POLARIZATION OPTION:	"NO" = JACKS WITHOUT KEYING SLOT "YES" = JACKS WITH KEYING SLOT (AVAILABLE ON CONNECTOR SIZE 8 ONLY)
MOUNTING EARS OPTION:	"YES" = JACKS WITH MOUNTING EARS "NO" = JACKS WITHOUT MOUNTING EARS

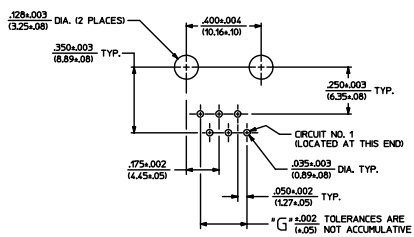
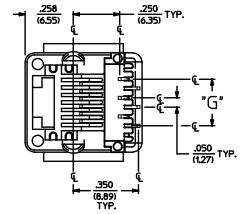
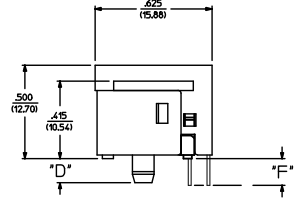
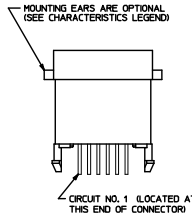
- NOTES:
- 1) MATERIALS: HOUSING- POLYESTER, GLASS FILLED, UL94V-0, COLOR - BLACK  
TERMINALS- PHOSPHOR BRONZE ALLOY, .015/(0.38) THICK
  - 2) TERMINAL PLATING:  
- SELECT GOLD IN CONTACT AREA- 50 MICRONS MIN.  
- SELECT TIN IN PC TAIL AREA- 100 MICRONS MIN.  
WITH OVERALL NICKEL UNDERPLATE: 50 MICRONS MIN.  
- THE PRIMARY SHIPPING CARTON WILL BE LABELED "COMPLIANT TO RoHS DIRECTIVE 2002/95/EC AND ELV ANNEX II OF DIRECTIVE 2000/53/EC. CARTONS WITHOUT THIS LABEL MAY CONTAIN PRODUCT WITH TIN-LEAD IN THE PC TAIL.
  - 3) THESE MODULAR JACKS MEET THE PERFORMANCE REQUIREMENTS OF MOLEX PRODUCT SPECIFICATION PS-42878.
  - 4) CONNECTORS ARE SHIPPED IN THERMOFORMED TRAYS, PER PACKAGING SPECIFICATION PK-42878-492.
  - 5) ALL JACKS ARE DESIGNED TO BE USED WITH .062/(1.57) OR .125/(3.18) THICK P.C. BOARDS.
  - 6) ALL JACKS CONFORM TO AND ACCEPT PLUGS WHICH CONFORM TO FCC RULES AND REGULATIONS PART 68, SUBPART F.
  - 7) ALL JACKS MUST BE CAPABLE OF FITTING INTO MOLEX GAGE G-42410 (CONNECTOR SIZE 6).
  - 8) SEE SHEETS 1 & 4 FOR CONNECTOR SIZE 4.
  - 9) SEE SHEETS 3 & 5 FOR CONNECTOR SIZE 8.
  - 10) ENGRAVED NUMBERS ON HOUSING BODY ARE FOR HOLDING IDENTIFICATION ONLY. THEY ARE NOT INTENDED FOR ASSEMBLY IDENTIFICATION PURPOSES.
  - 11) THIS PART CONFORMS TO CLASS B REQUIREMENTS OF COSMETIC SPECIFICATION PS-45499-002 WITH THE EXCEPTION OF THE "SNK WHICH CONFORMS TO CLASS C REQUIREMENTS.

P. C. BOARD THICKNESS	DIM. "D" (MTG. PEGS)	DIM. "F" (P.C. TAILS)
.062/(1.57)	.128 (3.25)	.120 +.015/-.025 (3.05 +.38/-.63)
.125/(3.18)	.191 (4.85)	.205 +.015/-.025 (5.21 +.38/-.63)

CONNECTOR SIZE	CIRCUIT SIZE	DIM. "G"
6	6	.250 (6.35)
6	4	.150 (3.81)
6	2	.050 (1.27)



PANEL CUT-OUT FOR CONNECTOR SIZE 6



P.C. BOARD LAYOUT FOR CONNECTOR SIZE 6

SIZE 6 MODULAR JACK LOADED WITH 6 TERMINALS SHOWN ABOVE

ADD COSMETIC SPEC EC NO. 1072009-2027 DRAWN/ALLOTTED/REV. 2000/12/01 CHKD/BELL 2000/12/02 APPROVED/ 2000/12/02	QUALITY SYMBOLS ▽=0 ▽=0	GENERAL TOLERANCES (UNLESS SPECIFIED)		DIMENSION STYLE		SCALE 1:1	DESIGN UNITS INCH	THIRD ANGLE PROJECTION
		mm	INCH	IN/MM	IN/MM			
		4 PLACES	±.010	DRAWN BY	DATE	TITLE		
		3 PLACES	±.025	CHECKED BY	DATE	ASSEMBLY, VERTICAL LOW PROFILE MODULAR JACKS (CONNECTOR SIZE 6)		
		2 PLACES	±.050	APPROVED BY	DATE	MOLEX INCORPORATED		
		1 PLACE	±.125	PATERIAL NO.	DOCUMENT NO.	SDA-42878-**** 2 OF 5		
		ANGULAR	±1/2°	SEE SHEET 4		THIS DRAWING CONTAINS INFORMATION THAT IS PROPRIETARY TO MOLEX INCORPORATED AND SHOULD NOT BE USED WITHOUT WRITTEN PERMISSION		

X-NOT TOOLED	PART CHARACTERISTICS				X-NOT TOOLED	PART CHARACTERISTICS				42878	CHARACTERISTICS LEGEND			
	ASSEMBLY ITEM NUMBER	EXTERNAL CONNECTOR SIZE	NUMBER OF POSITIONS	P. C. BOARD THICKNESS		MOUNTING EARS OPTION	ASSEMBLY ITEM NUMBER	EXTERNAL CONNECTOR SIZE	NUMBER OF POSITIONS		P. C. BOARD THICKNESS	MOUNTING EARS OPTION	EXTERNAL CONNECTOR BODY DIMENSIONS: AVAILABLE IN 4, 6, AND 8 POSITION BODY	NUMBER OF CONTACT POSITIONS: CONNECTOR SIZE 4 ACCOMMODATES 2 OR 4 TERMINALS; CONNECTOR SIZE 6 ACCOMMODATES 2, 4, OR 6 TERMINALS; CONNECTOR SIZE 8 ACCOMMODATES 2, 4, 6, 8, OR 10 TERMINALS
	42878-4216	4 POS. BODY	4	.062	YES	42878-4216	6 POS. BODY	6	.062	YES	(SEE SHEET 1 & 2 FOR PART DESCRIPTIONS AND DIMENSIONS)			
	42878-4218	↑	4	.062	NO	42878-4218	↑	6	.062	NO				
	42878-4264	↑	4	.125	YES	42878-4264	↑	6	.125	YES				
	42878-4266	↑	4	.125	NO	42878-4266	↑	6	.125	NO				
	42878-4360	↑	2	.062	YES	42878-4360	↑	4	.062	YES				
	42878-4362	↑	2	.062	NO	42878-4362	↑	4	.062	NO				
	42878-4408	↑	2	.125	YES	42878-4408	↑	4	.125	YES				
	42878-4410	4 POS. BODY	2	.125	NO	42878-4410	↑	4	.125	NO				
						42878-4504	↑	2	.062	YES				
						42878-4506	↑	2	.062	NO				
						42878-4552	↑	2	.125	YES				
						42878-4554	6 POS. BODY	2	.125	NO				

SEE SHEET ONE ILC NO. UCP2004-167 DRAWN: SCHMIDT 2004/03/08 CHECKED: SCHMIDT 2004/03/08 APPROVED: SCHMIDT 2004/03/08 REV. DESCRIPTION	QUALITY SYMBOLS ▽ .0 ▽ .1 ▽ .2	GENERAL TOLERANCES (UNLESS SPECIFIED)		SCALE --- INCH	DESIGN UNITS ---	THIRD ANGLE PROJECTION	REVISION ON CAD ONLY
		DIM INCH	DIM MM	DIMENSION STYLE IN/MM	DATE 1992/04/09	DRAWN BY BAP	TITLE ASSEMBLY, VERTICAL LOW PROFILE MODULAR JACKS (CONNECTOR SIZE 4 & 6)
		4 PLACES ±.005 3 PLACES ±.005 2 PLACES ±.005 1 PLACE ±.005	4 PLACES ±.005 3 PLACES ±.005 2 PLACES ±.005 1 PLACE ±.005	DATE 1992/04/09	CHECKED BY BAP	MATERIAL NO. MOLEX INCORPORATED	SHEET NO. 4 OF 5
		DRAFT WHERE APPLICABLE MUST REMAIN WITHIN DIMENSIONS		DATE 1992/04/09	APPROVED BY RAS	SEE CHART SDA-42878-****	THIS DRAWING CONTAINS INFORMATION THAT IS PROPRIETARY TO MOLEX INCORPORATED AND SHOULD NOT BE USED WITHOUT WRITTEN PERMISSION