

## Excellent Integrated System Limited

Stocking Distributor

Click to view price, real time Inventory, Delivery & Lifecycle Information:

[Molex Connector Corporation](#)  
[0428788554](#)

For any questions, you can email us directly:

[sales@integrated-circuit.com](mailto:sales@integrated-circuit.com)

**MODULAR JACK CHARACTERISTICS LEGEND**

EXTERNAL CONNECTOR BODY DIMENSIONS: (SEE NOTES 8 AND 9) JACKS ARE AVAILABLE IN STANDARD 4, 6, AND 8 POSITION BODY SIZES

NUMBER OF CONTACT POSITIONS:  
 CONNECTOR SIZE 4 CAN ACCOMMODATE 2 OR 4 TERMINALS.  
 CONNECTOR SIZE 6 CAN ACCOMMODATE 2, 4, OR 6 TERMINALS.  
 CONNECTOR SIZE 8 CAN ACCOMMODATE 2, 4, 6, 8, OR 10 TERMINALS.

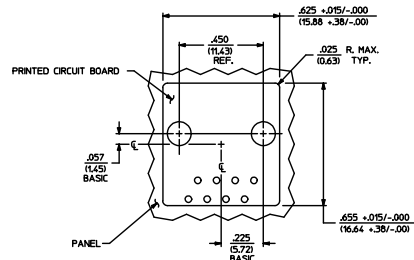
POLARIZATION OPTION:  
 "NO" = JACKS WITHOUT KEYING SLOT  
 "YES" = JACKS WITH KEYING SLOT (AVAILABLE ON CONNECTOR SIZE 8 ONLY)

MOUNTING EARS OPTION:  
 "YES" = JACKS WITH MOUNTING EARS  
 "NO" = JACKS WITHOUT MOUNTING EARS

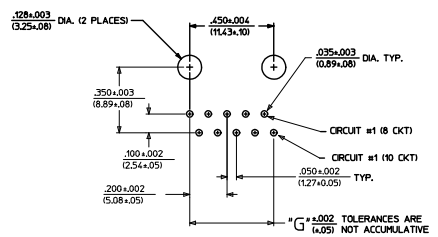
- NOTES:
- 1) MATERIALS: HOUSING- POLYESTER, GLASS FILLED, UL94V-0, COLOR - BLACK  
 TERMINALS- PHOSPHOR BRONZE ALLOY, .015/(0.38) THICK.
  - 2) TERMINAL PLATING  
 SELECT GOLD IN CONTACT AREA: 50 MICRONS MIN.  
 \*SELECT TIN IN PC TAIL AREA: 500 MICRONS MIN.  
 WITH OVERALL NICKEL UNDERPLATE: 50 MICRONS MIN.  
 \*THE PRIMARY SHIPPING CARTON WILL BE LABELED "COMPLIANT TO ROHS DIRECTIVE 2002/95/EC AND ELV ANNEX II OF DIRECTIVE 2000/53/EC". CARTONS WITHOUT THIS LABEL MAY CONTAIN PRODUCT WITH TIN-LEAD IN THE PC TAIL.
  - 3) THESE MODULAR JACKS MEET THE PERFORMANCE REQUIREMENTS OF MOLEX PRODUCT SPECIFICATION PS-42878.
  - 4) CONNECTORS ARE SHIPPED IN THERMOFORMED TRAYS, PER PACKAGING SPECIFICATION PK-42878-492.
  - 5) ALL JACKS ARE DESIGNED TO BE USED WITH .062/(1.57) OR .025/(3.18) THICK P.C. BOARDS.
  - 6) ALL JACKS CONFORM TO AND ACCEPT PLOUGS WHICH CONFORM TO P.C. RULES AND REGULATIONS PART 68, SUBPART F.
  - 7) ALL JACKS MUST BE CAPABLE OF FITTING INTO MOLEX GAGE G-42410 (CONNECTOR SIZE 8).
  - 8) SEE SHEETS 1 & 4 FOR CONNECTOR SIZE 4.
  - 9) SEE SHEETS 2 & 4 FOR CONNECTOR SIZE 6.
  - 10) ENGRAVED NUMBERS ON HOUSING BODY ARE FOR MOLDING IDENTIFICATION ONLY. THEY ARE NOT INTENDED FOR ASSEMBLY IDENTIFICATION PURPOSES.
  - 11) THIS PART CONFORMS TO CLASS B REQUIREMENTS OF COSMETIC SPECIFICATION PS-45499-002 WITH THE EXCEPTION OF THE SNK WHICH CONFORMS TO CLASS C REQUIREMENTS.

P.C. BOARD THICKNESS	DIM. "D" (MTG. PEGS)	DIM. "F" (P.C. TAILS)
.062/(1.57)	.128 (3.25)	.120 +.015/-.025 (3.05 +.38/- .63)
.125/(3.18)	.191 (4.85)	.205 +.015/-.025 (5.21 +.38/- .63)

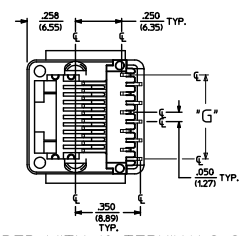
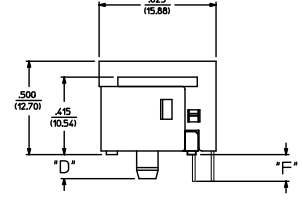
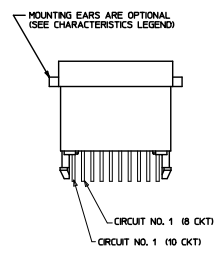
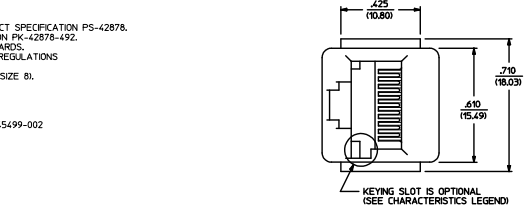
CONNECTOR SIZE	CIRCUIT SIZE	DIM. "G"
8	10	.450 (11.43)
8	8	.350 (8.89)
8	6	.250 (6.35)
8	4	.150 (3.81)
8	2	.050 (1.27)



PANEL CUT-OUT FOR CONNECTOR SIZE 8



P.C. BOARD LAYOUT FOR CONNECTOR SIZE 8  
10 CIRCUIT SHOWN



SIZE 8 MODULAR JACK LOADED WITH 10 TERMINALS SHOWN ABOVE

ADD COSMETIC SPEC EC NO. 1072009-2027 DRAWN: J. LOSTER/ER 2000/12/04 CHKD: BELL 2000/12/02 H2 APPROVED: [Signature] REV. 10/02	QUALITY SYMBOLS ▽=0 ▽=0	GENERAL TOLERANCES (UNLESS SPECIFIED)		DIMENSION STYLE		SCALE 1:1	DESIGN UNITS INCH	THIRD ANGLE PROJECTION
		mm	INCH	IN/MM	DATE			
		4 PLACES	±.010	DRAWN BY	1992/04/09	ASSEMBLY, VERTICAL LOW PROFILE MODULAR JACKS (CONNECTOR SIZE 8) MOLEX INCORPORATED		
		3 PLACES	±.010	CHECKED BY	DATE			
		2 PLACES	± 0.25	DAP	1992/04/09			
		1 PLACE	±.010	APPROVED BY	DATE			
		ANGULAR ±1/2°		RAS	1992/04/09			
		DRAFT WHERE APPLICABLE WITHIN DIMENSIONS		MATERIAL NO. SEE SHEET 5		DOCUMENT NO. SDA-42878-****		SHEET NO. 3 OF 5
		SIZE D THIS DRAWING CONTAINS INFORMATION THAT IS PROPRIETARY TO MOLEX INCORPORATED AND SHOULD NOT BE USED WITHOUT WRITTEN PERMISSION						

X-AXIS TOOLED	PART CHARACTERISTICS					X-AXIS TOOLED	PART CHARACTERISTICS					X-AXIS TOOLED	PART CHARACTERISTICS						
	ASSEMBLY ITEM NUMBER	EXTERNAL CONNECTOR SIZE	NUMBER OF POSITIONS	P. C. BOARD THICKNESS	POLARIZATION OPTION		MOUNTING EARS OPTION	ASSEMBLY ITEM NUMBER	EXTERNAL CONNECTOR SIZE	NUMBER OF POSITIONS	BOARD THICKNESS/P.C. TAIL OPTION		POLARIZATION OPTION	MOUNTING EARS OPTION	ASSEMBLY ITEM NUMBER	EXTERNAL CONNECTOR SIZE	NUMBER OF POSITIONS	BOARD THICKNESS/P.C. TAIL OPTION	POLARIZATION OPTION
	42878-8408	8 POS. BODY	8	.062	NO	YES	42878-8984	8 POS. BODY	4	.062	NO	YES	42878-1001	8 POS. BODY	10	.062	NO	YES	
	42878-8410	↑	↑	↑	NO	NO	42878-8986	↑	↑	↑	NO	NO	42878-1003	↑	↑	.062	NO	NO	
	42878-8456	↑	↑	↑	YES	YES	42878-9032	↑	↑	↑	YES	YES	42878-1025	↑	↑	.125	NO	YES	
	42878-8458	↑	↑	↑	.062	YES	42878-9034	↑	↑	↑	.062	YES	NO	42878-1027	↑	↑	↑	NO	NO
	42878-8504	↑	↑	↑	.125	NO	42878-9080	↑	↑	↑	.125	NO	YES	42878-1037	↑	↑	↑	YES	YES
	42878-8506	↑	↑	↑	↑	NO	42878-9082	↑	↑	↑	↑	NO	NO	42878-1039	8 POS. BODY	10	.125	YES	NO
	42878-8552	↑	↑	↑	↑	YES	42878-9128	↑	↑	↑	↑	YES	YES						
	42878-8554	8	.125	YES	NO	NO	42878-9130	4	.125	YES	NO	NO							
	42878-8696	6	.062	NO	YES	YES	42878-9272	2	.062	NO	YES	YES							
	42878-8698	↑	↑	↑	↑	NO	42878-9274	↑	↑	↑	↑	NO	NO						
	42878-8744	↑	↑	↑	↑	YES	42878-9320	↑	↑	↑	↑	YES	YES						
	42878-8746	↑	↑	↑	.062	YES	42878-9322	↑	↑	↑	.062	YES	NO						
	42878-8792	↑	↑	↑	.125	NO	42878-9368	↑	↑	↑	.125	NO	YES						
	42878-8794	↑	↑	↑	↑	NO	42878-9370	↑	↑	↑	↑	NO	NO						
	42878-8840	↑	↑	↑	↑	YES	42878-9416	↑	↑	↑	↑	YES	YES						
	42878-8842	8 POS. BODY	6	.125	YES	NO	42878-9418	8 POS. BODY	2	.125	YES	NO							

CHARACTERISTICS LEGEND	
EXTERNAL CONNECTOR BODY DIMENSIONS:	AVAILABLE IN 4, 6, AND 8 POSITION BODY
NUMBER OF CONTACT POSITIONS:	CONNECTOR SIZE 4 ACCOMMODATES 2, OR 4 TERMINALS. CONNECTOR SIZE 6 ACCOMMODATES 2, 4, OR 6 TERMINALS. CONNECTOR SIZE 8 ACCOMMODATES 2, 4, 6, 8, OR 10 TERMINALS
POLARIZATION OPTION:	(AVAILABLE ON CONNECTOR SIZE 8 ONLY) "NO" - WITHOUT KEYING SLOT "YES" - WITH KEYING SLOT
MOUNTING EARS OPTION:	"YES" - PART WITH MOUNTING EARS "NO" - PART WITHOUT MOUNTING EARS
(SEE SHEET 3 FOR PART DESCRIPTIONS AND DIMENSIONS)	

SEE SHEET ONE ILC NO. LC2004-167 (FORMAL STANDARD 2004/03/08) APPROVED BY: [Signature] DATE: 2004/03/08	QUALITY SYMBOLS	4 PLACES ±.0 3 PLACES ±.0 2 PLACES ±.0 1 PLACE ±.0 ANGULAR ±1/2°	GENERAL TOLERANCES (UNLESS SPECIFIED) DIM INCH DIM MM	SCALE --- INCH DIMENSION STYLE IN/MM	DESIGN UNITS THIRD ANGLE PROJECTION TITLE ASSEMBLY, VERTICAL LOW PROFILE MODULAR JACKS (CONNECTOR SIZE 8) MOLEX INCORPORATED	REVISIONS DATE DRAWN BY BAP 1992/04/09 CHECKED BY [Signature] BAP 1992/04/09	MATERIAL NO. SEE CHART SDA-42878-**** DOCUMENT NO. SDA-42878-**** SHEET NO. 5 OF 5
	DRAFT WHERE APPLICABLE MUST REMAIN WITHIN DIMENSIONS			THIS DRAWING CONTAINS INFORMATION THAT IS PROPRIETARY TO MOLEX INCORPORATED AND SHOULD NOT BE USED WITHOUT WRITTEN PERMISSION			