

Excellent Integrated System Limited

Stocking Distributor

Click to view price, real time Inventory, Delivery & Lifecycle Information:

[Molex Connector Corporation](#)

[0428788792](#)

For any questions, you can email us directly:

sales@integrated-circuit.com

MODULAR JACK CHARACTERISTICS LEGEND

EXTERNAL CONNECTOR BODY DIMENSIONS: (SEE NOTES 8 AND 9) JACKS ARE AVAILABLE IN STANDARD 4, 6, AND 8 POSITION BODY SIZES

NUMBER OF CONTACT POSITIONS:
 CONNECTOR SIZE 4 CAN ACCOMMODATE 2 OR 4 TERMINALS.
 CONNECTOR SIZE 6 CAN ACCOMMODATE 2, 4, OR 6 TERMINALS.
 CONNECTOR SIZE 8 CAN ACCOMMODATE 2, 4, 6, 8, OR 10 TERMINALS.

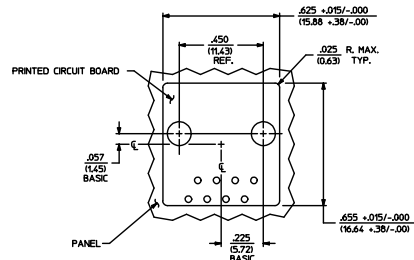
POLARIZATION OPTION:
 "NO"= JACKS WITHOUT KEYING SLOT
 "YES"= JACKS WITH KEYING SLOT (AVAILABLE ON CONNECTOR SIZE 8 ONLY)

MOUNTING EARS OPTION:
 "YES"= JACKS WITH MOUNTING EARS
 "NO"= JACKS WITHOUT MOUNTING EARS

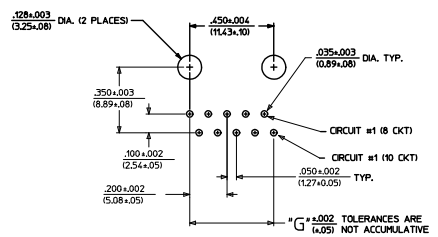
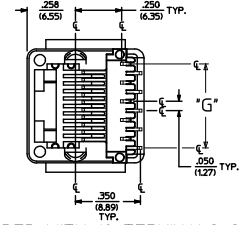
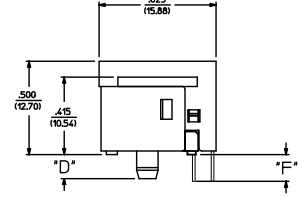
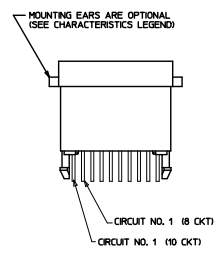
- NOTES:
- 1) MATERIALS: HOUSING- POLYESTER, GLASS FILLED, UL94V-0, COLOR - BLACK
 TERMINALS- PHOSPHOR BRONZE ALLOY, .015/(0.38) THICK.
 - 2) TERMINAL PLATING
 SELECT GOLD IN CONTACT AREA: 50 MICRONS MIN.
 *SELECT TIN IN PC TAIL AREA: 500 MICRONS MIN.
 WITH OVERALL NICKEL UNDERPLATE: 50 MICRONS MIN.
 *THE PRIMARY SHIPPING CARTON WILL BE LABELED "COMPLIANT TO ROHS DIRECTIVE 2002/95/EC AND ELV ANNEX II OF DIRECTIVE 2000/53/EC". CARTONS WITHOUT THIS LABEL MAY CONTAIN PRODUCT WITH TIN-LEAD IN THE PC TAIL.
 - 3) THESE MODULAR JACKS MEET THE PERFORMANCE REQUIREMENTS OF MOLEX PRODUCT SPECIFICATION PS-42878.
 - 4) CONNECTORS ARE SHIPPED IN THERMOFORMED TRAYS, PER PACKAGING SPECIFICATION PK-42878-492.
 - 5) ALL JACKS ARE DESIGNED TO BE USED WITH .062/(1.57) OR .025/(.63) THICK P.C. BOARDS.
 - 6) ALL JACKS CONFORM TO AND ACCEPT PLOWS WHICH CONFORM TO P.C. RULES AND REGULATIONS PART 68, SUBPART F.
 - 7) ALL JACKS MUST BE CAPABLE OF FITTING INTO MOLEX GAGE G-42410 (CONNECTOR SIZE 8).
 - 8) SEE SHEETS 1 & 4 FOR CONNECTOR SIZE 4.
 - 9) SEE SHEETS 2 & 4 FOR CONNECTOR SIZE 6.
 - 10) ENGRAVED NUMBERS ON HOUSING BODY ARE FOR MOLDING IDENTIFICATION ONLY. THEY ARE NOT INTENDED FOR ASSEMBLY IDENTIFICATION PURPOSES.
 - 11) THIS PART CONFORMS TO CLASS B REQUIREMENTS OF COSMETIC SPECIFICATION PS-45499-002 WITH THE EXCEPTION OF THE SNK WHICH CONFORMS TO CLASS C REQUIREMENTS.

P.C. BOARD THICKNESS	DIM. "D" (MTG. PEGS)	DIM. "F" (P.C. TAILS)
.062/(1.57)	.128 (3.25)	.120 +.015/-.025 (3.05 +.38/- .63)
.125/(3.18)	.191 (4.85)	.205 +.015/-.025 (5.21 +.38/- .63)

CONNECTOR SIZE	CIRCUIT SIZE	DIM. "G"
8	10	.450 (11.43)
8	8	.350 (8.89)
8	6	.250 (6.35)
8	4	.150 (3.81)
8	2	.050 (1.27)



PANEL CUT-OUT FOR CONNECTOR SIZE 8



P.C. BOARD LAYOUT FOR CONNECTOR SIZE 8
10 CIRCUIT SHOWN

SIZE 8 MODULAR JACK LOADED WITH 10 TERMINALS SHOWN ABOVE

ADD COSMETIC SPEC EC NO. 1072009-2027 DRAWING: ILLUSTRE PER 2000/12/04 CHKD: BELL 2000/17/02 HZ APPROVED: 2000/17/02 BEL	QUALITY SYMBOLS 4 PLACES 3 PLACES 2 PLACES 1 PLACE	GENERAL TOLERANCES (UNLESS SPECIFIED) mm INCH +.010 +.025 ANGULAR ±1/2°	DIMENSION STYLE IN/MM DRAWN BY DATE 1992/04/09 CHECKED BY DATE 1992/04/09 APPROVED BY DATE 1992/04/09	SCALE 1:1 DESIGN UNITS INCH THIRD ANGLE PROJECTION	TITLE ASSEMBLY, VERTICAL LOW PROFILE MODULAR JACKS (CONNECTOR SIZE 8) MOLEX INCORPORATED	SHEET NO. 3 OF 5	
	MATERIAL NO. SEE SHEET 5		DOCUMENT NO. SDA-42878-****		INCORPORATED AND SHOULD NOT BE USED WITHOUT WRITTEN PERMISSION		
	DRAFT WHERE APPLICABLE WITHIN DIMENSIONS		THIS DRAWING CONTAINS INFORMATION THAT IS PROPRIETARY TO MOLEX				

X-AXIS TOOLED	PART CHARACTERISTICS					X-AXIS TOOLED	PART CHARACTERISTICS					X-AXIS TOOLED	PART CHARACTERISTICS					
	ASSEMBLY ITEM NUMBER	EXTERNAL CONNECTOR SIZE	NUMBER OF POSITIONS	P. C. BOARD THICKNESS	POLARIZATION OPTION		MOUNTING EARS OPTION	ASSEMBLY ITEM NUMBER	EXTERNAL CONNECTOR SIZE	NUMBER OF POSITIONS	BOARD THICKNESS/P.C. TAIL OPTION		POLARIZATION OPTION	MOUNTING EARS OPTION	ASSEMBLY ITEM NUMBER	EXTERNAL CONNECTOR SIZE	NUMBER OF POSITIONS	BOARD THICKNESS/P.C. TAIL OPTION
	42878-8408	8 POS. BODY	8	.062	NO	YES	42878-8984	8 POS. BODY	4	.062	NO	YES	42878-1001	8 POS. BODY	10	.062	NO	YES
	42878-8410	↑	↑	↑	NO	NO	42878-8986	↑	↑	↑	NO	NO	42878-1003	↑	↑	.062	NO	NO
	42878-8456	↑	↑	↑	YES	YES	42878-9032	↑	↑	↑	YES	YES	42878-1025	↑	↑	.125	NO	YES
	42878-8458	↑	↑	↑	.062	YES	42878-9034	↑	↑	↑	.062	YES	42878-1027	↑	↑	↑	NO	NO
	42878-8504	↑	↑	↑	.125	NO	42878-9080	↑	↑	↑	.125	NO	42878-1037	↑	↑	↑	YES	YES
	42878-8506	↑	↑	↑	↑	NO	42878-9082	↑	↑	↑	↑	NO	42878-1039	8 POS. BODY	10	.125	YES	NO
	42878-8552	↑	↑	↑	YES	YES	42878-9128	↑	↑	↑	↑	YES						
	42878-8554	8	.125	YES	NO	NO	42878-9130	4	.125	YES	NO							
	42878-8696	6	.062	NO	YES	YES	42878-9272	2	.062	NO	YES							
	42878-8698	↑	↑	↑	NO	NO	42878-9274	↑	↑	↑	NO	NO						
	42878-8744	↑	↑	↑	YES	YES	42878-9320	↑	↑	↑	YES	YES						
	42878-8746	↑	↑	↑	.062	YES	42878-9322	↑	↑	↑	.062	YES	NO					
	42878-8792	↑	↑	↑	.125	NO	42878-9368	↑	↑	↑	.125	NO	YES					
	42878-8794	↑	↑	↑	↑	NO	42878-9370	↑	↑	↑	↑	NO	NO					
	42878-8840	↑	↑	↑	↑	YES	42878-9416	↑	↑	↑	↑	YES	YES					
	42878-8842	8 POS. BODY	6	.125	YES	NO	42878-9418	8 POS. BODY	2	.125	YES	NO						

CHARACTERISTICS LEGEND	
EXTERNAL CONNECTOR BODY DIMENSIONS:	AVAILABLE IN 4, 6, AND 8 POSITION BODY
NUMBER OF CONTACT POSITIONS:	CONNECTOR SIZE 4 ACCOMMODATES 2, OR 4 TERMINALS. CONNECTOR SIZE 6 ACCOMMODATES 2, 4, OR 6 TERMINALS. CONNECTOR SIZE 8 ACCOMMODATES 2, 4, 6, 8, OR 10 TERMINALS
POLARIZATION OPTION:	(AVAILABLE ON CONNECTOR SIZE 8 ONLY) "NO" - WITHOUT KEYING SLOT "YES" - WITH KEYING SLOT
MOUNTING EARS OPTION:	"YES" - PART WITH MOUNTING EARS "NO" - PART WITHOUT MOUNTING EARS
(SEE SHEET 3 FOR PART DESCRIPTIONS AND DIMENSIONS)	

SEE SHEET ONE ILC NO. LC2004-167 (DRAWN) SCHMIDT 2004/03/08 (CHECKED) SMITH 2004/03/08 (APPROVED) ZAKARIA 2004/03/08 REV.	QUALITY SYMBOLS ▽ 0 ▽ 0	GENERAL TOLERANCES (UNLESS SPECIFIED) <table border="1"> <tr> <th></th> <th>mm</th> <th>INCH</th> </tr> <tr> <td>4 PLACES</td> <td>± .005</td> <td>± .0004</td> </tr> <tr> <td>3 PLACES</td> <td>± .005</td> <td>± .0004</td> </tr> <tr> <td>2 PLACES</td> <td>± .005</td> <td>± .0004</td> </tr> <tr> <td>1 PLACE</td> <td>± .005</td> <td>± .0004</td> </tr> </table>		mm	INCH	4 PLACES	± .005	± .0004	3 PLACES	± .005	± .0004	2 PLACES	± .005	± .0004	1 PLACE	± .005	± .0004	SCALE --- INCH DIMENSION STYLE IN/MM DRAWN BY BAP DATE 1992/04/09 CHECKED BY "DIXIE" DATE 1992/04/09 APPROVED BY RAS DATE 1992/04/09	DESIGN UNITS INCH THIRD ANGLE PROJECTION TITLE ASSEMBLY, VERTICAL LOW PROFILE MODULAR JACKS (CONNECTOR SIZE 8) MOLEX INCORPORATED MATERIAL NO. SEE CHART SDA-42878-**** DOCUMENT NO. SDA-42878-**** SHEET NO. 5 OF 5	REVISIONS REV. 1 THIS DRAWING CONTAINS INFORMATION THAT IS PROPRIETARY TO MOLEX INCORPORATED AND SHOULD NOT BE USED WITHOUT WRITTEN PERMISSION
		mm	INCH																	
4 PLACES	± .005	± .0004																		
3 PLACES	± .005	± .0004																		
2 PLACES	± .005	± .0004																		
1 PLACE	± .005	± .0004																		