

## Excellent Integrated System Limited

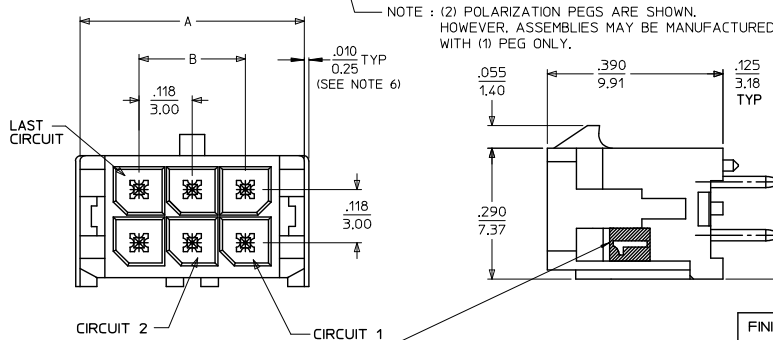
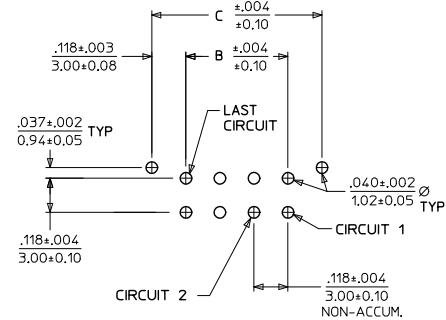
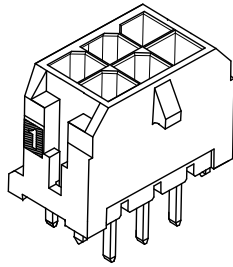
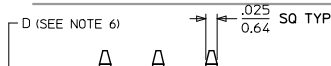
Stocking Distributor

Click to view price, real time Inventory, Delivery & Lifecycle Information:

[Molex Connector Corporation](#)  
[0430450427](#)

For any questions, you can email us directly:

[sales@integrated-circuit.com](mailto:sales@integrated-circuit.com)



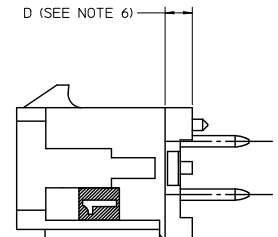
**NOTES:**

- HOUSING MATERIAL: GLASS FILLED LIQUID CRYSTAL POLYMER, UL94V-0, COLOR-BLACK  
TERMINAL MATERIAL: BRASS ALLOY
- FINISH: A = .000060/(0.00152) MIN. REFLOWED MATTE TIN OVER .000050/(0.00127) MIN. NICKEL PLATE.  
(FINISH IS BRIGHT IN APPEARANCE, THICKNESS AS APPLIED PRIOR TO REFLOW)  
B = .000015/(0.00038) MIN. SELECT GOLD IN CONTACT AREA, .000100/(0.00254) MIN. SELECT MATTE TIN ON SOLDER TAILS, BOTH OVER .000050/(0.00127) MIN. NICKEL PLATE.  
C = .000030/(0.00076) MIN. SELECT GOLD IN CONTACT AREA, .000100/(0.00254) MIN. SELECT MATTE TIN ON SOLDER TAILS, BOTH OVER .000050/(0.00127) MIN. NICKEL PLATE.  
D = .000100/(0.00254) MIN. MATTE TIN OVER .000050/(0.00127) MIN. NICKEL PLATE.
- PRODUCT SPECIFICATION: PS-43045
- TRAY PACKAGED: SEE MOLEX DRAWING PK-70873-0314
- MATES WITH MICRO FIT (3.0) RECEPTACLE SERIES 43025
- CIRCUIT SIZES 2-6: "D" IS .265/6.74 FOR .010/0.25 STEP  
CIRCUIT SIZES 8-24: "D" IS .063/1.60 FOR .010/0.25 STEP.
- THIS PART CONFORMS TO CLASS B REQUIREMENTS OF COSMETIC SPECIFICATION PS-45499-002.

1b\_frame\_C\_P\_ME\_T  
Rev. G 2012/01/11

|      | FINISH A     | FINISH B     | FINISH C     | FINISH D     |
|------|--------------|--------------|--------------|--------------|
| CKTS | MATERIAL NO: | MATERIAL NO: | MATERIAL NO: | MATERIAL NO: |
| 02   | 43045-0227   | 43045-0228   | 43045-0229   | 43045-0298   |
| 04   | 43045-0427   | 43045-0428   | 43045-0429   | 43045-0498   |
| 06   | 43045-0627   | 43045-0628   | 43045-0629   | 43045-0698   |
| 08   | 43045-0827   | 43045-0828   | 43045-0829   | 43045-0898   |
| 10   | 43045-1027   | 43045-1028   | 43045-1029   | 43045-1098   |
| 12   | 43045-1227   | 43045-1228   | 43045-1229   | 43045-1298   |
| 14   | 43045-1427   | 43045-1428   | 43045-1429   | 43045-1498   |
| 16   | 43045-1627   | 43045-1628   | 43045-1629   | 43045-1698   |
| 18   | 43045-1827   | 43045-1828   | 43045-1829   | 43045-1898   |
| 20   | 43045-2027   | 43045-2028   | 43045-2029   | 43045-2098   |
| 22   | 43045-2227   | 43045-2228   | 43045-2229   | 43045-2298   |
| 24   | 43045-2427   | 43045-2428   | 43045-2429   | 43045-2498   |

|   |             |  |  |       |                          |   |  |                        |                           |  |
|---|-------------|--|--|-------|--------------------------|---|--|------------------------|---------------------------|--|
| REVISE FINISH A<br>EC NO: UCP2016-0464<br>DRWN: JPOX<br>CHKD: SIOSEK<br>APPR: SMITH |             | QUALITY SYMBOLS<br><br>▽=0<br>▽=0<br>▽=0 | GENERAL TOLERANCES (UNLESS SPECIFIED)                |       | DIMENSION STYLE<br>IN/MM |   | SCALE<br>---   | DESIGN UNITS<br>METRIC | THIRD ANGLE<br>PROJECTION |  |
|   |             |  | mm   | INCH  | DRAWN BY<br>DATE         | TITLE   |  |                        |                           |  |
| G2  | DESCRIPTION | ▽=0<br>▽=0<br>▽=0                        | 4 PLACES ±   | ---   | SAMIEC                   | 2000/03/15  | MICRO FIT (3.0)<br>DUAL ROW VERTICAL<br>THRU HOLE HEADER ASS'Y<br><br><b>molex</b> |                        |                           |  |
|   |             |  | 3 PLACES ±   | ±.010 | CHECKED BY               | DATE  |  |                        |                           |  |
|   |             |  | 2 PLACES ±   | ±.014 | MUELLER                  | 2000/03/15  |  |                        |                           |  |
|   |             |  | 1 PLACE ±  | 0.36  | APPROVED BY              | DATE  |  |                        |                           |  |
|   |             |  | 0 PLACE ±  | ---   | EDGELY                   | 2000/03/15  |  |                        |                           |  |
| REV   | DESCRIPTION |  | ANGULAR ±1/2°  |       | MATERIAL NO.             |   | DOCUMENT NO.   |                        | SHEET NO.                 |  |
|   |             |  | DRAFT WHERE APPLICABLE MUST REMAIN WITHIN DIMENSIONS |       | SEE CHART                |   | SD-43045-010   |                        | 1 OF 1                    |  |
|   |             |  |  |       | SIZE C                   | THIS DRAWING CONTAINS INFORMATION THAT IS PROPRIETARY TO MOLEX INCORPORATED AND SHOULD NOT BE USED WITHOUT WRITTEN PERMISSION |  |                        |                           |  |



| CKTS | A     | B     | C     |
|------|-------|-------|-------|
| 02   | .262  | NA    | .236  |
|      | 6.65  |       | 6.00  |
| 04   | .380  | .118  | .354  |
|      | 9.65  | 3.00  | 9.00  |
| 06   | .498  | .236  | .472  |
|      | 12.65 | 6.00  | 12.00 |
| 08   | .616  | .354  | .591  |
|      | 15.65 | 9.00  | 15.00 |
| 10   | .734  | .472  | .709  |
|      | 18.65 | 12.00 | 18.00 |
| 12   | .852  | .591  | .827  |
|      | 21.65 | 15.00 | 21.00 |
| 14   | .970  | .709  | .945  |
|      | 24.65 | 18.00 | 24.00 |
| 16   | 1.088 | .827  | 1.063 |
|      | 27.65 | 21.00 | 27.00 |
| 18   | 1.206 | .945  | 1.181 |
|      | 30.65 | 24.00 | 30.00 |
| 20   | 1.325 | 1.063 | 1.299 |
|      | 33.65 | 27.00 | 33.00 |
| 22   | 1.443 | 1.181 | 1.417 |
|      | 36.65 | 30.00 | 36.00 |
| 24   | 1.561 | 1.299 | 1.535 |
|      | 39.65 | 33.00 | 39.00 |