

Excellent Integrated System Limited

Stocking Distributor

Click to view price, real time Inventory, Delivery & Lifecycle Information:

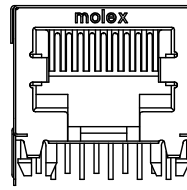
[Molex Connector Corporation](#)
[0432498004](#)

For any questions, you can email us directly:

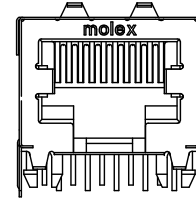
sales@integrated-circuit.com

- NOTES:
- 1) MATERIAL:
 - HOUSING: NYLON(PA), GLASS FILLED, UL94V-0, COLOR: BLACK
 - INSULATOR: NYLON(PA), GLASS FILLED, UL94V-0, COLOR: BLACK
 - TERMINALS: PHOSPHOR BRONZE, .012/(0.30) THICK
 - SHIELD: BRASS, .007/(0.18) THICK
 - 2) FINISH:
 - TERMINALS:
 - A = SELECT GOLD IN CONTACT AREA: 50 MICROINCHES / 1.27 MICROMETERS MIN., *SELECT TIN IN PC TAIL AREA: 100 MICROINCHES / 2.54 MICROMETERS MIN., WITH OVERALL NICKEL UNDERPLATE: 50 MICROINCHES / 1.27 MICROMETERS MIN.
 - B = SELECT GOLD IN CONTACT AREA: 30 MICROINCHES / 0.76 MICROMETERS MIN., *SELECT TIN IN PC TAIL AREA: 100 MICROINCHES / 2.54 MICROMETERS MIN., WITH OVERALL NICKEL UNDERPLATE: 50 MICROINCHES / 1.27 MICROMETERS MIN.
 - SHIELD:
 - *100 MICROINCHES / 2.54 MICROMETERS NICKEL OVER 50 MICROINCHES / 1.27 MICROMETERS COPPER UNDERPLATE, PCB GROUND TABS DIPPED IN TIN
 - *THE PRIMARY SHIPPING CARTON WILL BE LABELED "COMPLIANT TO RoHS DIRECTIVE 2002/95/EC AND ELV ANNEX II OF DIRECTIVE 2000/53/EC". CARTONS WITHOUT THIS LABEL MAY CONTAIN PRODUCT WITH TIN-LEAD IN THE PC TAILS AND/OR SHIELD.
 - 3) PRODUCT SPECIFICATION AND PROCESSING PARAMETERS: PS-43249.
 - 4) PACKAGING SPECIFICATION:
 - UNSHIELDED CONNECTOR ASSEMBLIES PACKAGED IN THERMOFORMED TRAYS PER MOLEX PACKAGING SPECIFICATION PK-43249-004.
 - UNSHIELDED CONNECTOR ASSEMBLIES PACKAGED IN TUBES PER MOLEX PACKAGING SPECIFICATION PK-43249-005.
 - SHIELDED CONNECTOR ASSEMBLIES PACKAGED IN THERMOFORMED TRAYS PER MOLEX PACKAGING SPECIFICATION PK-44050-004.
 - 5) MATES WITH: MODULAR PLUGS THAT CONFORM TO FCC REGULATION PART 68.5.
 - 6) SEE SHEET 3 FOR SHIELDED JACK ASSEMBLY.
 - 7) SEE SHEETS 5 & 6 FOR P.C. BOARD LAYOUTS.
 - 8) ALL UNTOLERANCED DIMENSIONS ARE SHOWN FOR REFERENCE ONLY.
 - 9) THIS PART CONFORMS TO CLASS B REQUIREMENTS OF COSMETIC SPECIFICATION PS-45499-002.
 - 10) THIS PART CONFORMS TO FCC REGULATION 68.5 AND TIA 1096 FOR MODULAR JACKS.

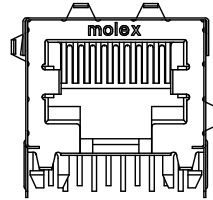
SIDE/TOP GROUND TAB OPTIONS FOR SHIELDS



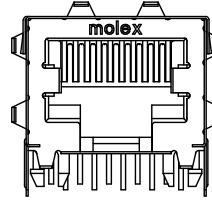
OPTION "A"
NO TOP OR SIDE TABS



OPTION "B"
TOP TABS

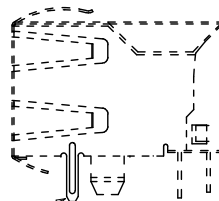


OPTION "C"
TOP AND STAGGERED SIDE TABS

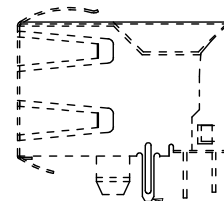


OPTION "D"
TOP AND SIDE TABS

BOTTOM PCB GROUND TAB OPTIONS FOR SHIELDS



OPTION "E"
OPTIONAL FRONT POSITION



OPTION "F"
OPTIONAL REAR POSITION

NOTE: EITHER PCB GROUND TAB OPTION IS AVAILABLE ON ALL SIDE/TOP TAB CONFIGURATIONS

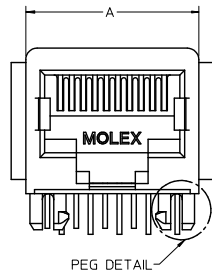
DRAWING LEGEND

- SHEET 1- NOTES, GROUND TAB OPTIONS
- SHEET 2- UNSHIELDED MODULAR JACK
- SHEET 3- SHIELDED MODULAR JACK WITH OPTIONAL SIDE/TOP GROUND TABS & BOTTOM GROUND TAB WITH OPTIONAL POSITION.
- SHEET 4- PART NUMBER CHARTS
- SHEET 5- FOOTPRINT LAYOUT FOR 8 POSITION HOUSING
- SHEET 6- FOOTPRINT LAYOUT FOR 6 POSITION HOUSING

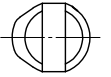
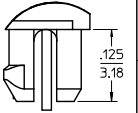
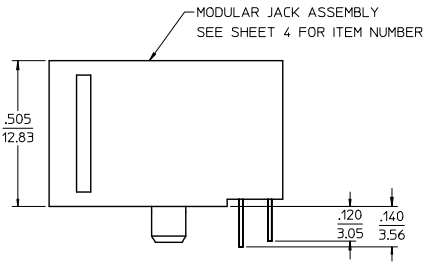
| | | | | | | | | | |
|---|-------------------------------|---------------------------------------|-----------------------|---|--------------------|--|----------------------|------------------------|--|
| ADDED NOTE 10 EC NO: UCP2009-0740 DRAWN: JACUSTE/ELE/2008/09/29 CHKD: J.BELL APPR: S.MITH 2008/10/03 2008/10/03 | QUALITY SYMBOLS ▽=0 ▽=0 | GENERAL TOLERANCES (UNLESS SPECIFIED) | | DIMENSION STYLE IN/MM | | SCALE 4:1 | DESIGN UNITS INCH | THIRD ANGLE PROJECTION | |
| | | 4 PLACES ± --- ± --- | 3 PLACES ± --- ± .010 | DRAWN BY JTR | DATE 1993/06/23 | TITLE LOW PROFILE RIGHT ANGLE MODULAR JACK ASSEMBLY | | | |
| | | 2 PLACES ± 0.25 ± --- | 1 PLACE ± --- ± --- | CHECKED BY JTR | DATE 1993/06/23 | APPROVED BY RAS | | | |
| | | ANGULAR ± 1/2° | | MATERIAL NO. SEE SHEET 4 | | DOCUMENT NO. SDA-43249 | | MOLEX INCORPORATED | |
| DRAFT WHERE APPLICABLE MUST REMAIN WITHIN DIMENSIONS | | SIZE C | | THIS DRAWING CONTAINS INFORMATION THAT IS PROPRIETARY TO MOLEX INCORPORATED AND SHOULD NOT BE USED WITHOUT WRITTEN PERMISSION | | | | | |

UNSHIELDED MODULAR JACK

8 POSITION LOADED 10 SIZE SHOWN

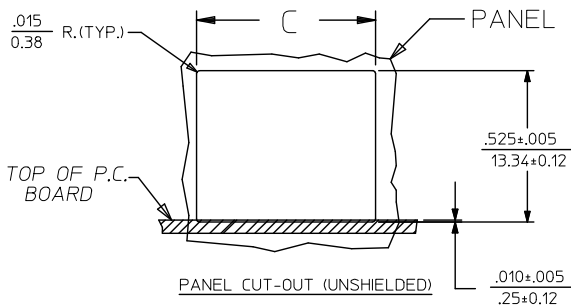
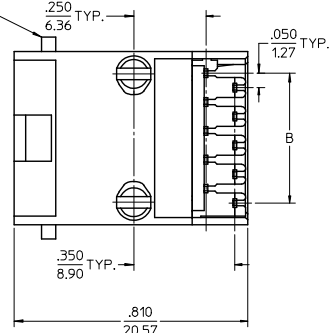


PEG DETAIL



PEG DETAIL
SCALE 8:1

OPTIONAL FLANGE
USED FOR FLUSH
MODULAR JACK

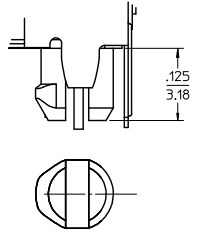
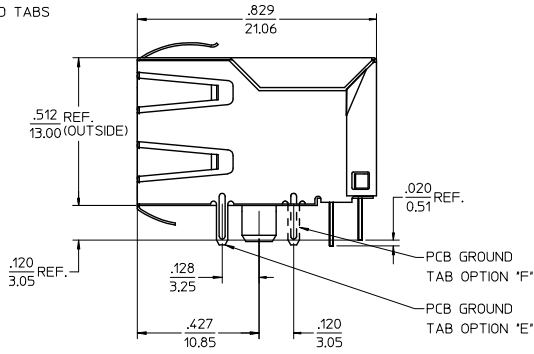
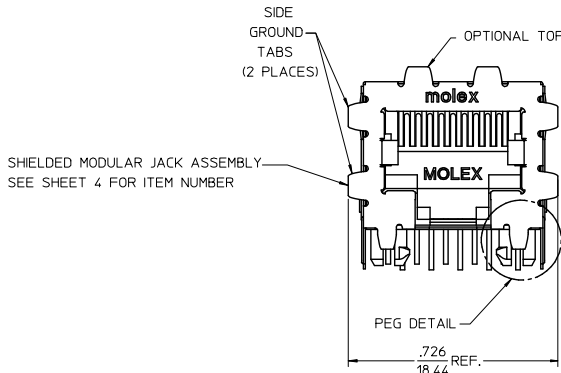


| HOUSING SIZE | CIRCUIT SIZE | DIM. A | DIM. B | DIM. C |
|--------------|--------------|---------------------------|---------------------------|---------------------------|
| 8 | 10 | .600±.005 (15.24±0.13) | .450±.005 (11.43±0.13) | .620±.005 (15.75±0.13) |
| 8 | 8 | .600±.005 (15.24±0.13) | .350±.005 (8.89±0.13) | .620±.005 (15.75±0.13) |
| 8 | 4 | .600±.005 (15.24±0.13) | .150±.005 (3.81±0.13) | .620±.005 (15.75±0.13) |
| 8 | 6 | .600±.005 (15.24±0.13) | .250±.005 (6.35±0.13) | .620±.005 (15.75±0.13) |
| 6 | 6 | .520±.005 (13.21±0.13) | .250±.005 (6.35±0.13) | .540±.005 (13.72±0.13) |
| 6 | 4 | .520±.005 (13.21±0.13) | .150±.005 (3.81±0.13) | .540±.005 (13.72±0.13) |
| 6 | 2 | .520±.005 (13.21±0.13) | .050±.005 (1.27±0.13) | .540±.005 (13.72±0.13) |

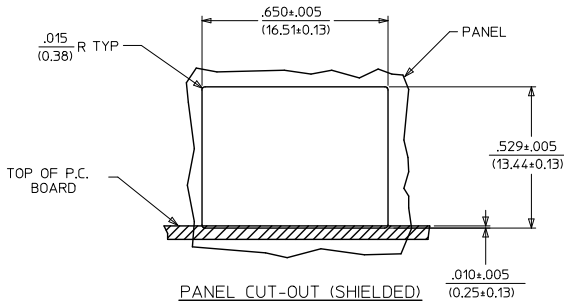
| | | | | | | | | | |
|--|-------------------------------|---------------------------------------|-----------------------|---------------------------|--------------------|--|----------------------|------------------------|--|
| SEE SHEET 1 IEC NO: UCP2009-0740 DRAWN: JACUSTE/ER/2008/09/29 CHKD: BELL APPROV: SMITH 2008/10/03 2008/10/03 | QUALITY SYMBOLS ▽=0 ▽=0 | GENERAL TOLERANCES (UNLESS SPECIFIED) | | DIMENSION STYLE IN/MM | | SCALE 4:1 | DESIGN UNITS INCH | THIRD ANGLE PROJECTION | |
| | | 4 PLACES ± --- ± --- | 3 PLACES ± --- ± .010 | DRAWN BY JTR | DATE 1993/06/23 | TITLE LOW PROFILE RIGHT ANGLE MODULAR JACK ASSEMBLY | | | |
| | | 2 PLACES ± 0.25 ± --- | 1 PLACE ± --- ± --- | CHECKED BY JTR | DATE 1993/06/23 | | | | |
| | | ANGULAR ± 1/2° | | APPROVED BY RAS | | DATE 1993/06/23 | MOLEX INCORPORATED | | |
| DRAFT WHERE APPLICABLE MUST REMAIN WITHIN DIMENSIONS | | MATERIAL NO. SEE SHEET 4 | | DOCUMENT NO. SDA-43249 | | SHEET NO. 2 OF 6 | | | |

MODULAR JACK W/ .007" THICK SHIELD AND OPTIONAL GROUND TABS

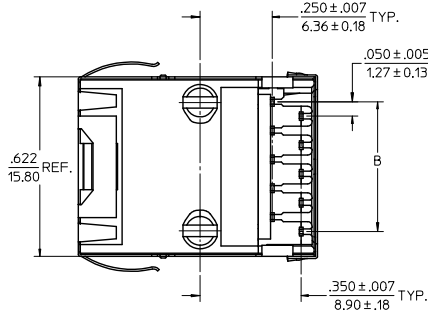
8 LOADED 10 VERSION SHOWN WITH GROUND TAB OPTIONS 'D' AND 'E'



PEG DETAIL
SCALE 8:1



PANEL CUT-OUT (SHIELDED)



DESCRIPTION OF GROUND TAB OPTIONS:
(SEE SHEET 4 FOR AVAILABLE COMBINATIONS OF OPTIONS)

| GROUND TAB OPTION | DESCRIPTION |
|-------------------|----------------------------------|
| A | NO GROUND TABS |
| B | TOP TABS ONLY |
| C | STAGGERED SIDE TABS |
| D | TOP AND SIDE TABS |
| E | PCB GROUND TAB IN FRONT POSITION |
| F | PCB GROUND TAB IN REAR POSITION |

| HOUSING SIZE | CIRCUIT SIZE | B |
|--------------|--------------|-------------------------|
| 8 | 10 | .450±.005 11.43±0.13 |
| 8 | 8 | .350±.005 8.89±0.13 |

| | | | | | | | |
|---|-------------------------------|---|--|--------------|-----------------------------|------------------------|---------------------|
| SEE SHEET 1 IEC NO: UCP2009-0740 DRAWN: JACUSTE/ELE/2008/09/29 CHKD: BELL 2008/10/03 APPR: SMITH 2008/10/03 K1 | QUALITY SYMBOLS ▽=0 ▽=0 | GENERAL TOLERANCES (UNLESS SPECIFIED) mm INCH 4 PLACES ± --- ± --- 3 PLACES ± --- ± .010 2 PLACES ± 0.25 ± --- 1 PLACE ± --- ± --- ANGULAR ± 1/2° | DIMENSION STYLE IN/MM DRAWN BY DATE JTR 1993/06/23 CHECKED BY DATE JTR 1993/06/23 APPROVED BY DATE RAS 1993/06/23 | SCALE 4:1 | DESIGN UNITS INCH | THIRD ANGLE PROJECTION | |
| | | DRAFT WHERE APPLICABLE MUST REMAIN WITHIN DIMENSIONS | | | MATERIAL NO. SEE SHEET 4 | MOLEX INCORPORATED | SHEET NO. 3 OF 6 |
| | | SEE SHEET 4 | | | DOCUMENT NO. SDA-43249 | MOLEX INCORPORATED | |
| | | THIS DRAWING CONTAINS INFORMATION THAT IS PROPRIETARY TO MOLEX INCORPORATED AND SHOULD NOT BE USED WITHOUT WRITTEN PERMISSION | | | | | |

FLUSH MOUNT (UNSHIELDED)

| ASSEMBLY ITEM NUMBER | CONNECTOR SIZE | NUMBER OF CIRCUITS | TERMINAL PLATING OPTION |
|----------------------|----------------|--------------------|-------------------------|
| 43249-8001 | 8 | 10 | A |
| 43249-8004 | 8 | 8 | A |
| 43249-8010 | 8 | 6 | A |
| 43249-6001 | 6 | 6 | A |
| 43249-6004 | 6 | 4 | A |
| 43249-6007 | 6 | 2 | A |

SHIELDED, .007" THICK

| ASSEMBLY ITEM NUMBER | CONN. SIZE | NUMBER OF CIRCUITS | TERMINAL PLATING OPTION | SIDE/TOP PANEL GROUND TAB OPTION | PCB GROUND TAB OPTION | PACKAGING OPTION |
|----------------------|------------|--------------------|-------------------------|----------------------------------|-----------------------|------------------|
| 43249-8900 | 8 | 10 | A | A | E | TRAY |
| 43249-8901 | 8 | 10 | A | B | E | TRAY |
| 43249-8902 | 8 | 10 | A | C | E | TRAY |
| 43249-8903 | 8 | 10 | A | D | E | TRAY |
| 43249-8908 | 8 | 10 | A | A | F | TRAY |
| 43249-8909 | 8 | 10 | A | B | F | TRAY |
| 43249-8910 | 8 | 10 | A | C | F | TRAY |
| 43249-8911 | 8 | 10 | A | D | F | TRAY |
| 43249-8916 | 8 | 8 | A | A | E | TRAY |
| 43249-8917 | 8 | 8 | A | B | E | TRAY |
| 43249-8918 | 8 | 8 | A | C | E | TRAY |
| 43249-8919 | 8 | 8 | A | D | E | TRAY |
| 43249-8920 | 8 | 8 | B | A | E | TRAY |
| 43249-8924 | 8 | 8 | A | A | F | TRAY |
| 43249-8925 | 8 | 8 | A | B | F | TRAY |
| 43249-8926 | 8 | 8 | A | C | F | TRAY |
| 43249-8927 | 8 | 8 | A | D | F | TRAY |

FLANGELESS (UNSHIELDED)

| ASSEMBLY ITEM NUMBER | CONNECTOR SIZE | NUMBER OF CIRCUITS | TERMINAL PLATING OPTION |
|----------------------|----------------|--------------------|-------------------------|
| 43249-8101 | 8 | 10 | A |
| 43249-8102 | 8 | 10 | B |
| 43249-8104 | 8 | 8 | A |
| 43249-8105 | 8 | 8 | B |
| 43249-8116 | 8 | 6 | A |
| 43249-8119 | 8 | 4 | A |
| 43249-6101 | 6 | 6 | A |
| 43249-6104 | 6 | 4 | A |
| 43249-6107 | 6 | 2 | A |

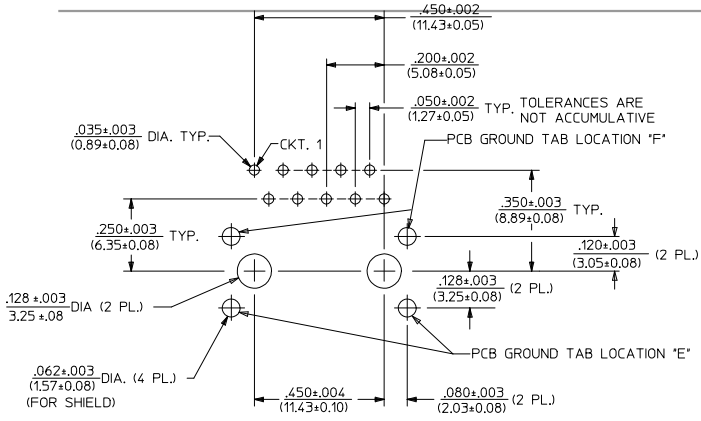
FLANGELESS (UNSHIELDED)

(SHIPPED IN TUBES)

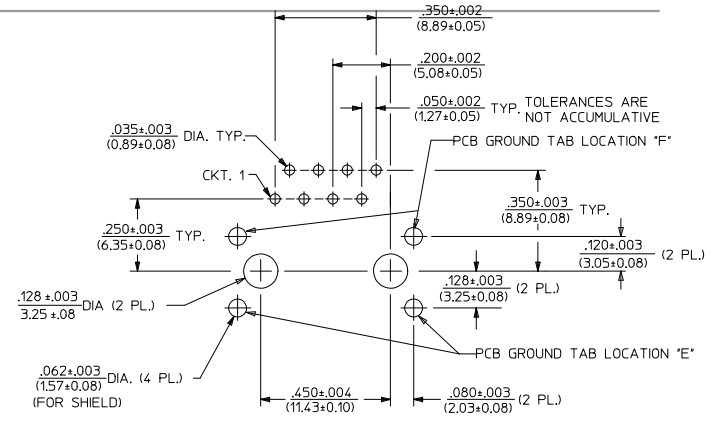
| | | | |
|------------|---|---|---|
| 43249-6501 | 6 | 6 | A |
| 43249-6504 | 6 | 4 | A |

| | | | | | | | |
|---|--|--|-----------------|--------------|--------------|--|--|
| SEE SHEET 1 EC NO: UCP2009-0740 DRAWN: JACOSTER/ER/2008/09/29 CHKD: BELL 2008/10/03 APPR: SMITH 2008/10/03 REV: K1 | QUALITY SYMBOLS | GENERAL TOLERANCES (UNLESS SPECIFIED) | DIMENSION STYLE | SCALE | DESIGN UNITS | THIRD ANGLE PROJECTION | |
| | ▽=0 ▽=0 | mm INCH 4 PLACES ± --- ± --- 3 PLACES ± --- ± .010 2 PLACES ± 0.25 ± --- 1 PLACE ± --- ± --- ANGULAR ± 1/2° | IN/MM | 4:1 | INCH | DRAWN BY DATE JTR 1993/06/23 CHECKED BY DATE JTR 1993/06/23 APPROVED BY DATE RAS 1993/06/23 | TITLE LOW PROFILE RIGHT ANGLE MODULAR JACK ASSEMBLY MOLEX INCORPORATED |
| | DRAFT WHERE APPLICABLE MUST REMAIN WITHIN DIMENSIONS | SEE CHART | MATERIAL NO. | DOCUMENT NO. | SHEET NO. | | |
| | | | SDA-43249 | | 4 OF 6 | | |

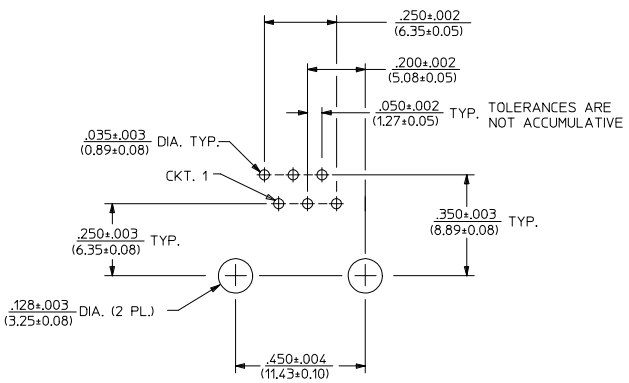
THIS DRAWING CONTAINS INFORMATION THAT IS PROPRIETARY TO MOLEX INCORPORATED AND SHOULD NOT BE USED WITHOUT WRITTEN PERMISSION



PC BOARD LAYOUT FOR SIZE 8, 10 CIRCUIT
(COMPONENT SIDE OF BOARD)



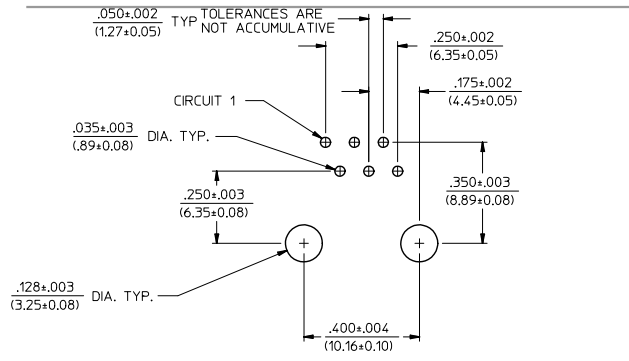
PC BOARD LAYOUT FOR SIZE 8, 8 CIRCUIT
(COMPONENT SIDE OF BOARD)



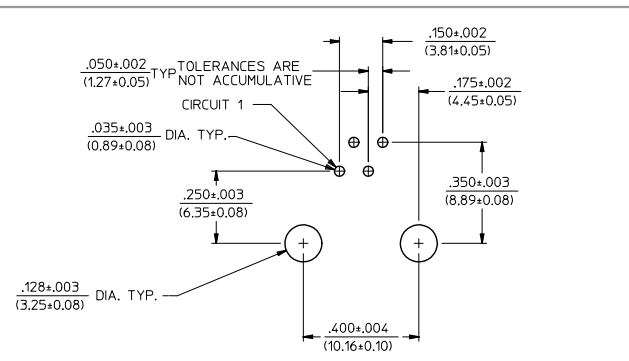
PC BOARD LAYOUT FOR SIZE 8, 6 CIRCUIT
(COMPONENT SIDE OF BOARD)

NOTES:
1. RECOMMENDED PCB THICKNESS: .062 ± .005 / (1.57 ± 0.13)

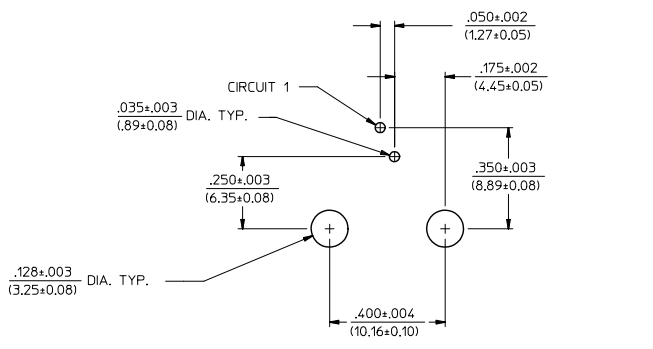
| | | | | | | |
|--|-----------------|--|---|--|--------------|------------------------|
| SEE SHEET 1 EC NO.: UCP2009-0740 DRAWN: JACOSTER/EZ2008/09/29 CHKD: BELLE 2008/10/03 APPROV: SMITH 2008/10/03 K1 REV | QUALITY SYMBOLS | GENERAL TOLERANCES (UNLESS SPECIFIED) | DIMENSION STYLE | SCALE | DESIGN UNITS | THIRD ANGLE PROJECTION |
| | ▼=0 ▽=0 | mm INCH 4 PLACES ± --- ± --- 3 PLACES ± --- ± .010 2 PLACES ± 0.25 ± --- 1 PLACE ± --- ± --- ANGULAR ± 1/2° | IN/MM DRAWN BY DATE JTR 1993/06/23 CHECKED BY DATE JTR 1993/06/23 APPROVED BY DATE RAS 1993/06/23 | 4:1 | INCH | THIRD ANGLE PROJECTION |
| | | DRAFT WHERE APPLICABLE MUST REMAIN WITHIN DIMENSIONS | MATERIAL NO. | TITLE LOW PROFILE RIGHT ANGLE MODULAR JACK ASSEMBLY | | |
| | | | SEE SHEET 4 SIZE C | MOLEX INCORPORATED DOCUMENT NO. SDA-43249 SHEET NO. 5 OF 6 | | |



PC BOARD LAYOUT FOR SIZE 6, 6 CIRCUIT
(COMPONENT SIDE OF BOARD)



PC BOARD LAYOUT FOR SIZE 6, 4 CIRCUIT
(COMPONENT SIDE OF BOARD)



PC BOARD LAYOUT FOR SIZE 6, 2 CIRCUIT
(COMPONENT SIDE OF BOARD)

NOTES:
1. RECOMMENDED PCB THICKNESS: .062±.005/(1.57±0.13)

| | | | | | | | | | | | |
|---|-------------------------------|--|--|-----------------|--|--|--------------|---|--|--|--|
| SEE SHEET 1 EC NO: UCP2009-0740 DRAWN: J. CLUSTER (E) 2008/09/29 CHKD: J. BELL 2008/10/03 APPR: S. SMITH 2008/10/03 | QUALITY SYMBOLS ▽=0 ▽=0 | GENERAL TOLERANCES (UNLESS SPECIFIED) | | DIMENSION STYLE | | SCALE | DESIGN UNITS | THIRD ANGLE PROJECTION | | | |
| | | | | IN/MM | | 4:1 | INCH | | | | |
| | | | | DRAWN BY DATE | | DATE | | LOW PROFILE RIGHT ANGLE MODULAR JACK ASSEMBLY MOLEX INCORPORATED | | | |
| | | | | CHECKED BY DATE | | DATE | | | | | |
| | | APPROVED BY DATE | | DATE | | MATERIAL NO. SDA-43249 DOCUMENT NO. 6 OF 6 THIS DRAWING CONTAINS INFORMATION THAT IS PROPRIETARY TO MOLEX INCORPORATED AND SHOULD NOT BE USED WITHOUT WRITTEN PERMISSION | | | | | |
| | | ANGULAR ±1/2° | | DATE | | | | | | | |
| | | DRAFT WHERE APPLICABLE MUST REMAIN WITHIN DIMENSIONS | | SEE SHEET 4 | | | | | | | |