

Excellent Integrated System Limited

Stocking Distributor

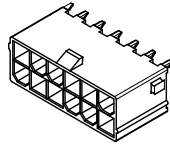
Click to view price, real time Inventory, Delivery & Lifecycle Information:

[Molex Connector Corporation](#)
[0435880010](#)

For any questions, you can email us directly:

sales@integrated-circuit.com

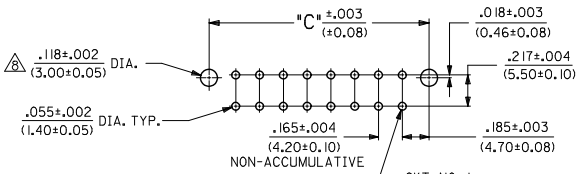
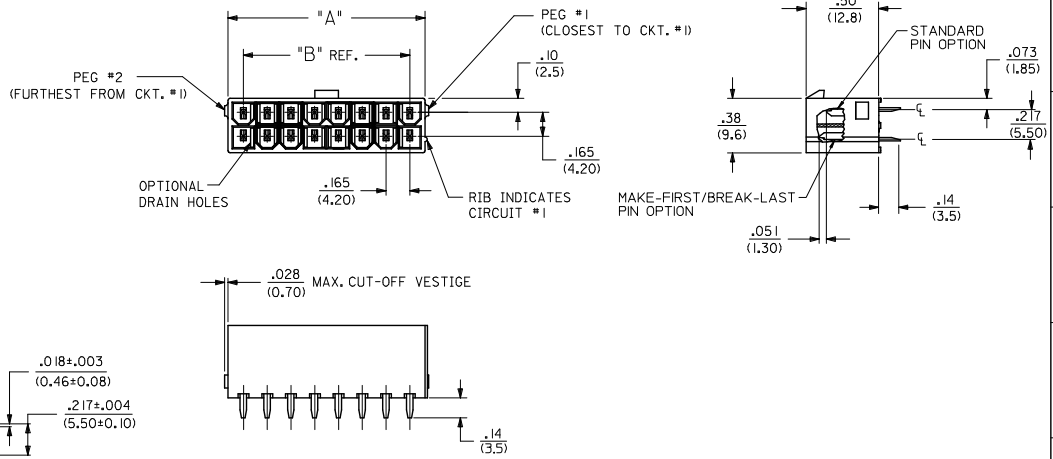
| CIRCUIT SIZE | DIM. "A" | DIM. "B" | DIM. "C" |
|--------------|----------------|----------------|------------------|
| 2 | .21 (5.4) | — | .370 (9.40) |
| 4 | .38 (9.6) | .17 (4.2) | .535 (13.60) |
| 6 | .54 (13.8) | .33 (8.4) | .701 (17.80) |
| 8 | .71 (18.0) | .50 (12.6) | .866 (22.00) |
| 10 | .87 (22.2) | .66 (16.8) | 1.031 (26.20) |
| 12 | 1.04 (26.4) | .83 (21.0) | 1.197 (30.40) |
| 14 | 1.20 (30.6) | .99 (25.2) | 1.362 (34.60) |
| 16 | 1.37 (34.8) | 1.16 (29.4) | 1.528 (38.80) |
| 18 | 1.54 (39.0) | 1.32 (33.6) | 1.693 (43.00) |
| 20 | 1.70 (43.2) | 1.49 (37.8) | 1.858 (47.20) |
| 22 | 1.87 (47.4) | 1.65 (42.0) | 2.024 (51.40) |
| 24 | 2.03 (51.6) | 1.82 (46.2) | 2.189 (55.60) |



12 CKT SHOWN

NOTES:

- MATERIALS:
HOUSING MATERIAL AND OPTIONS: SEE CHART
TERMINALS: BRASS
- TERMINAL PLATING:
A = .000035/(0.00089) MIN. BRIGHT TIN OVER
.000020/(0.00051) MIN. COPPER OVERALL
B = .000030/(0.00076) MIN. SELECT GOLD AND
.000100/(0.00254) MIN. MATTE TIN OVER
.000050/(0.00127) MIN. NICKEL OVERALL
C = .000100/(0.00254) MIN. BRIGHT TIN OVER
.000050/(0.00127) MIN. NICKEL OVERALL
D = .000100/(0.00254) MIN. MATTE TIN OVER
.000050/(0.00127) MIN. NICKEL OVERALL
- PRODUCT SPECIFICATION: PS-5556-001
- PACKAGING: SEE CHART.
- PART MATES WITH MINI-FIT JR. RECEPTACLE #5557.
- PARTS ARE NOT DESIGNED FOR CURRENT SHARING.
- CONNECTOR ASSEMBLIES ARE NOT DESIGNED TO BE MATED OR UNMATED WHILE CIRCUITS ARE LIVE.
- LOCATION OF .118±.002/(3.00±0.05) DIAMETER HOLES ON P.C. BOARD IS FOR OPTIONAL PEGS.
- PART CONFORMS TO CLASS 'B' REQUIREMENTS OF COSMETIC SPECIFICATION PS-45499-002 EXCEPT IN AREA OF PEG CUT-OFF.
- 4 CIRCUIT PARTS WILL HAVE PEG DESIGN A. ALL OTHER CIRCUIT SIZES WILL HAVE PEG DESIGN B.

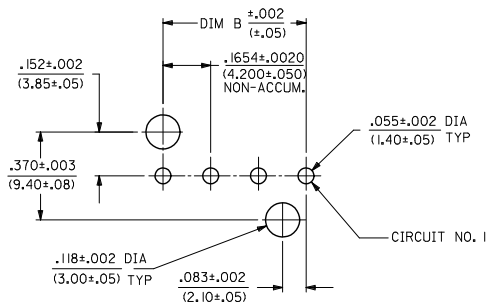
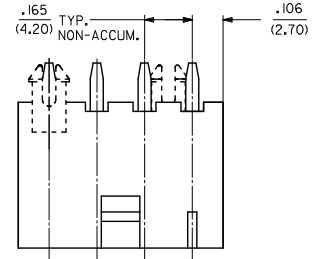
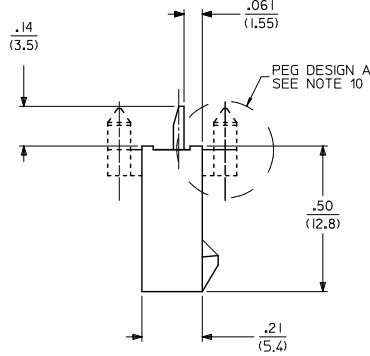
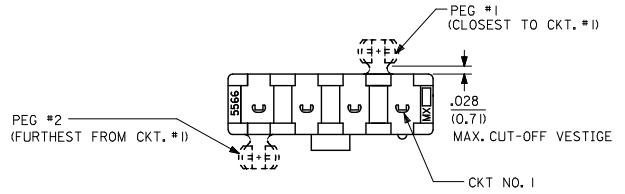
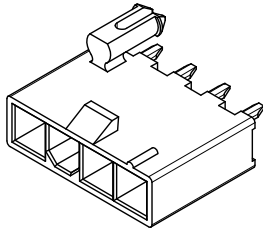


RECOMMENDED HOLE LAYOUT FOR .070/(1.78) MAX. THICK P.C. BOARD VIEWED FROM COMPONENT SIDE (SEE NOTE 8)

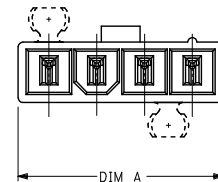
| QUALITY SYMBOLS | GENERAL TOLERANCES (UNLESS SPECIFIED) | | DIMENSION STYLE | | SCALE | DESIGN UNITS | THIRD ANGLE PROJECTION |
|---|---------------------------------------|--------------|-----------------|----------------|------------|--------------|---|
| | mm | INCH | IN/MM | DATE | | | |
| ▽=0 | 4 PLACES ± | --- | --- | 1995/07/19 | 2:1 | METRIC | 2-24 CKT VERT HDR ASSY W/PEGS REMOVED OPTION W/WO DRAIN HOLE MINI-FIT |
| ▽=0 | 3 PLACES ± | --- | --- | DATE | | | |
| ▽=0 | 2 PLACES ± | 0.38 | ±.020 | 1995/07/19 | | | |
| ▽=0 | 1 PLACE ± | 0.50 | ± | DATE | | | |
| ▽=0 | 0 PLACE ± | --- | --- | DATE | 2010/03/08 | | |
| ANGULAR ±1/2° | | MATERIAL NO. | | DOCUMENT NO. | | SHEET NO. | |
| DRAFT WHERE APPLICABLE MUST REMAIN WITHIN DIMENSIONS | | SEE SHEET 3 | | SDA-43588-**** | | 1 OF 4 | |
| THIS DRAWING CONTAINS INFORMATION THAT IS PROPRIETARY TO MOLEX INCORPORATED AND SHOULD NOT BE USED WITHOUT WRITTEN PERMISSION | | | | | | | |

SEE SHEET 2 FOR SINGLE ROW PRODUCT

| CKT SIZE | DIM A | DIM B |
|----------|------------------|------------------|
| 4 | .709 (18.00) | .496 (12.60) |
| 5 | .874 (22.20) | .661 (16.80) |
| 6 | 1.039 (26.40) | .827 (21.00) |
| 7 | 1.205 (30.60) | .992 (25.20) |
| 8 | 1.370 (34.80) | 1.157 (29.40) |
| 9 | 1.535 (39.00) | 1.323 (33.60) |
| 10 | 1.701 (43.20) | 1.488 (37.80) |
| 11 | 1.866 (47.40) | 1.654 (42.00) |
| 12 | 2.031 (51.60) | 1.819 (46.20) |



RECOMMENDED HOLE LAYOUT FOR
.070/(1.78) MAX. THICK P. C. BOARD
VIEWED FROM COMPONENT SIDE
(SEE NOTE 8)



SEE SHEET 1 FOR DUAL ROW PRODUCT

| REV | DESCRIPTION | QUALITY SYMBOLS | GENERAL TOLERANCES (UNLESS SPECIFIED) | | DIMENSION STYLE | | SCALE | DESIGN UNITS | THIRD ANGLE PROJECTION |
|---|----------------------|-----------------|--|--------|-----------------|------------|----------------|--------------|------------------------|
| | | | mm | INCH | IN/MM | DATE | | | |
| 1 | SEE SHEET 1 | 0 | 4 PLACES | ± .015 | IN/MM | DATE | 2:1 | METRIC | THIRD ANGLE PROJECTION |
| 2 | REC NO: UCP2015-4882 | 0 | 3 PLACES | ± .015 | IN/MM | 1995/07/19 | | | |
| 3 | DRAWN BY: DRW:NGUYEN | 0 | 2 PLACES | ± 0.38 | IN/MM | 1995/07/19 | | | |
| 4 | CHK'D: BELL | 0 | 1 PLACE | ± 0.50 | IN/MM | 2010/03/08 | | | |
| 5 | APPR: SMITH | 0 | 0 PLACE | ± | IN/MM | | | | |
| | | | ANGULAR ±1/2° | | MATERIAL NO. | | DOCUMENT NO. | | SHEET NO. |
| | | | DRAFT WHERE APPLICABLE MUST REMAIN WITHIN DIMENSIONS | | SEE SHEET 3 | | SDA-43588-**** | | 2 OF 4 |
| THIS DRAWING CONTAINS INFORMATION THAT IS PROPRIETARY TO MOLEX INCORPORATED AND SHOULD NOT BE USED WITHOUT WRITTEN PERMISSION | | | | | | | | | |



| ITEM NO. | CKTS | MATERIAL | HOUSING TYPE | DRAIN HOLES | PEG 1 | PEG 2 | PLATING PER NOTE 2 | TERMINAL VERSION REQUIRED AT EACH CIRCUIT LOCATION: V = VOID | | | | | | | | | | | | | | | | | | | | | | | | PACKAGING | | | |
|------------|------|----------|--------------|-------------|---------|---------|--------------------|--|---|---|---|---|---|---|---|---|----|----|----|----|----|----|----|----|----|----|----|----|----|----|----|-----------|--------------|--------------|-------------|
| | | | | | | | | 1 | 2 | 3 | 4 | 5 | 6 | 7 | 8 | 9 | 10 | 11 | 12 | 13 | 14 | 15 | 16 | 17 | 18 | 19 | 20 | 21 | 22 | 23 | 24 | | | | |
| 43588-2001 | 20 | 94V-2 | DUAL ROW | YES | WITH | REMOVED | A | 1 | 1 | 1 | 1 | 1 | 1 | 1 | 1 | 1 | 1 | 1 | 1 | 1 | 1 | 1 | 1 | 1 | 1 | 1 | 1 | 1 | 1 | - | - | - | - | PK-44206-001 | |
| 43588-2007 | 20 | 94V-2 | DUAL ROW | NO | REMOVED | WITH | A | 1 | 1 | 1 | 1 | 1 | 1 | 1 | 1 | 1 | 1 | 1 | 1 | 1 | 1 | 1 | 1 | 1 | 1 | 1 | 1 | 1 | 1 | 1 | - | - | - | - | PK-5566-003 |
| 43588-0010 | 04 | 94V-2 | DUAL ROW | YES | WITH | REMOVED | A | 1 | 1 | 1 | 1 | - | - | - | - | - | - | - | - | - | - | - | - | - | - | - | - | - | - | - | - | - | - | PK-44206-001 | |
| 43588-0012 | 05 | 94V-0 | SINGLE ROW | NO | WITH | WITH | C | 4 | V | V | V | 4 | - | - | - | - | - | - | - | - | - | - | - | - | - | - | - | - | - | - | - | - | PK-5566-002 | | |
| 43588-0015 | 05 | 94V-0 | SINGLE ROW | NO | WITH | WITH | A | 1 | V | 1 | V | 1 | - | - | - | - | - | - | - | - | - | - | - | - | - | - | - | - | - | - | - | - | BULK | | |
| 43588-0017 | 04 | 94V-0 | SINGLE ROW | NO | REMOVED | WITH | C | 4 | V | V | 4 | - | - | - | - | - | - | - | - | - | - | - | - | - | - | - | - | - | - | - | - | - | | | |
| 43588-0018 | 04 | 94V-0 | SINGLE ROW | NO | WITH | WITH | C | 4 | 5 | 5 | 4 | - | - | - | - | - | - | - | - | - | - | - | - | - | - | - | - | - | - | - | - | - | PK-5566-003 | | |
| 43588-0020 | 06 | 94V-2 | DUAL ROW | NO | NONE | NONE | C | 4 | V | 4 | 4 | V | 4 | - | - | - | - | - | - | - | - | - | - | - | - | - | - | - | - | - | - | - | | | |
| 43588-0021 | 14 | 94V-0 | DUAL ROW | NO | NONE | NONE | B | 3 | 3 | 3 | 3 | 3 | 3 | 3 | 3 | 3 | 3 | 3 | 3 | 3 | 3 | V | 3 | 3 | - | - | - | - | - | - | - | - | - | PK-5566-001 | |
| 43588-0022 | 24 | 94V-0 | DUAL ROW | NO | WITH | REMOVED | D | 6 | 6 | 6 | 6 | 6 | 6 | 6 | 6 | 6 | 6 | 6 | 6 | 6 | 6 | 6 | 6 | 6 | 6 | 6 | 6 | 6 | 6 | 6 | 6 | 6 | 6 | | |
| 43588-0023 | 05 | 94V-0 | SINGLE ROW | NO | REMOVED | REMOVED | D | 6 | 6 | 6 | 6 | 6 | - | - | - | - | - | - | - | - | - | - | - | - | - | - | - | - | - | - | - | - | PK-43588-001 | | |

| TERMINAL CODES | | |
|----------------|--------------------|----------|
| TERMINAL TYPE | PLATING SEE NOTE 2 | MATERIAL |
| 1 = STANDARD | A | BRASS |
| 3 = STANDARD | B | BRASS |
| 4 = STANDARD | C | BRASS |
| 5 = MF/BL | C | BRASS |
| 6 = STANDARD | D | BRASS |
| 7 = MF/BL | D | BRASS |

| | | | | | | | |
|--|---------------------|--|--|---|--|--|---|
| SEE SHEET 1 SEC NO: UCF2015-4882 2015/05/28 DRAWING/GEN CHKO: BELL 2015/05/22 APPROV: SMITH 2015/06/04 DESCRIPTION D18 REV | QUALITY SYMBOLS | GENERAL TOLERANCES (UNLESS SPECIFIED) mm INCH 4 PLACES ± --- ± --- 3 PLACES ± --- ± .015 2 PLACES ± 0.38 ± .020 1 PLACE ± 0.50 ± --- 0 PLACE ± ± | DIMENSION STYLE IN/MM DRAWN BY DATE AFG 1995/07/19 CHECKED BY DATE RJF 1995/07/19 APPROVED BY DATE F SMITH 2010/03/08 | SCALE DESIGN UNITS METRIC THIRD ANGLE PROJECTION | TITLE 2-24 CKT VERT HDR ASSY W/PEGS REMOVED OPTION W/WO DRAIN HOLE MINI-FIT molex | MATERIAL NO. DOCUMENT NO. SHEET NO. SEE CHART SDA-43588-**** 3 OF 4 | |
| | | | | | | | ANGULAR ±1/2° |
| | | | | | | | DRAFT WHERE APPLICABLE MUST REMAIN WITHIN DIMENSIONS |
| | | | | | | | THIS DRAWING CONTAINS INFORMATION THAT IS PROPRIETARY TO MOLEX INCORPORATED AND SHOULD NOT BE USED WITHOUT WRITTEN PERMISSION |

