

## Excellent Integrated System Limited

Stocking Distributor

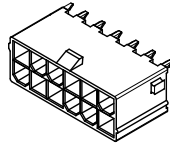
Click to view price, real time Inventory, Delivery & Lifecycle Information:

[Molex Connector Corporation](#)  
[0435880016](#)

For any questions, you can email us directly:

[sales@integrated-circuit.com](mailto:sales@integrated-circuit.com)

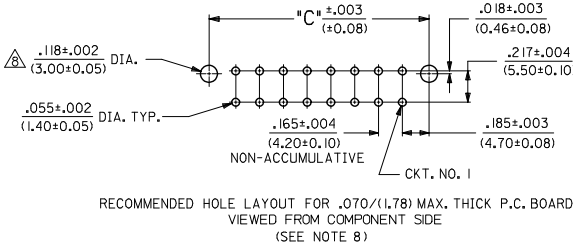
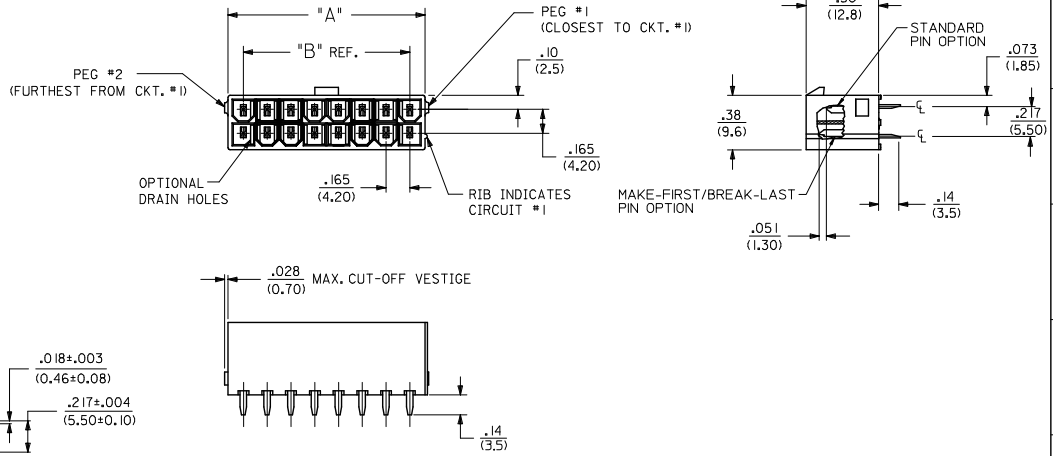
CIRCUIT SIZE	DIM. "A"	DIM. "B"	DIM. "C"
2	.21 (5.4)	—	.370 (9.40)
4	.38 (9.6)	.17 (4.2)	.535 (13.60)
6	.54 (13.8)	.33 (8.4)	.701 (17.80)
8	.71 (18.0)	.50 (12.6)	.866 (22.00)
10	.87 (22.2)	.66 (16.8)	1.031 (26.20)
12	1.04 (26.4)	.83 (21.0)	1.197 (30.40)
14	1.20 (30.6)	.99 (25.2)	1.362 (34.60)
16	1.37 (34.8)	1.16 (29.4)	1.528 (38.80)
18	1.54 (39.0)	1.32 (33.6)	1.693 (43.00)
20	1.70 (43.2)	1.49 (37.8)	1.858 (47.20)
22	1.87 (47.4)	1.65 (42.0)	2.024 (51.40)
24	2.03 (51.6)	1.82 (46.2)	2.189 (55.60)



12 CKT SHOWN

NOTES:

- MATERIALS:  
HOUSING MATERIAL AND OPTIONS: SEE CHART  
TERMINALS: BRASS
- TERMINAL PLATING:  
A = .000035/(0.00089) MIN. BRIGHT TIN OVER  
.000020/(0.00051) MIN. COPPER OVERALL  
B = .000030/(0.00076) MIN. SELECT GOLD AND  
.000100/(0.00254) MIN. MATTE TIN OVER  
.000050/(0.00127) MIN. NICKEL OVERALL  
C = .000100/(0.00254) MIN. BRIGHT TIN OVER  
.000050/(0.00127) MIN. NICKEL OVERALL  
D = .000100/(0.00254) MIN. MATTE TIN OVER  
.000050/(0.00127) MIN. NICKEL OVERALL
- PRODUCT SPECIFICATION: PS-5556-001
- PACKAGING: SEE CHART.
- PART MATES WITH MINI-FIT JR. RECEPTACLE #5557.
- PARTS ARE NOT DESIGNED FOR CURRENT SHARING.
- CONNECTOR ASSEMBLIES ARE NOT DESIGNED TO BE MATED OR UNMATED WHILE CIRCUITS ARE LIVE.
- LOCATION OF .118±.002/(3.00±0.05) DIAMETER HOLES ON P.C. BOARD IS FOR OPTIONAL PEGS.
- PART CONFORMS TO CLASS 'B' REQUIREMENTS OF COSMETIC SPECIFICATION PS-45499-002 EXCEPT IN AREA OF PEG CUT-OFF.
- 4 CIRCUIT PARTS WILL HAVE PEG DESIGN A. ALL OTHER CIRCUIT SIZES WILL HAVE PEG DESIGN B.

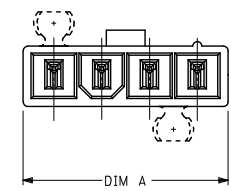
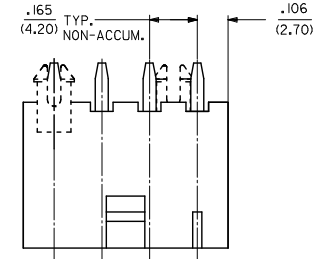
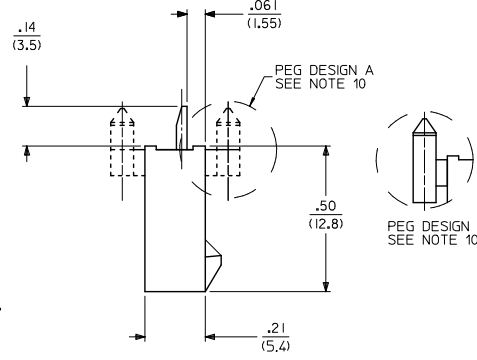
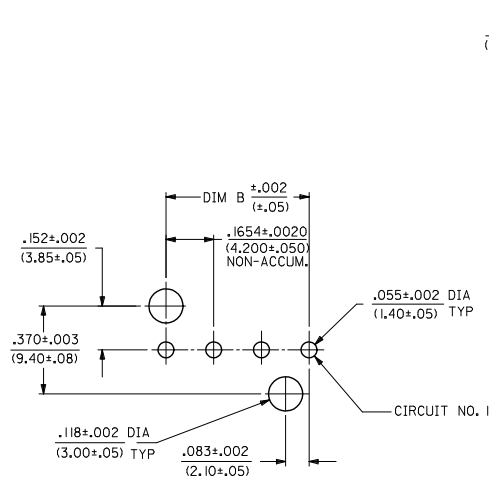
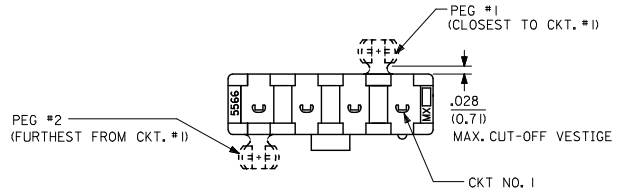
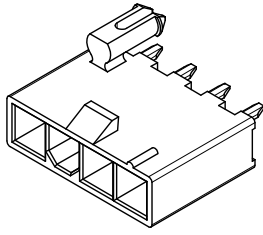


RECOMMENDED HOLE LAYOUT FOR .070/(1.78) MAX. THICK P.C. BOARD VIEWED FROM COMPONENT SIDE (SEE NOTE 8)

ADD: 43588-0029 PEC NO: UCP2015-468Z DRAWN BY: ZHANGYUEN CHKD: BELL APPROV: SMITH	QUALITY SYMBOLS ▽=0 ▽=0 ▽=0	GENERAL TOLERANCES (UNLESS SPECIFIED)	DIMENSION STYLE		SCALE: 2:1	DESIGN UNITS: METRIC	THIRD ANGLE PROJECTION
			mm	INCH			
DESCRIPTION: D18	DRAWN BY: ZHANGYUEN DATE: 2015/05/28	CHECKED BY: BELL DATE: 2015/05/28	DRAWN BY: AFG DATE: 1995/07/19		TITLE: 2-24 CKT VERT HDR ASSY W/PEGS REMOVED OPTION W/WO DRAIN HOLE MINI-FIT		
			CHECKED BY: RJF DATE: 1995/07/19				
REV: D18	APPROVED BY: SMITH DATE: 2010/03/08	ANGULAR ±1/2°		MATERIAL NO.	DOCUMENT NO.	SHEET NO.	
		DRAFT WHERE APPLICABLE MUST REMAIN WITHIN DIMENSIONS		SEE SHEET 3	SDA-43588-****	1 OF 4	

SEE SHEET 2 FOR SINGLE ROW PRODUCT

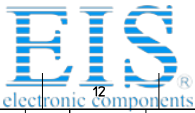
CKT SIZE	DIM A	DIM B
4	.709 (18.00)	.496 (12.60)
5	.874 (22.20)	.661 (16.80)
6	1.039 (26.40)	.827 (21.00)
7	1.205 (30.60)	.992 (25.20)
8	1.370 (34.80)	1.157 (29.40)
9	1.535 (39.00)	1.323 (33.60)
10	1.701 (43.20)	1.488 (37.80)
11	1.866 (47.40)	1.654 (42.00)
12	2.031 (51.60)	1.819 (46.20)



RECOMMENDED HOLE LAYOUT FOR .070/(1.78) MAX. THICK P. C. BOARD VIEWED FROM COMPONENT SIDE (SEE NOTE 8)

SEE SHEET I FOR DUAL ROW PRODUCT

SEE SHEET 1 DEC NO: UCP2015-4882 DRAWN BY: DRYNKHUEN CHK'D BY: BELL APPROVED BY: SMITH DATE: 2015/05/20 DATE: 2015/05/22 DATE: 2015/06/04	QUALITY SYMBOLS ∇=0 ∇=0 ∇=0	GENERAL TOLERANCES (UNLESS SPECIFIED)		DIMENSION STYLE IN/MM		SCALE 2:1	DESIGN UNITS METRIC	THIRD ANGLE PROJECTION	
		4 PLACES ± --- ± ---	3 PLACES ± --- ± .015	DRAWN BY AFG	DATE 1995/07/19	TITLE 2-24 CKT VERT HDR ASSY W/PEGS REMOVED OPTION W/WO DRAIN HOLE MINI-FIT  <b>molex</b> MATERIAL NO. SEE SHEET 3 DOCUMENT NO. SDA-43588-**** SHEET NO. 2 OF 4			
		2 PLACES ± 0.38 ± .020	1 PLACE ± 0.50 ± ---	CHECKED BY RJF	DATE 1995/07/19				
		0 PLACE ± ±	ANGULAR ±1/2°	APPROVED BY FSMITH	DATE 2010/03/08				
DRAFT WHERE APPLICABLE MUST REMAIN WITHIN DIMENSIONS		SIZE C		THIS DRAWING CONTAINS INFORMATION THAT IS PROPRIETARY TO MOLEX INCORPORATED AND SHOULD NOT BE USED WITHOUT WRITTEN PERMISSION					



Distributor of Molex Connector Corporation: Excellent Integrated System Limited

Datasheet of 0435880016 - MINI FIT JR 2-24CKT VERT HDR

Contact us: sales@integrated-circuit.com Website: www.integrated-circuit.com

Main table with columns: ITEM NO., CKTS, MATERIAL, HOUSING TYPE, DRAIN HOLES, PEG 1, PEG 2, PLATING PER NOTE 2, and 24 columns for TERMINAL VERSION REQUIRED AT EACH CIRCUIT LOCATION (1-24). Includes rows for items 43588-2001, 43588-2007, 43588-0010, 43588-0012, 43588-0015, 43588-0017, 43588-0018, 43588-0020, 43588-0021, 43588-0022, and 43588-0023.

TERMINAL CODES

Table with 3 columns: TERMINAL TYPE, PLATING SEE NOTE 2, MATERIAL. Rows include 1 = STANDARD (A, BRASS), 3 = STANDARD (B, BRASS), 4 = STANDARD (C, BRASS), 5 = MF/BL (C, BRASS), 6 = STANDARD (D, BRASS), 7 = MF/BL (D, BRASS).

Technical specification block containing: QUALITY SYMBOLS (with symbols for 4, 3, 2, 1, 0 places), GENERAL TOLERANCES (mm, INCH), DIMENSION STYLE (IN/MM), SCALE, DESIGN UNITS (METRIC), THIRD ANGLE PROJECTION, TITLE (2-24 CKT VERT HDR ASSY W/PEGS REMOVED OPTION W/WO DRAIN HOLE MINI-FIT), molex logo, MATERIAL NO., DOCUMENT NO. (SDA-43588-\*\*\*\*), SHEET NO. (3 OF 4), and a disclaimer: THIS DRAWING CONTAINS INFORMATION THAT IS PROPRIETARY TO MOLEX INCORPORATED AND SHOULD NOT BE USED WITHOUT WRITTEN PERMISSION.

Id\_frame\_C\_P\_AM\_T Rev. G 2012/01/11

12 11 10 9 8 7 6 5 4 3 2 1

