

Excellent Integrated System Limited

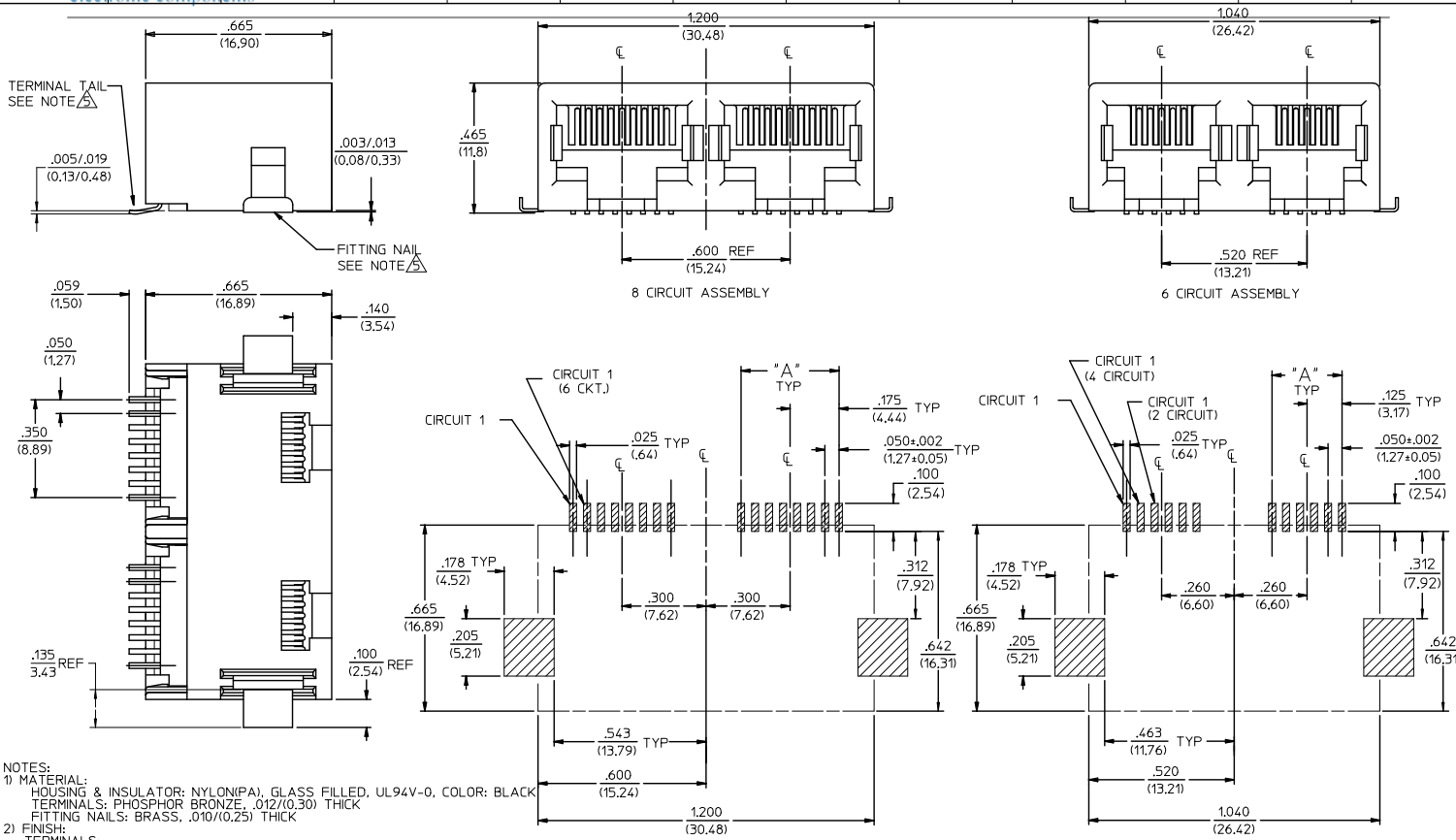
Stocking Distributor

Click to view price, real time Inventory, Delivery & Lifecycle Information:

[Molex Connector Corporation](#)
[0438410007](#)

For any questions, you can email us directly:

sales@integrated-circuit.com



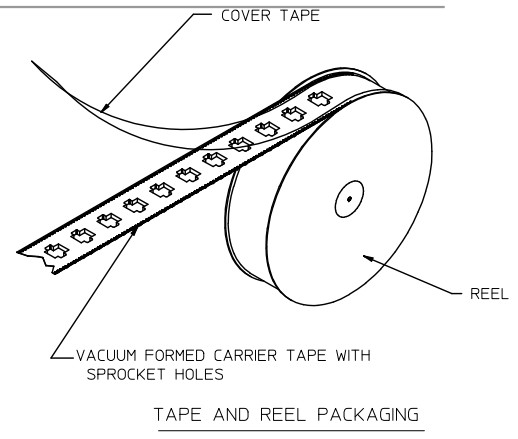
- NOTES:
- MATERIAL: HOUSING & INSULATOR: NYLON(PA), GLASS FILLED, UL94V-0, COLOR: BLACK
TERMINALS: PHOSPHOR BRONZE, .012/(0.30) THICK
FITTING NAILS: BRASS, .010/(0.25) THICK
 - FINISH: TERMINALS:
A - SELECT GOLD IN CONTACT AREA: .000050/(0.00127) MIN.
SELECT MATTE TIN IN PC TAIL AREA: .000100/(0.00254) MIN.
WITH OVERALL NICKEL UNDERPLATE: .000050/(0.00127) MIN.
B - SELECT GOLD IN CONTACT AREA: .000030/(0.00076) MIN.
SELECT MATTE TIN IN PC TAIL AREA: .000100/(0.00254) MIN.
WITH OVERALL NICKEL UNDERPLATE: .000050/(0.00127) MIN.
C - SELECT GOLD IN CONTACT AREA: .000015/(0.00038) MIN.
SELECT MATTE TIN IN PC TAIL AREA: .000100/(0.00254) MIN.
WITH OVERALL NICKEL UNDERPLATE: .000050/(0.00127) MIN.
 - FITTING NAIL: 100 MICRONS MATTE TIN OVER 50 MICRONS NICKEL UNDERPLATE
 - PRODUCT SPECIFICATION AND PROCESSING PARAMETERS: PS-43743-0001
 - PACKAGING SPECIFICATION: CONNECTOR ASSEMBLIES TO BE PACKAGED USING TAPE & REEL SYSTEM.
 - COPLANARITY SPECIFICATION: WHEN AN ASSEMBLY IS PLACED UPON A LEVEL SURFACE, THE MAXIMUM GAP BETWEEN THE LEVEL SURFACE AND ALL TERMINAL TAILS AND BOTH FITTING NAILS IS .006/(0.15).
 - FOR ASSEMBLIES HAVING VOIDED CIRCUITS, THE TAIL PORTION IS CUT AND REMOVED. THE MATING PORTION OF THE TERMINAL REMAINS INTACT. VOIDED CIRCUITS MUST BE THE SAME FOR BOTH PARTS.
 - CONFORMS TO FCC REGULATION PART 68.5 FOR MODULAR JACKS.

PC BOARD LAYOUT FOR 8 POSITION HOUSING (COMPONENT SIDE OF BOARD)

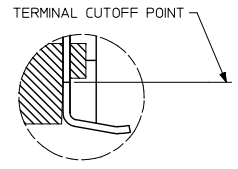
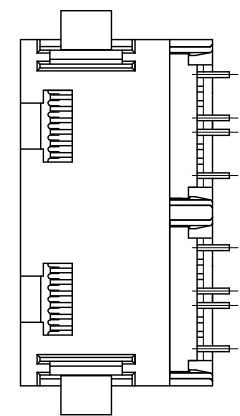
PC BOARD LAYOUT FOR 6 POSITION HOUSING (COMPONENT SIDE OF BOARD)

CORRECT NOTE # DEC NO: UCP2015-4879 DRAWN BY: ZHANGJUN CHKD: BELL APPR: SMITH DATE: 2015/05/31 DATE: 2015/06/07	QUALITY SYMBOLS ∇=0 ∇=0 ∇=0	GENERAL TOLERANCES (UNLESS SPECIFIED)		DIMENSION STYLE IN/MM		SCALE 2:1	DESIGN UNITS INCH	THIRD ANGLE PROJECTION			
		4 PLACES ± .010 ± .010	3 PLACES ± .010 ± .010	DRAWN BY PEARSON	DATE 01/07/197	TITLE 4, 6 & 8 CIRCUIT DUAL PORT SMT MODJACK					
		2 PLACES ± 0.25 ± .015	1 PLACE ± .38 ± .015	CHECKED BY MUELLER	DATE 01/07/197	MATERIAL NO. DOCUMENT NO. SHEET NO. SD-43841-001 1 OF 2					
		0 PLACE ± .010 ± .010	ANGULAR ± 1/2°	APPROVED BY SMITH	DATE 2012/10/12	DRAFT WHERE APPLICABLE MUST REMAIN WITHIN DIMENSIONS SEE CHART THIS DRAWING CONTAINS INFORMATION THAT IS PROPRIETARY TO MOLEX INCORPORATED AND SHOULD NOT BE USED WITHOUT WRITTEN PERMISSION					

ASSEMBLY ITEM NO.	CONNECTOR SIZE	CIRCUIT SIZE	TERMINAL PLATING	TAPE & REEL PACKAGING NO.	VOIDED CIRCUITS
43841-0001	8	4	A	PK-70873-7004	NA
43841-0002	8	6	A	PK-70873-7004	
43841-0003	8	8	A	PK-70873-7004	
43841-0004	6	4	A	PK-70873-7003	
43841-0005	6	6	A	PK-70873-7003	
43841-0006	8	4	B	PK-70873-7004	
43841-0007	8	6	B	PK-70873-7004	
43841-0008	8	8	B	PK-70873-7004	
43841-0009	6	4	B	PK-70873-7003	
43841-0010	6	6	B	PK-70873-7003	
43841-0011	8	4	C	PK-70873-7004	
43841-0012	8	6	C	PK-70873-7004	
43841-0013	8	8	C	PK-70873-7004	
43841-0014	6	4	C	PK-70873-7003	
43841-0015	6	6	C	PK-70873-7003	
43841-0016	6	2	A	PK-70873-7003	
43841-0017	6	2	B	PK-70873-7003	
43841-0018	6	2	C	PK-70873-7003	NA



HOUSING SIZE	CIRCUIT SIZE	DIM. A
6	6	.250 (6.35)
6	4	.150 (3.81)
6	2	.050 (1.27)
8	8	.350 (8.89)
8	6	.250 (6.35)
8	4	.150 (3.81)



SEE SHEET ONE DEC NO: UCP2013-4679 DRAWING NO: 2013/05/31 CHKD: BELL 2013/05/31 APPR: SMITH 2013/06/07 G4	QUALITY SYMBOLS ∇=0 ∇=0 ∇=0	GENERAL TOLERANCES (UNLESS SPECIFIED)		DIMENSION STYLE IN/MM		SCALE 2:1	DESIGN UNITS INCH	THIRD ANGLE PROJECTION	
		4 PLACES ± --- ± ---	mm	INCH	DRAWN BY	DATE	TITLE 4, 6 & 8 CIRCUIT DUAL PORT SMT MODJACK molex DOCUMENT NO. SD-43841-001 SHEET NO. 2 OF 2		
		3 PLACES ± --- ± .010			PEARSON	01/07/97			
		2 PLACES ± 0.25 ± .015			CHECKED BY	DATE			
1 PLACE ± .38 ± ---			MUELLER	01/07/97					
			0 PLACE ± --- ± ---			APPROVED BY	DATE		
						FSMITH	2012/10/12		
ANGULAR ±1/2° DRAFT WHERE APPLICABLE MUST REMAIN WITHIN DIMENSIONS			MATERIAL NO. SEE CHART		THIS DRAWING CONTAINS INFORMATION THAT IS PROPRIETARY TO MOLEX INCORPORATED AND SHOULD NOT BE USED WITHOUT WRITTEN PERMISSION				