

Excellent Integrated System Limited

Stocking Distributor

Click to view price, real time Inventory, Delivery & Lifecycle Information:

[Molex Connector Corporation](#)
[0439151201](#)

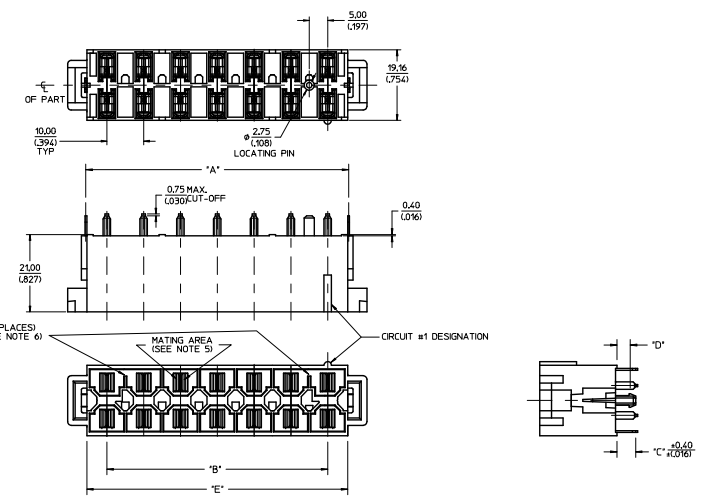
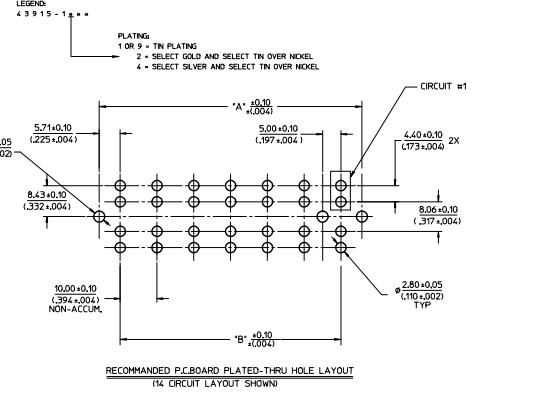
For any questions, you can email us directly:

sales@integrated-circuit.com

MATERIAL NUMBER	CIRCUITS	DM'A'	DM'B'	DM'C'	DM'D'	DM'E'	PCB THICKNESS	QUANTITY OF POLARIZING SLOTS	TERMINAL PLATING	STATUS
4395-1201	6	3141/2371	2000/1781	3501/1371	1801/079	3000/1217		1		
4395-1202	8	4141/1630	3000/1181	3501/1371	1801/079	4090/1650		2		
4395-1203	10	5141/2024	4000/1575	3501/1371	1801/079	5090/2004	157/0421	2		
4395-1204	12	6141/2418	5000/1969	3501/1371	1801/079	6090/2398		2		
4395-1205	14	7141/2811	6000/2362	3501/1371	1801/079	7090/2791		2		
4395-1206	6	3141/2371	2000/1781	3501/1371	2401/1021	3000/1217		1		
4395-1207	8	4141/1630	3000/1181	3501/1371	2401/1021	4090/1650		2		
4395-1208	10	5141/2024	4000/1575	3501/1371	2401/1021	5090/2004	236/0931	2		
4395-1209	12	6141/2418	5000/1969	3501/1371	2401/1021	6090/2398		2		
4395-1210	14	7141/2811	6000/2362	3501/1371	2401/1021	7090/2791		2	SELECT GOLD (SEE LEGEND)	ACTIVE
4395-1211	6	3141/2371	2000/1781	3501/1371	3401/1341	3000/1217		1		
4395-1212	8	4141/1630	3000/1181	3501/1371	3401/1341	4090/1650		2		
4395-1213	10	5141/2024	4000/1575	3501/1371	3401/1341	5090/2004	318/11251	2		
4395-1214	12	6141/2418	5000/1969	3501/1371	3401/1341	6090/2398		2		
4395-1215	14	7141/2811	6000/2362	3501/1371	3401/1341	7090/2791		2		
4395-1216	6	3141/2371	2000/1781	3501/1371	658/2591	3000/1217		1		
4395-1217	8	4141/1630	3000/1181	3501/1371	658/2591	4090/1650		2		
4395-1218	10	5141/2024	4000/1575	3501/1371	658/2591	5090/2004	635/12501	2		
4395-1219	12	6141/2418	5000/1969	3501/1371	658/2591	6090/2398		2		
4395-1220	14	7141/2811	6000/2362	3501/1371	658/2591	7090/2791		2		
4395-1221	10	5141/2024	4000/1575	3501/1371	2401/1021	5090/2004	236/0931	2		
4395-1401	6	3141/2371	2000/1781	3501/1371	1801/079	3000/1217		2		
4395-1402	8	4141/1630	3000/1181	3501/1371	1801/079	4090/1650	157/0421	2		
4395-1403	10	5141/2024	4000/1575	3501/1371	1801/079	5090/2004		2		
4395-1404	12	6141/2418	5000/1969	3501/1371	1801/079	6090/2398		2		
4395-1405	14	7141/2811	6000/2362	3501/1371	1801/079	7090/2791		2		
4395-1406	6	3141/2371	2000/1781	3501/1371	2401/1021	3000/1217		2		
4395-1407	8	4141/1630	3000/1181	3501/1371	2401/1021	4090/1650		2		
4395-1408	10	5141/2024	4000/1575	3501/1371	2401/1021	5090/2004	236/0931	2		
4395-1409	12	6141/2418	5000/1969	3501/1371	2401/1021	6090/2398		2		
4395-1410	14	7141/2811	6000/2362	3501/1371	2401/1021	7090/2791		2	SELECT SILVER (SEE LEGEND)	ACTIVE
4395-1411	6	3141/2371	2000/1781	3501/1371	3401/1341	3000/1217		2		
4395-1412	8	4141/1630	3000/1181	3501/1371	3401/1341	4090/1650		2		
4395-1413	10	5141/2024	4000/1575	3501/1371	3401/1341	5090/2004	318/11251	2		
4395-1414	12	6141/2418	5000/1969	3501/1371	3401/1341	6090/2398		2		
4395-1415	14	7141/2811	6000/2362	3501/1371	3401/1341	7090/2791		2		
4395-1416	6	3141/2371	2000/1781	3501/1371	658/2591	3000/1217		2		
4395-1417	8	4141/1630	3000/1181	3501/1371	658/2591	4090/1650		2		
4395-1418	10	5141/2024	4000/1575	3501/1371	658/2591	5090/2004	635/12501	2		
4395-1419	12	6141/2418	5000/1969	3501/1371	658/2591	6090/2398		2		
4395-1420	14	7141/2811	6000/2362	3501/1371	658/2591	7090/2791		2		
4395-1421	10	5141/2024	4000/1575	3501/1371	2401/1021	5090/2004	236/0931	2		

- NOTES:**
- MATERIALS:**
HOUSING: 30% GLASS FILLED NYLON 4/6, UL94V-0, COLOR: BLACK.

TERMINAL: ALLOY 151
PLATING: *TIN OVER NICKEL
OR SELECT GOLD AND SELECT TIN OVER NICKEL
OR SELECT SILVER AND SELECT TIN OVER NICKEL
(SEE CHART)
* THE PRIMARY SHIPPING CARTON WILL BE LABELED
COMPLIANT TO RHS DIRECTIVE 2002/95/EC
AND ELV ANNEX II OF DIRECTIVE 2000/53/EC.
CARTONS WITHOUT THIS LABEL MAY CONTAIN
PRODUCT WITH TIN-LEAD.
 - PRODUCT SPEC:** PS-42815-001
 - PARTS ARE NOT TO BE MATED OR UNMATED WHILE CIRCUITS ARE LIVE.
 - PART MATES WITH MOLEX RECEPTACLE 4394.
 - WHEN USING OVERALL TIN PLATED TERMINALS:
FOR APPLICATIONS INVOLVING VIBRATION AND/OR THERMAL CYCLING, MOLEX STRONGLY
RECOMMENDS THE USE OF NYE LUBRICANT INVOGEL 76001 ON THE MATING
SURFACES OF THE TERMINAL.
 - POLARIZING SLOTS TO BE LOCATED BETWEEN CIRCUITS ON EITHER END
OF HOUSING OF THE CIRCUIT 1 ROW, AS SHOWN.
EXCEPTION: THE 6 CIRCUIT HOUSING WILL HAVE A SINGLE SLOT ON THE CIRCUIT 1 END ONLY.
 - PARTS CONFORMS TO CLASS 'B' REQUIREMENTS OF COSMETIC SPEC-PS-45499-002.
 - REFER AS-42815-001 FOR TIN PLATED TERMINALS RECOMMENDED LUBRICATION PROCEDURE.



NEW SILVER PLATING REPAIR (MFR) 2752 (DOWN) BRO2 CHECKS APPROVED 2015/02/09 MEX	QUALITY SYMBOLS 4 PLACES ±0.008 3 PLACES ±0.008 2 PLACES ±0.2 1 PLACE ±0.2 0 PLACE ±0.2	GENERAL TOLERANCES (UNLESS SPECIFIED) mm INCH ±0.15 ±0.006 ±0.25 ±0.010 ±0.50 ±0.020 ±1.00 ±0.040 ±1.50 ±0.060 ±2.00 ±0.080 ±3.00 ±0.120 ±4.00 ±0.160 ±5.00 ±0.200 ±6.00 ±0.240 ±8.00 ±0.320 ±10.00 ±0.400 ±15.00 ±0.600 ±20.00 ±0.800 ±30.00 ±1.200 ±40.00 ±1.600 ±50.00 ±2.000 ±60.00 ±2.400 ±80.00 ±3.200 ±100.00 ±4.000	DIMENSION STYLE MM/IN DRAWN BY COMERC1 CHECKED BY BRO2 APPROVED BY KPRASAD DATE 8/21/19/1 DATE 2014/02/13 DATE 2015/02/09	SCALE 2:1 DESIGN UNITS METRIC THIRD ANGLE PROJECTION	TITLE VERTICAL HEADER DUAL ROW, 6-14 CIRCUIT MINI-FIT SR.	MATERIAL NO. SEE CHART	DOCUMENT NO. SD-43915-002	SHEET NO. 1 OF 2
	DRAFT WHERE APPLICABLE MUST REMAIN WITHIN DIMENSIONS							
	SIZE D THIS DRAWING CONTAINS INFORMATION THAT IS PROPRIETARY TO MOLEX INCORPORATED AND SHOULD NOT BE USED WITHOUT WRITTEN PERMISSION							
	MOLEX							

20 19 18 17 16 15 14 13 12 11 10 9 8 7 6 5 4 3 2 1

MATERIAL NUMBER	CIRCUITS	DMC'A'	DMC'B'	DMC'C'	DMC'D'	DMC'E'	PCB THICKNESS	QUANTITY OF POLARIZING SLOTS	TERMINAL PLATING	STATUS
4395-1101	6	3141(1237)	30.00(1181)	3.50(137)	1.80(1078)	30.90(1217)		1		
4395-1102	8	4141(1630)	30.00(1181)	3.50(137)	1.80(1078)	40.90(1610)		2		
4395-1103	10	5141(2024)	40.00(1575)	3.50(137)	1.80(1078)	50.90(2004)	157(0.062)	2		
4395-1104	12	6141(2418)	50.00(1969)	3.50(137)	1.80(1078)	60.90(2398)		2		
4395-1105	14	7141(2811)	60.00(2362)	3.50(137)	1.80(1078)	70.90(2791)		2		
4395-1106	6	3141(1237)	30.00(1181)	5.00(201)	2.60(1102)	30.90(1217)		1		
4395-1107	8	4141(1630)	30.00(1181)	5.00(201)	2.60(1102)	40.90(1610)		2		
4395-1108	10	5141(2024)	40.00(1575)	5.00(201)	2.60(1102)	50.90(2004)	2.36(1.093)	2		
4395-1109	12	6141(2418)	50.00(1969)	5.00(201)	2.60(1102)	60.90(2398)		2		
4395-1110	14	7141(2811)	60.00(2362)	5.00(201)	2.60(1102)	70.90(2791)		2		
4395-1111	6	3141(1237)	30.00(1181)	5.00(201)	3.40(134)	30.90(1217)		1		
4395-1112	8	4141(1630)	30.00(1181)	5.00(201)	3.40(134)	40.90(1610)		2		
4395-1113	10	5141(2024)	40.00(1575)	5.00(201)	3.40(134)	50.90(2004)	3.18(1.25)	2		
4395-1114	12	6141(2418)	50.00(1969)	5.00(201)	3.40(134)	60.90(2398)		2		
4395-1115	14	7141(2811)	60.00(2362)	5.00(201)	3.40(134)	70.90(2791)		2		
4395-1116	6	3141(1237)	30.00(1181)	8.30(327)	6.58(1259)	30.90(1217)		1		
4395-1117	8	4141(1630)	30.00(1181)	8.30(327)	6.58(1259)	40.90(1610)		2		
4395-1118	10	5141(2024)	40.00(1575)	8.30(327)	6.58(1259)	50.90(2004)	6.35(1.250)	2		
4395-1119	12	6141(2418)	50.00(1969)	8.30(327)	6.58(1259)	60.90(2398)		2		
4395-1120	14	7141(2811)	60.00(2362)	8.30(327)	6.58(1259)	70.90(2791)		2		
4395-1121	10	5141(2024)	40.00(1575)	3.50(137)	2.60(1102)	50.90(2004)	2.36(1.093)	2		
4395-1122	14	7141(2811)	60.00(2362)	3.50(137)	1.80(1078)	70.90(2791)	157(0.062)	2		PLANNED FOR OBSOLETE

SEE SHEET 1 EC NO. IEP205-2752 DWN:BR02 2019/10/25 CHK: [initials] APP:KPRASAD 2015/02/09 REV:	QUALITY SYMBOLS	GENERAL TOLERANCES (UNLESS SPECIFIED)	DIMENSION STYLE	SCALE	DESIGN UNITS	THIRD ANGLE PROJECTION	
	∇=0 ∇=0 ∇=0	4 PLACES ±.008 3 PLACES ±.008 2 PLACES ±0.2 1 PLACE ±.008 0 PLACE ±.008	mm INCH COMERC I BRO2 KPRASAD	DATE 8/21/97 DATE 2014/02/13 DATE 2015/02/09	1:2	METRIC	VERTICAL HEADER DUAL ROW, 6-14 CIRCUIT MINI-FIT SR.
	ANGULAR ±1/2° DRAFT WHERE APPLICABLE MUST REMAIN WITHIN DIMENSIONS	MATERIAL NO. SEE CHART SIZE D	DOCUMENT NO. SD-43915-002	SHEET NO. 2 OF 2	THIS DRAWING CONTAINS INFORMATION THAT IS PROPRIETARY TO MOLEX INCORPORATED AND SHOULD NOT BE USED WITHOUT WRITTEN PERMISSION		

19 18 17 16 15 14 13 12 11 10 9 8 7 6 5 4 3 2 1