

Excellent Integrated System Limited

Stocking Distributor

Click to view price, real time Inventory, Delivery & Lifecycle Information:

[Molex Connector Corporation](#)
[0439151218](#)

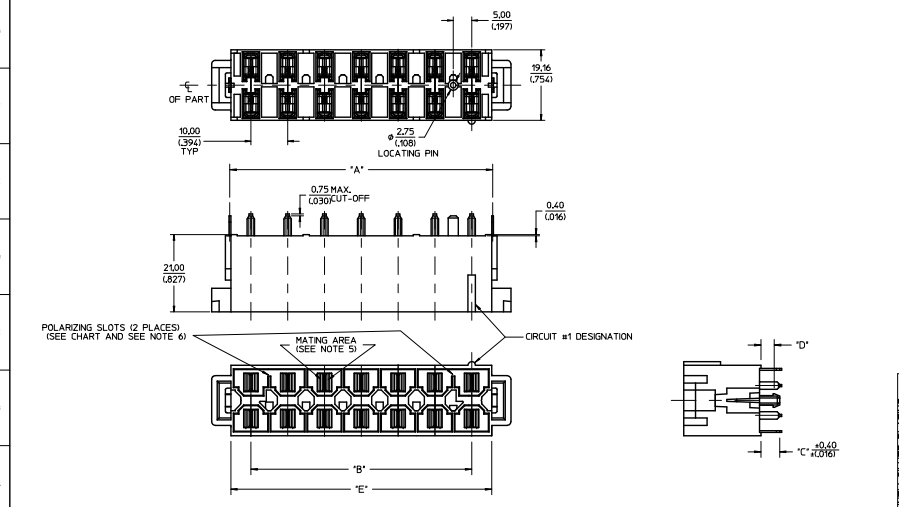
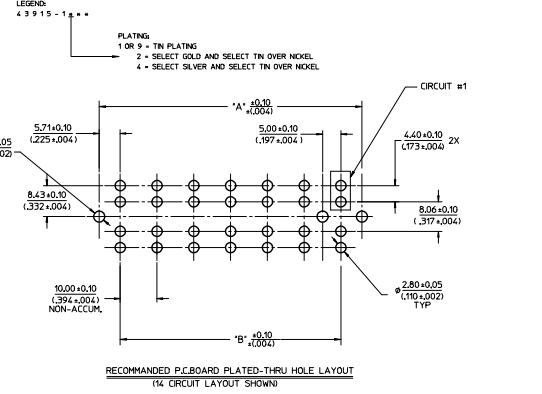
For any questions, you can email us directly:

sales@integrated-circuit.com

MATERIAL NUMBER	CIRCUITS	DM'A'	DM'B'	DM'C'	DM'D'	DM'E'	PCB THICKNESS	QUANTITY OF POLARIZING SLOTS	TERMINAL PLATING	STATUS
4395-0207	6	3141/1237	2000/1781	3501/1371	1801/079	3000/1217		1		
4395-0202	8	4141/1630	3000/1181	3501/1371	1801/079	4000/1600		2		
4395-0203	10	5141/2024	4000/1575	3501/1371	1801/079	5000/2004	157/1062	2		
4395-0204	12	6141/2418	5000/1969	3501/1371	1801/079	6000/2398		2		
4395-0205	14	7141/2811	6000/2362	3501/1371	1801/079	7000/2791		2		
4395-0206	6	3141/1237	2000/1781	3501/1371	2601/1021	3000/1217		1		
4395-0207	8	4141/1630	3000/1181	3501/1371	2601/1021	4000/1600		2		
4395-0208	10	5141/2024	4000/1575	3501/1371	2601/1021	5000/2004	236/1093	2		
4395-0209	12	6141/2418	5000/1969	3501/1371	2601/1021	6000/2398		2		
4395-0210	14	7141/2811	6000/2362	3501/1371	2601/1021	7000/2791		2	SELECT GOLD (SEE LEGEND)	ACTIVE
4395-0211	6	3141/1237	2000/1781	3501/1371	3401/1341	3000/1217		1		
4395-0212	8	4141/1630	3000/1181	3501/1371	3401/1341	4000/1600		2		
4395-0213	10	5141/2024	4000/1575	3501/1371	3401/1341	5000/2004	318/1125	2		
4395-0214	12	6141/2418	5000/1969	3501/1371	3401/1341	6000/2398		2		
4395-0215	14	7141/2811	6000/2362	3501/1371	3401/1341	7000/2791		2		
4395-0216	6	3141/1237	2000/1781	8301/3271	6581/2591	3000/1217		1		
4395-0217	8	4141/1630	3000/1181	8301/3271	6581/2591	4000/1600		2		
4395-0218	10	5141/2024	4000/1575	8301/3271	6581/2591	5000/2004	635/1250	2		
4395-0219	12	6141/2418	5000/1969	8301/3271	6581/2591	6000/2398		2		
4395-0220	14	7141/2811	6000/2362	8301/3271	6581/2591	7000/2791		2		
4395-0221	10	5141/2024	4000/1575	3501/1371	2601/1021	5000/2004	236/1093	2		
4395-0222	6	3141/1237	2000/1781	3501/1371	1801/079	3000/1217		1		
4395-0223	8	4141/1630	3000/1181	3501/1371	1801/079	4000/1600		2		
4395-0224	10	5141/2024	4000/1575	3501/1371	1801/079	5000/2004	157/1062	2		
4395-0225	12	6141/2418	5000/1969	3501/1371	1801/079	6000/2398		2		
4395-0226	14	7141/2811	6000/2362	3501/1371	1801/079	7000/2791		2		
4395-0227	6	3141/1237	2000/1781	3501/1371	2601/1021	3000/1217		1		
4395-0228	8	4141/1630	3000/1181	3501/1371	2601/1021	4000/1600		2		
4395-0229	10	5141/2024	4000/1575	3501/1371	2601/1021	5000/2004	236/1093	2		
4395-0230	12	6141/2418	5000/1969	3501/1371	2601/1021	6000/2398		2		
4395-0231	14	7141/2811	6000/2362	3501/1371	2601/1021	7000/2791		2	SELECT SILVER (SEE LEGEND)	ACTIVE
4395-0232	6	3141/1237	2000/1781	8301/3271	6581/2591	3000/1217		1		
4395-0233	8	4141/1630	3000/1181	8301/3271	6581/2591	4000/1600		2		
4395-0234	10	5141/2024	4000/1575	8301/3271	6581/2591	5000/2004	635/1250	2		
4395-0235	12	6141/2418	5000/1969	8301/3271	6581/2591	6000/2398		2		
4395-0236	14	7141/2811	6000/2362	8301/3271	6581/2591	7000/2791		2		
4395-0237	6	3141/1237	2000/1781	8301/3271	6581/2591	3000/1217		1		
4395-0238	8	4141/1630	3000/1181	8301/3271	6581/2591	4000/1600		2		
4395-0239	10	5141/2024	4000/1575	8301/3271	6581/2591	5000/2004	236/1093	2		
4395-0240	12	6141/2418	5000/1969	8301/3271	6581/2591	6000/2398		2		
4395-0241	14	7141/2811	6000/2362	8301/3271	6581/2591	7000/2791		2		
4395-0242	10	5141/2024	4000/1575	3501/1371	2601/1021	5000/2004	236/1093	2		

- NOTES:**
- MATERIALS:**
HOUSING: 30% GLASS FILLED NYLON 4/6, UL94V-0, COLOR: BLACK.

TERMINAL: ALLOY '51'
PLATING: *TIN OVER NICKEL
OR SELECT GOLD AND SELECT TIN OVER NICKEL
OR SELECT SILVER AND SELECT TIN OVER NICKEL
(SEE CHART)
* THE PRIMARY SHIPPING CARTON WILL BE LABELED
COMPLIANT TO RHS DIRECTIVE 2002/95/EC
AND ELV ANNEX II OF DIRECTIVE 2000/53/EC.
CARTONS WITHOUT THIS LABEL MAY CONTAIN
PRODUCT WITH TIN-LEAD.
 - PRODUCT SPEC:** PS-42815-001
 - PARTS ARE NOT TO BE MATED OR UNMATED WHILE CIRCUITS ARE LIVE.
 - PART MATES WITH MOLEX RECEPTACLE 4394.
 - WHEN USING OVERALL TIN PLATED TERMINALS:
FOR APPLICATIONS INVOLVING VIBRATION AND/OR THERMAL CYCLING, MOLEX STRONGLY
RECOMMENDS THE USE OF NYE LUBRICANT INVOGEL 76001 ON THE MATING
SURFACES OF THE TERMINAL.
 - POLARIZING SLOTS TO BE LOCATED BETWEEN CIRCUITS ON EITHER END
OF HOUSING OF THE CIRCUIT 1 ROW, AS SHOWN.
EXCEPTION: THE 6 CIRCUIT HOUSING WILL HAVE A SINGLE SLOT ON THE CIRCUIT 1 END ONLY.
 - PARTS CONFORMS TO CLASS 'B' REQUIREMENTS OF COSMETIC SPEC-PS-45499-002.
 - REFER AS-42815-001 FOR TIN PLATED TERMINALS RECOMMENDED LUBRICATION PROCEDURE.



NEW SILVER PLATING REPAIR (MATERIAL) 2752 (DOWN) BRO2 CHECKS APPROVED 2015/02/09 DATE	QUALITY SYMBOLS 4 PLACES ± 0.008 3 PLACES ± 0.008 2 PLACES ± 0.2 1 PLACE ± 0.2 0 PLACE ± 0.2	GENERAL TOLERANCES (UNLESS SPECIFIED) mm INCH ± 0.15 ± 0.006 ± 0.25 ± 0.010 ± 0.50 ± 0.020 ± 0.75 ± 0.030 ± 1.50 ± 0.060 ± 3.00 ± 0.120 ± 6.00 ± 0.240 ± 12.00 ± 0.480 ± 25.00 ± 1.000 ± 50.00 ± 2.000 ± 100.00 ± 4.000 ± 200.00 ± 8.000 ± 500.00 ± 20.000 ± 1000.00 ± 40.000	DIMENSION STYLE MM/IN DRAWN BY: COMERC1 CHECKED BY: BRO2 APPROVED BY: KPRASAD DATE: 8/21/19 DATE: 2014/02/13 DATE: 2015/02/09	SCALE 2:1 DESIGN UNITS METRIC THIRD ANGLE PROJECTION	TITLE VERTICAL HEADER DUAL ROW, 6-14 CIRCUIT MINI-FIT SR. molex MATERIAL NO: SEE CHART DOCUMENT NO: SD-43915-002 SHEET NO: 1 OF 2
	DRAFT WHERE APPLICABLE MUST REMAIN WITHIN DIMENSIONS				
	SIZE D THIS DRAWING CONTAINS INFORMATION THAT IS PROPRIETARY TO MOLEX INCORPORATED AND SHOULD NOT BE USED WITHOUT WRITTEN PERMISSION				
	REVISIONS				

20 19 18 17 16 15 14 13 12 11 10 9 8 7 6 5 4 3 2 1

MATERIAL NUMBER	CIRCUITS	DMX ^A	DMX ^B	DMX ^C	DMX ^D	DMX ^E	PCB THICKNESS	QUANTITY OF POLARIZING SLOTS	TERMINAL PLATING	STATUS
4395-1101	6	3141(1237)	30,00(1191)	3,50(137)	1,80(107)	20,90(121)		1		
4395-1102	8	4141(1630)	30,00(1191)	3,50(137)	1,80(107)	40,90(1610)		2		
4395-1103	10	5141(2024)	40,00(1575)	3,50(137)	1,80(107)	50,90(2004)	157(1062)	2		
4395-1104	12	6141(2418)	50,00(1969)	3,50(137)	1,80(107)	60,90(2398)		2		
4395-1105	14	7141(2811)	60,00(2362)	3,50(137)	1,80(107)	70,90(2791)		2		
4395-1106	6	3141(1237)	30,00(1191)	3,50(137)	1,80(107)	20,90(121)		1		
4395-1107	8	4141(1630)	30,00(1191)	3,50(137)	1,80(107)	40,90(1610)		2		
4395-1108	10	5141(2024)	40,00(1575)	3,50(137)	1,80(107)	50,90(2004)	2.36(1093)	2		
4395-1109	12	6141(2418)	50,00(1969)	3,50(137)	1,80(107)	60,90(2398)		2		
4395-1110	14	7141(2811)	60,00(2362)	3,50(137)	1,80(107)	70,90(2791)		2		
4395-1111	6	3141(1237)	30,00(1191)	3,50(137)	1,80(107)	20,90(121)		1		
4395-1112	8	4141(1630)	30,00(1191)	3,50(137)	1,80(107)	40,90(1610)		2		
4395-1113	10	5141(2024)	40,00(1575)	3,50(137)	1,80(107)	50,90(2004)	3.18(1125)	2		
4395-1114	12	6141(2418)	50,00(1969)	3,50(137)	1,80(107)	60,90(2398)		2		
4395-1115	14	7141(2811)	60,00(2362)	3,50(137)	1,80(107)	70,90(2791)		2		
4395-1116	6	3141(1237)	30,00(1191)	3,50(137)	1,80(107)	20,90(121)		1		
4395-1117	8	4141(1630)	30,00(1191)	3,50(137)	1,80(107)	40,90(1610)		2		
4395-1118	10	5141(2024)	40,00(1575)	3,50(137)	1,80(107)	50,90(2004)	6.35(250)	2		
4395-1119	12	6141(2418)	50,00(1969)	3,50(137)	1,80(107)	60,90(2398)		2		
4395-1120	14	7141(2811)	60,00(2362)	3,50(137)	1,80(107)	70,90(2791)		2		
4395-1121	10	5141(2024)	40,00(1575)	3,50(137)	1,80(107)	50,90(2004)	2.36(1093)	2		
4395-1122	14	7141(2811)	60,00(2362)	3,50(137)	1,80(107)	70,90(2791)	157(1062)	2		

OVERALL T.N. PLANNED FOR OBSOLETE

SEE SHEET 1 REC. NO. IEP7015-2752 DRAWN BY BRO2 CHK'D APP. BY KPRASAD DATE 2015/02/09 REV. 1	QUALITY SYMBOLS ∇=0 ∇=0 ∇=0	GENERAL TOLERANCES (UNLESS SPECIFIED) mm INCH 4 PLACES ±.008 ±.008 3 PLACES ±.008 ±.008 2 PLACES ±0.2 ±.008 1 PLACE ±.008 ±.008 0 PLACE ±.008 ±.008		DIMENSION STYLE MM/IN DRAWN BY DATE COMERC 1 8/21/97 CHECKED BY DATE BRO2 2014/02/13 APPROVED BY DATE KPRASAD 2015/02/09		SCALE 1:2	DESIGN UNITS METRIC	THIRD ANGLE PROJECTION
		DRAFT WHERE APPLICABLE MUST REMAIN WITHIN DIMENSIONS		MATERIAL NOS. SEE CHART		DOCUMENT NO. SD-43915-002	SHEET NO. 2 OF 2	
		THIS DRAWING CONTAINS INFORMATION THAT IS PROPRIETARY TO MOLEX INCORPORATED AND SHOULD NOT BE USED WITHOUT WRITTEN PERMISSION						

19 18 17 16 15 14 13 12 11 10 9 8 7 6 5 4 3 2 1