

## **Excellent Integrated System Limited**

Stocking Distributor

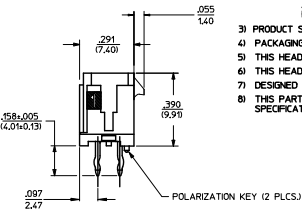
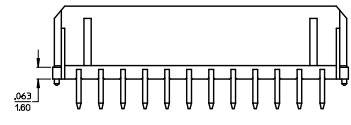
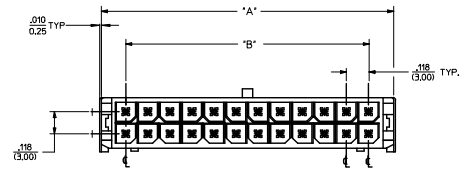
Click to view price, real time Inventory, Delivery & Lifecycle Information:

[Molex Connector Corporation](#)  
[0440671001](#)

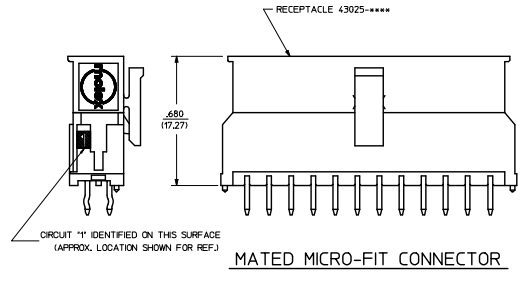
For any questions, you can email us directly:  
[sales@integrated-circuit.com](mailto:sales@integrated-circuit.com)

ASSEMBLY ITEM NUMBER	PART CHARACTERISTICS FOR VERTICAL	
	NUMBER OF POSITION	PLATING OPTION
44067-0201	02	A
44067-0202	02	B
44067-0203	02	C
44067-0401	04	A
44067-0402	04	B
44067-0403	04	C
44067-0601	06	A
44067-0602	06	B
44067-0603	06	C
44067-0801	08	A
44067-0802	08	B
44067-0803	08	C
44067-1001	10	A
44067-1002	10	B
44067-1003	10	C
44067-1201	12	A
44067-1202	12	B
44067-1203	12	C
44067-1401	14	A
44067-1402	14	B
44067-1403	14	C
44067-1601	16	A
44067-1602	16	B
44067-1603	16	C
44067-1801	18	A
44067-1802	18	B
44067-1803	18	C
44067-2001	20	A
44067-2002	20	B
44067-2003	20	C
44067-2201	22	A
44067-2202	22	B
44067-2203	22	C
44067-2401	24	A
44067-2402	24	B
44067-2403	24	C

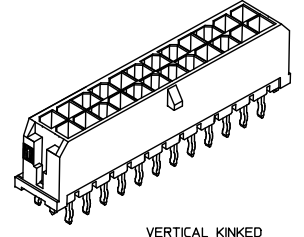
QTY. NO.	DIM. 'A'	DIM. 'B'	DIM. 'C'
2	.262(16.65)	NA	SEE LAYOUT
4	.380(19.65)	.118(3.00)	SEE LAYOUT
6	.498(12.65)	.236(16.00)	.472(12.00)
8	.616(15.65)	.354(19.00)	.590(15.00)
10	.734(18.65)	.472(12.00)	.708(18.00)
12	.852(12.65)	.591(15.00)	.827(12.00)
14	.970(12.65)	.709(18.00)	.945(12.00)
16	1.088(12.65)	.827(12.00)	1.063(12.00)
18	1.206(30.65)	.945(24.00)	1.181(30.00)
20	1.325(33.65)	1.063(27.00)	1.299(33.00)
22	1.443(36.65)	1.181(30.00)	1.417(36.00)
24	1.561(39.65)	1.299(33.00)	1.535(39.00)



- NOTES**
- 1) MATERIAL:  
HOUSING - LIQUID CRYSTAL POLYMER (LCP), GLASS-FILLED UL34V-0, COLOR - BLACK  
TERMINAL - BRASS ALLOY
  - 2) FINISHES:  
\*A\* - .000060(0.00152) MIN. REFLOWED MATTE TIN OVER .000050(0.00127) MIN. NICKEL PLATE. FINISH IS BRIGHT IN APPEARANCE. THICKNESS AS APPLIED PRIOR TO REFLOW.  
\*B\* - .000015(0.00038) MIN. SELECT GOLD IN CONTACT AREA, .000100(0.00254) MIN. SELECT MATTE TIN ON SOLDER TAILS, BOTH OVER .000050(0.00127) MIN. NICKEL PLATE.  
\*C\* - .000030(0.00076) MIN. SELECT GOLD IN CONTACT AREA, .000100(0.00254) MIN. SELECT MATTE TIN ON SOLDER TAILS, BOTH OVER .000050(0.00127) MIN. NICKEL PLATE.
  - 3) PRODUCT SPECIFICATION: PS-43045.
  - 4) PACKAGING SPECIFICATIONS ARE SHOWN ON DRAWING PK-70873-0314.
  - 5) THIS HEADER MATES WITH MICRO-FIT RECEPTACLE 43025-\*\*\*\*.
  - 6) THIS HEADER IS DESIGNED IN METRIC.
  - 7) DESIGNED FOR .140(3.56) MAX. THICK P.C. BOARDS.
  - 8) THIS PART CONFORMS TO CLASS B REQUIREMENTS OF COSMETIC SPECIFICATION PS-45499-002.

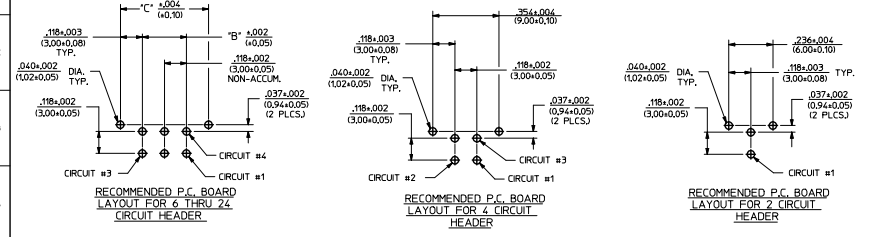


VERTICAL O.T.R. THRU HOLE  
(LONGER P.C. TAIL LENGTH)



VERTICAL KINKED  
THRU HOLE HEADER  
ISO VIEW

MATED MICRO-FIT CONNECTOR



QUALITY SYMBOLS	GENERAL TOLERANCES (UNLESS SPECIFIED)		DIMENSION STYLE		SCALE	DESIGN UNITS	THIRD ANGLE PROJECTION
	mm	INCH	IN/MM	DATE			
∇=0	4 PLACES	±.010	INCH	1997/12/25	4:1	METRIC	MICRO-FIT(3.0) 2-24 CKT. VERTICAL
∇=0	3 PLACES	±.014	INCH	1997/12/25			
∇=0	1 PLACE	±.036	INCH	2016/01/06			
∇=0	0 PLACE	±.036	INCH	2016/01/06			SHEET NO. 1 OF 1 DOCUMENT NO. SD-44067-001
DRAFT WHERE APPLICABLE MUST REMAIN WITHIN DIMENSIONS				MATERIAL NO. SEE CHART DATE THIS DRAWING CONTAINS INFORMATION THAT IS PROPRIETARY TO MOLEX INCORPORATED AND SHOULD NOT BE USED WITHOUT WRITTEN PERMISSION			