

## Excellent Integrated System Limited

Stocking Distributor

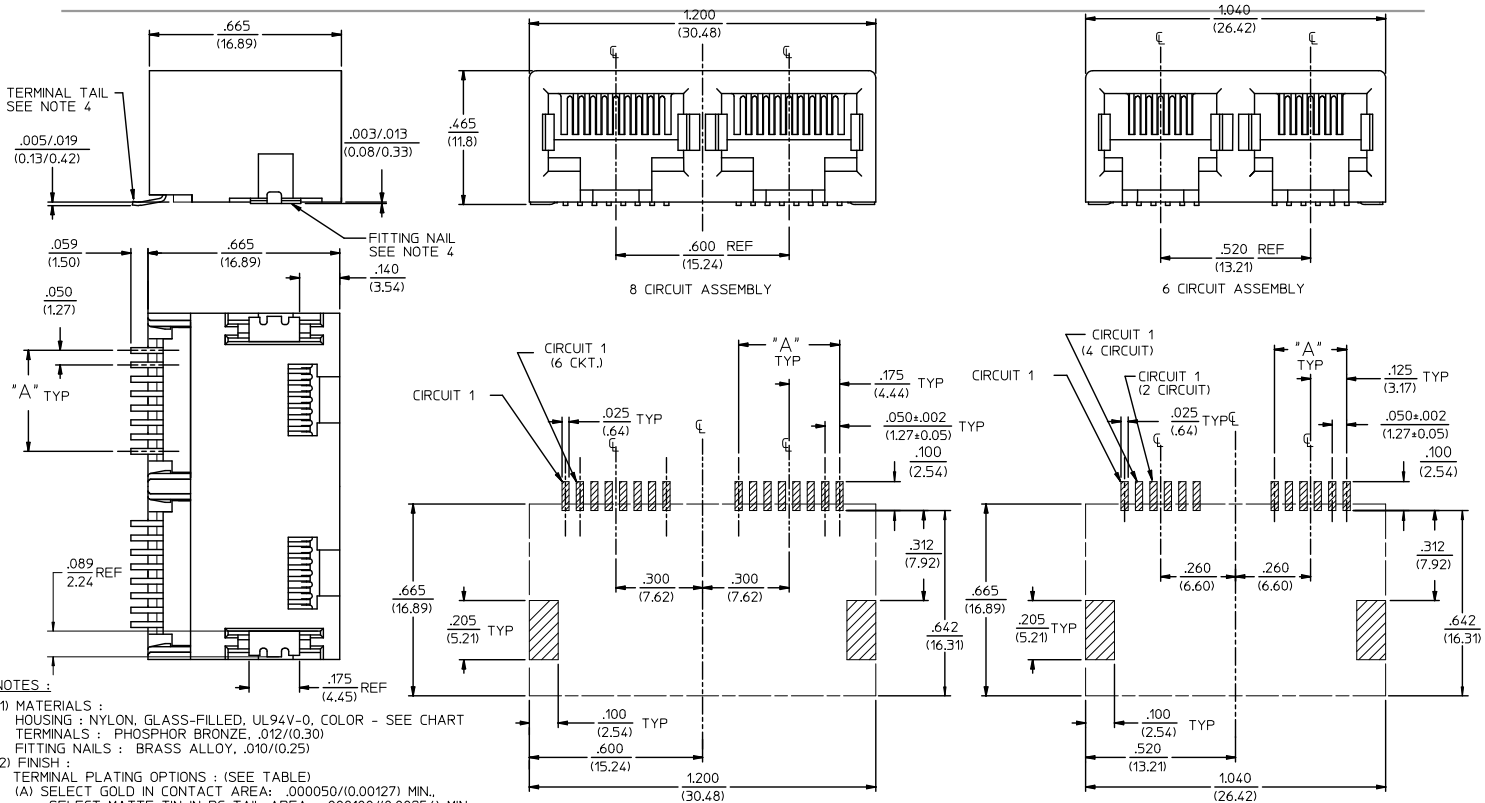
Click to view price, real time Inventory, Delivery & Lifecycle Information:

[Molex Connector Corporation](#)

[0441930009](#)

For any questions, you can email us directly:

[sales@integrated-circuit.com](mailto:sales@integrated-circuit.com)



- NOTES:**
- MATERIALS:**  
HOUSING: NYLON, GLASS-FILLED, UL94V-0, COLOR - SEE CHART  
TERMINALS: PHOSPHOR BRONZE, .012/(0.30)  
FITTING NAILS: BRASS ALLOY, .010/(0.25)
  - FINISH:**  
TERMINAL PLATING OPTIONS: (SEE TABLE)  
(A) SELECT GOLD IN CONTACT AREA: .000050/(0.00127) MIN.  
\*SELECT MATTE TIN IN PC TAIL AREA: .000100/(0.00254) MIN.  
WITH OVERALL NICKEL UNDERPLATE: .000050/(0.00127) MIN.  
(B) SELECT GOLD IN CONTACT AREA: .000030/(0.00076) MIN.  
\*SELECT MATTE TIN IN PC TAIL AREA: .000100/(0.00254) MIN.  
WITH OVERALL NICKEL UNDERPLATE: .000050/(0.00127) MIN.  
(C) SELECT GOLD IN CONTACT AREA: .000015/(0.00038) MIN.  
\*SELECT MATTE TIN IN PC TAIL AREA: .000100/(0.00254) MIN.  
WITH OVERALL NICKEL UNDERPLATE: .000050/(0.00127) MIN.  
FITTING NAILS:  
\*100 MICRONS MATTE TIN OVER 50 MICRONS NICKEL UNDERPLATE  
\*THE PRIMARY SHIPPING CARTON WILL BE LABELED "ELV AND RoHS COMPLIANT". CARTONS WITHOUT THIS LABEL MAY CONTAIN PRODUCT WITH TIN-LEAD IN THE PC TAIL AREA.
  - PRODUCT SPECIFICATION:** PS-43743-001
  - COPLANARITY SPECIFICATIONS:**  
WITH THE MODULAR JACK SITTING ON A LEVEL SURFACE, THE MAXIMUM GAP BETWEEN THE LEVEL SURFACE AND ALL TERMINAL TAILS AND BOTH FITTING NAILS IS .006/(0.15).
  - FOR ASSEMBLIES HAVING VOIDED CIRCUITS, THE TAIL PORTION IS CUT AND REMOVED. THE MATING PORTION OF THE TERMINAL REMAINS INTACT. VOIDED CIRCUITS MUST BE THE SAME FOR BOTH PORTS.
  - CONVECTION SOLDERING TECHNOLOGY SHOULD BE USED WHEN GANGING MODULAR JACKS WITH INBOARD NAILS SIDE-BY-SIDE.
  - THIS PART CONFORMS TO CLASS B REQUIREMENTS OF COSMETIC SPECIFICATION PS-45499-002.

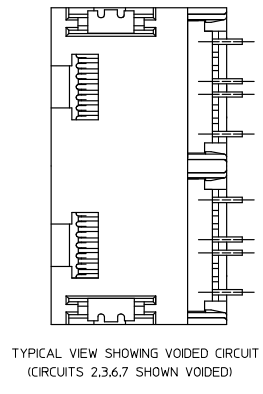
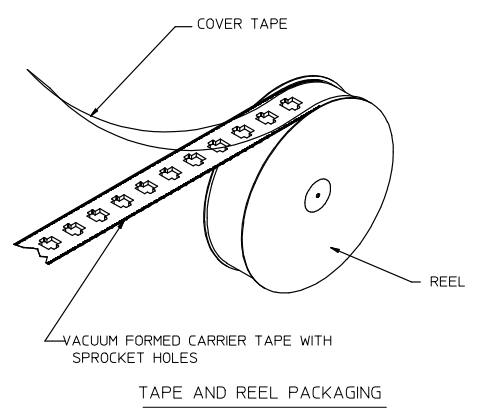
PC BOARD LAYOUT FOR 8 POSITION HOUSING (COMPONENT SIDE OF BOARD)

PC BOARD LAYOUT FOR 6 POSITION HOUSING (COMPONENT SIDE OF BOARD)

<b>REVISED NOTES</b> REC NO: UCP2009-1244 DRAWN: JACUSTE/EK/2008/12/10 CHKD: J.BELL APPR: PSMITH 2008/07/20	<b>QUALITY SYMBOLS</b> ▽=0 ▽=0	<b>GENERAL TOLERANCES (UNLESS SPECIFIED)</b>		<b>DIMENSION STYLE</b> IN/MM		SCALE 1:1	DESIGN UNITS INCH	THIRD ANGLE PROJECTION	
		4 PLACES ± .010 ± .010		DRAWN BY MUELLER		DATE 98/06/11		TITLE 4, 6, & 8 CIRCUIT DUAL PORT SMT MODULAR JACK W/ FLUSH MOUNT NAILS	
		3 PLACES ± .010 ± .010		CHECKED BY ROBERTS		DATE 98/06/16		MOLEX INCORPORATED	
		2 PLACES ± 0.25 ± .015		APPROVED BY EDGLEY		DATE 98/06/17		MOLEX INCORPORATED	
1 PLACE ± 0.38 ± .010		ANGULAR ± 1/2°		MATERIAL NO. SEE SHT 2		DOCUMENT NO. SD-44193-001		SHEET NO. 1 OF 2	
DRAFT WHERE APPLICABLE MUST REMAIN WITHIN DIMENSIONS				THIS DRAWING CONTAINS INFORMATION THAT IS PROPRIETARY TO MOLEX INCORPORATED AND SHOULD NOT BE USED WITHOUT WRITTEN PERMISSION					

ASSEMBLY ITEM NO.	CONNECTOR SIZE	CIRCUIT SIZE	TERMINAL PLATING	TAPE & REEL PACKAGING NO.	VOIDED CIRCUITS	HOUSING COLOR
44193-0001	8	4	A	PK-70873-7004	NA	BLACK
44193-0002	8	6	A	PK-70873-7004		
44193-0003	8	8	A	PK-70873-7004		
44193-0004	6	4	A	PK-70873-7003		
44193-0005	6	6	A	PK-70873-7003		
44193-0006	8	4	B	PK-70873-7004		
44193-0007	8	6	B	PK-70873-7004		
44193-0008	8	8	B	PK-70873-7004		
44193-0009	6	4	B	PK-70873-7003		
44193-0010	6	6	B	PK-70873-7003		
44193-0011	8	4	C	PK-70873-7004		
44193-0012	8	6	C	PK-70873-7004		
44193-0013	8	8	C	PK-70873-7004		
44193-0014	6	4	C	PK-70873-7003		
44193-0015	6	6	C	PK-70873-7003		
44193-0016	6	2	A	PK-70873-7003		
44193-0017	6	2	B	PK-70873-7003		
44193-0018	6	2	C	PK-70873-7003		

HOUSING SIZE	CIRCUIT SIZE	DIM. A
6	6	.250 (6.35)
6	4	.150 (3.81)
6	2	.050 (1.27)
8	8	.350 (8.89)
8	6	.250 (6.35)
8	4	.150 (3.81)



OBSOLETE 441930019 EIC NO: UCP2008-1189 DRAWN: JHELL 2007/11/30 CHK'D: SCHMIDT 2008/02/20 APPROVE: SMITH 2008/02/04 REV DESCRIPTION	QUALITY SYMBOLS	GENERAL TOLERANCES (UNLESS SPECIFIED)	DIMENSION STYLE IN/MM	SCALE 4:1	DESIGN UNITS INCH	THIRD ANGLE PROJECTION	
	▽=0 ▽=0	4 PLACES ± --- ± --- 3 PLACES ± --- ± .010 2 PLACES ± 0.25 ± .015 1 PLACE ± 0.38 ± --- ANGULAR ± 1/2°	DRAWN BY DATE MUELLER 98/06/11 CHECKED BY DATE ROBERTS 98/06/16 APPROVED BY DATE EDGLEY 98/06/17	TITLE 2 PORT SMT. JACK ASSY W/FLUSH MOUNT NAILS			
	DRAFT WHERE APPLICABLE MUST REMAIN WITHIN DIMENSIONS	MATERIAL NO. SEE CHART	DOCUMENT NO. SD-44193-001	MOLEX INCORPORATED			
	SIZE C THIS DRAWING CONTAINS INFORMATION THAT IS PROPRIETARY TO MOLEX INCORPORATED AND SHOULD NOT BE USED WITHOUT WRITTEN PERMISSION		SHEET NO. 2 OF 2				