

Excellent Integrated System Limited

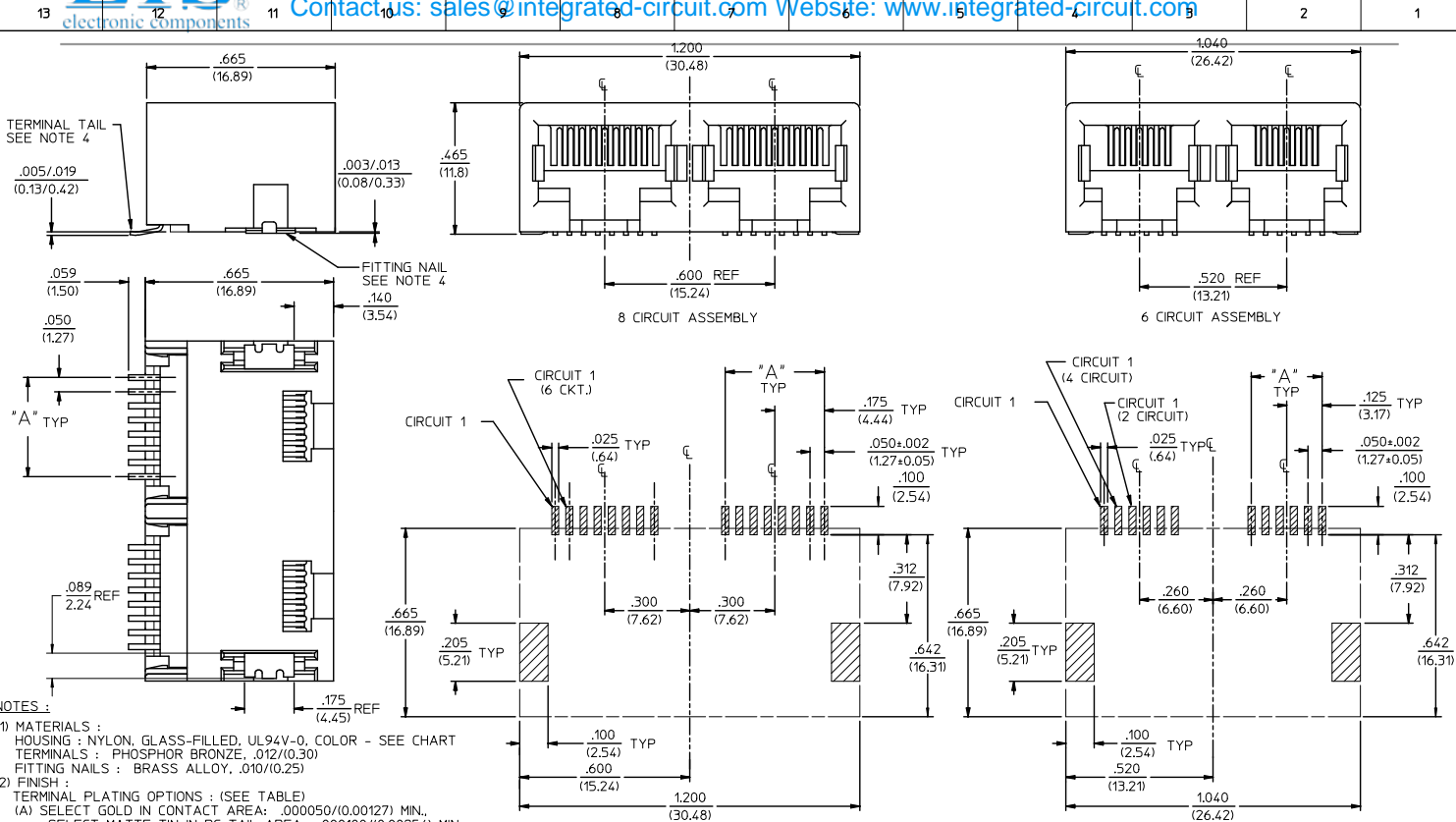
Stocking Distributor

Click to view price, real time Inventory, Delivery & Lifecycle Information:

[Molex Connector Corporation](#)
[0441930011](#)

For any questions, you can email us directly:

sales@integrated-circuit.com



- NOTES:**
- MATERIALS:**
HOUSING: NYLON, GLASS-FILLED, UL94V-0, COLOR - SEE CHART
TERMINALS: PHOSPHOR BRONZE, .012/(0.30)
FITTING NAILS: BRASS ALLOY, .010/(0.25)
 - FINISH:**
TERMINAL PLATING OPTIONS: (SEE TABLE)
(A) SELECT GOLD IN CONTACT AREA: .000050/(0.00127) MIN.
*SELECT MATTE TIN IN PC TAIL AREA: .000100/(0.00254) MIN.
WITH OVERALL NICKEL UNDERPLATE: .000050/(0.00127) MIN.
(B) SELECT GOLD IN CONTACT AREA: .000030/(0.00076) MIN.
*SELECT MATTE TIN IN PC TAIL AREA: .000100/(0.00254) MIN.
WITH OVERALL NICKEL UNDERPLATE: .000050/(0.00127) MIN.
(C) SELECT GOLD IN CONTACT AREA: .000015/(0.00038) MIN.
*SELECT MATTE TIN IN PC TAIL AREA: .000100/(0.00254) MIN.
WITH OVERALL NICKEL UNDERPLATE: .000050/(0.00127) MIN.
FITTING NAILS:
*100 MICRONS MATTE TIN OVER 50 MICRONS NICKEL UNDERPLATE
*THE PRIMARY SHIPPING CARTON WILL BE LABELED "ELV AND RoHS COMPLIANT". CARTONS WITHOUT THIS LABEL MAY CONTAIN PRODUCT WITH TIN-LEAD IN THE PC TAIL AREA.
 - PRODUCT SPECIFICATION:** PS-43743-001
 - COPLANARITY SPECIFICATIONS:**
WITH THE MODULAR JACK SITTING ON A LEVEL SURFACE, THE MAXIMUM GAP BETWEEN THE LEVEL SURFACE AND ALL TERMINAL TAILS AND BOTH FITTING NAILS IS .006/(0.15).
 - FOR ASSEMBLIES HAVING VOIDED CIRCUITS, THE TAIL PORTION IS CUT AND REMOVED. THE MATING PORTION OF THE TERMINAL REMAINS INTACT. VOIDED CIRCUITS MUST BE THE SAME FOR BOTH PORTS.
 - CONVECTION SOLDERING TECHNOLOGY SHOULD BE USED WHEN GANGING MODULAR JACKS WITH INBOARD NAILS SIDE-BY-SIDE.
 - THIS PART CONFORMS TO CLASS B REQUIREMENTS OF COSMETIC SPECIFICATION PS-45499-002.

PC BOARD LAYOUT FOR 8 POSITION HOUSING (COMPONENT SIDE OF BOARD)

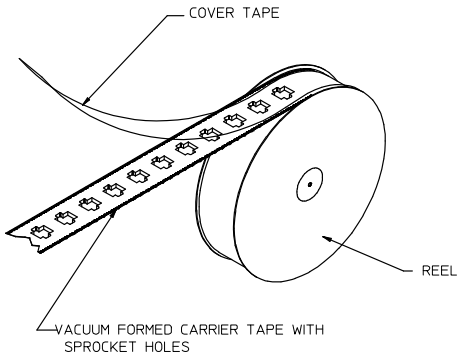
PC BOARD LAYOUT FOR 6 POSITION HOUSING (COMPONENT SIDE OF BOARD)

REVISED NOTES REC NO: UCP2009-1244 DRAWN: JACUSTE/EK/2008/12/10 CHKD: J.BELL APPR: PSMITH 2008/07/20	QUALITY SYMBOLS ▽=0 ▽=0	GENERAL TOLERANCES (UNLESS SPECIFIED)		DIMENSION STYLE IN/MM		SCALE 1:1	DESIGN UNITS INCH	THIRD ANGLE PROJECTION
		4 PLACES ± .010 ± .010		DRAWN BY MUELLER		DATE 98/06/11		TITLE 4, 6, & 8 CIRCUIT DUAL PORT SMT MODULAR JACK W/ FLUSH MOUNT NAILS MOLEX INCORPORATED
		3 PLACES ± .010 ± .010		CHECKED BY ROBERTS		DATE 98/06/16		
		2 PLACES ± 0.25 ± .015		APPROVED BY EDGLEY		DATE 98/06/17		
1 PLACE ± 0.38 ± .010		ANGULAR ± 1/2°		MATERIAL NO. SEE SHT 2		DOCUMENT NO. SD-44193-001		
DRAFT WHERE APPLICABLE MUST REMAIN WITHIN DIMENSIONS				SIZE C		THIS DRAWING CONTAINS INFORMATION THAT IS PROPRIETARY TO MOLEX INCORPORATED AND SHOULD NOT BE USED WITHOUT WRITTEN PERMISSION		

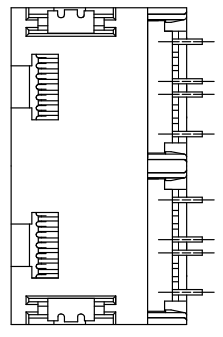
2	G1
1	G2
	SHREV

ASSEMBLY ITEM NO.	CONNECTOR SIZE	CIRCUIT SIZE	TERMINAL PLATING	TAPE & REEL PACKAGING NO.	VOIDED CIRCUITS	HOUSING COLOR	
J	44193-0001	8	4	A	PK-70873-7004	NA	BLACK
	44193-0002	8	6	A	PK-70873-7004		
	44193-0003	8	8	A	PK-70873-7004		
I	44193-0004	6	4	A	PK-70873-7003		
	44193-0005	6	6	A	PK-70873-7003		
	44193-0006	8	4	B	PK-70873-7004		
	44193-0007	8	6	B	PK-70873-7004		
H	44193-0008	8	8	B	PK-70873-7004		
	44193-0009	6	4	B	PK-70873-7003		
	44193-0010	6	6	B	PK-70873-7003		
	44193-0011	8	4	C	PK-70873-7004		
G	44193-0012	8	6	C	PK-70873-7004		
	44193-0013	8	8	C	PK-70873-7004		
	44193-0014	6	4	C	PK-70873-7003		
F	44193-0015	6	6	C	PK-70873-7003		
	44193-0016	6	2	A	PK-70873-7003		
	44193-0017	6	2	B	PK-70873-7003		
E	44193-0018	6	2	C	PK-70873-7003		

HOUSING SIZE	CIRCUIT SIZE	DIM. A
6	6	.250 (6.35)
6	4	.150 (3.81)
6	2	.050 (1.27)
8	8	.350 (8.89)
8	6	.250 (6.35)
8	4	.150 (3.81)



TAPE AND REEL PACKAGING



TYPICAL VIEW SHOWING VOIDED CIRCUIT (CIRCUITS 2,3,6,7 SHOWN VOIDED)

OBSOLETE 441930019 EIC NO: UCP2008-1189 DRAWN: JHELL 2007/11/30 CHK'D: SCHMIDT 2008/02/20 APPROVE: SMITH 2008/02/04 REV DESCRIPTION	QUALITY SYMBOLS	GENERAL TOLERANCES (UNLESS SPECIFIED)	DIMENSION STYLE IN/MM	SCALE 4:1	DESIGN UNITS INCH	THIRD ANGLE PROJECTION
	▽=0 ▽=0	4 PLACES ± --- ± --- 3 PLACES ± --- ± .010 2 PLACES ± 0.25 ± .015 1 PLACE ± 0.38 ± --- ANGULAR ± 1/2°	DRAWN BY: MUELLER DATE: 98/06/11 CHECKED BY: ROBERTS DATE: 98/06/16 APPROVED BY: EDGLEY DATE: 98/06/17	TITLE: 2 PORT SMT. JACK ASSY W/FLUSH MOUNT NAILS MOLEX INCORPORATED		
	DRAFT WHERE APPLICABLE MUST REMAIN WITHIN DIMENSIONS	SEE CHART	MATERIAL NO.	DOCUMENT NO. SD-44193-001	SHEET NO. 2 OF 2	
	THIS DRAWING CONTAINS INFORMATION THAT IS PROPRIETARY TO MOLEX INCORPORATED AND SHOULD NOT BE USED WITHOUT WRITTEN PERMISSION					